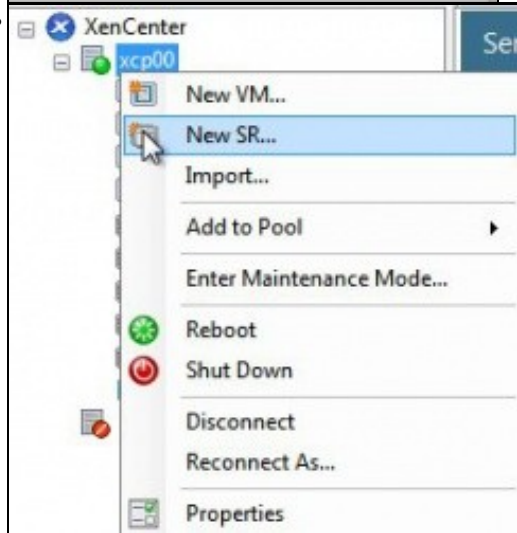
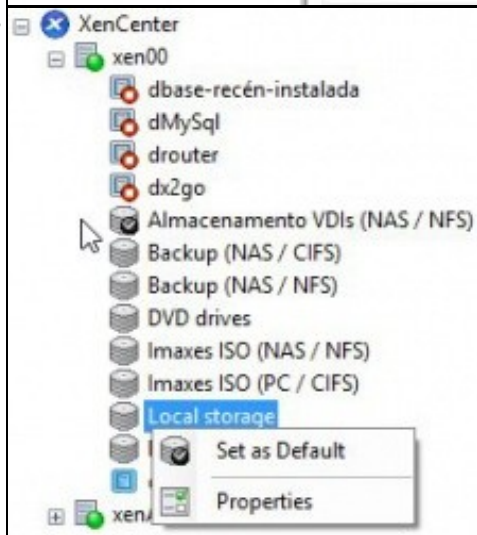
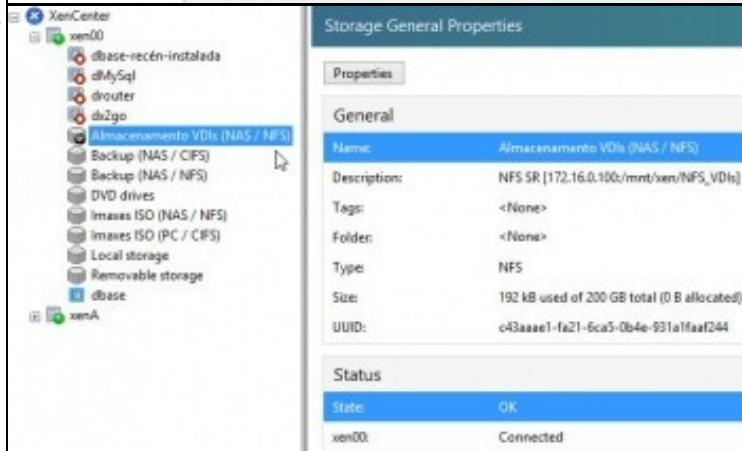
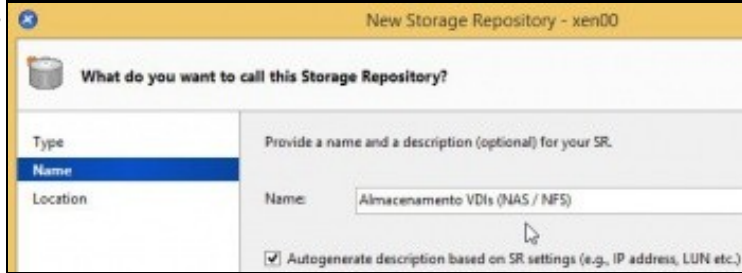
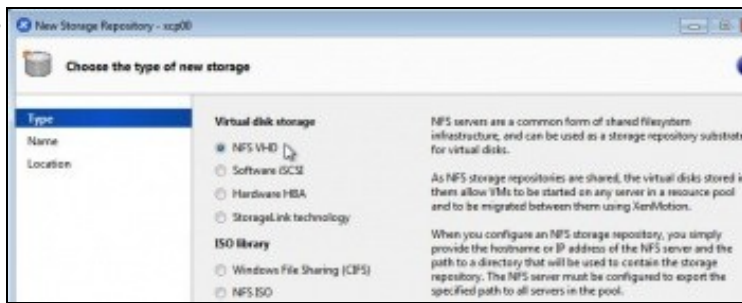
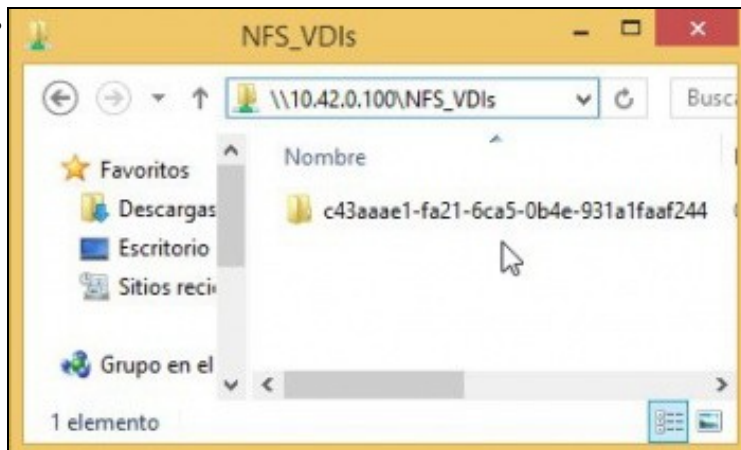


XenServer: NFS VHD. iSCSI. Store XenMotion

• ????????????????





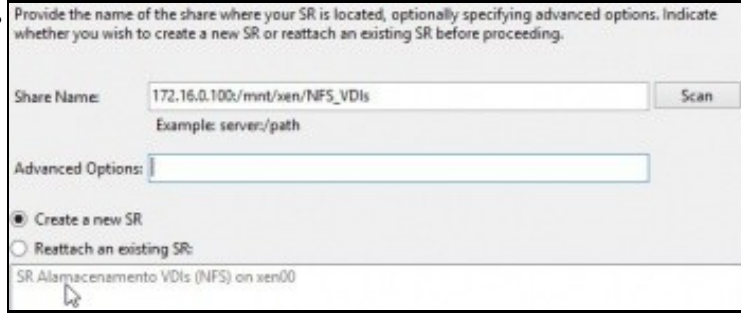
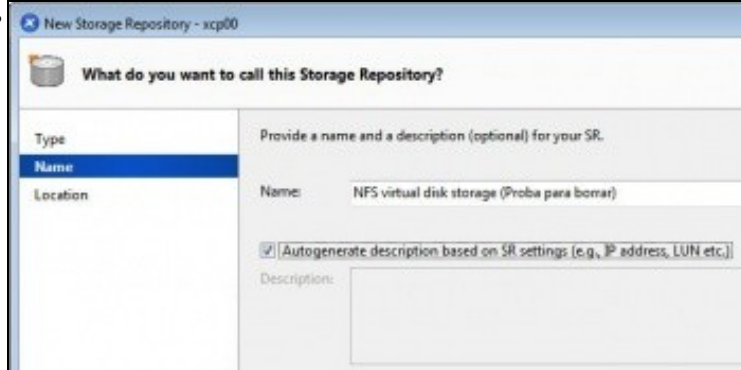


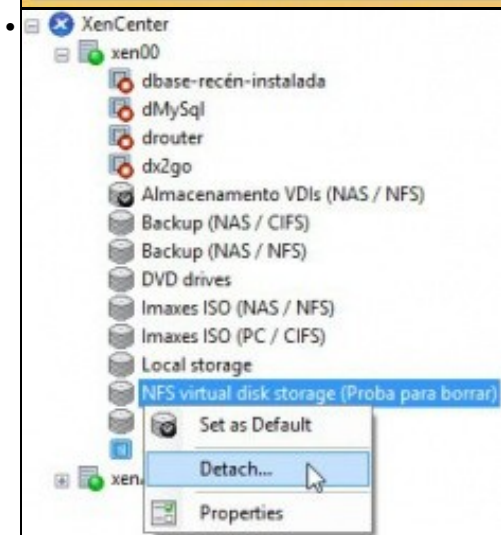
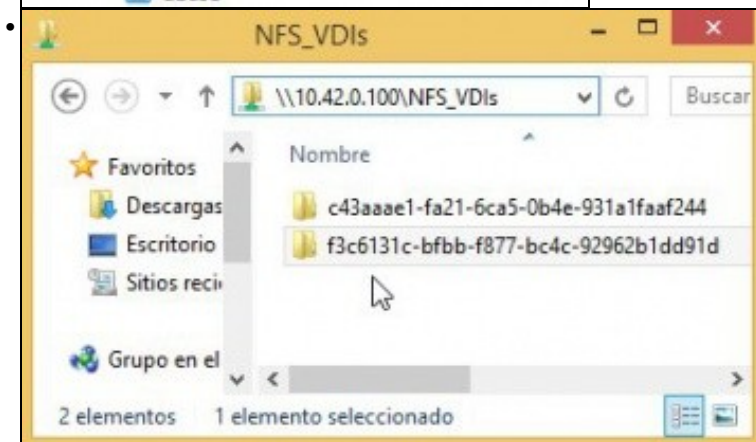
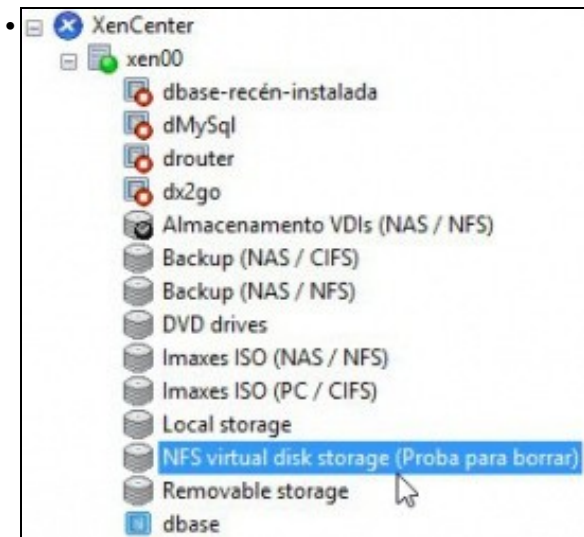
```

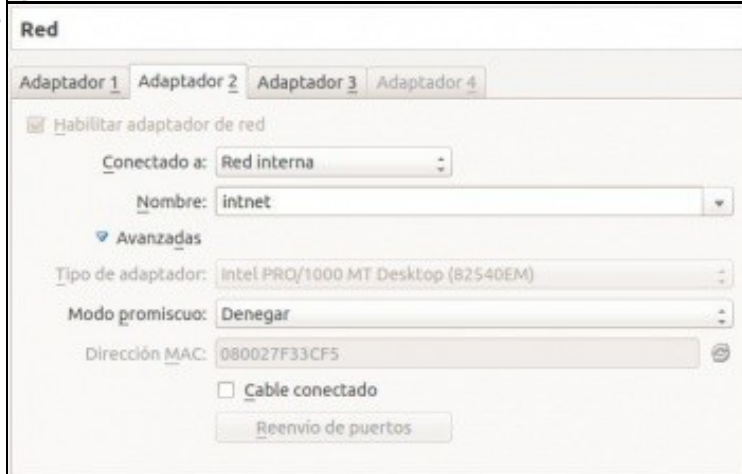
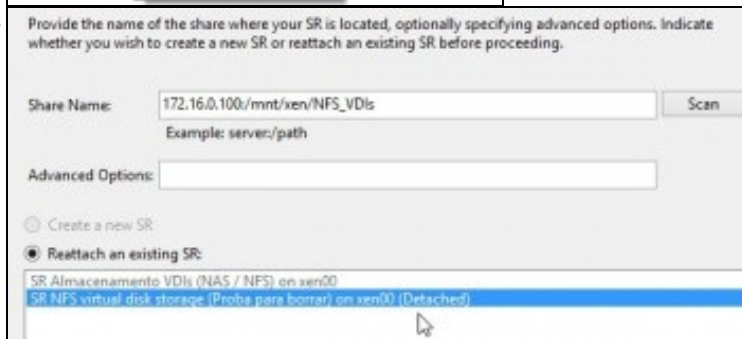
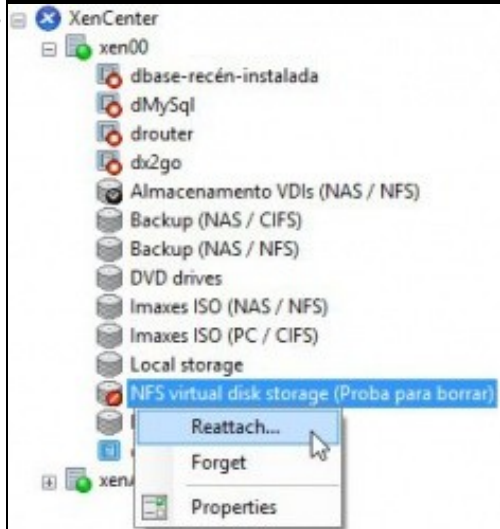
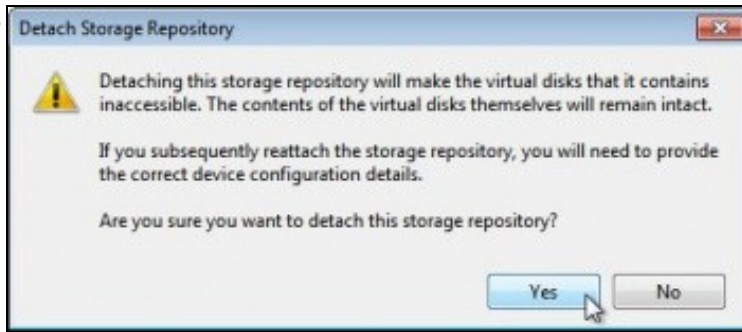
[root@xen00 ~]# xe sr-list
allowed-operations=          PBDs=
allowed-operations:contains= PBDs:contains=
blobs=                       physical-size=
content-type=                physical-utilisation=
current-operations=          shared=
current-operations:contains= sm-config=
database:                    tags=
host=                        tags:contains=
introduced-by=              type=
local-cache-enabled=        uuid=
name-description=           VDIs=
name-label=                 VDIs:contains=
other-config=               virtual-allocation=
params=

[root@xen00 ~]# xe sr-list name-label
Almacenamiento VDIs \ (NAS \ ^ NFS \) Inaxes \ ISO \ (PC \ ^ CIFS \)
Backup \ (NAS \ ^ CIFS \) Local \ storage
Backup \ (NAS \ ^ NFS \) Renewable \ storage
DUD \ drives XenServer \ Tools
Inaxes \ ISO \ (NAS \ ^ NFS \)
[root@xen00 ~]# xe sr-list name-label=

```







```
Local Command Shell
c
c
c
c
c
INIT: Sending processes the TERM signal <Enter> Fingerprints <F5> Refresh
Shutting down Virtual Machines: ::::::::::::::::::::::::::::::::::::::::::::::::::::
  Requesting evacuation of host

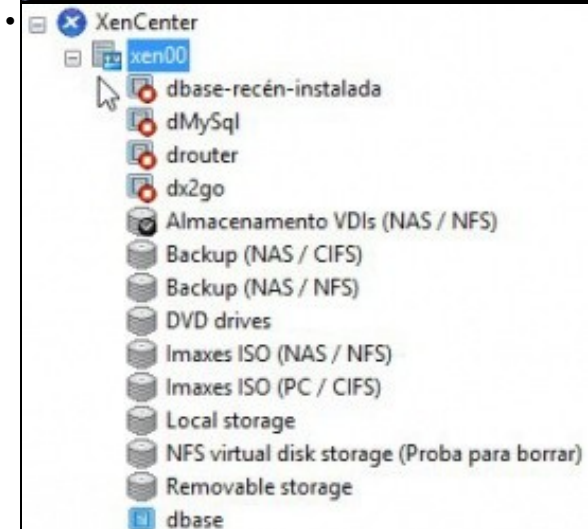
Terminating remaining Virtual Machines:      [ OK ]
Stopping atd:                               [ OK ]
Stopping perfmon:                           [ OK ]
Stopping sshd:                              [ OK ]
Stopping crowd:                             [ OK ]
Unmounting NFS filesystems: umount.nfs: 172.16.0.100:/mnt/xen/NFS_SR/bdd8edbc-528b-7086-47ba-d812f2581724: not found / mounted or server not reachable
umount.nfs: 172.16.0.100:/mnt/xen/NFS_SR/bdd8edbc-528b-7086-47ba-d812f2581724: not found / mounted or server not reachable
umount.nfs: 172.16.0.100:/mnt/xen/NFS_SR/b9cc9821-687c-c896-7c57-7e6baa159d6c: not found / mounted or server not reachable
umount.nfs: 172.16.0.100:/mnt/xen/NFS_SR/b9cc9821-687c-c896-7c57-7e6baa159d6c: not found / mounted or server not reachable
umount.nfs: 172.16.0.100:/mnt/xen/ISOs: not found / mounted or server not reachable
umount.nfs: 172.16.0.100:/mnt/xen/ISOs: not found / mounted or server not reachable
[FAILED]
Cannot stat /var/run/sr-mount/bdd8edbc-528b-7086-47ba-d812f2581724: Input/output error
```

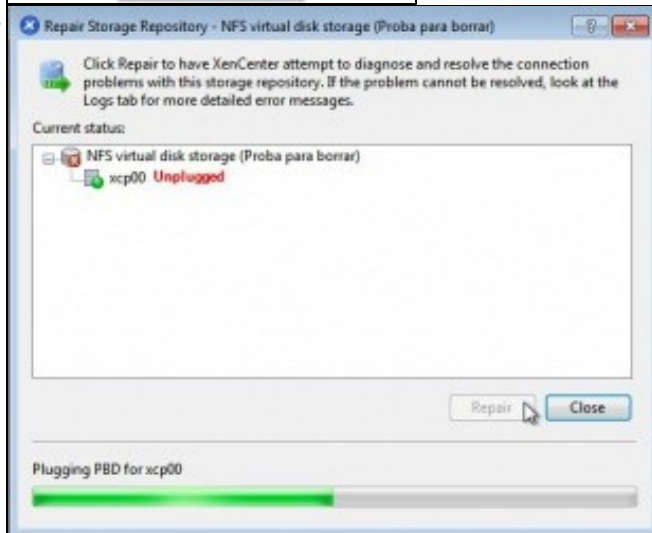
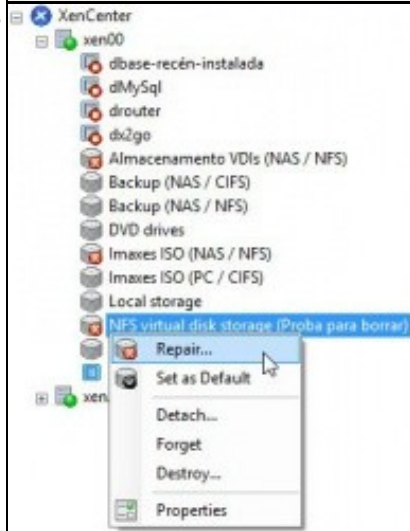
```
Shutting down Virtual Machines: ::::::::::::::::::::::::::::::::::::::::::::::::::::
  Requesting evacuation of host

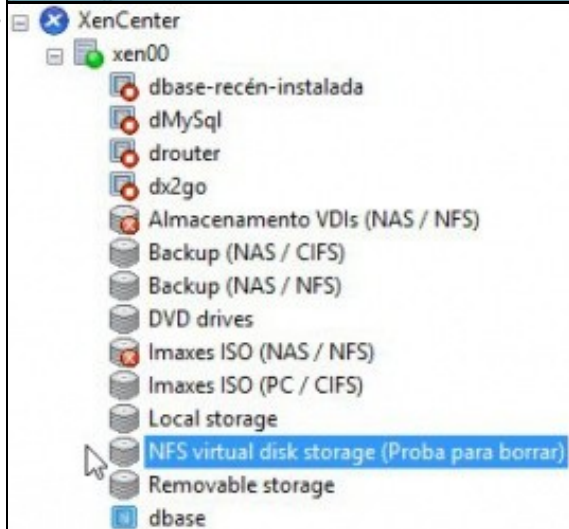
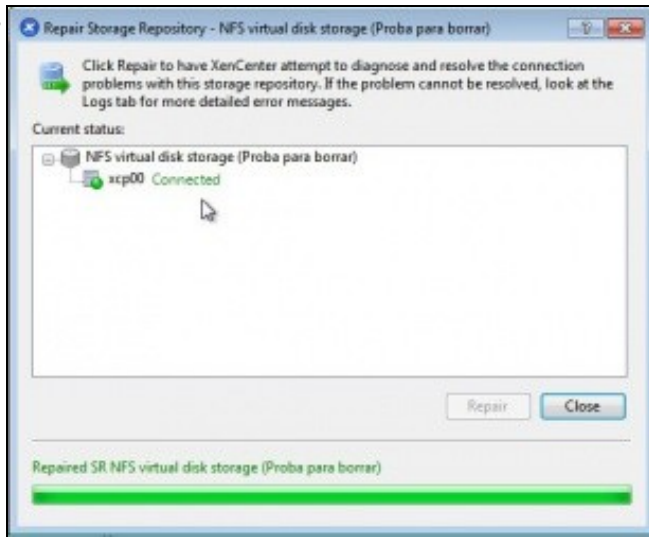
Terminating remaining Virtual Machines:      [ OK ]
Stopping atd:                               [ OK ]
Stopping perfmon:                           [ OK ]
Stopping sshd:                              [ OK ]
Stopping crowd:                             [ OK ]
Unmounting NFS filesystems: umount.nfs: 172.16.0.100:/mnt/xen/NFS_SR/bdd8edbc-528b-7086-47ba-d812f2581724: not found / mounted or server not reachable
umount.nfs: 172.16.0.100:/mnt/xen/NFS_SR/bdd8edbc-528b-7086-47ba-d812f2581724: not found / mounted or server not reachable
umount.nfs: 172.16.0.100:/mnt/xen/NFS_SR/b9cc9821-687c-c896-7c57-7e6baa159d6c: not found / mounted or server not reachable
umount.nfs: 172.16.0.100:/mnt/xen/NFS_SR/b9cc9821-687c-c896-7c57-7e6baa159d6c: not found / mounted or server not reachable
umount.nfs: 172.16.0.100:/mnt/xen/ISOs: not found / mounted or server not reachable
umount.nfs: 172.16.0.100:/mnt/xen/ISOs: not found / mounted or server not reachable
[FAILED]
Cannot stat /var/run/sr-mount/bdd8edbc-528b-7086-47ba-d812f2581724: Input/output error
Cannot stat /var/run/sr-mount/bdd8edbc-528b-7086-47ba-d812f2581724: Input/output error
Cannot stat /var/run/sr-mount/bdd8edbc-528b-7086-47ba-d812f2581724: Input/output error
Cannot stat /var/run/sr-mount/b9cc9821-687c-c896-7c57-7e6baa159d6c: Input/output error
```

```
Terminating remaining Virtual Machines:      [ OK ]
Stopping atd:                               [ OK ]
Stopping perfmon:                           [ OK ]
Stopping sshd:                              [ OK ]
Stopping crowd:                             [ OK ]
Unmounting NFS filesystems: umount.nfs: 172.16.0.100:/mnt/xen/NFS_SR/bdd8edbc-528b-7086-47ba-d812f2581724: not found / mounted or server not reachable
umount.nfs: 172.16.0.100:/mnt/xen/NFS_SR/bdd8edbc-528b-7086-47ba-d812f2581724: not found / mounted or server not reachable
umount.nfs: 172.16.0.100:/mnt/xen/NFS_SR/b9cc9821-687c-c896-7c57-7e6baa159d6c: not found / mounted or server not reachable
umount.nfs: 172.16.0.100:/mnt/xen/NFS_SR/b9cc9821-687c-c896-7c57-7e6baa159d6c: not found / mounted or server not reachable
umount.nfs: 172.16.0.100:/mnt/xen/ISOs: not found / mounted or server not reachable
umount.nfs: 172.16.0.100:/mnt/xen/ISOs: not found / mounted or server not reachable
[FAILED]
Cannot stat /var/run/sr-mount/bdd8edbc-528b-7086-47ba-d812f2581724: Input/output error
Cannot stat /var/run/sr-mount/bdd8edbc-528b-7086-47ba-d812f2581724: Input/output error
Cannot stat /var/run/sr-mount/bdd8edbc-528b-7086-47ba-d812f2581724: Input/output error
Cannot stat /var/run/sr-mount/b9cc9821-687c-c896-7c57-7e6baa159d6c: Input/output error
Cannot stat /var/run/sr-mount/b9cc9821-687c-c896-7c57-7e6baa159d6c: Input/output error
```

```
• -bfbb-f877-bc4c-92962b1dd91d: not found / mounted or server not reachable
umount.nfs: 172.16.8.188:/mnt/xen/NFS_UDIs/f3c6131c-bfbb-f877-bc4c-92962b1dd91d:
not found / mounted or server not reachable
umount.nfs: 172.16.8.188:/mnt/xen/NFS_UDIs/c43aaae1-fa21-6ca5-8b4e-931a1faaf244:
not found / mounted or server not reachable
umount.nfs: 172.16.8.188:/mnt/xen/NFS_UDIs/c43aaae1-fa21-6ca5-8b4e-931a1faaf244:
not found / mounted or server not reachable
umount.nfs: 172.16.8.188:/mnt/xen/ISOs: not found / mounted or server not reach
ble
umount.nfs: 172.16.8.188:/mnt/xen/ISOs: not found / mounted or server not reach
ble
[FAILED]
Cannot stat /var/run/sr-mount/f3c6131c-bfbb-f877-bc4c-92962b1dd91d: Input/output
error
Cannot stat /var/run/sr-mount/f3c6131c-bfbb-f877-bc4c-92962b1dd91d: Input/output
error
Cannot stat /var/run/sr-mount/f3c6131c-bfbb-f877-bc4c-92962b1dd91d: Input/output
error
Cannot stat /var/run/sr-mount/c43aaae1-fa21-6ca5-8b4e-931a1faaf244: Input/output
error
Cannot stat /var/run/sr-mount/c43aaae1-fa21-6ca5-8b4e-931a1faaf244: Input/output
error
Cannot stat /var/run/sr-mount/c43aaae1-fa21-6ca5-8b4e-931a1faaf244: Input/output
error
Cannot stat /var/run/sr-mount/a348675d-6d6b-84fc-fadd-82c5a48f7a83: Input/output
error
Cannot stat /var/run/sr-mount/a348675d-6d6b-84fc-fadd-82c5a48f7a83: Input/output
error
```







```
[root@xen00 ~]# xc sr-list name-label=Almacenamiento VDIs \ (NAS / NFS)
uid ( RD) : c439ae1-fa21-6ca5-9b4e-931a1faaf244
name-label ( RW): Almacenamiento VDIs (NAS / NFS)
name-description ( RW): NFS SR [172.16.0.100:/mnt/xen/NFS_VDIs]
host ( RD): xen00
type ( RD): nfs
content-type ( RD):
```



```

[root@xcp00 ~]# xe sr-list
uid ( RO)                : b9cc9821-687c-c896-7c57-7e6baa159d6c
name-label ( RW)         : NFS virtual disk storage (Proba para borrar)
name-description ( RW)   : NFS SR [172.16.0.100:/mnt/xen/NFS_SR]
host ( RO)               : xcp00
type ( RO)              : nfs
content-type ( RO):

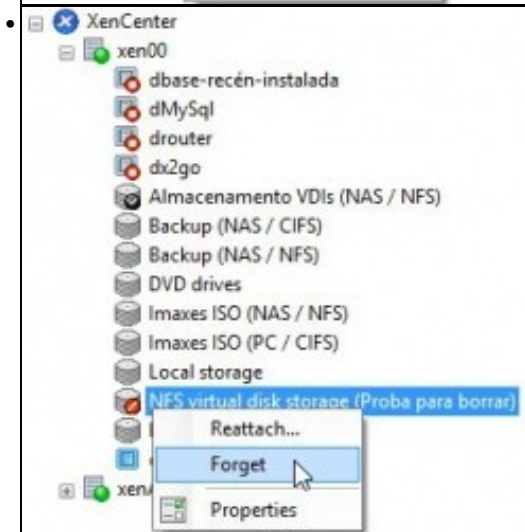
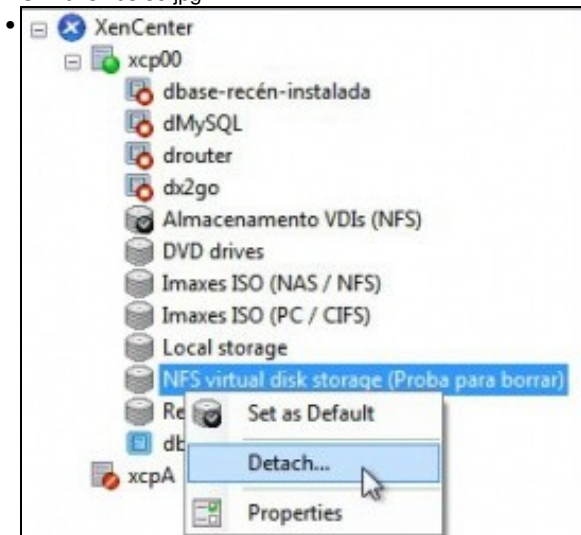
[root@xen00 ~]# mount | grep NFS
172.16.0.100:/mnt/xen/NFS_VDIs/c43aaae1-fa21-6ca5-0b4e-931a1faaf244 on /var/run/xr-mount/c43aaae1-fa21-6ca5-0b4e-931a1faaf244 type nfs (rw,soft,timeo=133,retrasm=2147483647,tcp,actimeo=0,addr=172.16.0.100)
172.16.0.100:/mnt/xen/NFS_VDIs/f3c6131c-bfbb-f877-bc4c-92962b1d491d on /var/run/xr-mount/f3c6131c-bfbb-f877-bc4c-92962b1d491d type nfs (rw,soft,timeo=133,retrasm=2147483647,tcp,actimeo=0,addr=172.16.0.100)
[root@xen00 ~]#

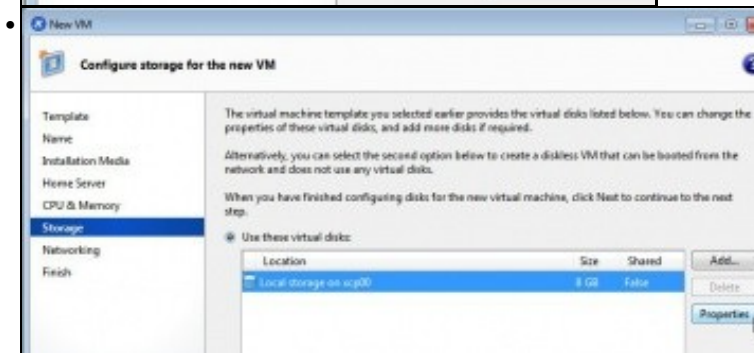
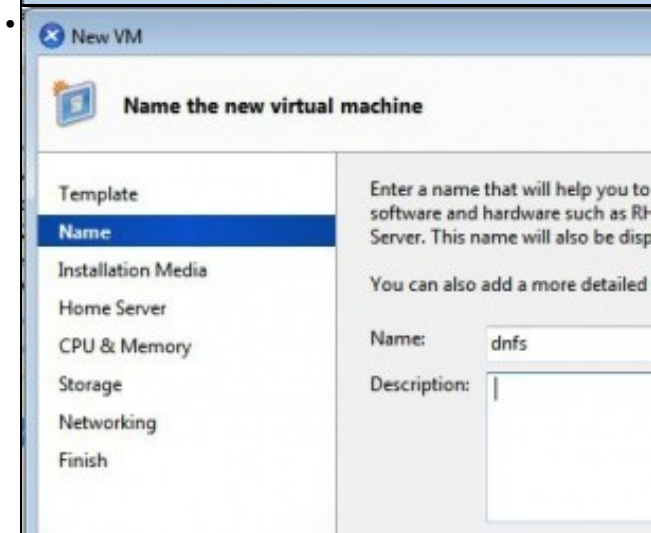
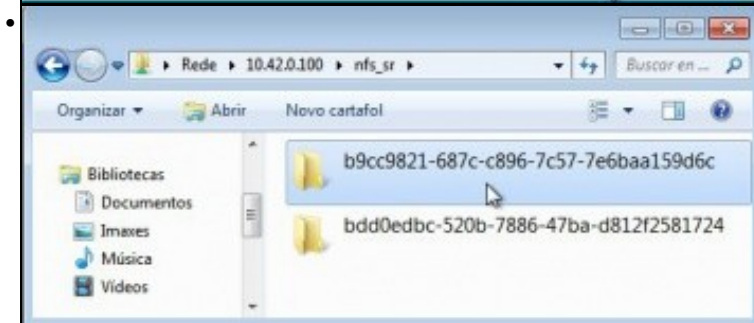
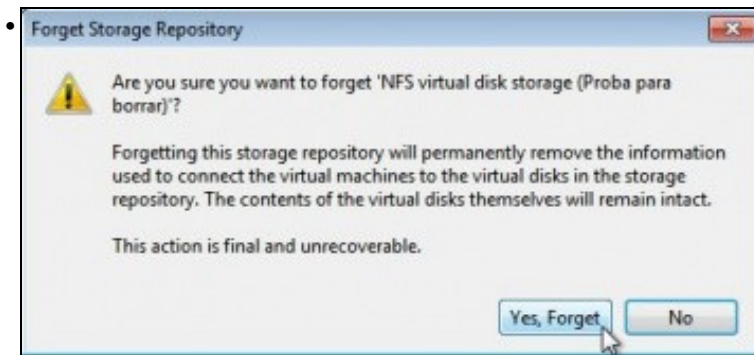
[root@xen00 ~]# xe sr-param-list uuid=c43aaae1-fa21-6ca5-0b4e-931a1faaf244
uid ( RO)                : c43aaae1-fa21-6ca5-0b4e-931a1faaf244
name-label ( RW)         : Almacenamiento VDIs (NAS / NFS)
name-description ( RW)   : NFS SR [172.16.0.100:/mnt/xen/NFS_VDIs]
host ( RO)              : xen00
allowed-operations (SR0) : forget; VDI.create; VDI.snapshot; PBD.create; PBD.destroy; plug; update; destroy; VDI.destroy; scan; VDI.clone; VDI.resize; unplug
current-operations (SR0) :
VDIs (SR0):
PBDs (SR0): [f22a695-9e53-7898-2697-2d830be17272]
virtual-allocation ( RO) : 0
physical-utilisation ( RO) : 196608
physical-size ( RO)       : 214748364000
type ( RO)              : nfs
content-type ( RO):
shared ( RW)            : true
introduced-by ( RO)     : <not in database>
other-config (MRW)      : dirty:
sn-config (MR0):
blobs ( RO):

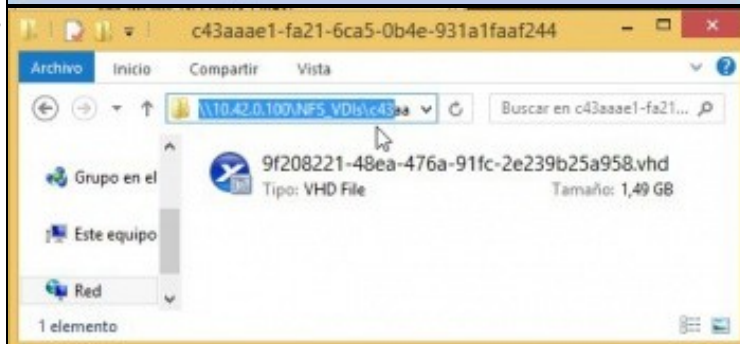
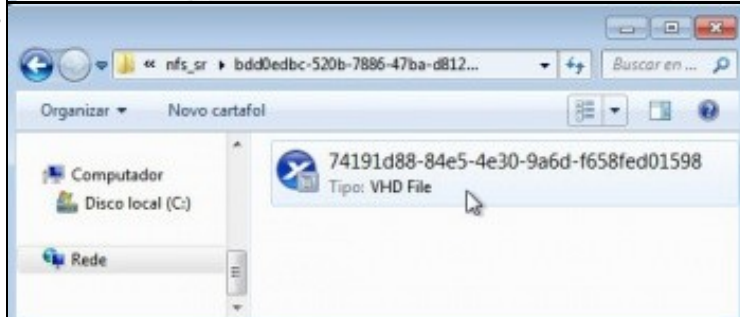
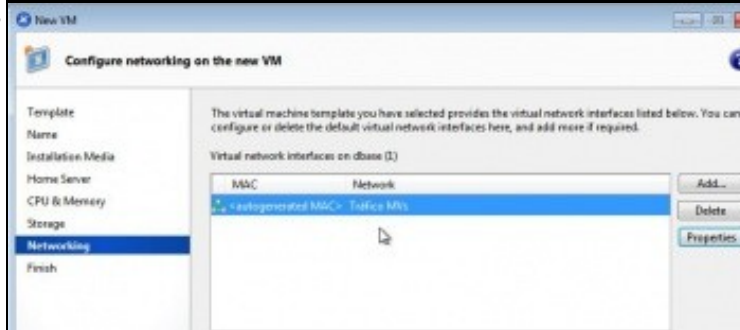
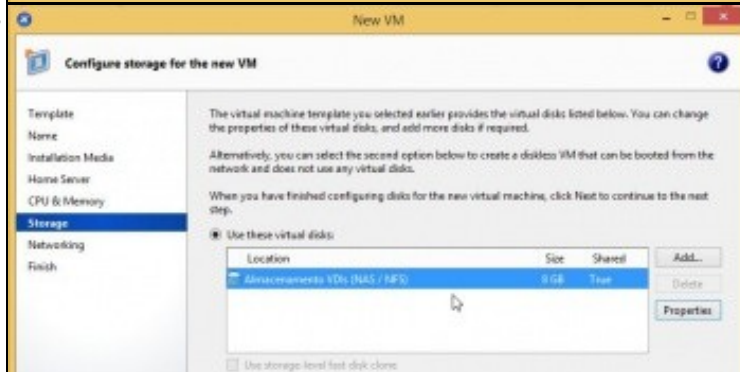
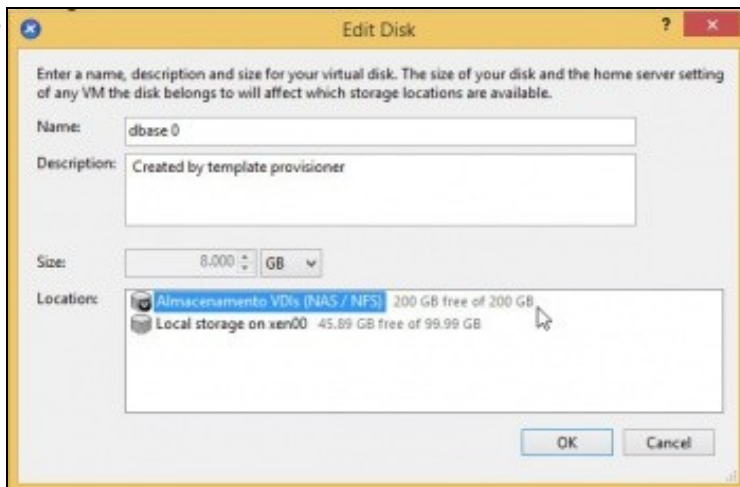
[root@xen00 ~]# xe sr-list uuid=c43aaae1-fa21-6ca5-0b4e-931a1faaf244 params:none -label,PBDs
name-label ( RW)         : Almacenamiento VDIs (NAS / NFS)
PBDs (SR0): [f22a695-9e53-7898-2697-2d830be17272]

```

• Sv 2013 vds 35.jpg







dnfs on 'xen00' Logged in as: Local root account

General | Memory | Storage | Networking | Console | Performance | Snapshots | Logs

Virtual Disks

DVD Drive 1: <empty> Eject

Position	Name	Description	SR	Size	Read Only
0	dbase 0	Created by template provisioner	Almacenamiento VDI (NAS / NFS)	8 GB	No

View: Server View Logged in as: Local

Search...

Virtual Network Interfaces

Networks

Device	MAC	Limit	Network	IP Address
eth0	00:00:00:00:00:00	100MB	Bridge: br0	192.168.1.1
eth1	00:00:00:00:00:00	100MB	Bridge: br0	192.168.1.2

Views: Server View Logged in as: Local

Search...

Virtual Disks

DVD Drive 1: <empty>

```
root@router: # ping 0.0.0.0
```

Search...

Virtual Disks

DVD Drive 1: <empty>

```
root@router: # ping 0.0.0.0
PING 0.0.0.0 (0.0.0.0): 56(84) bytes of data:
64 bytes from 0.0.0.0: icmp_req=1 ttl=47 time=95.8 ms
64 bytes from 0.0.0.0: icmp_req=2 ttl=47 time=82.4 ms
64 bytes from 0.0.0.0: icmp_req=3 ttl=47 time=104.9 ms
```

View: Server View Logged in as: Local

Search...

Local storage on xcp00

General | Storage | Logs

Virtual Disks

Name	Description	Size	Virtual M
dbase 0	Created by template provisioner	8 GB	20130521
dbase 0	Created by template provisioner	8 GB	dx2go
dmystd HD 50	Created by template provisioner	50 GB	despois d
dbase 1	Created by template provisioner	8 GB	router
dmystd 0	Created by template provisioner	8 GB	despois c
dbase 0	Created by template provisioner	8 GB	dbase-rec
dmystd 0	Created by template provisioner	8 GB	dbMySQL

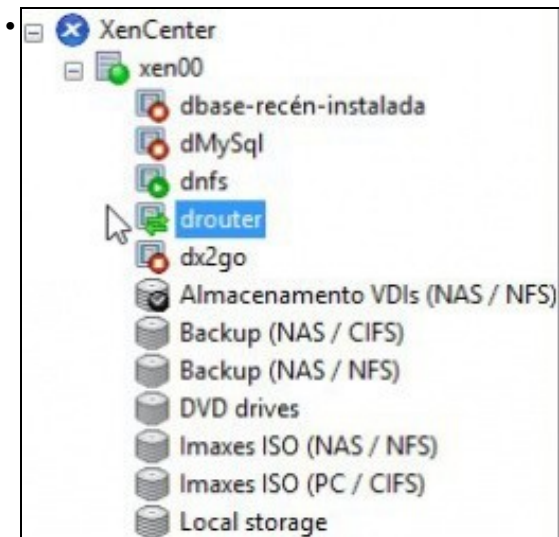
Move Virtual Disk

Select the storage repository that you would like to move the virtual disk to:

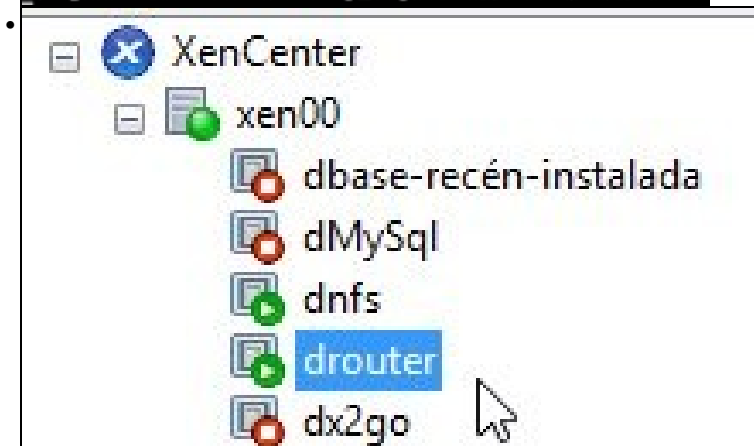
Select a storage repository to create the disk on

- Almacenamiento VDI (NAS / NFS) 200 GB free of 200 GB
- Local storage on xen00 Current location

Move Cancel



```
64 bytes from 8.8.8.8: icmp_req=193 ttl=47 time=79.1 ns
64 bytes from 8.8.8.8: icmp_req=194 ttl=47 time=77.4 ns
64 bytes from 8.8.8.8: icmp_req=195 ttl=47 time=78.8 ns
64 bytes from 8.8.8.8: icmp_req=196 ttl=47 time=88.4 ns
64 bytes from 8.8.8.8: icmp_req=197 ttl=47 time=88.0 ns
64 bytes from 8.8.8.8: icmp_req=198 ttl=47 time=84.7 ns
64 bytes from 8.8.8.8: icmp_req=199 ttl=47 time=80.5 ns
64 bytes from 8.8.8.8: icmp_req=200 ttl=47 time=75.5 ns
64 bytes from 8.8.8.8: icmp_req=201 ttl=47 time=78.2 ns
64 bytes from 8.8.8.8: icmp_req=202 ttl=47 time=92.6 ns
64 bytes from 8.8.8.8: icmp_req=203 ttl=47 time=89.5 ns
64 bytes from 8.8.8.8: icmp_req=204 ttl=47 time=76.0 ns
64 bytes from 8.8.8.8: icmp_req=205 ttl=47 time=84.5 ns
64 bytes from 8.8.8.8: icmp_req=206 ttl=47 time=89.4 ns
64 bytes from 8.8.8.8: icmp_req=207 ttl=47 time=90.0 ns
64 bytes from 8.8.8.8: icmp_req=208 ttl=47 time=81.2 ns
64 bytes from 8.8.8.8: icmp_req=209 ttl=47 time=79.5 ns
64 bytes from 8.8.8.8: icmp_req=210 ttl=47 time=75.5 ns
64 bytes from 8.8.8.8: icmp_req=211 ttl=47 time=79.3 ns
64 bytes from 8.8.8.8: icmp_req=212 ttl=47 time=76.3 ns
64 bytes from 8.8.8.8: icmp_req=213 ttl=47 time=88.2 ns
```



```

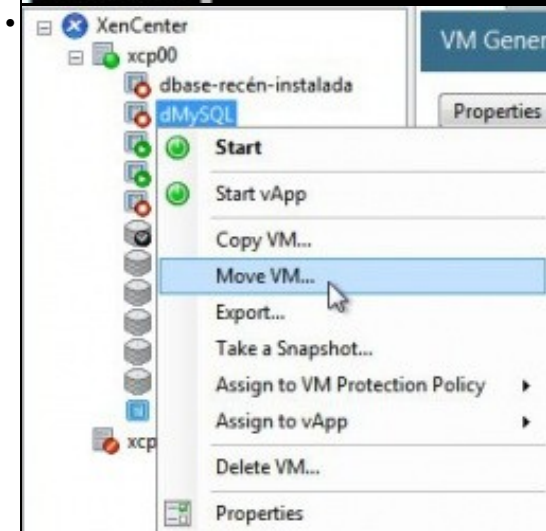
drouter on 'xcp00'
General Memory Storage Networking Console Performance Snapshots Logs
DVD Drive 1: <empty> Eject
64 bytes from 8.8.8.8: icmp_req=730 ttl=47 time=96.8 ms
64 bytes from 8.8.8.8: icmp_req=731 ttl=47 time=75.9 ms
64 bytes from 8.8.8.8: icmp_req=732 ttl=47 time=82.7 ms
64 bytes from 8.8.8.8: icmp_req=733 ttl=47 time=78.5 ms
64 bytes from 8.8.8.8: icmp_req=734 ttl=47 time=83.1 ms
64 bytes from 8.8.8.8: icmp_req=735 ttl=47 time=77.1 ms
64 bytes from 8.8.8.8: icmp_req=736 ttl=47 time=82.9 ms
64 bytes from 8.8.8.8: icmp_req=737 ttl=47 time=89.1 ms
64 bytes from 8.8.8.8: icmp_req=738 ttl=47 time=85.9 ms
64 bytes from 8.8.8.8: icmp_req=739 ttl=47 time=92.8 ms
64 bytes from 8.8.8.8: icmp_req=740 ttl=47 time=92.7 ms
64 bytes from 8.8.8.8: icmp_req=741 ttl=47 time=85.1 ms
64 bytes from 8.8.8.8: icmp_req=742 ttl=47 time=78.6 ms
64 bytes from 8.8.8.8: icmp_req=743 ttl=47 time=77.0 ms
64 bytes from 8.8.8.8: icmp_req=744 ttl=47 time=78.1 ms
64 bytes from 8.8.8.8: icmp_req=745 ttl=47 time=84.4 ms
64 bytes from 8.8.8.8: icmp_req=746 ttl=47 time=81.2 ms
^C
--- 8.8.8.8 ping statistics ---
746 packets transmitted, 746 received, 0% packet loss, time 753021ms
rtt min/avg/max/mdev = 74.042/83.298/196.418/10.160 ms
root@drouter:~#

```

```

64 bytes from 8.8.8.8: icmp_req=745 ttl=47 time=84.4 ns
64 bytes from 8.8.8.8: icmp_req=746 ttl=47 time=81.2 ns
^C
--- 8.8.8.8 ping statistics ---
746 packets transmitted, 746 received, 0% packet loss, time 753021ms
rtt min/avg/max/mdev = 74.042/83.298/196.418/10.160 ns
root@drouter:~#

```



drouter on 'xen00'

General Memory Storage Networking Console Performance Snapshots Logs

Virtual Disks

DVD Drive 1: <empty>

Position	Name	Description	SR	Size
0	dbase 0	Created by template provisioner	Almacenamiento VDis (NAS / NFS)	8 GB

Views: Server View

Almacenamiento VDis (NAS / NFS)

Search...

General Storage Logs

Virtual Disks

Disks

Name	Description	Size	Virtual Machine
dbase 0	Created by tem...	8 GB	drouter
dbase 0	Created by tem...	8 GB	dnfs

scp00 Logged in as: Local root account

Search | General | Memory | Storage | Networking | NICs | Console | Performance | Users | Logs

Storage Repositories

Storage

Name	Description	Type	Shared	Usage	Size	Virtual allocation
DVD drives on scp00	Physical DVD drives on scp00	udev	No	100% (324 MB used)	1024 MB	1024 MB
Images ISO (PC / CIFS)	CIFS ISO Library [\\10.42.0.33]...	ISO	Yes	26% (26.7 GB used)	99.9 GB	99.9 GB
Images ISO (NAS / NFS)	NFS ISO Library [172.16.0.100]...	ISO	Yes	3% (706.9 MB used)	20 GB	20 GB
Removable storage on x...	Physical removable storage o...	udev	No	0% (0 B used)	0 B	0 B
Almacenamiento NFS...	NFS SR [172.16.0.100]/mnt/ve...	NFS	Yes	0% (2 GB used)	200 GB	16 GB
Local storage on scp00	Local storage on scp00	LVM	No	45% (45.3 GB used)	100 GB	34.3 GB

c43aaae1-fa21-6ca5-0b4e-931a1faaf244

Archivo Inicio Compartir Vista

« NFS_... » c43aae... Buscar en c43aae1-fa21...

- 3a1b3429-ebf8-4b57-8e32-053004f1f623.vhd
Tipo: VHD File Tamaño: 1,49 GB
- 9f208221-48ea-476a-91fc-2e239b25a958.vhd
Tipo: VHD File Tamaño: 1,49 GB
- 79e90a0c-6ce5-440c-bd2a-c78f6026493a.vhd
Tipo: VHD File Tamaño: 22,0 MB
- filelog.txt
Tamaño: 492 bytes

4 elementos 1 elemento seleccionado 1,49 GB

```
2014-03-01 22:38:50.363819 log: /var/run/sr-mount/c43aaae1-fa21-6ca5-0b4e-931a1faaf244 /var/run/sr-mount/c43aaae1-fa21-6ca5-0b4e-931a1faaf244/79e90a0c-6ce5-440c-bd2a-c78f6026493a.vhd vdi_clone c43aaae1-fa21-6ca5-0b4e-931a1faaf244 79e90a0c-6ce5-440c-bd2a-c78f6026493a 569470b1-bb7b-45cf-b9ba-040fc8650d51
```

```
2014-03-01 22:38:50.592871 end: /var/run/sr-mount/c43aaae1-fa21-6ca5-0b4e-931a1faaf244 /var/run/sr-mount/c43aaae1-fa21-6ca5-0b4e-931a1faaf244/79e90a0c-6ce5-440c-bd2a-c78f6026493a.vhd done
```

SCSI x

Configuración Global del Destino

Nombre Base: ip:10.13-04.ga.cw.ibm.atg

Descubrir Método de autenticación: kerberos

Descubrir Grupo Autorizador: *

Tiempo de espera: 30

Intervalo NFS/N: 20

Máximo número sesiones: 16

Máximo número conexiones: 8

Bytes Máximos de R2T: 255

Máximo R2T Pendientes: 64

Longitud de la primera transmisión: 268,144

Longitud máxima de transmisión: 2,097,152

Longitud Máxima de recepción de datos: 262,144

Tiempo por defecto de espera: 2

Tiempo de retención por defecto: 60

habilitar LLC:

Dirección IP de la controladora:

Editar Portal

Comentario:

IP del portal

Dirección IPv4:

Puerto:

Borrar:

Dirección IPv4:

Puerto:

Borrar:

Dirección IPv4:

Puerto:

Borrar:

Add extra IP del portal

iSCSI ✕

Configuración Global del Destino Portales **Iniciadores** Acceso autorizado

ID de Grupo	Iniciadores	Red Autorizada	Comentario
2	ALL	172.16.0.0/24	Equipos da rede SAN

iSCSI ✕

Configuración Global del Destino **Portales** Iniciadores Acceso autorizado

ID del Portal del Grupo	Escuchar	Comentario
1	172.16.0.100:3260	

Edit

Nombre del destino:

Alias del destino:

Serial:

Marcadores destino:

ID del Portal del Grupo:

ID del grupo iniciador:

Metodo de Autenticación:

Número de Autenticación de Grupo:

iSCSI x

Configuración Global del Destino Portales Iniciadores Acceso autorizado **Destinos** Extender Destinos

Add Destino

Nombre del destino	Alias del destino	Serial	Marcadores destino	ID del Portal del Grupo	ID del grupo iniciador	Método de Autenticación	ID del Grupo de Autenticación
iscsi-vdIs	Almacename para VDIs	0800278d83ee00	nw	1	2 (Equipos da rede SAN)	CHAP	1

Edit

Nombre del medio:

Tipo de medio:

Dispositivo:

Comentario:

OK Cancelar Borrar

iSCSI x

Configuración Global del Destino Portales Iniciadores Acceso autorizado Destinos **Extender**

Add Medio (Extent)

Nombre del medio	Tipo de medio	Ruta al medio	Comentario
ISCSI_VDIs	ZVOL	/dev/zvol/xen/iSCSI_VDIs	

iSCSI x

Configuración Global del Destino Portales Iniciadores Acceso autorizado Destinos Extender **Destinos asociados**

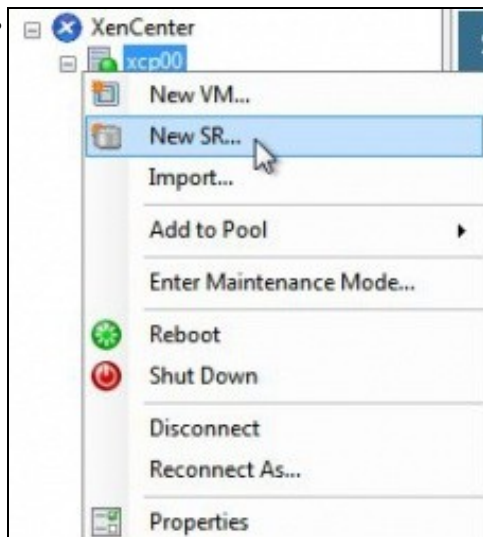
Add Destino / Medio

Destino	Medio (Extent)
iscsi-vdIs	ISCSI_VDIs

iSCSI x Servicios x

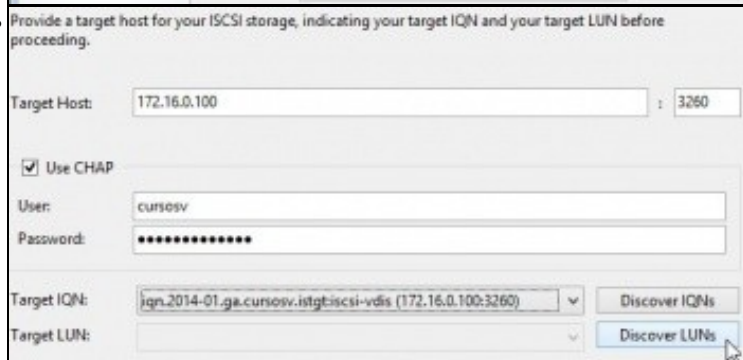
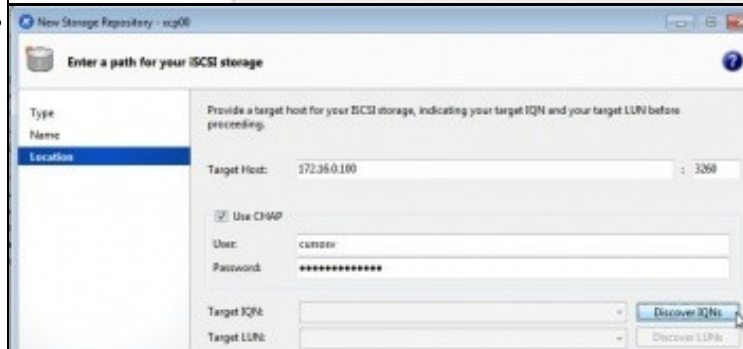
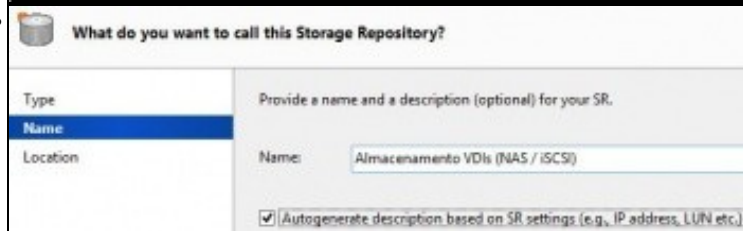
Nucleo (Core) Plugins

- AD OFF
- AFP OFF
- CIFS ON
- DNS Dinamica OFF
- FTP OFF
- ISCSI ON



```

[root@xcp00 ~]# ll /etc/iscsi/
total 32
drwxr-xr-x 2 root root 4096 Nov 26 17:57 /etc/iscsi
-rw-r--r-- 1 root root 50 Nov 26 17:53 initiatorname.iscsi
lrwxrwxrwx 1 root root 19 Apr 29 18:41 iscsid.conf -> iscsid-default.conf
-rw-r--r-- 1 root root 8293 Nov 22 2012 iscsid-default.conf
-rw-r--r-- 1 root root 8282 Nov 22 2012 iscsid-mpath.conf
[root@xcp00 ~]#
  
```



- Provide a target host for your iSCSI storage, indicating your target IQN and your target LUN before proceeding.

Target Host: 172.16.0.100 : 3260

Use CHAP

User: cursosv

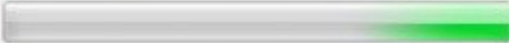
Password: ●●●●●●●●

Target IQN: iqn.2014-01.ga.cursosv:stgt:iscsi-vdis (172.16.0.100:3260) Discover IQNs

Target LUN: LUN 0: 0800278d83ee000: 200 GB (FreeBSD) Discover LUNs

XenCenter

Scanning for LVM over iSCSI SRs on 172.16.0.100

 Cancel

Location

 Creating a new virtual disk on this LUN will destroy any data present. You must ensure that no other system is using the LUN, including any XenServers, or the virtual disk may become corrupted while in use.

Do you wish to format the disk?

Yes No

XenCenter

Creating SR

 Cancel

XenCenter

- xen00
 - dbase-recén-instalada
 - dMySQL
 - dnfs
 - drouter
 - dx2go
 - Almacenamiento VDIs (NAS / iSCSI)
 - Almacenamiento VDIs (NAS / NFS)
 - Backup (NAS / CIFS)
 - Backup (NAS / NFS)
 - DVD drives
 - Imaxes ISO (NAS / NFS)
 - Imaxes ISO (PC / CIFS)
 - Local storage
 - Removable storage
 - dbase

Almacenamiento VDIs (NAS / iSCSI) Logged in as: Local root account

General Storage Logs

Storage General Properties

Properties Expand all Collapse all

General

Name Almacenamiento VDIs (NAS / iSCSI)

Description iSCSI SR [172.16.0.100 (ipn2014-01.ga.cursor.virt@kcsi-vmc) LUN 0: 080278d81ee000: 200 GB (FreeBSD)]

Tags <None>

Folders <None>

Type LVM over iSCSI

Size 4 MB used of 200 GB total (0 B allocated)

SCSI ID: 33300000e948e10

UUID: 8372877c-c26f-1e95-40e9-425054ced835

Status

State OK

xen0: Connected

Multipathing

xen0: Not active

xen00 Logged in as: Local root account

Search General Memory Storage Networking NICs Console Performance Users Logs

Storage Repositories

Storage

Name	Description	Type	Shared	Usage	Size	Virtual al
Almacenamiento VDIs (NAS / iSCSI)	iSCSI SR [172.16.0.100 (ipn2014-01.ga.cursor.virt@kcsi-vmc) LUN 0: 080278d81ee000: 200 GB (FreeBSD)]	LVM ..	Yes	0% (4 MB used)	200 GB	0 B
Almacenamiento VDIs (NAS / NFS)	NFS SR [172.16.0.100/mnt/xen00: 200 GB (FreeBSD)]	NFS	Yes	0% (1.4 GB used)	200 GB	16 GB
Backup (NAS / CIFS)	CIFS ISO Library [\\10.42.0.10\share: 100 GB (FreeBSD)]	ISO	Yes	10% (10.3 GB used)	100 GB	100 GB
Backup (NAS / NFS)	NFS ISO Library [10.42.0.100:/mnt/iso: 100 GB (FreeBSD)]	ISO	Yes	10% (10.3 GB used)	100 GB	100 GB
DVD drives on xen00	Physical DVD drives on xen00	udf	No	100% (1024 MB used)	1024 MB	1024 MB
Imaxes ISO (NAS / NFS)	NFS ISO Library [172.16.0.100/mnt/iso: 50 GB (FreeBSD)]	ISO	Yes	1% (778.7 MB used)	50 GB	50 GB
Imaxes ISO (PC / CIFS)	CIFS ISO Library [\\10.42.0.10\share: 646 GB (FreeBSD)]	ISO	Yes	15% (98.2 GB used)	646 GB	646 GB
Local storage on xen00	Local storage on xen00	LVM	No	46% (46.1 GB used)	100 GB	34.3 GB
Removable storage on xen00	Physical removable storage on xen00	udf	No	0% (0 B used)	0 B	0 B

XenCenter

xen00

- dbase-recén-instalada
- dMySQL
- dnfs
- drouter
- dx2go
- Almacenamiento VDIs (NAS / iSCSI)
- Almacenamiento VDIs (NAS / NFS)
- Backup (NAS / CIFS)
- Backup (NAS / NFS)
- DVD drives on xen00
- Imaxes ISO (NAS / NFS)
- Imaxes ISO (PC / CIFS)

Context menu for Almacenamiento VDIs (NAS / iSCSI):

- Set as Default
- Detach...
- Properties

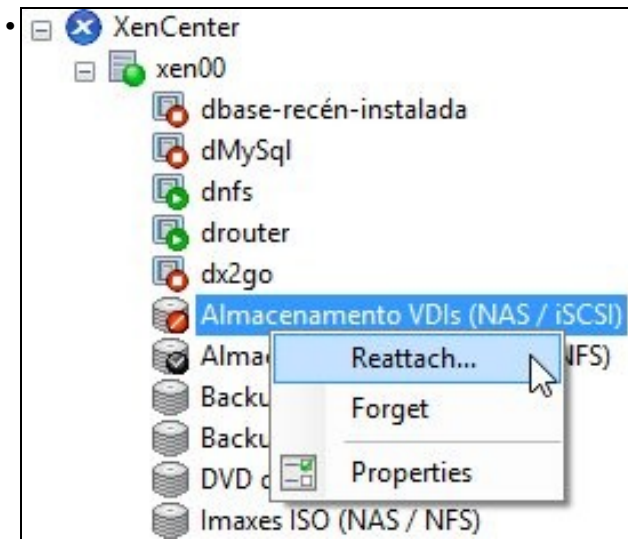
Detach Storage Repository

Warning: Detaching this storage repository will make the virtual disks that it contains inaccessible. The contents of the virtual disks themselves will remain intact.

If you subsequently reattach the storage repository, you will need to provide the correct device configuration details.

Are you sure you want to detach this storage repository?

Yes No



- Provide a target host for your iSCSI storage, indicating your target IQN and your target LUN before proceeding.

Target Host: 172.16.0.100 ; 3260

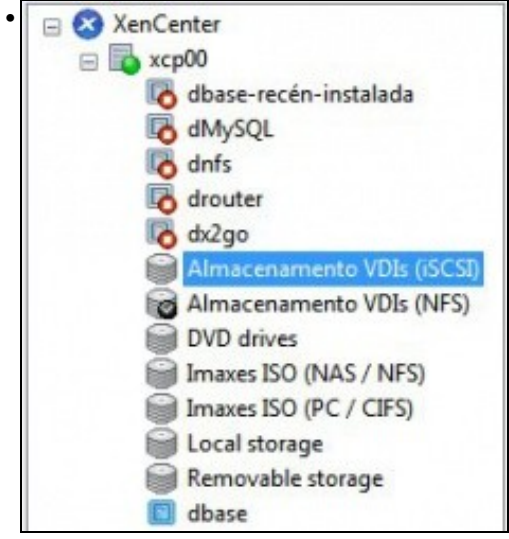
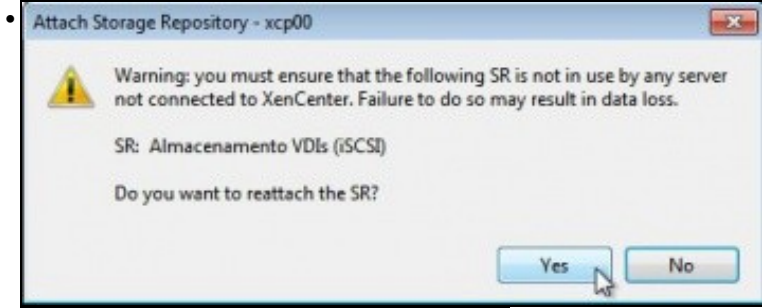
Use CHAP

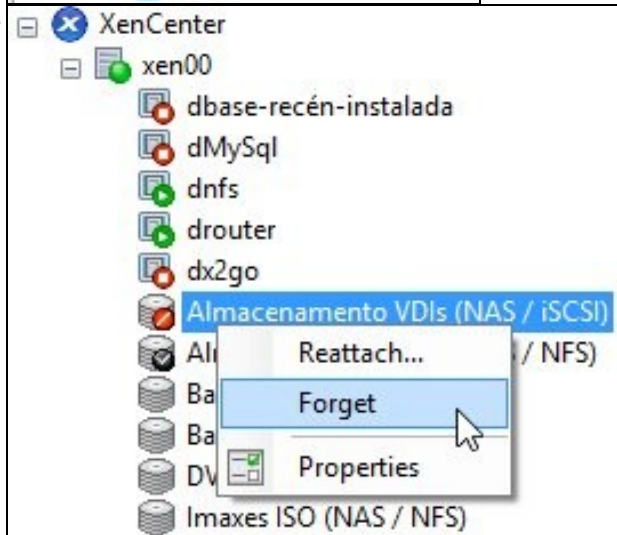
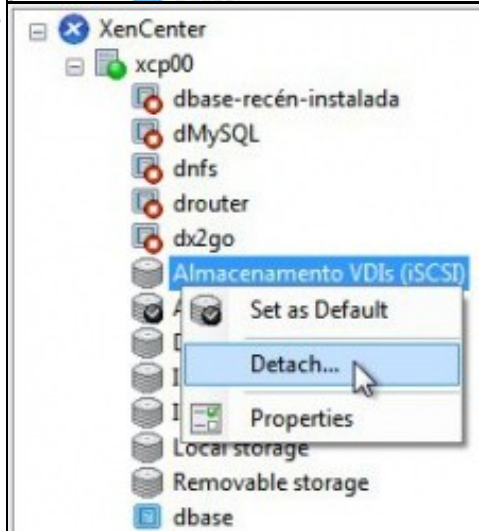
User: cursosv

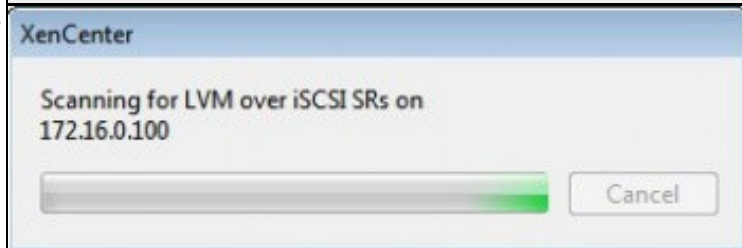
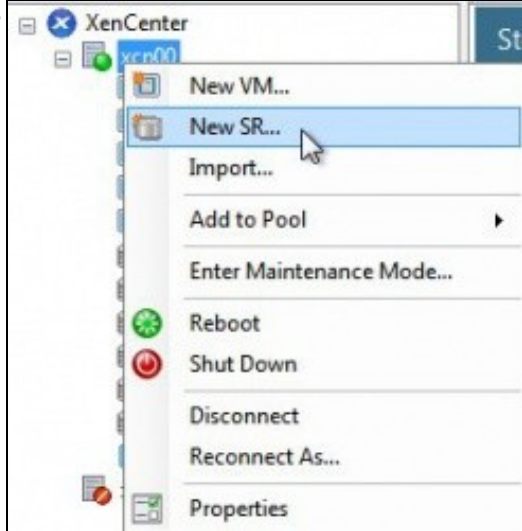
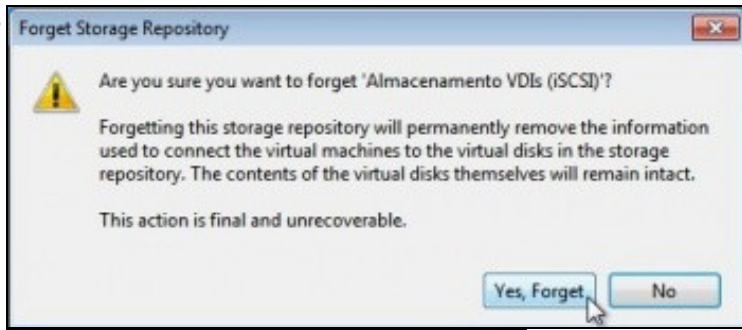
Password:

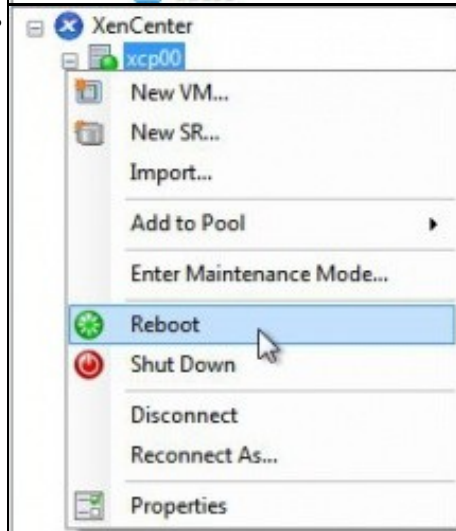
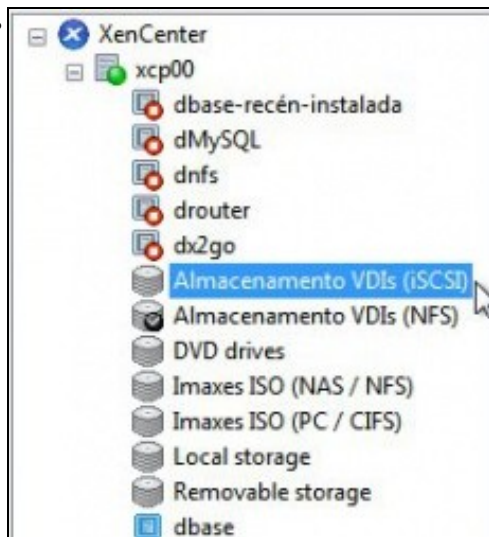
Target IQN: iqn.2013-04.ga.cursosv.istgtiscsi-nfs (172.16.0.100:3260) Discover IQNs

Target LUN: LUN 0: 080027f92b29000: 200 GB (FreeBSD) Discover LUNs









```

root@xcp00 ~# ll /etc/iscsi/
total 40
drwxr-xr-x 2 root root 4096 May 26 15:01 .
-rw-r--r-- 1 root root 68 May 26 15:01 initiatorname.iscsi
lrwxr-xr-x 1 root root 19 Apr 29 18:41 iscsid.conf -> iscsid-default.conf
-rw-r--r-- 1 root root 8203 Nov 22 2012 iscsid-default.conf
-rw-r--r-- 1 root root 8202 Nov 22 2012 iscsid-npath.conf
-rw-r--r-- 1 root root 0 May 26 14:41 lock
drwxr-xr-x 3 root root 4096 May 26 15:01 nodes
drwxr-xr-x 3 root root 4096 May 26 15:01 send_targets
root@xcp00 ~#

```

```

root@xcp00 ~# ll /etc/iscsi/nodes/
total 4
drwxr-xr-x 3 root root 4096 May 26 15:01 iqn.2014-01.ga.cursosu.istgt:iscsi-odis
root@xcp00 ~#

```

```

root@xcp00 ~# cat /etc/iscsi/nodes/iqn.2014-01.ga.cursosu.istgt:iscsi-odis/172
.16.0.100N,3260N,1/default
# BEGIN RECORD 2,0-871
node.name = iqn.2014-01.ga.cursosu.istgt:iscsi-odis
node.tpgt = 1
node.startup = manual
iface.iscsi_iface_name = default
iface.transport_name = tcp
node.discovery_address = 172.16.0.100
node.discovery_port = 3260
node.discovery_type = send_targets
node.session.initial_cmds_max = 0
node.session.initial_login_retry_max = 4
node.session.xmit_thread_priority = -20
node.session.cmds_max = 128
node.session.queue_depth = 32
node.session.auth.authmethod = CHAP
node.session.auth.username = cursosu
node.session.auth.password = abc123456789.

```

```

XenServer 6.2                               09:48:02                               xen00
----- Configuration -----

Current Storage Repositories

Almacenamiento UDIs (NAS / NFS) (default)  Almacenamiento UDIs (NAS / iSCSI)
Almacenamiento UDIs (NAS / iSCSI)         Size      199GB total, 199GB free
Backup (NAS / CIFS)                       Type      LVM over iSCSI
Backup (NAS / NFS)                        Shared    Yes
Images ISO (NAS / NFS)                    Default   No
Images ISO (PC / CIFS)
DVD drives
Local storage
Removable storage

This Storage Repository is detached
and not usable by this host.

Description
iSCSI SR 1172.16.0.100
(Clq.2014-01.ga.carsoso.lstgt:iscsi-u
dis: LUN 0: 0000270d83ce000: 200 GB
(FreeBSD))

```