

# Putty

## Sumario

- 1 Cliente gráfico putty para plataformas Windows e UNIX
  - ◆ 1.1 Descargar **putty** para Windows Intel x86 dende a ligazón <http://www.chiark.greenend.org.uk/~sgtatham/putty/download.html>
  - ◆ 1.2 Exemplos de conexión con Putty
    - ◇ 1.2.1 Exemplo 1. Conexión a través do Porto Serie COM1. Configuración Switch HPPROCURVE 2424M
      - 1.2.1.1 Imaxe Panel\_Frontal Switch HPProcurve 2424M
      - 1.2.1.2 Establecer a conexión Serie co Switch
    - ◇ 1.2.2 Exemplo 2. Configuracións de putty para establecer unha conexión SSH
- 2 Comandos putty
  - ◆ 2.1 Comando pscp para copias mediante conexións cifradas SSH
    - ◇ 2.1.1 Descargar **pscp** para Windows Intel x86 dende a ligazón <http://www.chiark.greenend.org.uk/~sgtatham/putty/download.html>
    - ◇ 2.1.2 Exemplo pscp
  - ◆ 2.2 Comando psftp para transferencia de arquivos mediante conexións cifradas SSH
    - ◇ 2.2.1 Descargar **psftp** para Windows Intel x86 dende a ligazón <http://www.chiark.greenend.org.uk/~sgtatham/putty/download.html>
    - ◇ 2.2.2 Exemplo psftp

## Cliente gráfico putty para plataformas Windows e UNIX

### Descargar putty para Windows Intel x86 dende a ligazón

<http://www.chiark.greenend.org.uk/~sgtatham/putty/download.html>

**PuTTY Download Page**

[Home](#) | [License](#) | [FAQ](#) | [Docs](#) | [Download](#) | [Keys](#) | [Links](#)  
[Mirrors](#) | [Updates](#) | [Feedback](#) | [Changes](#) | [Wishlist](#) | [Team](#)

Here are the PuTTY files themselves:

- PuTTY (the Telnet and SSH client itself)
- PSCP (an SCP client, i.e. command-line secure file copy)
- PSFTP (an SFTP client, i.e. general file transfer sessions much like FTP)
- PuTTYtel (a Telnet-only client)
- Pink (a command-line interface to the PuTTY back ends)
- Pageant (an SSH authentication agent for PuTTY, PSCP and Pink)
- PuTTYgen (an RSA and DSA key generation utility).

**LEGAL WARNING:** Use of PuTTY, PSCP, PSFTP and Pink is illegal in countries where encryption is outlawed. I believe it is legal to use PuTTY, PSCP, PSFTP and Pink in England and Wales and in many other countries, but I am not a lawyer and so if in doubt you should seek legal advice before downloading it. You may find [this site](#) useful (it's a survey of cryptography laws in many countries) but I can't vouch for its correctness.

Use of the Telnet-only binary (PuTTYtel) is unrestricted by any cryptography laws.

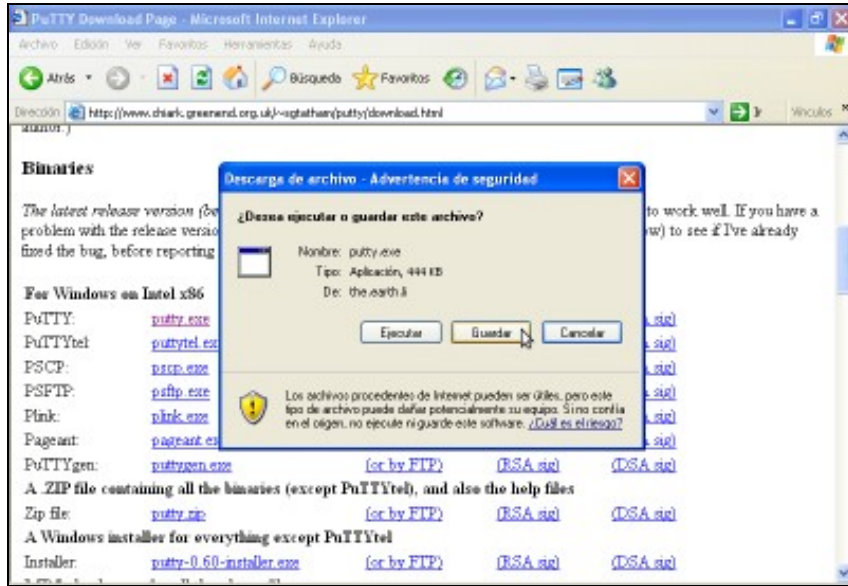
**Binaries**

The latest release version (beta 0.60). This will generally be a version I think is reasonably likely to problem with the release version, it might be worth trying out the latest development snapshot (below) fixed the bug, before reporting it to me.

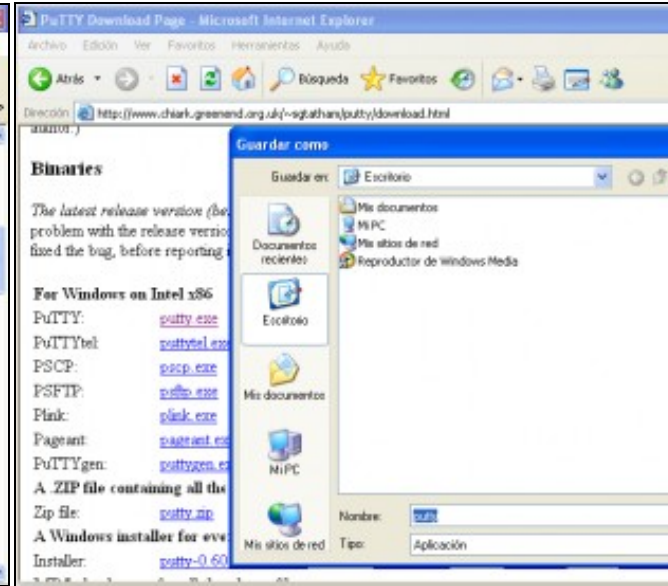
**For Windows on Intel x86**

PuTTY:	<a href="#">putty.exe</a>	<a href="#">(or by FTP)</a>	<a href="#">(RSA sig)</a>	<a href="#">(DSA sig)</a>
PuTTYtel:	<a href="#">puttytel.exe</a>	<a href="#">(or by FTP)</a>	<a href="#">(RSA sig)</a>	<a href="#">(DSA sig)</a>
PSCP:	<a href="#">pscp.exe</a>	<a href="#">(or by FTP)</a>	<a href="#">(RSA sig)</a>	<a href="#">(DSA sig)</a>
PSFTP:	<a href="#">psftp.exe</a>	<a href="#">(or by FTP)</a>	<a href="#">(RSA sig)</a>	<a href="#">(DSA sig)</a>
Pink:	<a href="#">pink.exe</a>	<a href="#">(or by FTP)</a>	<a href="#">(RSA sig)</a>	<a href="#">(DSA sig)</a>
Pageant:	<a href="#">pageant.exe</a>	<a href="#">(or by FTP)</a>	<a href="#">(RSA sig)</a>	<a href="#">(DSA sig)</a>
PuTTYgen:	<a href="#">puttygen.exe</a>	<a href="#">(or by FTP)</a>	<a href="#">(RSA sig)</a>	<a href="#">(DSA sig)</a>
A ZIP file containing all the binaries (except PuTTYtel), and also the help files				
Zip file:	<a href="#">putty.zip</a>	<a href="#">(or by FTP)</a>	<a href="#">(RSA sig)</a>	<a href="#">(DSA sig)</a>
A Windows installer for everything except PuTTYtel				
Installer:	<a href="#">putty-0.60-installer.exe</a>	<a href="#">(or by FTP)</a>	<a href="#">(RSA sig)</a>	<a href="#">(DSA sig)</a>
MD5 checksums for all the above files				

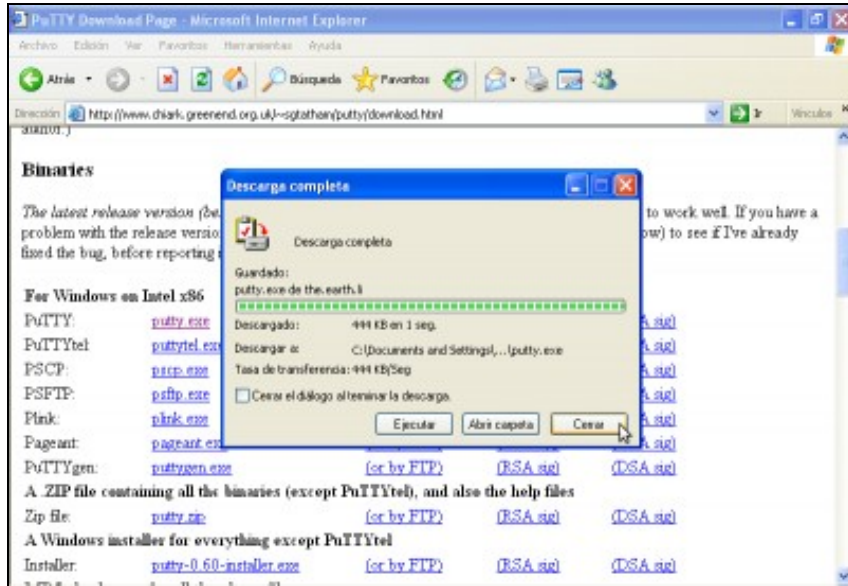
a. URL putty



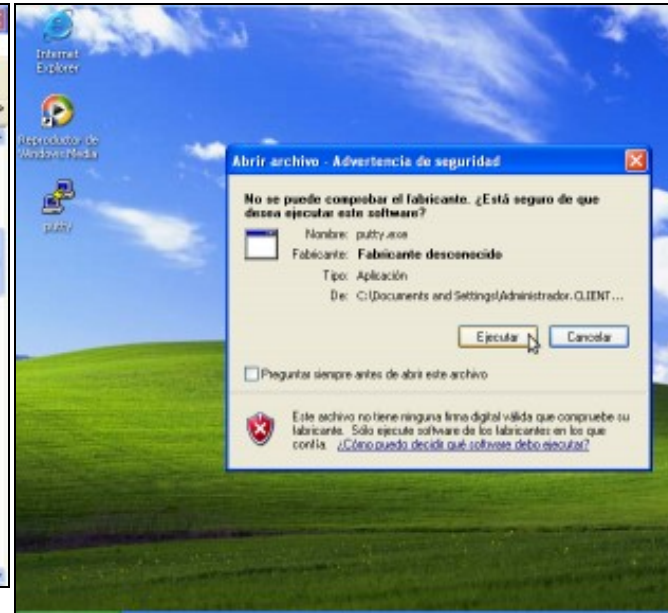
b. Descarga para Windows Intel x86



c. Elixir guardar descarga



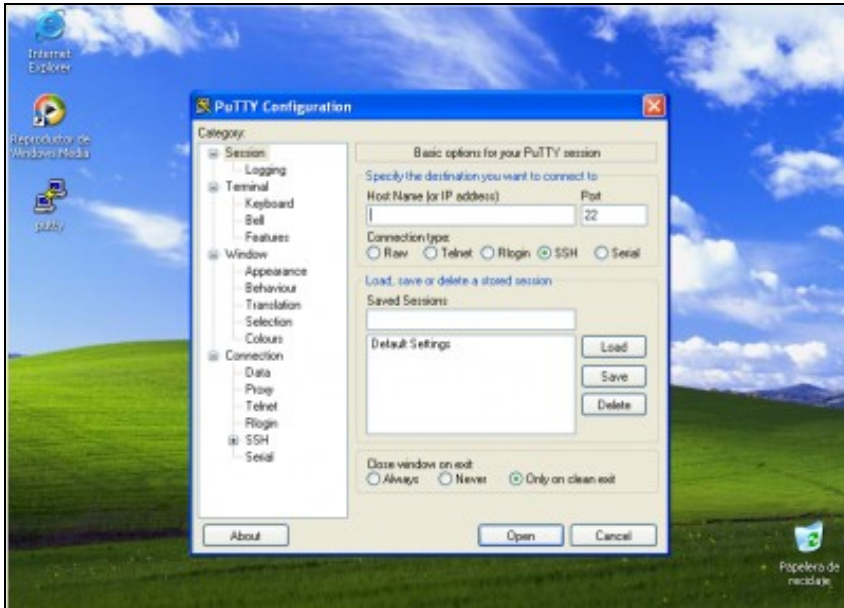
d. Descargar no Escritorio



e. Descargando... Descarga completa. Pechar

f. Lanzar putty.

Dobre click icona **putty**--> Deseleccionar *Preguntar siempre de* para evitar que en próximas execuci3ns de **putty** aparezca este di3logo. *Ejecutar*



e. Interface gr3fica putty

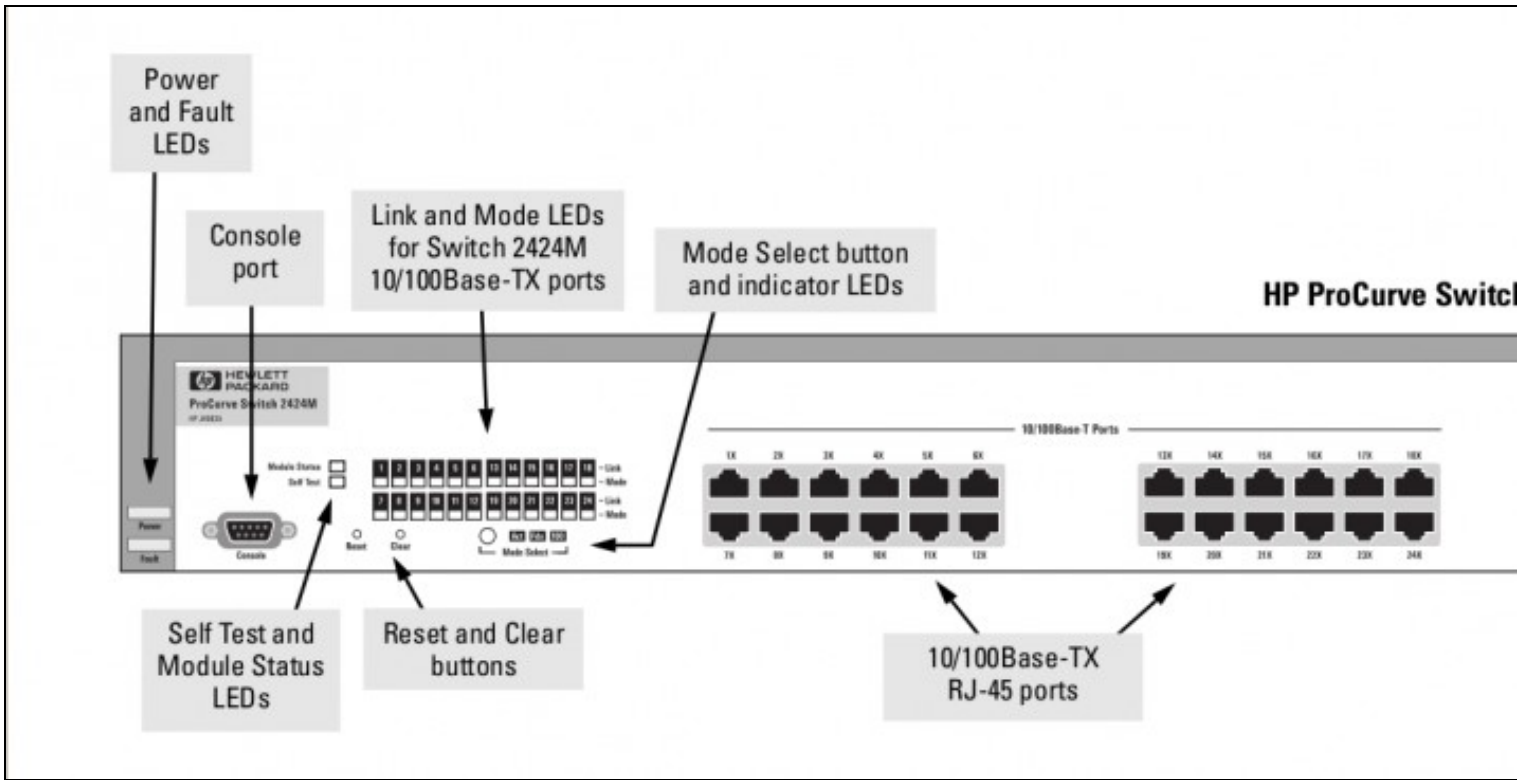
## Exemplos de conexi3n con Putty

### Exemplo 1. Conexi3n a trav3s do Porto Serie COM1. Configuraci3n Switch HPPROCURVE 2424M

#### NOTAS:

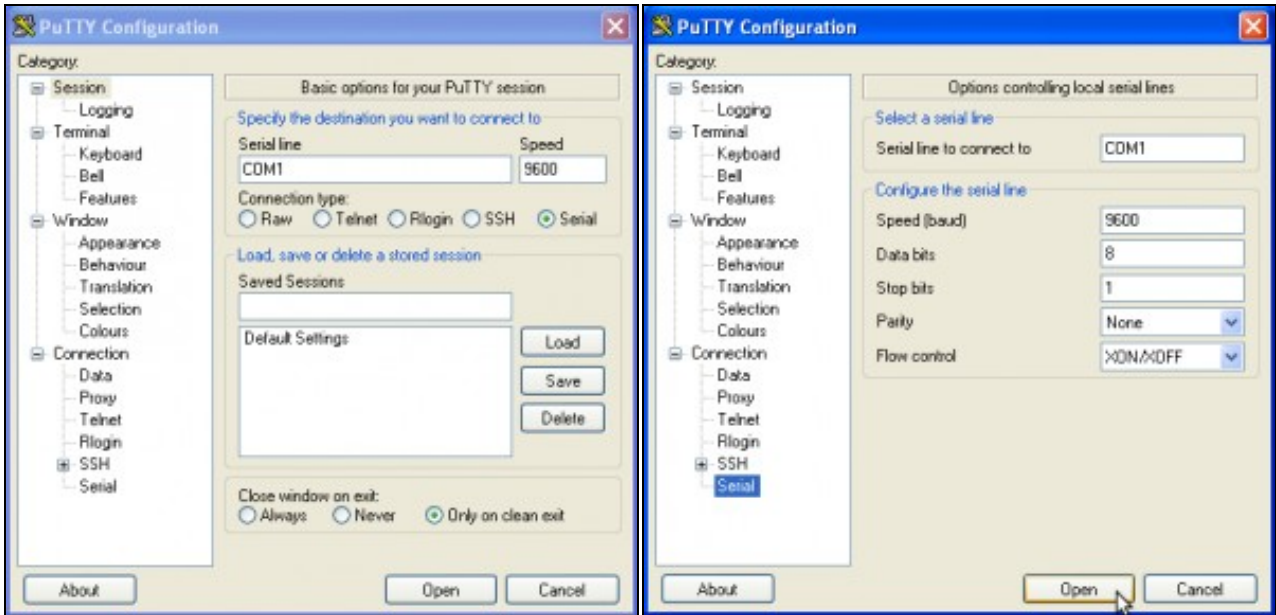
1. Picar nas imaxes para velas no tama1o orixinal
2. Para establecer a conexi3n neces3tase un cable serie entre o Host que lanza Putty e o Switch a configurar.
3. Manuais HPPROCURVE SWITCH 2424M:
  - ◆ [Installation Guide](#)
  - ◆ [Management e Configuration Switch](#)
4. Quiz3s che interese o programa [minicom](#) para establecer a conexi3n serie mediante li1a de comandos nun terminal Linux

Imaxe Panel\_Frontal Switch HPProcurve 2424M



**Establecer a conexión Serie co Switch**

1. Pulsar **Reset Button** (ver imaxe), para recuperar a configuración inicial do Switch.
2. Pulsar **Clear Button** (ver imaxe), durante ao menos 1 segundo para resetear calquera password que puideramos ter configurada para unha conexión serie.
3. Configurar **putty** para establecer a conexión en serie co Switch:

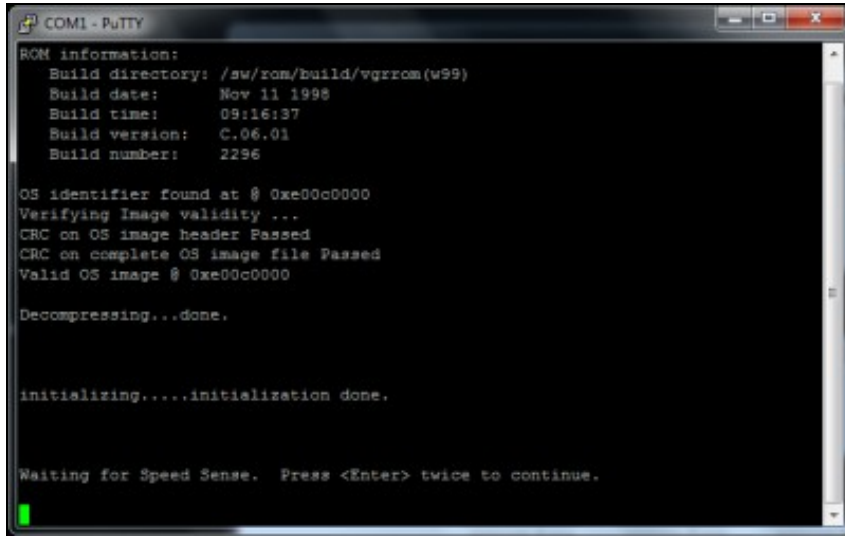


## b. Parámetros conexión Serial.

Deixamos a configuración por defecto e picamos en **Open** para establecer a conexión.

## a. Activar opción Serial

4. Establecendo a conexión co Switch. Proceder:



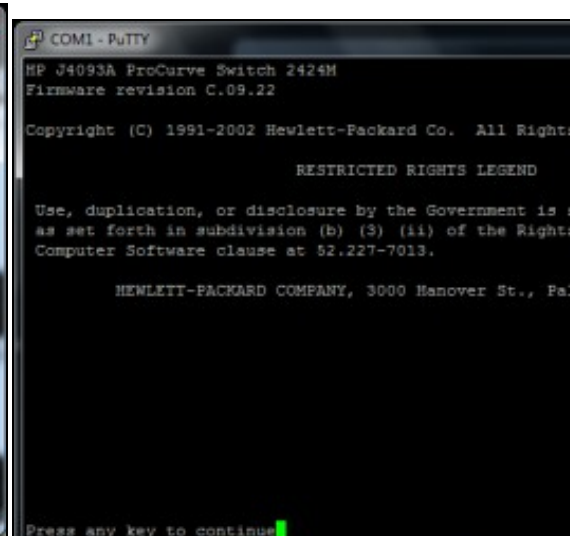
```
COM1 - PuTTY
ROM information:
  Build directory: /sw/rom/build/vgrzrom(w99)
  Build date: Nov 11 1998
  Build time: 09:16:37
  Build version: C.06.01
  Build number: 2296

OS identifier found at @ 0xc00c0000
Verifying Image validity ...
CRC on OS image header Passed
CRC on complete OS image file Passed
Valid OS image @ 0xc00c0000

Decompressing...done.

initializing....initialization done.

Waiting for Speed Sense. Press <Enter> twice to continue.
```



```
COM1 - PuTTY
HP J4093A ProCurve Switch 2424M
Firmware revision C.09.22

Copyright (C) 1991-2002 Hewlett-Packard Co. All Rights Reserved.

RESTRICTED RIGHTS LEGEND

Use, duplication, or disclosure by the Government is prohibited
as set forth in subdivision (b) (3) (ii) of the Rights in
Computer Software clause at 52.227-7013.

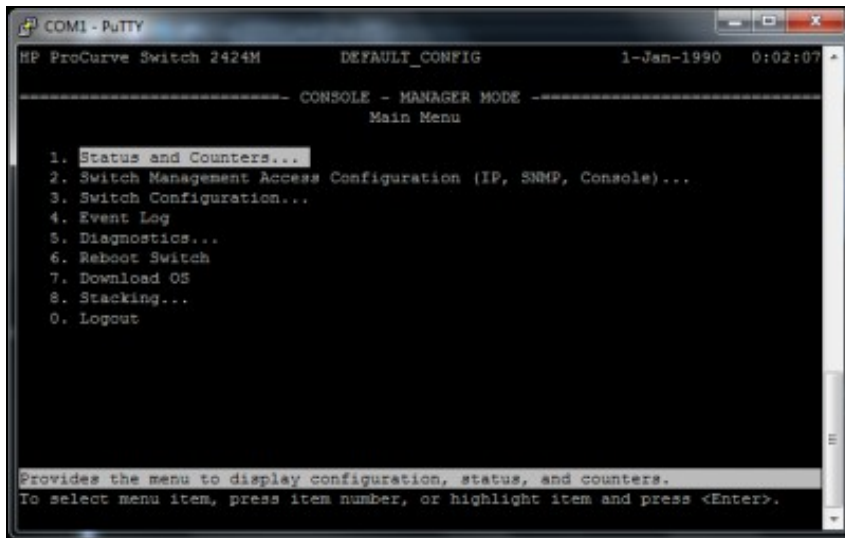
HEWLETT-PACKARD COMPANY, 3000 Hanover St., Palo Alto, CA 94304

Press any key to continue
```

## a. Inicializando conexión....

Pulsar 2 veces **Enter** para continuar.

## b. Pulsar calquera tecla para continuar.

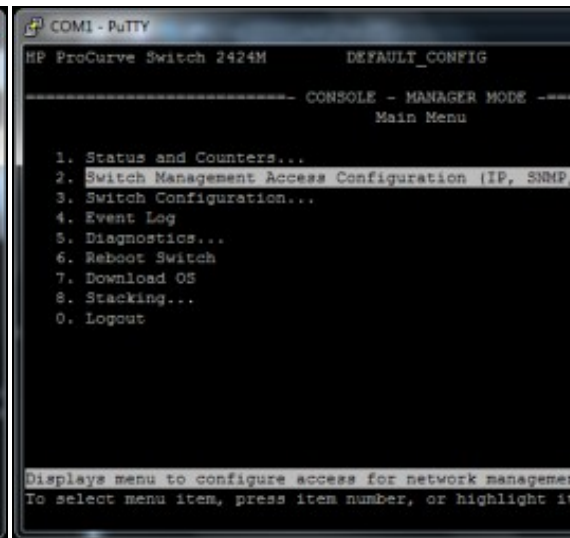


```
COM1 - PuTTY
HP ProCurve Switch 2424M          DEFAULT_CONFIG          1-Jan-1990  0:02:07

----- CONSOLE - MANAGER MODE -----
Main Menu

1. Status and Counters...
2. Switch Management Access Configuration (IP, SNMP, Console)...
3. Switch Configuration...
4. Event Log
5. Diagnostics...
6. Reboot Switch
7. Download OS
8. Stacking...
0. Logout

Provides the menu to display configuration, status, and counters.
To select menu item, press item number, or highlight item and press <Enter>.
```



```
COM1 - PuTTY
HP ProCurve Switch 2424M          DEFAULT_CONFIG          1-Jan-1990  0:02:07

----- CONSOLE - MANAGER MODE -----
Main Menu

1. Status and Counters...
2. Switch Management Access Configuration (IP, SNMP, Console)...
3. Switch Configuration...
4. Event Log
5. Diagnostics...
6. Reboot Switch
7. Download OS
8. Stacking...
0. Logout

Displays menu to configure access for network management.
To select menu item, press item number, or highlight item and press <Enter>.
```

## c. Menú configuración Switch.

## d. Elixir a Opción 2. Switch Management Access Config

```

COMI - PuTTY
HP ProCurve Switch 2424M      DEFAULT_CONFIG      1-Jan-1990  0:02:48
----- CONSOLE - MANAGER MODE -----
Switch Management Access Configuration Menu

1. IP Configuration
2. SNMP Community Names/Authorized Managers
3. Trap Receivers
4. Console/Serial Link Configuration
5. Console Passwords...
6. IP Authorized Managers
7. Authentication Services
0. Return to Main Menu...

Configures IP service for switch management.
To select menu item, press item number, or highlight item and press <Enter>.

```

e. Elixir Opción 1. IP Configuration.

```

COMI - PuTTY
HP ProCurve Switch 2424M      DEFAULT_CONFIG      1-Jan-1990  0:02:48
----- CONSOLE - MANAGER MODE -----
Switch Management Access Configuration - Internet (IP) Service

Time Sync. mode [None] : None

IP Config [DHCP/Bootp] : DHCP/Bootp
IP Address :
Subnet Mask :
Gateway :

Actions->  C_a_n_c_e_l  E_d_i_t  S_a_v_e  H_e_l_p

Edit the fields displayed above.
Use arrow keys to change action selection and <Enter> to go to Actions.

```

f. Moverse á Edit.

NOTA: Para moverse emplegar as teclas flechas e para entrar a la configuración de cada campo presionar la tecla Enter.

```

COMI - PuTTY
HP ProCurve Switch 2424M      DEFAULT_CONFIG      1-Jan-1990  0:03:39
----- CONSOLE - MANAGER MODE -----
Switch Management Access Configuration - Internet (IP) Service

Time Sync. mode [None] : None

IP Config [DHCP/Bootp] : Manual
IP Address :
Subnet Mask :
Gateway :

Actions->  C_a_n_c_e_l  E_d_i_t  S_a_v_e  H_e_l_p

Select the method to enable IP access for switch management.
Use arrow keys to change field selection, <Space> to toggle field choices,
and <Enter> to go to Actions.

```

g. Elixir a configuración IP Manual

```

COMI - PuTTY
HP ProCurve Switch 2424M      DEFAULT_CONFIG      1-Jan-1990  0:03:39
----- CONSOLE - MANAGER MODE -----
Switch Management Access Configuration - Internet (IP) Service

Time Sync. mode [None] : None

IP Config [DHCP/Bootp] : Manual
IP Address : 10.254.0.3
Subnet Mask :
Gateway :

Actions->  C_a_n_c_e_l  E_d_i_t  S_a_v_e  H_e_l_p

Enter the IP address of the switch (or VLAN IP interface).
Use arrow keys to change field selection, <Space> to toggle field choices,
and <Enter> to go to Actions.

```

h. IP: 10.254.0.3.

```

COMI - PuTTY
HP ProCurve Switch 2424M      DEFAULT_CONFIG      1-Jan-1990  0:06:53
----- CONSOLE - MANAGER MODE -----
Switch Management Access Configuration - Internet (IP) Service

Time Sync. mode [None] : None

IP Config [DHCP/Bootp] : Manual
IP Address : 10.254.0.3
Subnet Mask : 255.0.0.0
Gateway :

Actions->  C_a_n_c_e_l  E_d_i_t  S_a_v_e  H_e_l_p

Enter the subnet mask for the IP network.
Use arrow keys to change field selection, <Space> to toggle field choices,
and <Enter> to go to Actions.

```

```

COMI - PuTTY
HP ProCurve Switch 2424M      DEFAULT_CONFIG      1-Jan-1990  0:06:53
----- CONSOLE - MANAGER MODE -----
Switch Management Access Configuration - Internet (IP) Service

Time Sync. mode [None] : None

IP Config [DHCP/Bootp] : Manual
IP Address : 10.254.0.3
Subnet Mask : 255.0.0.0
Gateway : 10.0.0.1

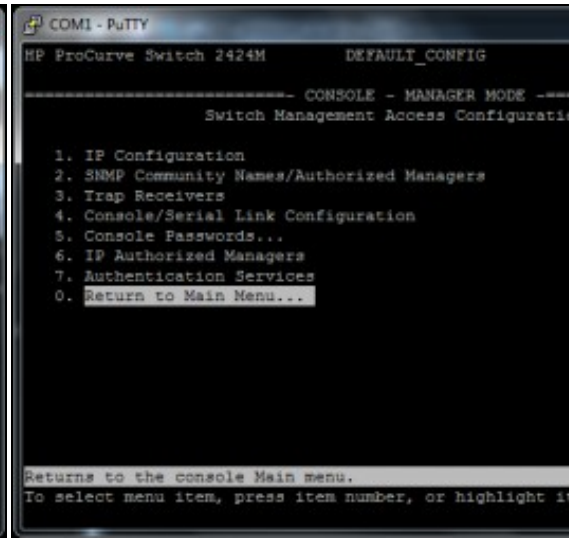
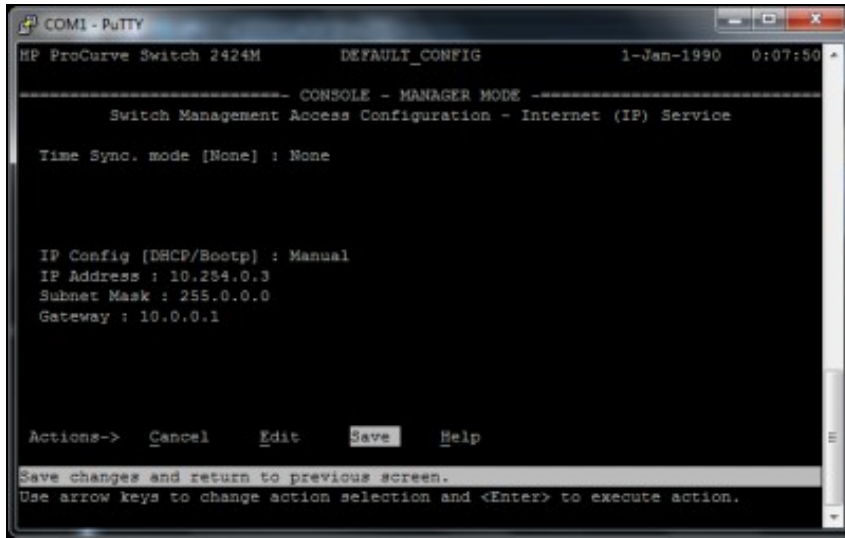
Actions->  C_a_n_c_e_l  E_d_i_t  S_a_v_e  H_e_l_p

Enter the IP address of the default gateway.
Use arrow keys to change field selection, <Space> to toggle field choices,
and <Enter> to go to Actions.

```

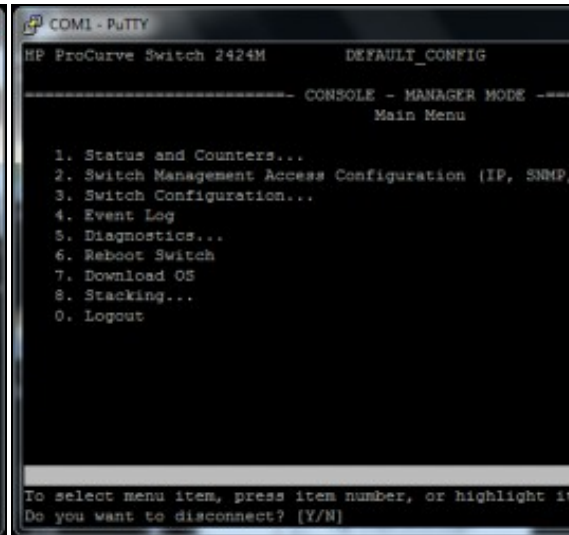
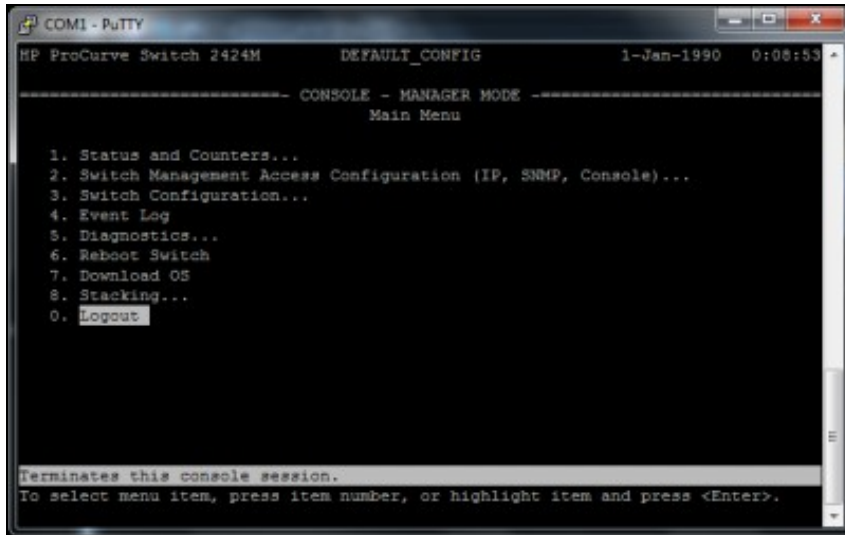
i. Máscara de Subrede: 255.0.0.0.

k. Porta de Enlace: 10.0.0.1.



l. Moverse a Save para guardar a configuración.

m. Escoller a Opción 0. Return to Main Menu... para vol



n. Escoller a Opción 0. Logout para finalizar a conexión.

ñ. Para finalizara a conexión pulsar a tecla Y.

5. Agora xa podemos acceder á configuración do Switch mediante un navegador web.

## Exemplo 2. Configuracións de putty para establecer unha conexión SSH

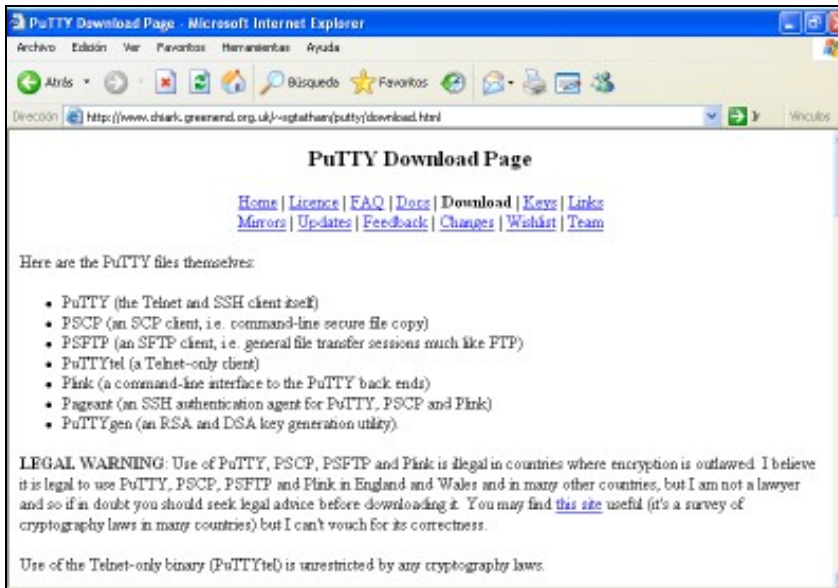
Picar na ligazón [Configuracións de putty para establecer unha conexión SSH](#)

## Comandos putty

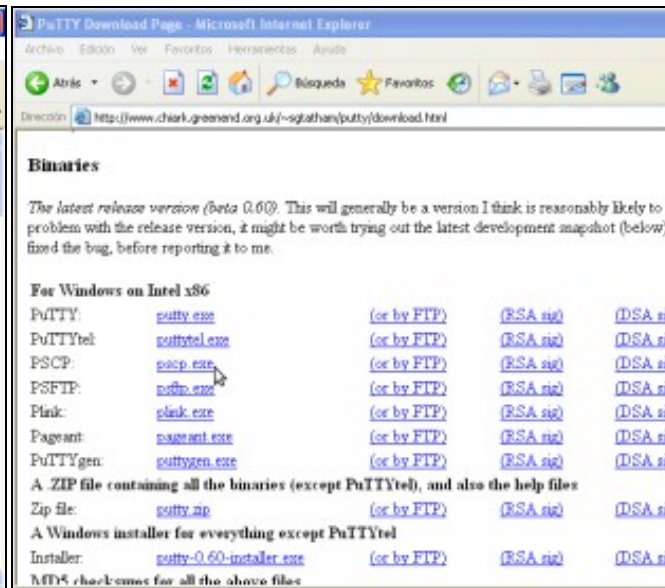
### Comando pscp para copias mediante conexións cifradas SSH

Descargar pscp para Windows Intel x86 dende a ligazón

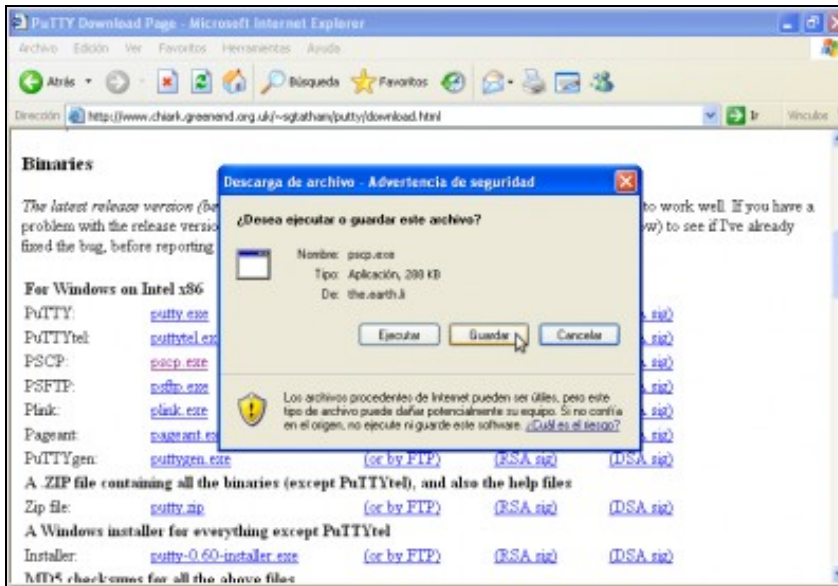
<http://www.chiark.greenend.org.uk/~sgtatham/putty/download.html>



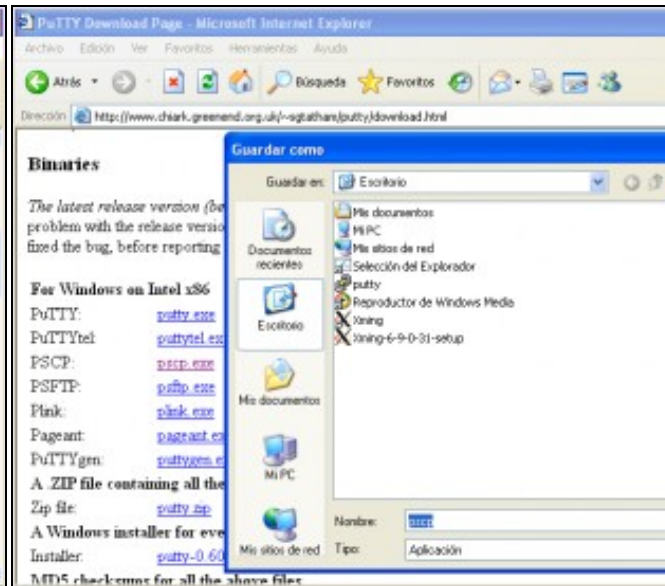
a. URL putty



b. Descarga para Windows Intel x86

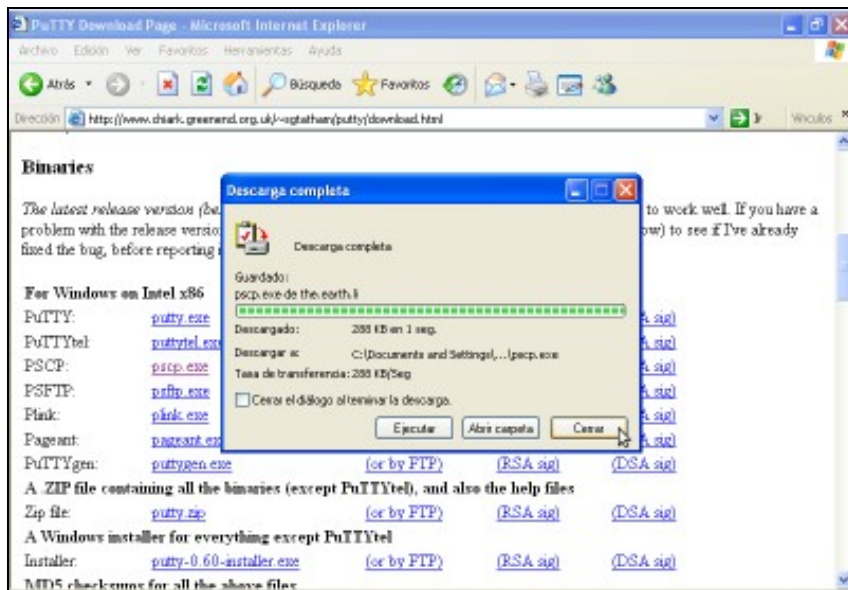


c. Elixir guardar descarga

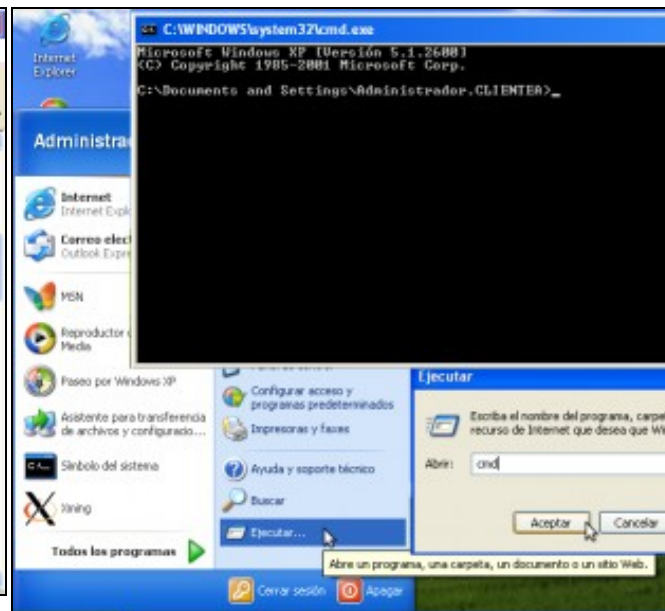


d. Descargar no Escritorio

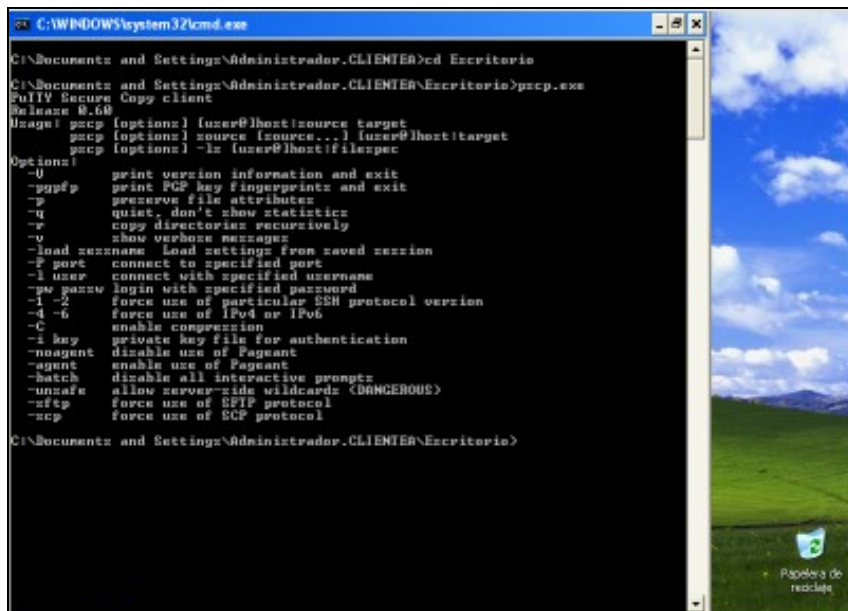




e. Descargando... Descarga completa. Pechar



f. Lanzar consola de comandos cmd (Inicio-->Ejecutar-->cmd).



e. Comando pscp.

Acceder ao cartafol Escritorio mediante o comando `cd Escritorio`.

Executar o comando `pscp.exe` para ver a súa sintaxe.

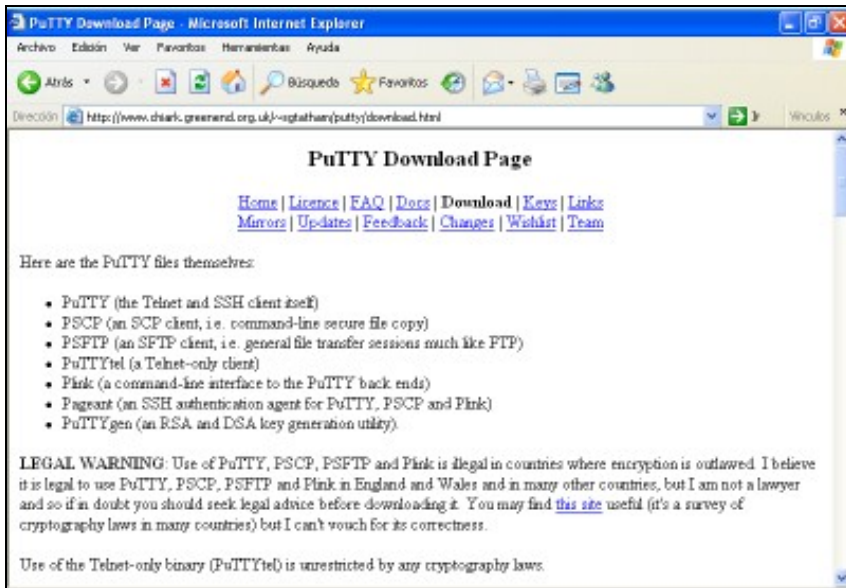
### Exemplo pscp

Picar na ligazón: [Empregando o comando pscp](#)

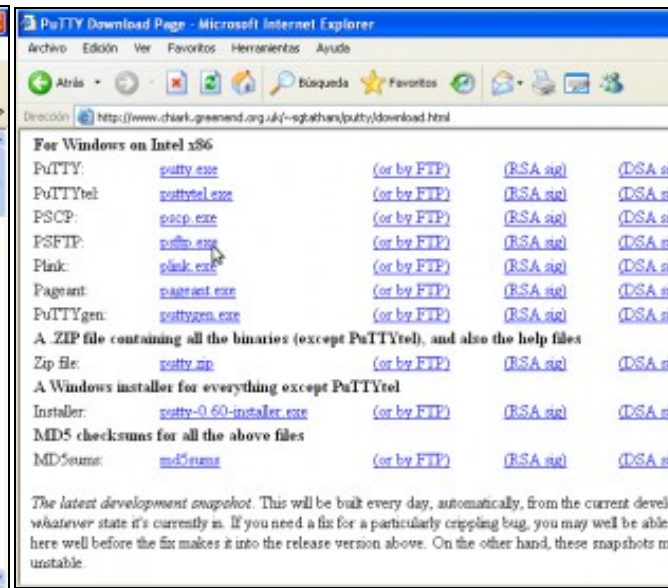
## Comando psftp para transferencia de arquivos mediante conexións cifradas SSH

Descargar psftp para Windows Intel x86 dende a ligazón

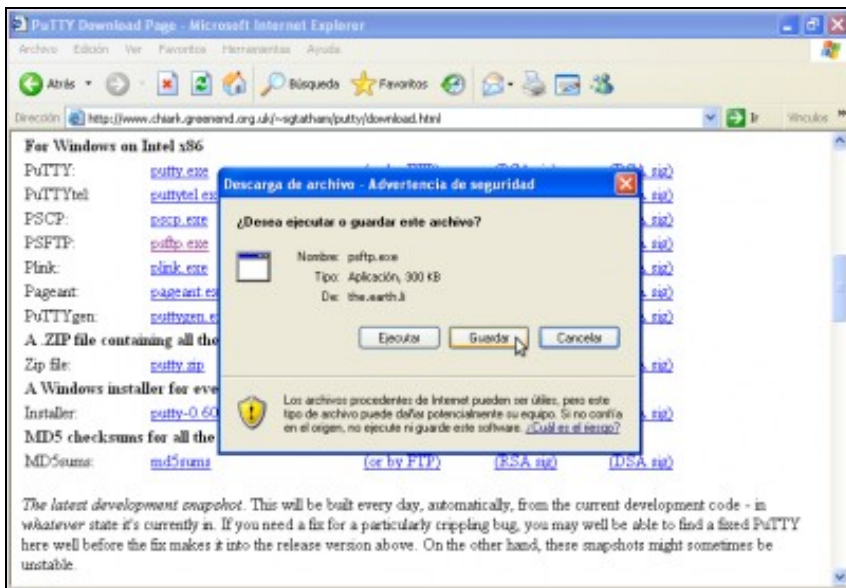
<http://www.chiark.greenend.org.uk/~sgtatham/putty/download.html>



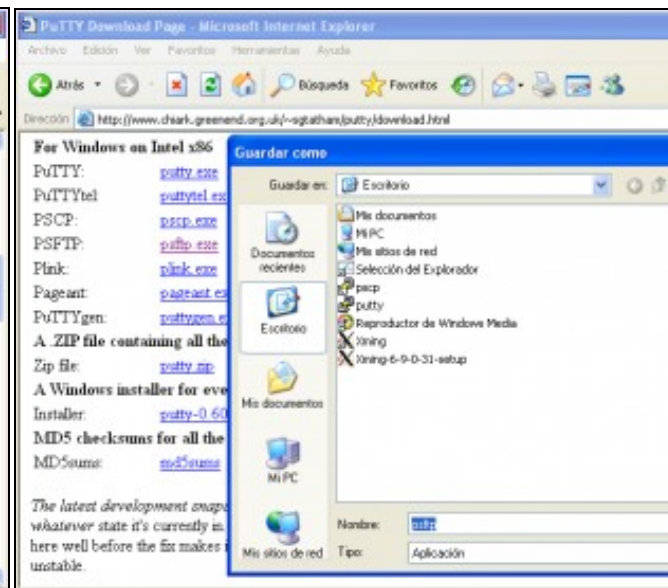
a. URL putty



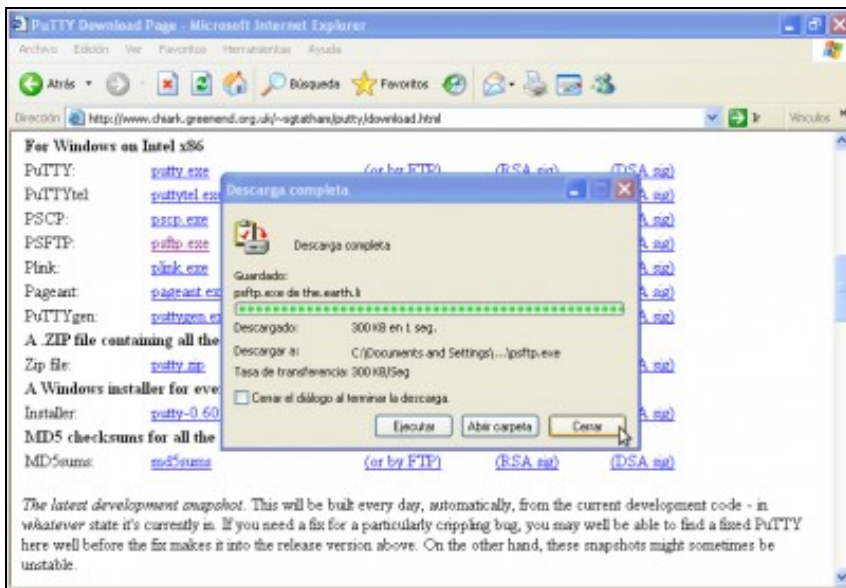
b. Descarga para Windows Intel x86



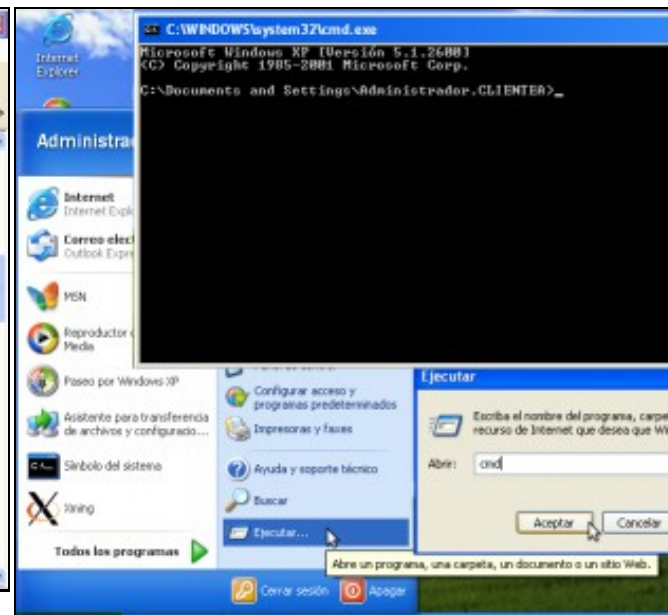
c. Elixir guardar descarga



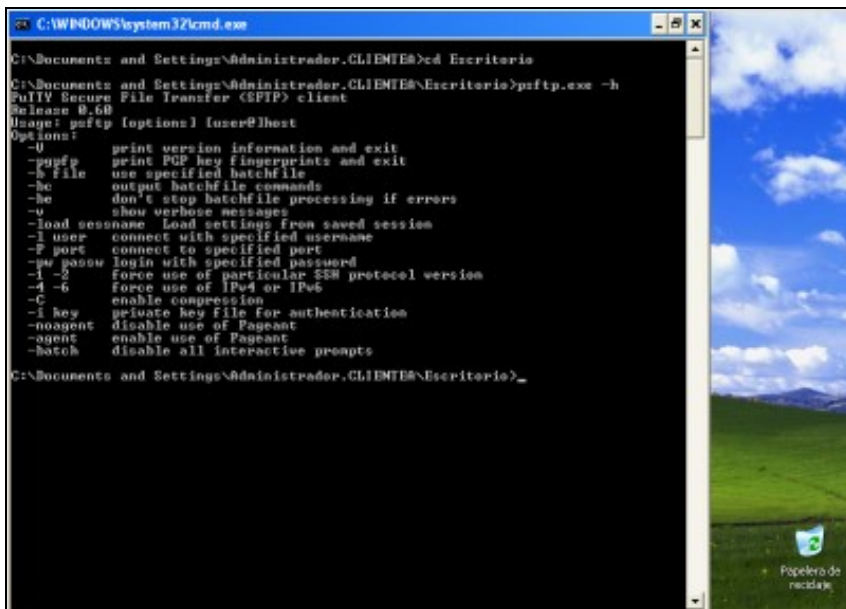
d. Descargar no Escritorio



e. Descargando... Descarga completa. Pechar



f. Lanzar consola de comandos cmd (Inicio-->Ejecutar-->cmd).



e. Comando psftp.

Acceder ao cartafol Escritorio mediante o comando **cd Escritorio**.

Executar o comando **psftp.exe -h** para ver a súa sintaxe.

### Exemplo psftp

Picar na ligazón: [Empregando o comando psftp](#)

--ricardofc [29/04/10]