

Parámetros básicos

1

```
<RelativeLayout xmlns:android="http://schemas.android.com/apk/res/android"
    xmlns:tools="http://schemas.android.com/tools"
    android:layout_width="match_parent"
    android:layout_height="match_parent"
    android:paddingBottom="@dimen/activity_vertical_margin"
    android:paddingLeft="@dimen/activity_horizontal_margin"
    android:paddingRight="@dimen/activity_horizontal_margin"
    android:paddingTop="@dimen/activity_vertical_margin"
    tools:context=".U2_02_ParBasicos" >

    <TextView
        android:layout_width="wrap_content"
        android:layout_height="wrap_content"
        android:text="@string/hello_world" />

</RelativeLayout>
```

```
<RelativeLayout xmlns:android="http://schemas.android.com/apk/res/android"
    xmlns:tools="http://schemas.android.com/tools"
    android:layout_width="match_parent"
    android:layout_height="match_parent"
    android:paddingBottom="@dimen/activity_vertical_margin"
    android:paddingLeft="@dimen/activity_horizontal_margin"
    android:paddingRight="@dimen/activity_horizontal_margin"
    android:paddingTop="@dimen/activity_vertical_margin"
    tools:context=".U2_02_ParBasicos" >

    <TextView
        android:id="@+id/textView1"
        android:layout_width="wrap_content"
        android:layout_height="wrap_content"
        android:text="@string/hello_world" />

    <Button
        android:id="@+id/button1"
        android:layout_width="wrap_content"
        android:layout_height="wrap_content"
        android:layout_below="@+id/textView1"
        android:layout_marginTop="99dp"
        android:layout_toRightOf="@+id/textView1"
        android:text="Button" />

</RelativeLayout>
```

```
<LinearLayout xmlns:android="http://schemas.android.com/apk/res/android"
    xmlns:tools="http://schemas.android.com/tools"
    android:layout_width="match_parent"
    android:layout_height="match_parent"
    android:orientation="vertical">

    <TextView
        android:id="@+id/textView1"
        android:layout_width="wrap_content"
        android:layout_height="wrap_content"
        android:text="@string/hello_world" />

</LinearLayout>
```

```
<LinearLayout xmlns:android="http://schemas.android.com/apk/res/android"
    xmlns:tools="http://schemas.android.com/tools"
    android:layout_width="match_parent"
    android:layout_height="match_parent"
    android:orientation="vertical">

    <TextView
        android:id="@+id/textView1"
        android:layout_width="wrap_content"
        android:layout_height="wrap_content"
        android:text="@string/hello_world" />

    <TextView
        android:layout_width="wrap_content"
        android:layout_height="wrap_content"
        android:text="O meu primeiro texto"/>

</LinearLayout>
```

```
<LinearLayout xmlns:android="http://schemas.android.com/apk/res/android"
    xmlns:tools="http://schemas.android.com/tools"
    android:layout_width="match_parent"
    android:layout_height="match_parent"
    android:orientation="vertical">

    <TextView
        android:id="@+id/textView1"
        android:layout_width="wrap_content"
        android:layout_height="wrap_content"
        android:text="@string/hello_world" />

    <TextView
        android:layout_width="wrap_content"
        android:layout_height="wrap_content"
        android:textColor="#F00"
        android:layout_marginLeft="20sp"
        android:textStyle="bold"
        android:textSize="22sp"
        android:text="O meu primeiro texto"/>

    <TextView
        android:layout_width="wrap_content"
        android:layout_height="wrap_content"
        android:background="#000"
        android:textColor="#FFF"
        android:textStyle="bold|italic"
        android:typeface="serif"
        android:text="Negriña, cursiva e serif"/>

    <TextView
        android:layout_width="match_parent"
        android:layout_height="wrap_content"
        android:background="#00F"
        android:textColor="#FFF"
        android:text="Ocupando o ancho do pai"/>

</LinearLayout>
```

```
<LinearLayout xmlns:android="http://schemas.android.com/apk/res/android"
    xmlns:tools="http://schemas.android.com/tools"
    android:layout_width="match_parent"
    android:layout_height="match_parent"
    android:orientation="vertical">

    <TextView
        android:id="@+id/textView1"
        android:layout_width="wrap_content"
```

```

        android:layout_height="wrap_content"
        android:text="@string/hello_world" />

<TextView
    android:layout_width="wrap_content"
    android:layout_height="wrap_content"
    android:textColor="#F00"
    android:layout_marginLeft="20sp"
    android:textStyle="bold"
    android:textSize="22sp"
    android:text="O meu primeiro texto"/>

<TextView
    android:layout_width="wrap_content"
    android:layout_height="wrap_content"
    android:background="#000"
    android:textColor="#FFF"
    android:textStyle="bold|italic"
    android:typeface="serif"
    android:text="Negriña, cursiva e serif"/>

<TextView
    android:layout_width="match_parent"
    android:layout_height="wrap_content"
    android:background="#00F"
    android:textColor="#FFF"
    android:textStyle="bold"
    android:text="Ocupando o ancho do pai"/>

<TextView
    android:layout_width="wrap_content"
    android:layout_height="match_parent"
    android:background="#F00"
    android:textColor="#FFF"
    android:textStyle="bold"
    android:text="Ocupando o resto do alto do pai" />

</LinearLayout>

<LinearLayout xmlns:android="http://schemas.android.com/apk/res/android"
    xmlns:tools="http://schemas.android.com/tools"
    android:layout_width="match_parent"
    android:layout_height="match_parent"
    android:orientation="vertical">

    <TextView
        android:id="@+id/textView1"
        android:layout_width="wrap_content"
        android:layout_height="wrap_content"
        android:text="@string/hello_world" />

    <TextView
        android:layout_width="wrap_content"
        android:layout_height="wrap_content"
        android:textColor="#F00"
        android:layout_marginLeft="20sp"
        android:textStyle="bold"
        android:textSize="22sp"
        android:text="O meu primeiro texto"/>

    <TextView
        android:layout_width="wrap_content"
        android:layout_height="wrap_content"
        android:background="#000"
        android:textColor="#FFF"
        android:textStyle="bold|italic"
        android:typeface="serif"
        android:text="Negriña, cursiva e serif"/>

    <TextView
        android:layout_width="match_parent"
        android:layout_height="wrap_content"
        android:gravity="right"

```

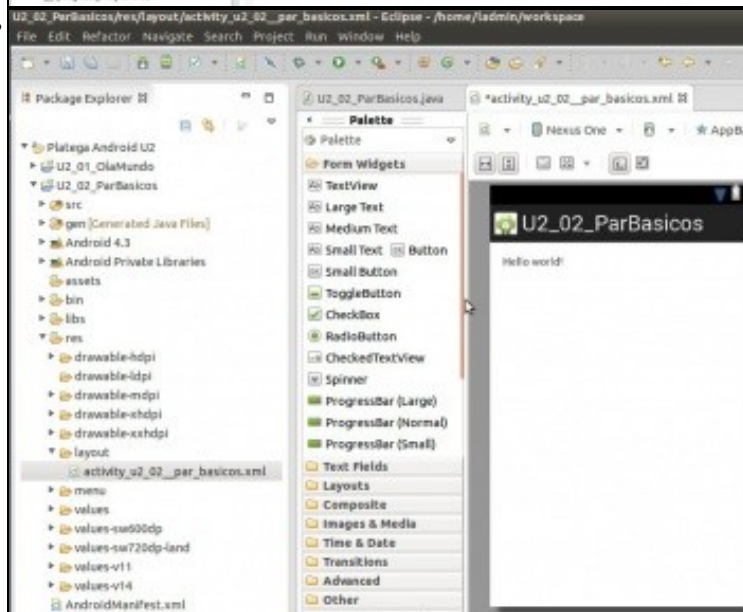
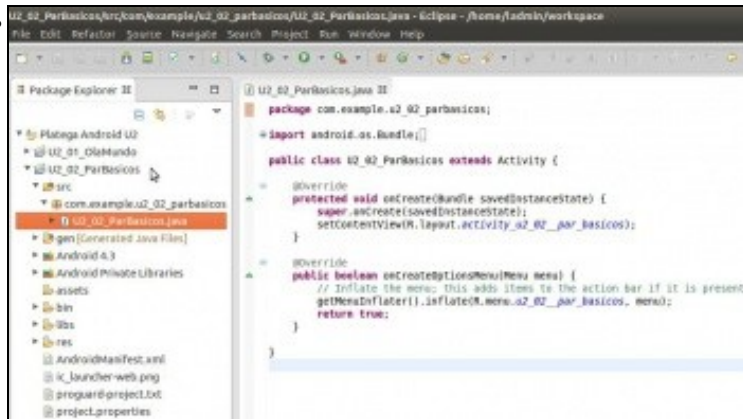
```
android:background="#00F"  
android:textColor="#FFF"  
android:textStyle="bold"  
android:text="Ocupando o ancho do pai"/>
```

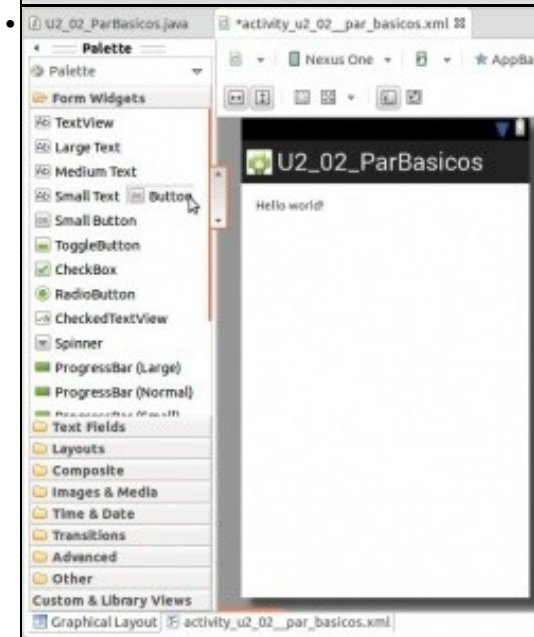
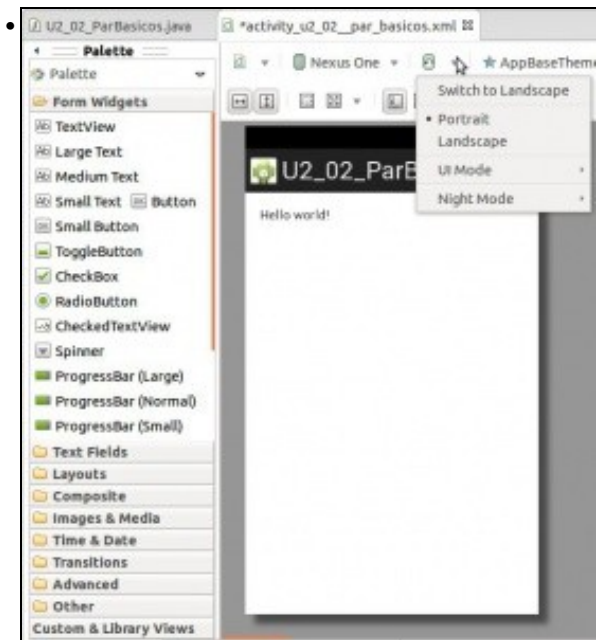
```
<TextView  
    android:layout_width="wrap_content"  
    android:layout_height="match_parent"  
    android:layout_gravity="right"  
    android:background="#F00"  
    android:textColor="#FFF"  
    android:textStyle="bold"  
    android:text="Ocupando o resto do alto do pai" />
```

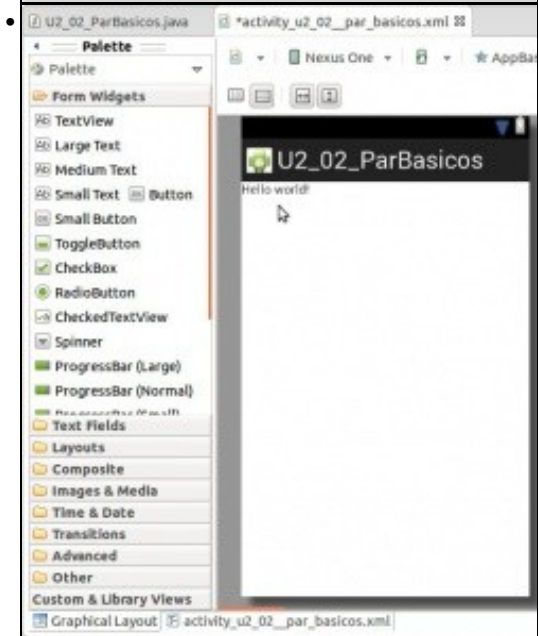
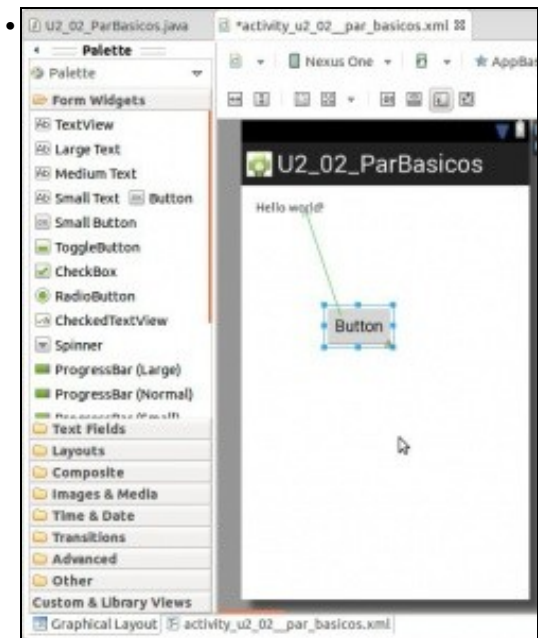
```
</LinearLayout>
```

Imaxes

- Parámetros básicos







```

U2_02_ParBasicos.java  *activity_u2_02_par_basicsos.xml
<LinearLayout xmlns:android="http://schemas.android.com/apk/res/android"
    xmlns:tools="http://schemas.android.com/tools"
    android:layout_width="match_parent"
    android:layout_height="match_parent"
    android:orientation="vertical">
    <TextView
        android:id="@+id/textView1"
        android:layout_width="wrap_content"
        android:layout_height="wrap_content"
        android:text="@string/hello_world" />
    <Te|
    <TextClock />
    <TextSwitcher ></TextSwitcher>
    <TextView />
    <TextureView />
  
```

```

U2_02_ParBasicos.java *activity_u2_02_par_basicos.xml
<LinearLayout xmlns:android="http://schemas.android.com/apk/res/android"
    xmlns:tools="http://schemas.android.com/tools"
    android:layout_width="match_parent"
    android:layout_height="match_parent"
    android:orientation="vertical">

    <TextView
        android:id="@+id/textView1"
        android:layout_width="wrap_content"
        android:layout_height="wrap_content"
        android:text="@string/hello_world" />

    <TextView />

</LinearLayout>

```

android

- android:layout_width
- android:layout_height
- android:layout_weight
- android:layout_gravity
- android:layout_margin
- android:layout_marginLeft
- android:layout_marginTop
- android:layout_marginRight
- android:layout_marginBottom
- android:layout_marginStart

Specifies the basic width of the view. [dimension, enum]

```

<TextView
    android:layout_width="*"
    />
</LinearLayout>

```

- fill_parent
- match_parent
- wrap_content

```

U2_02_ParBasicos.java *activity_u2_02_par_basicos.xml
<LinearLayout xmlns:android="http://schemas.android.com/apk/res/android"
    xmlns:tools="http://schemas.android.com/tools"
    android:layout_width="match_parent"
    android:layout_height="match_parent"
    android:orientation="vertical">

    <TextView
        android:id="@+id/textView1"
        android:layout_width="wrap_content"
        android:layout_height="wrap_content"
        android:text="@string/hello_world" />

    <TextView
        android:layout_width="wrap_content"
        android:layout_height="wrap_content"
        android:text="0 meu primeiro texto"/>

</LinearLayout>

```

```

U2_02_ParBasicos.java *activity_u2_02_par_basicos.xml
<LinearLayout xmlns:android="http://schemas.android.com/apk/res/android"
    xmlns:tools="http://schemas.android.com/tools"
    android:layout_width="match_parent"
    android:layout_height="match_parent"
    android:orientation="vertical">

    <TextView
        android:id="@+id/textView1"
        android:layout_width="wrap_content"
        android:layout_height="wrap_content"
        android:text="@string/hello_world" />

    <TextView
        android:layout_width="wrap_content"
        android:layout_height="wrap_content"
        android:text="0 meu primeiro texto"/>

</LinearLayout>

```

[118N] Hardcoded string "0 meu primeiro texto", should use @string resource



- ```
<TextView
 android:layout_width="wrap_content"
 android:layout_height="wrap_content"
 android:textColor="#F00"
 android:layout_marginLeft="20sp"
 android:textStyle=""
 android:text="O meu primeiro texto" />
```

A dropdown menu is open, showing text style options:  normal,  bold, and  italic.

- ```
<TextView
  android:layout_width="wrap_content"
  android:layout_height="wrap_content"
  android:textColor="#F00"
  android:layout_marginLeft="20sp"
  android:textStyle="bold"
  android:textSize="22sp"
  android:text="O meu primeiro texto" />
```

