

1 Putty

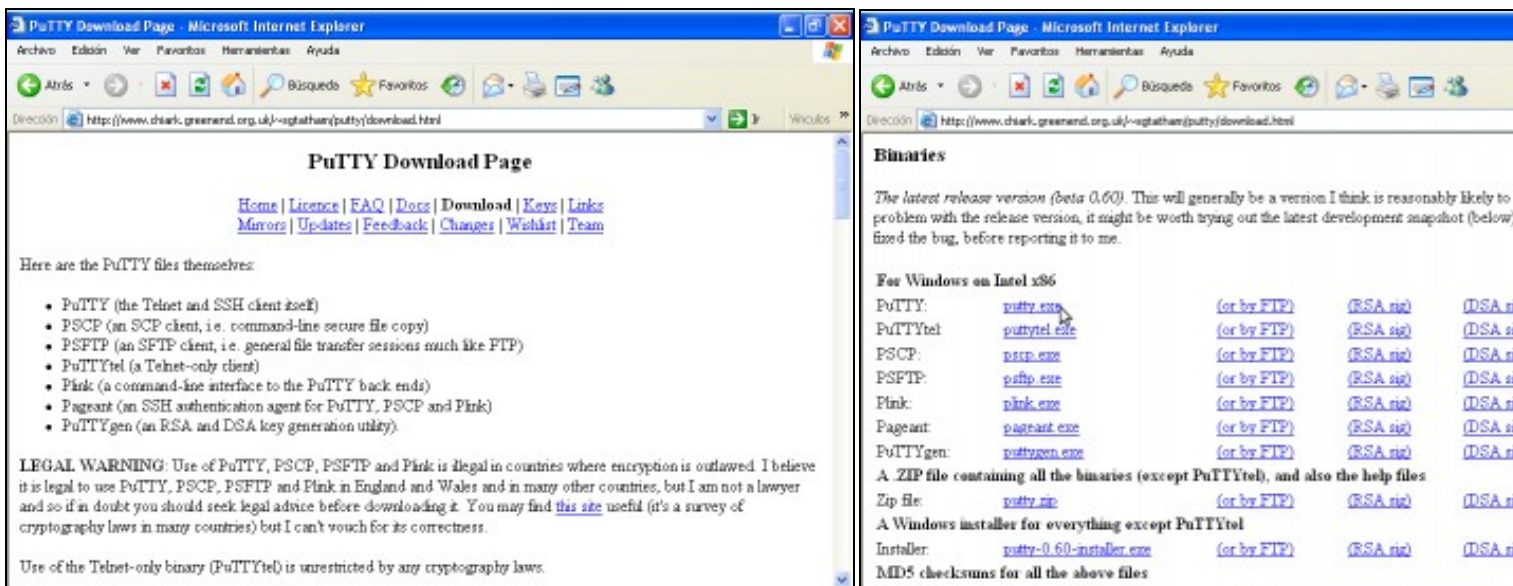
1.1 Sumario

- 1 Cliente gráfico putty para plataformas Windows e UNIX
 - ◆ 1.1 Descargar **putty** para Windows Intel x86 dende a ligazón <http://www.chiark.greenend.org.uk/~sgtatham/putty/download.html>
 - ◆ 1.2 Exemplos de conexión con Putty
 - ◇ 1.2.1 Exemplo 1. Conexión a través do Porto Serie COM1. Configuración Switch HPPROCURVE 2424M
 - 1.2.1.1 Imaxe Panel_Frontal Switch HPProcurve 2424M
 - 1.2.1.2 Establecer a conexión Serie co Switch
 - ◇ 1.2.2 Exemplo 2. Configuracións de putty para establecer unha conexión SSH
- 2 Comandos putty
 - ◆ 2.1 Comando pscp para copias mediante conexións cifradas SSH
 - ◇ 2.1.1 Descargar **pscp** para Windows Intel x86 dende a ligazón <http://www.chiark.greenend.org.uk/~sgtatham/putty/download.html>
 - ◇ 2.1.2 Exemplo pscp
 - ◆ 2.2 Comando psftp para transferencia de arquivos mediante conexións cifradas SSH
 - ◇ 2.2.1 Descargar **psftp** para Windows Intel x86 dende a ligazón <http://www.chiark.greenend.org.uk/~sgtatham/putty/download.html>
 - ◇ 2.2.2 Exemplo psftp

2 Cliente gráfico putty para plataformas Windows e UNIX

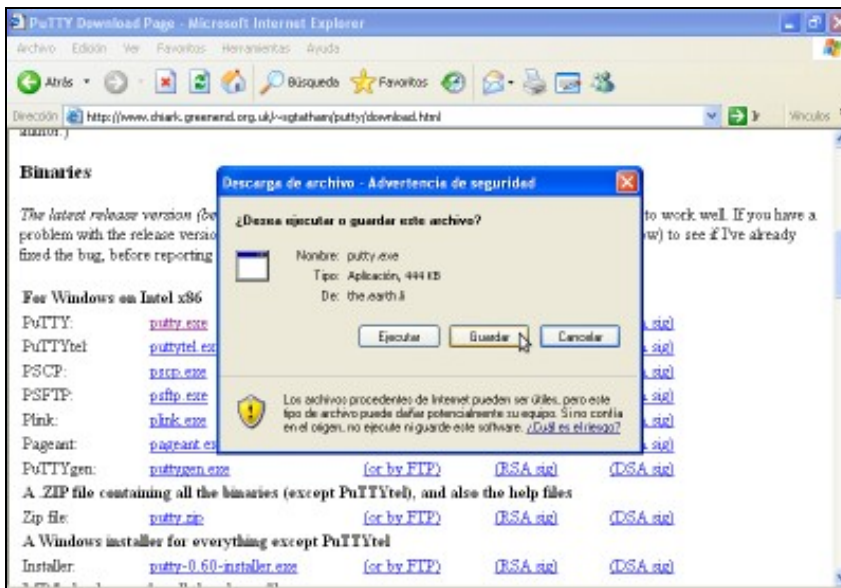
2.1 Descargar putty para Windows Intel x86 dende a ligazón

<http://www.chiark.greenend.org.uk/~sgtatham/putty/download.html>

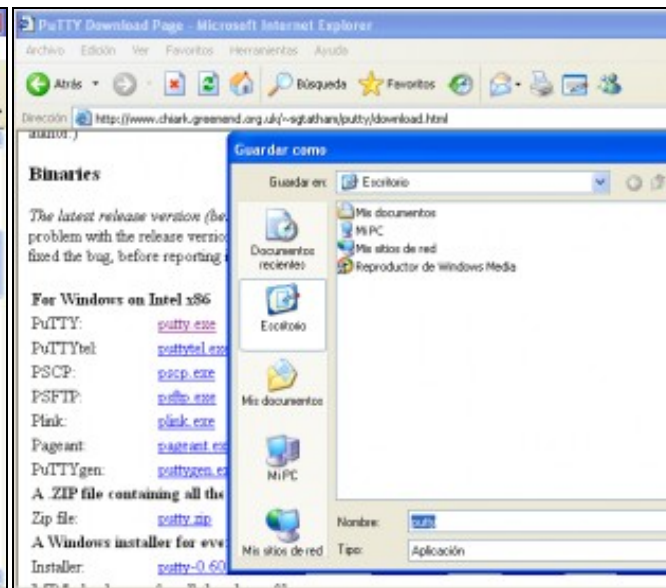


a. URL putty

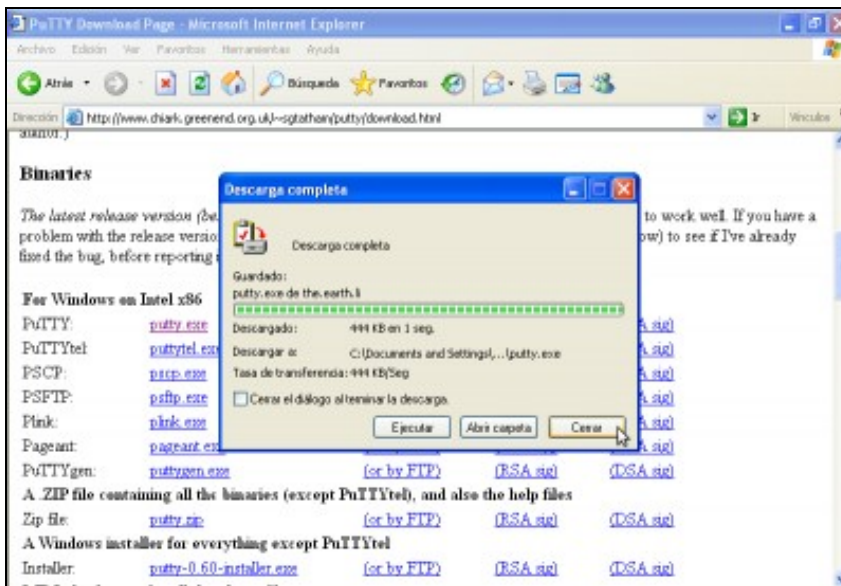
b. Descarga para Windows Intel x86



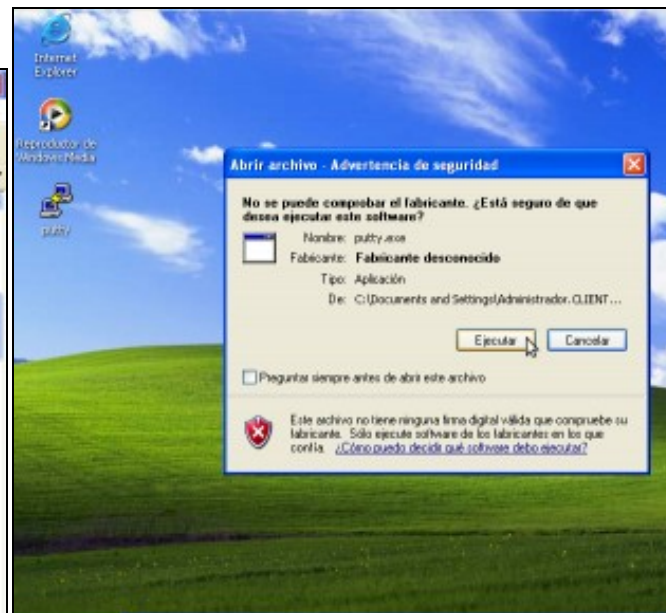
c. Elixir guardar descarga



d. Descargar no Escritorio



e. Descargando... Descarga completa. Pechar



f. Lanzar putty.

Doble click icona **putty**--> Deseleccionar *Preguntar siempre de* para evitar que en próximas ejecuciones de **putty** aparezca este diálogo *Ejecutar*



e. Interface gráfica putty

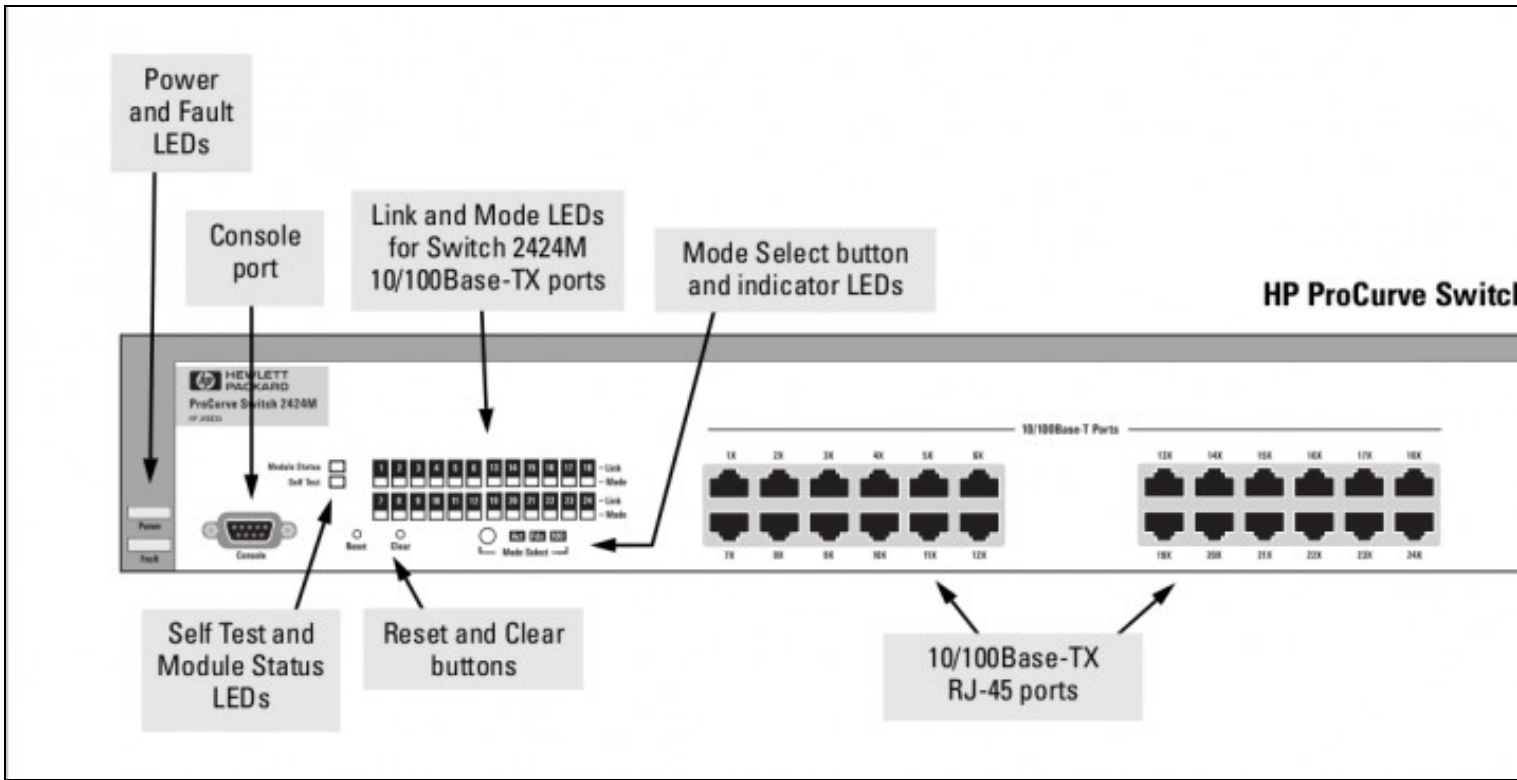
2.2 Ejemplos de conexión con Putty

2.2.1 Ejemplo 1. Conexión a través do Porto Serie COM1. Configuración Switch HPPROCURVE 2424M

NOTAS:

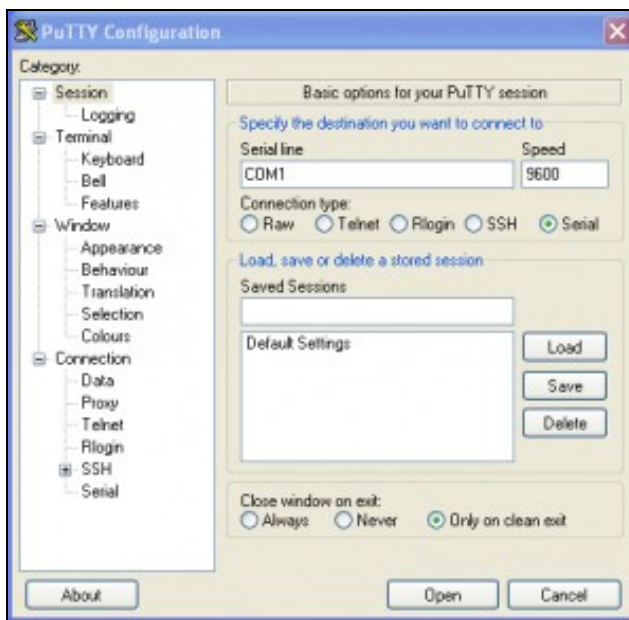
1. Picar nas imaxes para velas no tamaño orixinal
2. Para establecer a conexión necesítase un cable serie entre o Host que lanza Putty e o Switch a configurar.
3. Manuais HPPROCURVE SWITCH 2424M:
 - ◆ [Installation Guide](#)
 - ◆ [Management e Configuration Switch](#)
4. Quizás che interese o programa [minicom](#) para establecer a conexión serie mediante liña de comandos nun terminal Linux

2.2.1.1 Imaxe Panel_Frontal Switch HPProcurve 2424M



2.2.1.2 Establecer a conexión Serie co Switch

1. Pulsar **Reset Button** (ver imaxe), para recuperar a configuración inicial do Switch.
2. Pulsar **Clear Button** (ver imaxe), durante ao menos 1 segundo para resetear calquera password que puideramos ter configurada para unha conexión serie.
3. Configurar **putty** para establecer a conexión en serie co Switch:



a. Activar opción Serial



b. Parámetros conexión Serial.

Deixamos a configuración por defecto e picamos en **Open** para establecer a conexión.

4. Establecendo a conexión co Switch. Proceder:


```
COM1 - PuTTY
ROM information:
  Build directory: /sw/rom/build/vgrrrom(w99)
  Build date:      Nov 11 1998
  Build time:      09:16:37
  Build version:   C.06.01
  Build number:    2296

OS identifier found at @ 0xe00c0000
Verifying Image validity ...
CRC on OS image header Passed
CRC on complete OS image file Passed
Valid OS image @ 0xe00c0000

Decompressing...done.

initializing....initialization done.

Waiting for Speed Sense.  Press <Enter> twice to continue.
```

a. Inicializando conexión....

Pulsar 2 veces **Enter** para continuar.

```
COM1 - PuTTY
HP J4093A ProCurve Switch 2424M
Firmware revision C.09.22

Copyright (C) 1991-2002 Hewlett-Packard Co.  All Rights Reserved.

RESTRICTED RIGHTS LEGEND

Use, duplication, or disclosure by the Government is prohibited
as set forth in subdivision (b) (3) (ii) of the Rights in
Computer Software clause at 52.227-7013.

HEWLETT-PACKARD COMPANY, 3000 Hanover St., Palo Alto, CA 94304

Press any key to continue
```

b. Pulsar cualquiera tecla para continuar.

```
COM1 - PuTTY
HP ProCurve Switch 2424M      DEFAULT_CONFIG      1-Jan-1990  0:02:07
----- CONSOLE - MANAGER MODE -----
Main Menu

1. Status and Counters...
2. Switch Management Access Configuration (IP, SNMP, Console)...
3. Switch Configuration...
4. Event Log
5. Diagnostics...
6. Reboot Switch
7. Download OS
8. Stacking...
0. Logout

Provides the menu to display configuration, status, and counters.
To select menu item, press item number, or highlight item and press <Enter>.
```

c. Menú configuración Switch.

```
COM1 - PuTTY
HP ProCurve Switch 2424M      DEFAULT_CONFIG      1-Jan-1990  0:02:07
----- CONSOLE - MANAGER MODE -----
Main Menu

1. Status and Counters...
2. Switch Management Access Configuration (IP, SNMP, Console)...
3. Switch Configuration...
4. Event Log
5. Diagnostics...
6. Reboot Switch
7. Download OS
8. Stacking...
0. Logout

Displays menu to configure access for network management.
To select menu item, press item number, or highlight item and press <Enter>.
```

d. Elixir a Opción 2. Switch Management Access Configuration.

```
COM1 - PuTTY
HP ProCurve Switch 2424M      DEFAULT_CONFIG      1-Jan-1990  0:02:48
----- CONSOLE - MANAGER MODE -----
Switch Management Access Configuration Menu

1. IP Configuration
2. SNMP Community Names/Authorized Managers
3. Trap Receivers
4. Console/Serial Link Configuration
5. Console Passwords...
6. IP Authorized Managers
7. Authentication Services
0. Return to Main Menu...

Configures IP service for switch management.
To select menu item, press item number, or highlight item and press <Enter>.
```

e. Elixir Opción 1. IP Configuration.

```
COM1 - PuTTY
HP ProCurve Switch 2424M      DEFAULT_CONFIG      1-Jan-1990  0:02:48
----- CONSOLE - MANAGER MODE -----
Switch Management Access Configuration - IP Configuration

Time Sync. mode [None] : None

IP Config [DHCP/Bootp] : DHCP/Bootp
IP Address :
Subnet Mask :
Gateway :

Actions->  Cancel  Edit  Save  Help

Edit the fields displayed above.
Use arrow keys to change action selection and <Enter> to execute.
```

f. Moverse á Edit.

NOTA: Para moverse emplegar as teclas frechas e para ex...
tecla Enter.

```
COMI - PuTTY
HP ProCurve Switch 2424M      DEFAULT_CONFIG      1-Jan-1990  0:03:39
----- CONSOLE - MANAGER MODE -----
Switch Management Access Configuration - Internet (IP) Service

Time Sync. mode [None] : None

IP Config [DHCP/Bootp] : Manual
IP Address :
Subnet Mask :
Gateway :

Actions->  Cancell  Edit   Save   Help

Select the method to enable IP access for switch management.
Use arrow keys to change field selection, <Space> to toggle field choices,
and <Enter> to go to Actions.
```

g. Elixir a configuración IP Manual

```
COMI - PuTTY
HP ProCurve Switch 2424M      DEFAULT_CONFIG      1-Jan-1990  0:03:39
----- CONSOLE - MANAGER MODE -----
Switch Management Access Configuration - Internet (IP) Service

Time Sync. mode [None] : None

IP Config [DHCP/Bootp] : Manual
IP Address : 10.254.0.3
Subnet Mask :
Gateway :

Actions->  Cancell  Edit   Save   Help

Enter the IP address of the switch (or VLAN IP interface)
Use arrow keys to change field selection, <Space> to toggle field choices,
and <Enter> to go to Actions.
```

h. IP: 10.254.0.3.

```
COMI - PuTTY
HP ProCurve Switch 2424M      DEFAULT_CONFIG      1-Jan-1990  0:06:53
----- CONSOLE - MANAGER MODE -----
Switch Management Access Configuration - Internet (IP) Service

Time Sync. mode [None] : None

IP Config [DHCP/Bootp] : Manual
IP Address : 10.254.0.3
Subnet Mask : 255.0.0.0
Gateway :

Actions->  Cancell  Edit   Save   Help

Enter the subnet mask for the IP network.
Use arrow keys to change field selection, <Space> to toggle field choices,
and <Enter> to go to Actions.
```

i. Máscara de Subrede: 255.0.0.0.

```
COMI - PuTTY
HP ProCurve Switch 2424M      DEFAULT_CONFIG      1-Jan-1990  0:06:53
----- CONSOLE - MANAGER MODE -----
Switch Management Access Configuration - Internet (IP) Service

Time Sync. mode [None] : None

IP Config [DHCP/Bootp] : Manual
IP Address : 10.254.0.3
Subnet Mask : 255.0.0.0
Gateway : 10.0.0.1

Actions->  Cancell  Edit   Save   Help

Enter the IP address of the default gateway.
Use arrow keys to change field selection, <Space> to toggle field choices,
and <Enter> to go to Actions.
```

k. Porta de Enlace: 10.0.0.1.

```

COM1 - PuTTY
HP ProCurve Switch 2424M      DEFAULT_CONFIG      1-Jan-1990  0:07:50
----- CONSOLE - MANAGER MODE -----
Switch Management Access Configuration - Internet (IP) Service

Time Sync. mode [None] : None

IP Config [DHCP/Bootp] : Manual
IP Address : 10.254.0.3
Subnet Mask : 255.0.0.0
Gateway : 10.0.0.1

Actions->  Cancell  Edit  Save  Help

Save changes and return to previous screen.
Use arrow keys to change action selection and <Enter> to execute action.

```

l. Moverse a Save para guardar a configuración.

```

COM1 - PuTTY
HP ProCurve Switch 2424M      DEFAULT_CONFIG      1-Jan-1990  0:07:50
----- CONSOLE - MANAGER MODE -----
Switch Management Access Configurati

1. IP Configuration
2. SNMP Community Names/Authorized Managers
3. Trap Receivers
4. Console/Serial Link Configuration
5. Console Passwords...
6. IP Authorized Managers
7. Authentication Services
0. Return to Main Menu...

Returns to the console Main menu.
To select menu item, press item number, or highlight it

```

m. Escoller a Opción 0. Return to Main Menu... para volver

```

COM1 - PuTTY
HP ProCurve Switch 2424M      DEFAULT_CONFIG      1-Jan-1990  0:08:53
----- CONSOLE - MANAGER MODE -----
Main Menu

1. Status and Counters...
2. Switch Management Access Configuration (IP, SNMP, Console)...
3. Switch Configuration...
4. Event Log
5. Diagnostics...
6. Reboot Switch
7. Download OS
8. Stacking...
0. Logout

Terminates this console session.
To select menu item, press item number, or highlight item and press <Enter>.

```

n. Escoller a Opción 0. Logout para finalizar a conexión.

```

COM1 - PuTTY
HP ProCurve Switch 2424M      DEFAULT_CONFIG      1-Jan-1990  0:08:53
----- CONSOLE - MANAGER MODE -----
Main Menu

1. Status and Counters...
2. Switch Management Access Configuration (IP, SNMP, Console)...
3. Switch Configuration...
4. Event Log
5. Diagnostics...
6. Reboot Switch
7. Download OS
8. Stacking...
0. Logout

To select menu item, press item number, or highlight it
Do you want to disconnect? [Y/N]

```

ñ. Para finalizara a conexión pulsar a tecla Y.

5. Agora xa podemos acceder á configuración do Switch mediante un navegador web.

2.2.2 Exemplo 2. Configuracións de putty para establecer unha conexión SSH

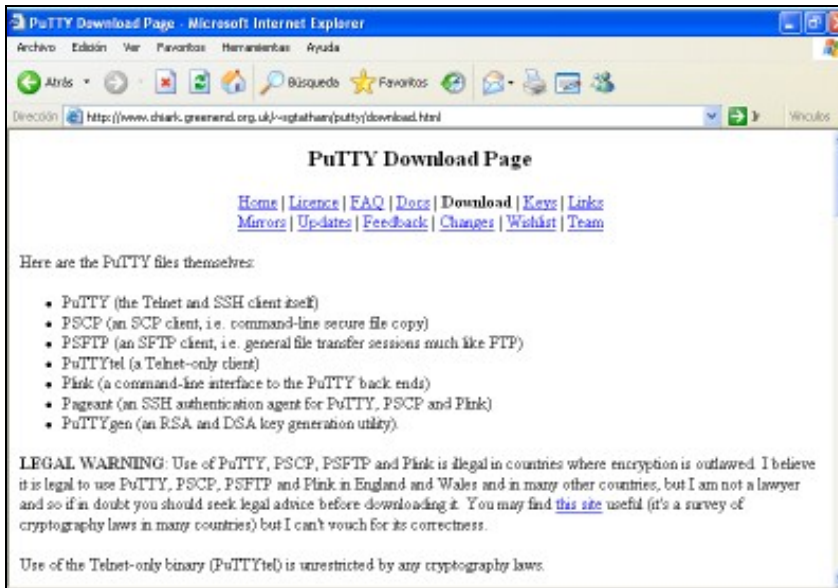
Picar na ligazón [Configuracións de putty para establecer unha conexión SSH](#)

3 Comandos putty

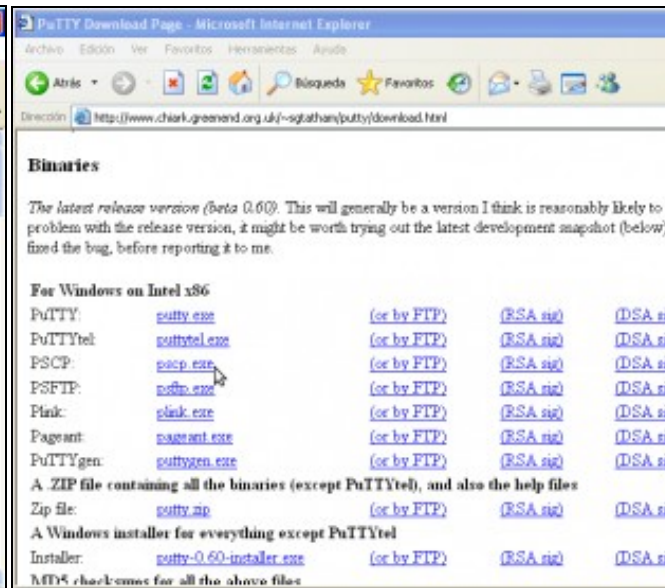
3.1 Comando pscp para copias mediante conexións cifradas SSH

3.1.1 Descargar pscp para Windows Intel x86 dende a ligazón

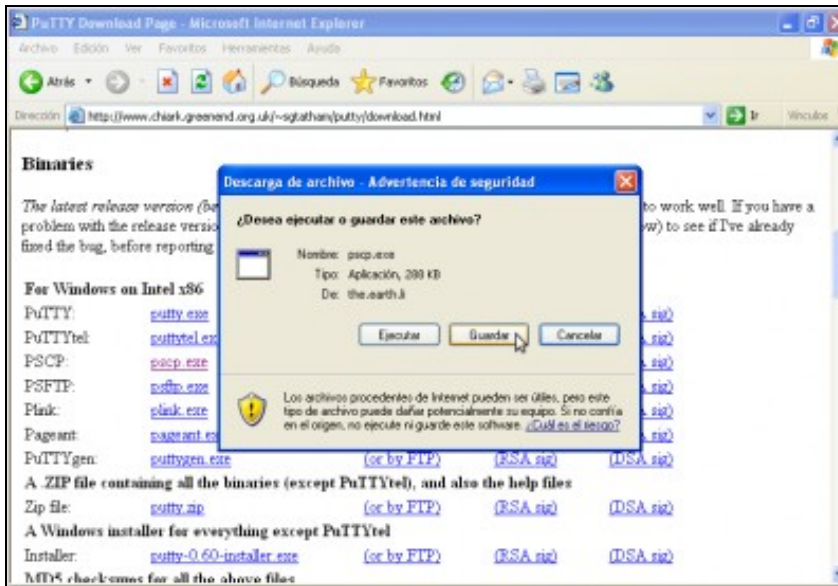
<http://www.chiark.greenend.org.uk/~sgtatham/putty/download.html>



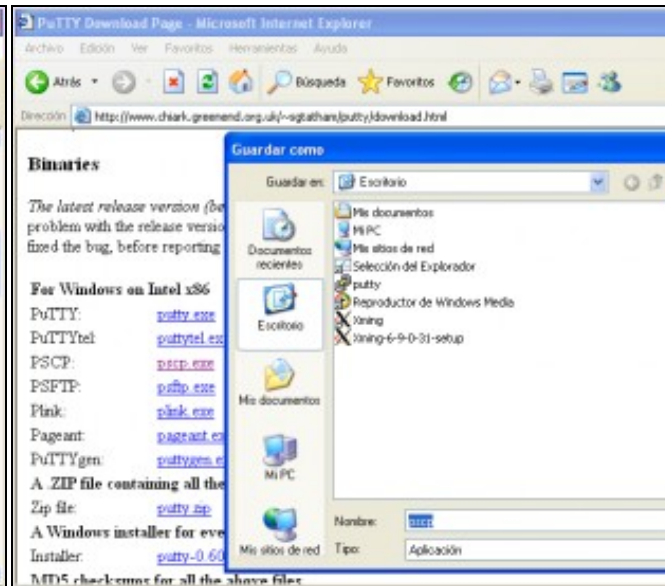
a. URL putty



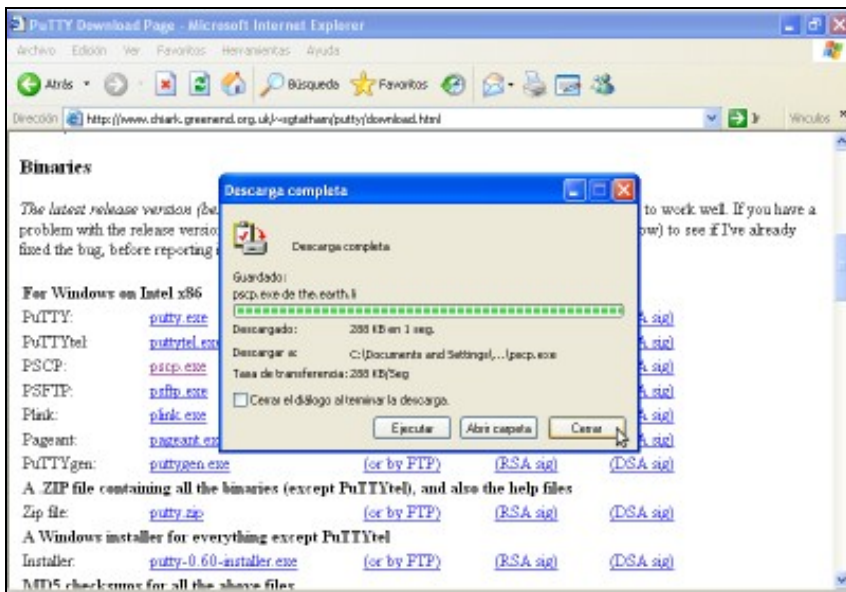
b. Descarga para Windows Intel x86



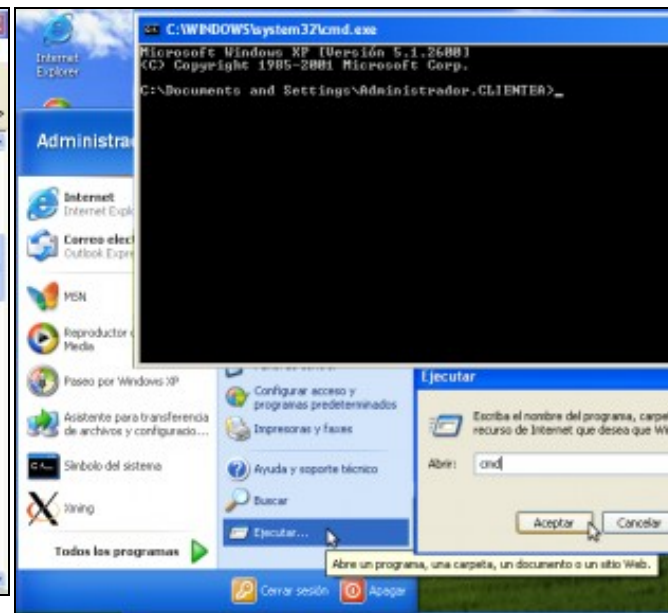
c. Elixir guardar descarga



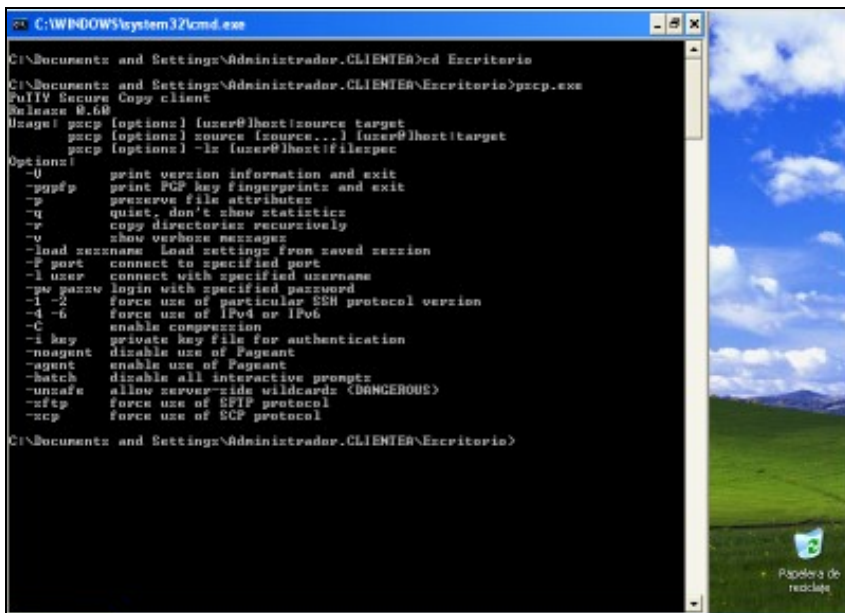
d. Descargar no Escritorio



e. Descargando... Descarga completa. Pechar



f. Lanzar consola de comandos cmd (Inicio-->Ejecutar-->cmd).



e. Comando pscp.

Acceder ao cartafol Escritorio mediante o comando `cd Escritorio`.

Executar o comando `pscp.exe` para ver a súa sintaxe.

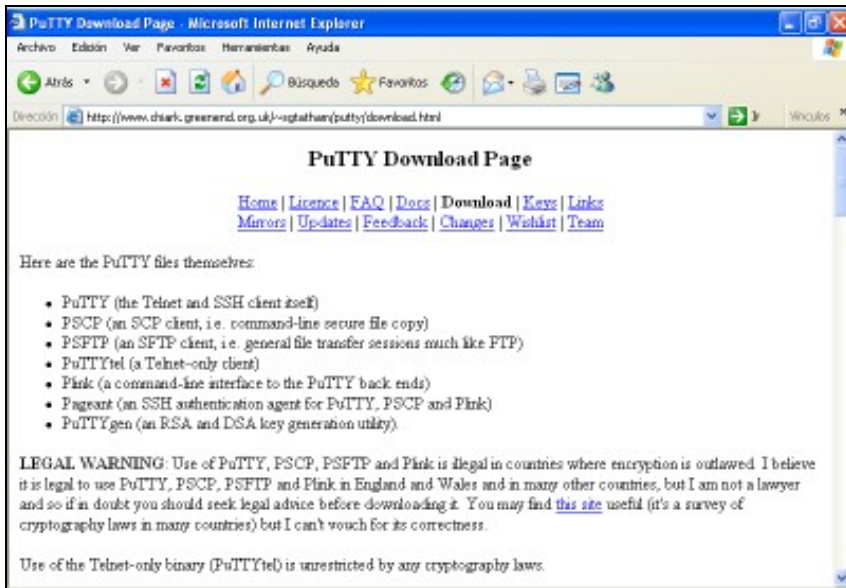
3.1.2 Exemplo pscp

Picar na ligazón: [Empregando o comando pscp](#)

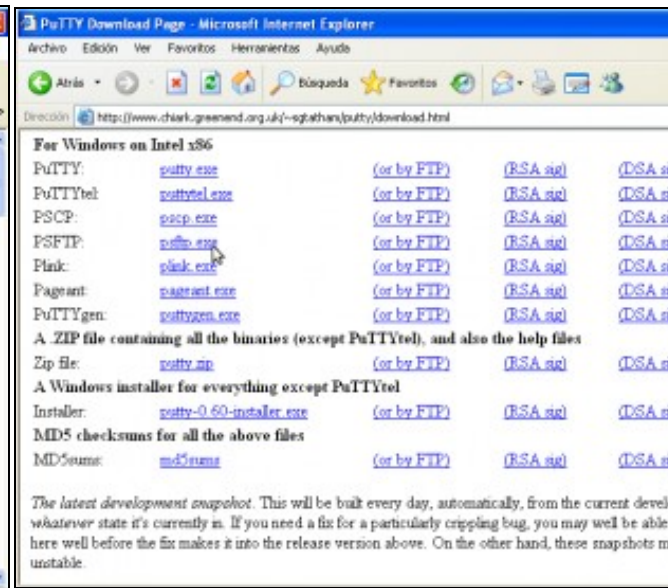
3.2 Comando psftp para transferencia de arquivos mediante conexións cifradas SSH

3.2.1 Descargar psftp para Windows Intel x86 dende a ligazón

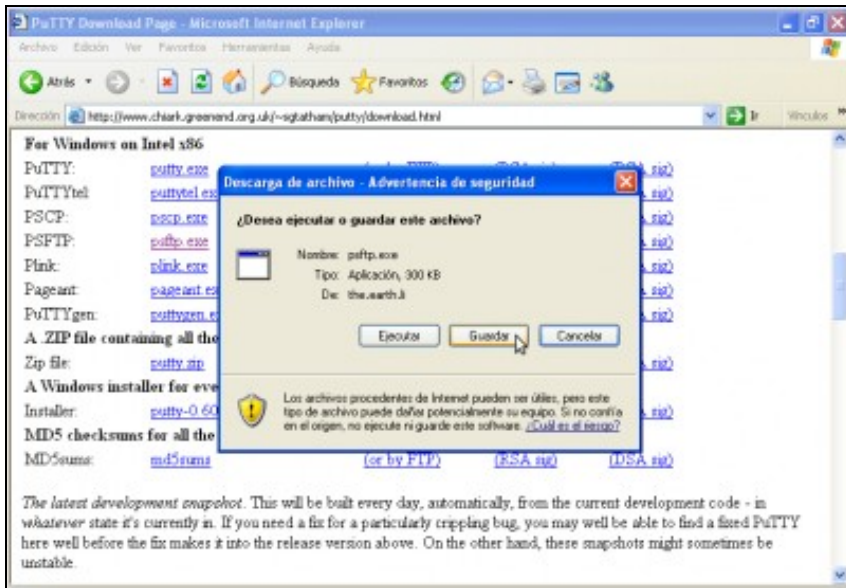
<http://www.chiark.greenend.org.uk/~sgtatham/putty/download.html>



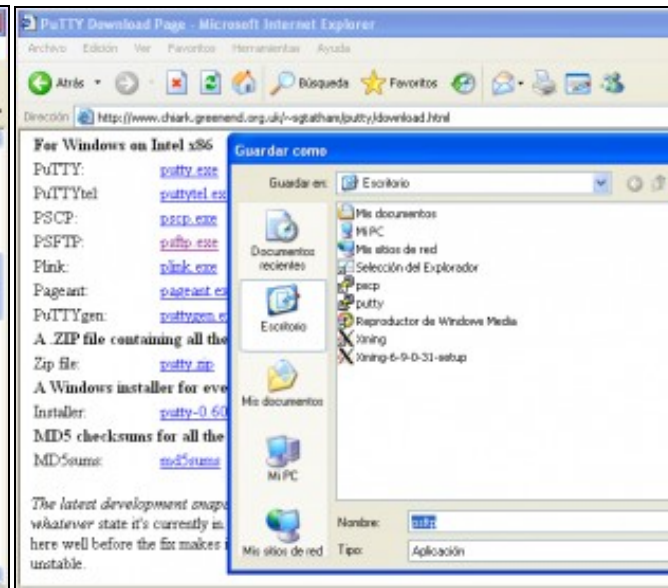
a. URL putty



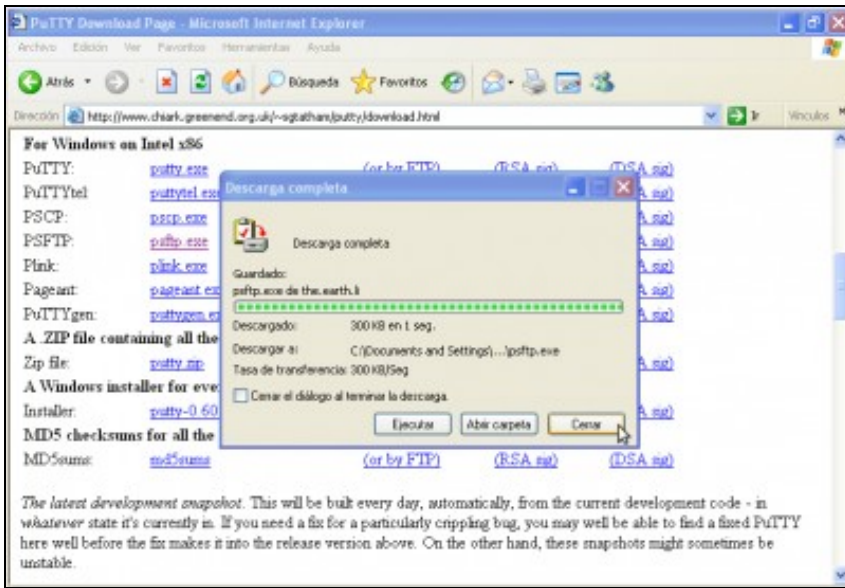
b. Descarga para Windows Intel x86



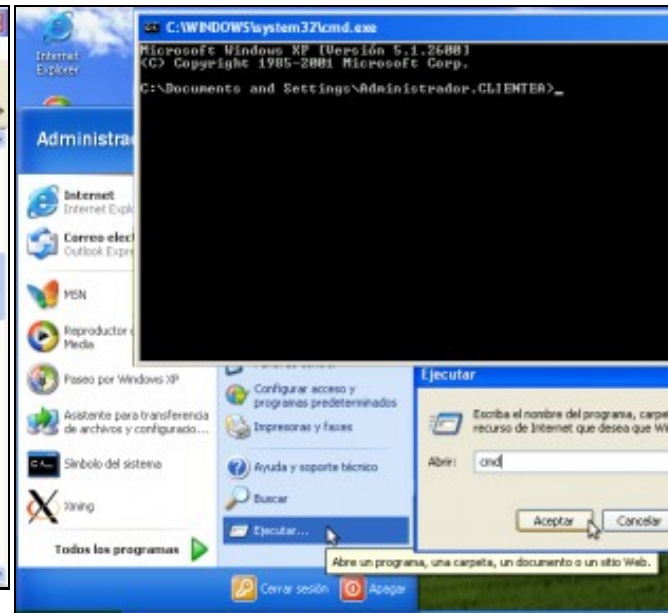
c. Elixir guardar descarga



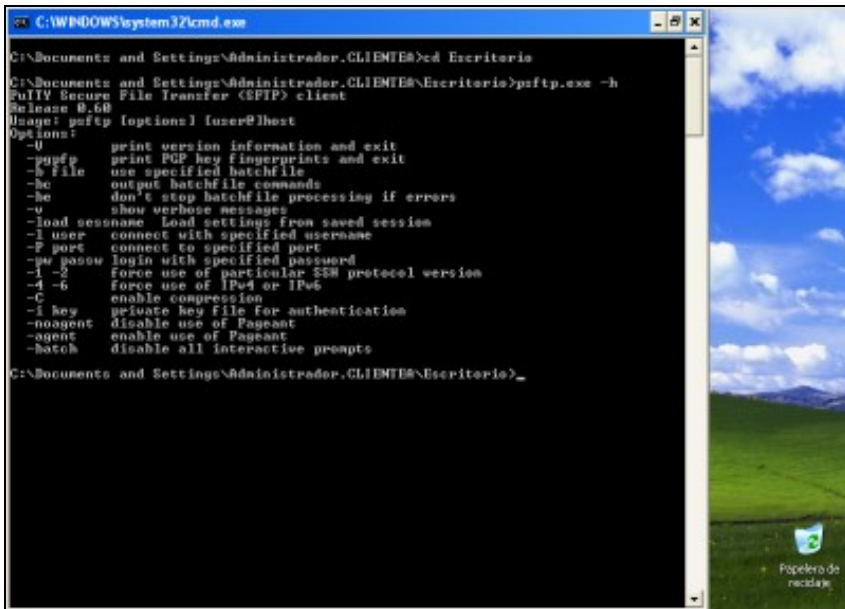
d. Descargar no Escritorio



e. Descargando... Descarga completa. Pechar



f. Lanzar consola de comandos cmd (Inicio-->Ejecutar-->cmd).



e. Comando psftp.

Acceder ao cartafol Escritorio mediante o comando **cd Escritorio**.

Executar o comando **psftp.exe -h** para ver a súa sintaxe.

3.2.2 Exemplo psftp

Picar na ligazón: [Empregando o comando psftp](#)

--ricardofc [29/04/10]