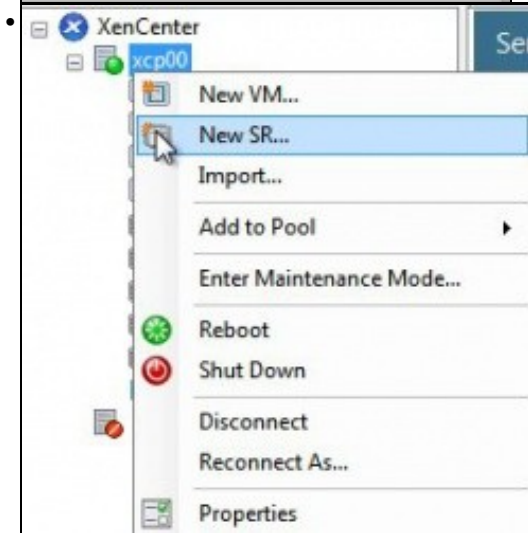
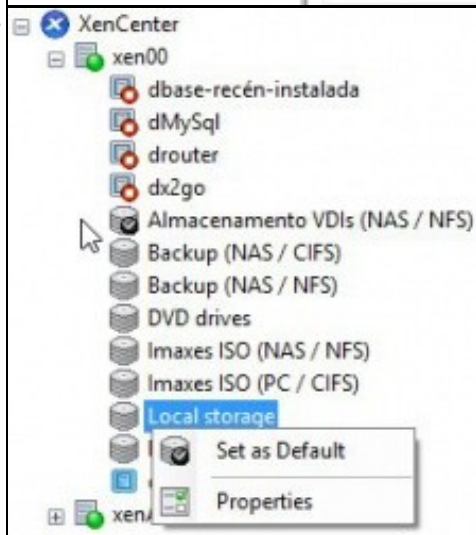
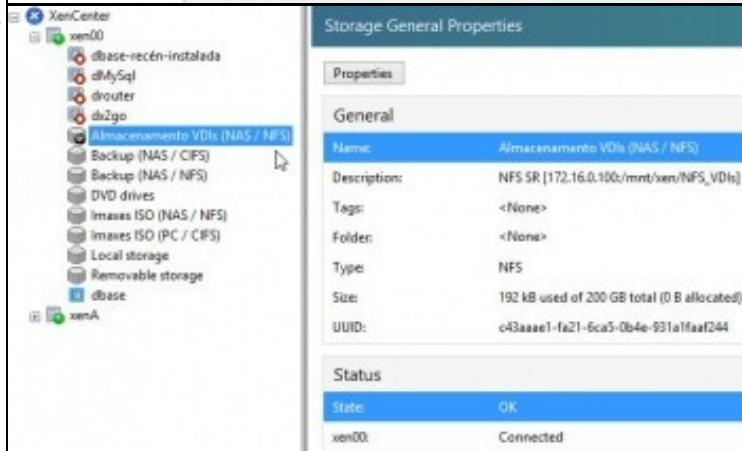
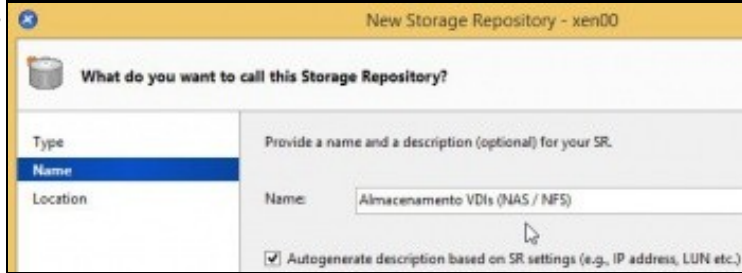
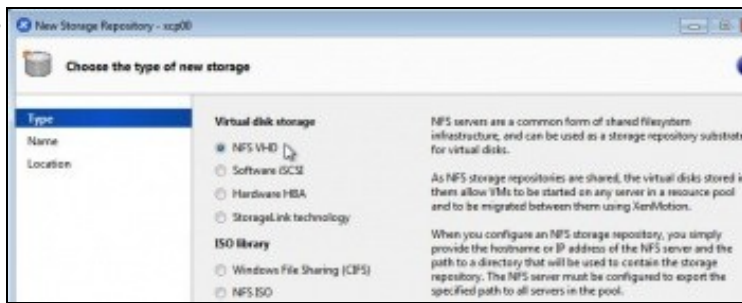
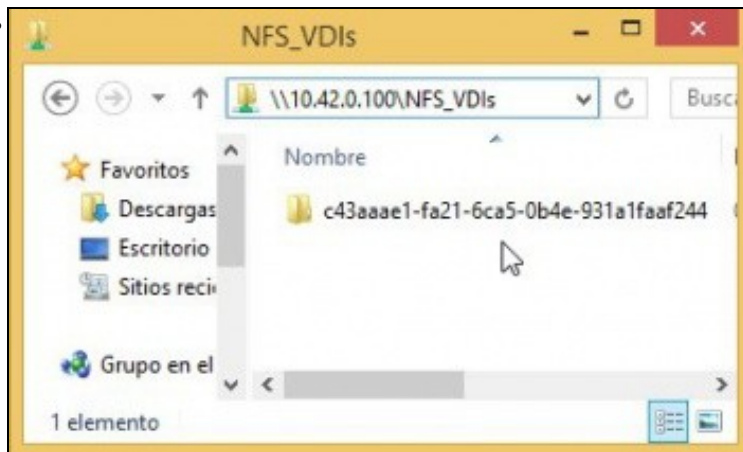


# 1 XenServer

• ???????????????





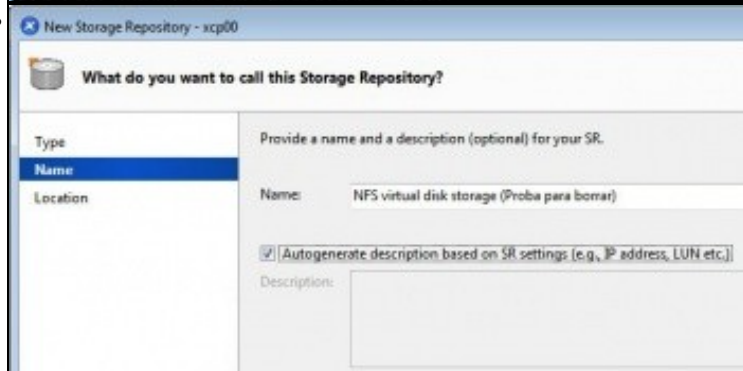


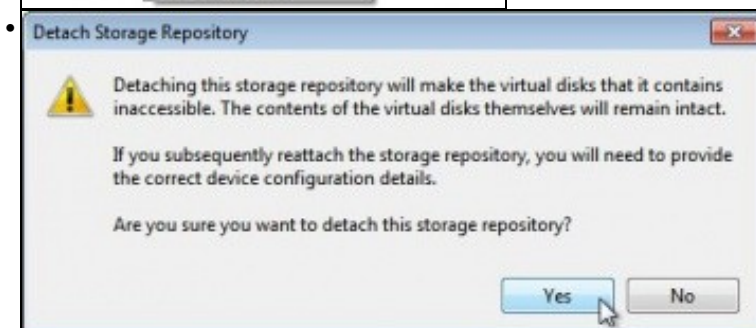
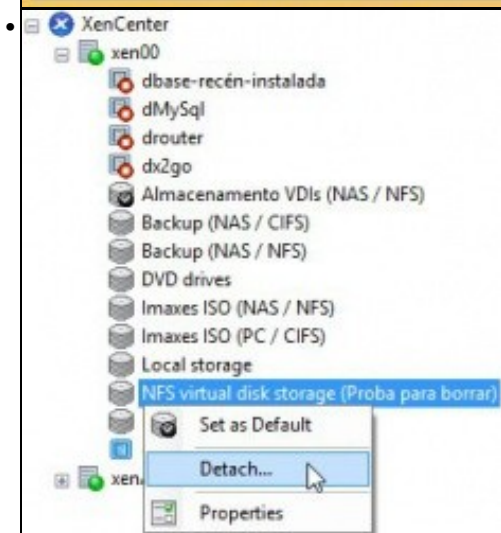
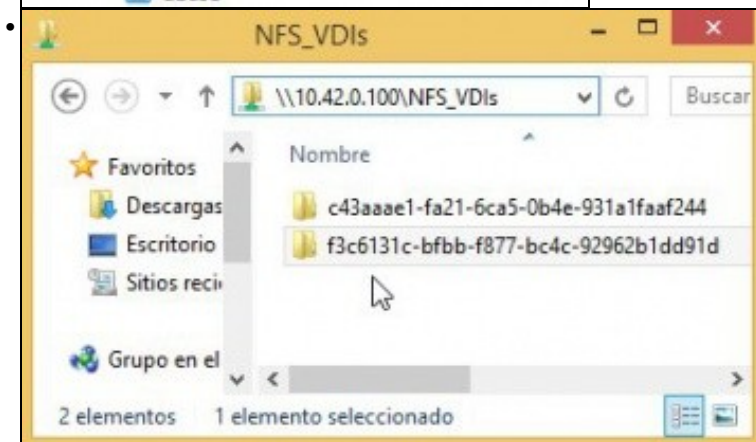
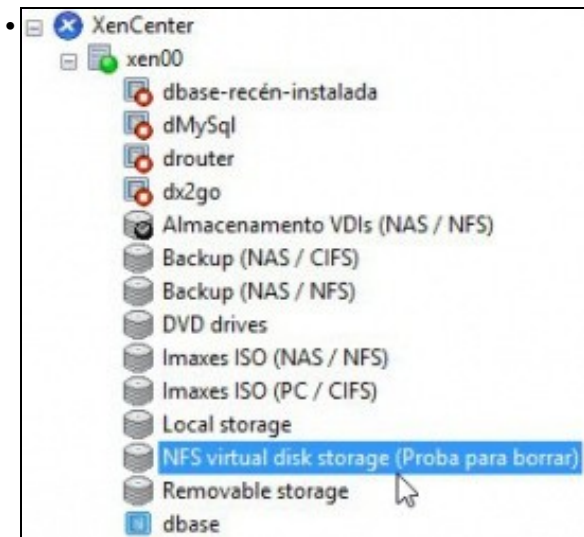
```

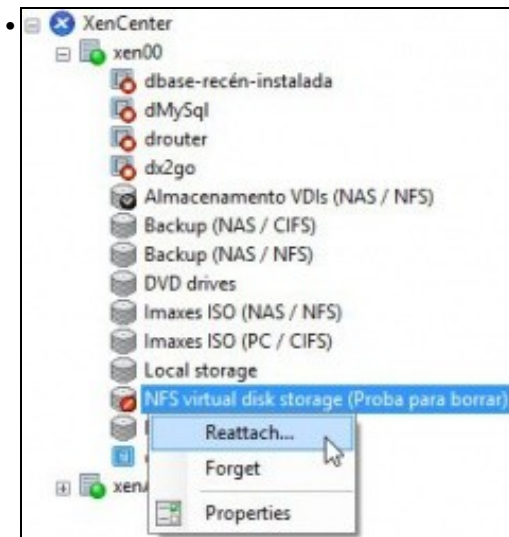
[root@xen00 ~]# xe sr-list
allowed-operations=          PBDs=
allowed-operations:contains= PBDs:contains=
blobs=                       physical-size=
content-type=                physical-utilisation=
current-operations=         shared=
current-operations:contains= sm-config=
database:                   tags=
host=                       tags:contains=
introduced-by=              type=
local-cache-enabled=        uuid=
name-description=           VDIs=
name-label=                 VDIs:contains=
other-config=               virtual-allocation=
params=

[root@xen00 ~]# xe sr-list name-label
Almacenamiento VDIs \ (NAS \ ^ NFS \) Inaxes \ ISO \ (PC \ ^ CIFS \)
Backup \ (NAS \ ^ CIFS \) Local \ storage
Backup \ (NAS \ ^ NFS \) Renewable \ storage
DUD \ drives XenServer \ Tools
Inaxes \ ISO \ (NAS \ ^ NFS \)
[root@xen00 ~]# xe sr-list name-label=

```







Provide the name of the share where your SR is located, optionally specifying advanced options. Indicate whether you wish to create a new SR or reattach an existing SR before proceeding.

Share Name:  Scan

Example: server/path

Advanced Options:

Create a new SR

Reattach an existing SR:

SR Almacenamiento VDIs (NAS / NFS) on xen00

SR NFS virtual disk storage (Proba para borrar) on xen00 (Detached)

### Red

Adaptador 1 | Adaptador 2 | Adaptador 3 | Adaptador 4

Habilitar adaptador de red

Conectado a: Red interna

Nombre: intnet

Avanzadas

Tipo de adaptador: Intel PRO/1000 MT Desktop (82540EM)

Modo promiscuo: Denegar

Dirección MAC: 080027F33CF5

Cable conectado

Reenvío de puertos

```

Local Command Shell
INIT: Sending processes the TERM signal <Enter> Fingerprints <PS> Refresh
Shutting down Virtual Machines:
Requesting evacuation of host
Terminating remaining Virtual Machines:
Stopping atd:
Stopping perfmon:
Stopping sshd:
Stopping crond:
Unmounting NFS filesystems: umount.nfs: 172.16.0.100:/mnt/xen/NFS_SR/bdd8edbc-528b-7886-47ba-d812f2581724: not found / mounted or server not reachable
umount.nfs: 172.16.0.100:/mnt/xen/NFS_SR/bdd8edbc-528b-7886-47ba-d812f2581724: n
ot found / mounted or server not reachable
umount.nfs: 172.16.0.100:/mnt/xen/NFS_SR/b9cc9821-687c-c896-7c57-7e6baa159dfc: n
ot found / mounted or server not reachable
umount.nfs: 172.16.0.100:/mnt/xen/NFS_SR/b9cc9821-687c-c896-7c57-7e6baa159dfc: n
ot found / mounted or server not reachable
umount.nfs: 172.16.0.100:/mnt/xen/ISOs: not found / mounted or server not reacha
ble
umount.nfs: 172.16.0.100:/mnt/xen/ISOs: not found / mounted or server not reacha
ble
[FAILED]
Cannot stat /var/run/rm-mount/bdd8edbc-528b-7886-47ba-d812f2581724: Input/output
error

```

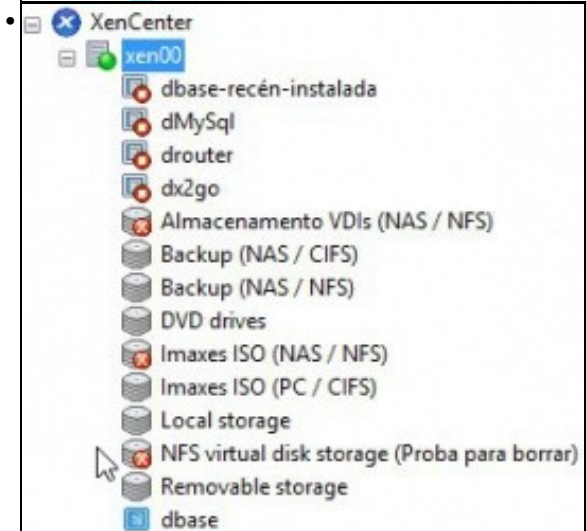
```

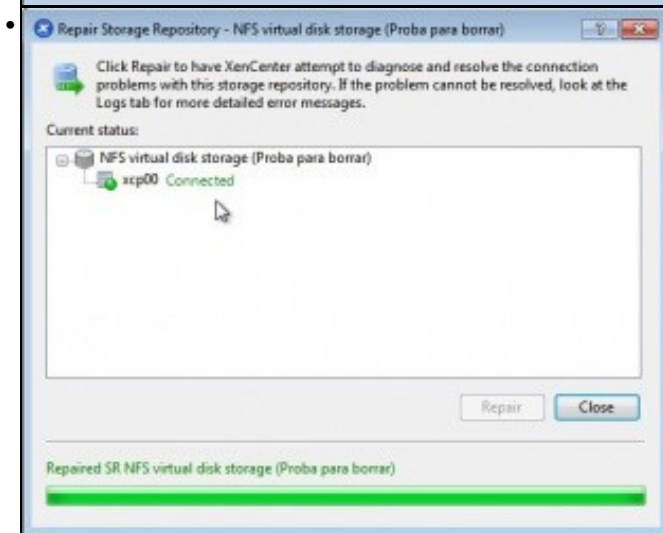
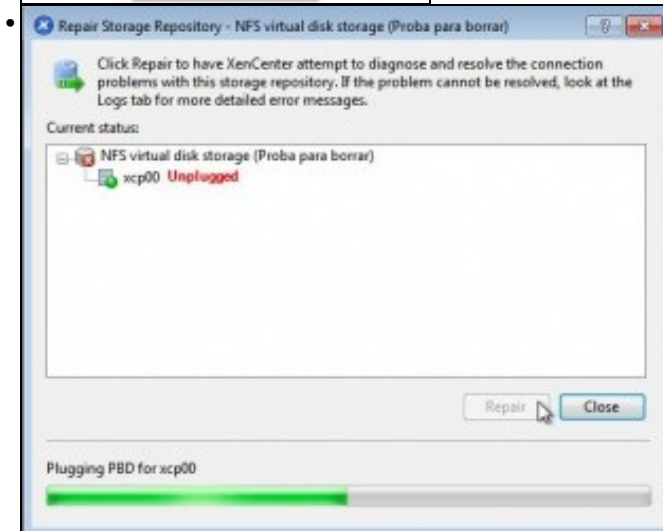
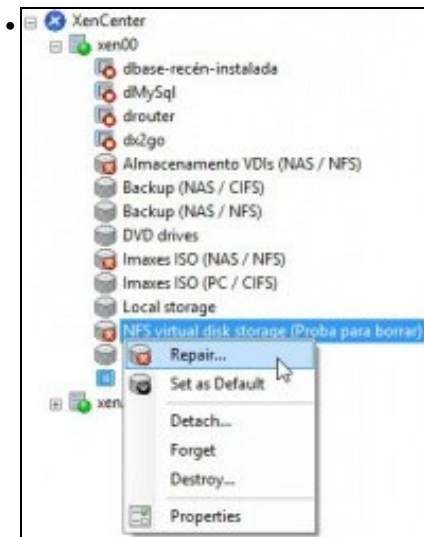
Shutting down Virtual Machines: [ OK ]
Requesting evacuation of host
Terminating remaining Virtual Machines: [ OK ]
Stopping atd: [ OK ]
Stopping perfmon: [ OK ]
Stopping sshd: [ OK ]
Stopping cron: [ OK ]
Unmounting NFS filesystems: umount.nfs: 172.16.8.188:/mnt/xen/NFS_SR/bdd8edbc-528b-7886-47ba-d812f2581724: not found / mounted or server not reachable
umount.nfs: 172.16.8.188:/mnt/xen/NFS_SR/bdd8edbc-528b-7886-47ba-d812f2581724: not found / mounted or server not reachable
umount.nfs: 172.16.8.188:/mnt/xen/NFS_SR/b9cc9821-687c-c896-7c57-7e6baa159d6c: not found / mounted or server not reachable
umount.nfs: 172.16.8.188:/mnt/xen/NFS_SR/b9cc9821-687c-c896-7c57-7e6baa159d6c: not found / mounted or server not reachable
umount.nfs: 172.16.8.188:/mnt/xen/ISOs: not found / mounted or server not reachable
umount.nfs: 172.16.8.188:/mnt/xen/ISOs: not found / mounted or server not reachable
[FAILED]
Cannot stat /var/run/sr-mount/bdd8edbc-528b-7886-47ba-d812f2581724: Input/output error
Cannot stat /var/run/sr-mount/bdd8edbc-528b-7886-47ba-d812f2581724: Input/output error
Cannot stat /var/run/sr-mount/bdd8edbc-528b-7886-47ba-d812f2581724: Input/output error
Cannot stat /var/run/sr-mount/b9cc9821-687c-c896-7c57-7e6baa159d6c: Input/output error

Terminating remaining Virtual Machines: [ OK ]
Stopping atd: [ OK ]
Stopping perfmon: [ OK ]
Stopping sshd: [ OK ]
Stopping cron: [ OK ]
Unmounting NFS filesystems: umount.nfs: 172.16.8.188:/mnt/xen/NFS_SR/bdd8edbc-528b-7886-47ba-d812f2581724: not found / mounted or server not reachable
umount.nfs: 172.16.8.188:/mnt/xen/NFS_SR/bdd8edbc-528b-7886-47ba-d812f2581724: not found / mounted or server not reachable
umount.nfs: 172.16.8.188:/mnt/xen/NFS_SR/b9cc9821-687c-c896-7c57-7e6baa159d6c: not found / mounted or server not reachable
umount.nfs: 172.16.8.188:/mnt/xen/NFS_SR/b9cc9821-687c-c896-7c57-7e6baa159d6c: not found / mounted or server not reachable
umount.nfs: 172.16.8.188:/mnt/xen/NFS_SR/b9cc9821-687c-c896-7c57-7e6baa159d6c: not found / mounted or server not reachable
umount.nfs: 172.16.8.188:/mnt/xen/ISOs: not found / mounted or server not reachable
umount.nfs: 172.16.8.188:/mnt/xen/ISOs: not found / mounted or server not reachable
[FAILED]
Cannot stat /var/run/sr-mount/bdd8edbc-528b-7886-47ba-d812f2581724: Input/output error
Cannot stat /var/run/sr-mount/bdd8edbc-528b-7886-47ba-d812f2581724: Input/output error
Cannot stat /var/run/sr-mount/bdd8edbc-528b-7886-47ba-d812f2581724: Input/output error
Cannot stat /var/run/sr-mount/b9cc9821-687c-c896-7c57-7e6baa159d6c: Input/output error
Cannot stat /var/run/sr-mount/b9cc9821-687c-c896-7c57-7e6baa159d6c: Input/output error

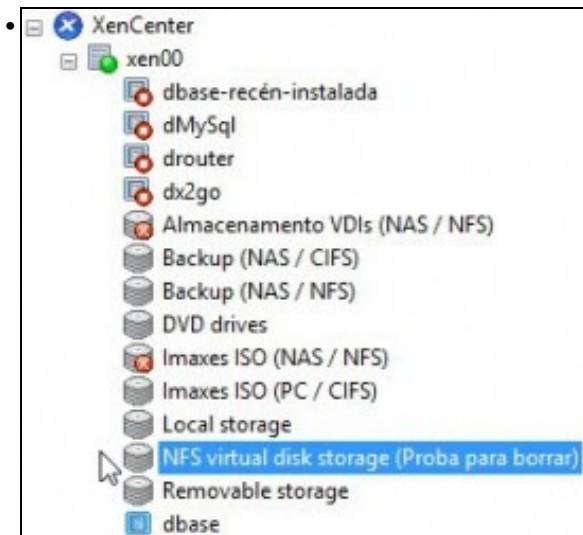
-bfbb-f877-bc4c-92962b1dd91d: not found / mounted or server not reachable
umount.nfs: 172.16.8.188:/mnt/xen/NFS_UDIs/f3c6131c-bfbb-f877-bc4c-92962b1dd91d: not found / mounted or server not reachable
umount.nfs: 172.16.8.188:/mnt/xen/NFS_UDIs/c43aaae1-fa21-6ca5-8b4e-931a1faaf244: not found / mounted or server not reachable
umount.nfs: 172.16.8.188:/mnt/xen/NFS_UDIs/c43aaae1-fa21-6ca5-8b4e-931a1faaf244: not found / mounted or server not reachable
umount.nfs: 172.16.8.188:/mnt/xen/ISOs: not found / mounted or server not reachable
umount.nfs: 172.16.8.188:/mnt/xen/ISOs: not found / mounted or server not reachable
[FAILED]
Cannot stat /var/run/sr-mount/f3c6131c-bfbb-f877-bc4c-92962b1dd91d: Input/output error
Cannot stat /var/run/sr-mount/f3c6131c-bfbb-f877-bc4c-92962b1dd91d: Input/output error
Cannot stat /var/run/sr-mount/f3c6131c-bfbb-f877-bc4c-92962b1dd91d: Input/output error
Cannot stat /var/run/sr-mount/c43aaae1-fa21-6ca5-8b4e-931a1faaf244: Input/output error
Cannot stat /var/run/sr-mount/c43aaae1-fa21-6ca5-8b4e-931a1faaf244: Input/output error
Cannot stat /var/run/sr-mount/c43aaae1-fa21-6ca5-8b4e-931a1faaf244: Input/output error
Cannot stat /var/run/sr-mount/a348675d-6d6b-84fc-fadd-82c5a48f7a83: Input/output error
Cannot stat /var/run/sr-mount/a348675d-6d6b-84fc-fadd-82c5a48f7a83: Input/output error

```









```
[root@xen00 ~]# xe sr-list name-label=Almacenamiento VDIs \ (NAS \ NFS)
uid ( RO) : c43aaae1-fa21-6ca5-0b4e-931a1faaf244
name-label ( RW): Almacenamiento VDIs (NAS / NFS)
name-description ( RW): NFS SR [172.16.0.100:/mnt/xen/NFS_VDIs]
host ( RO): xen00
type ( RO): nfs
content-type ( RO):
```



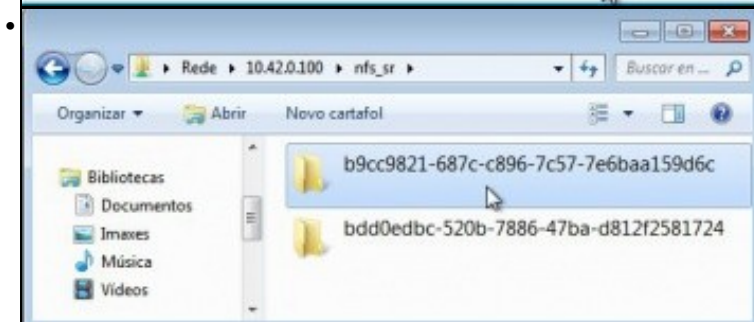
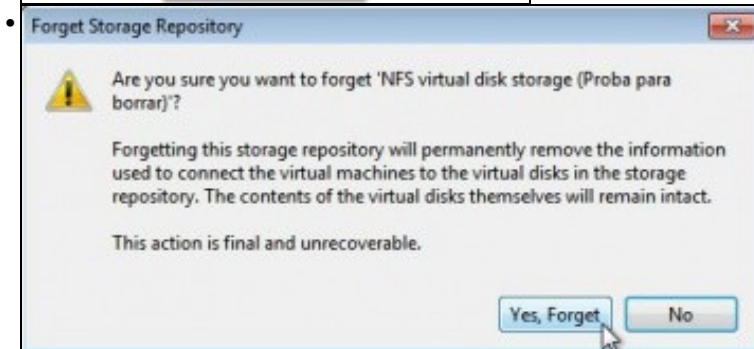
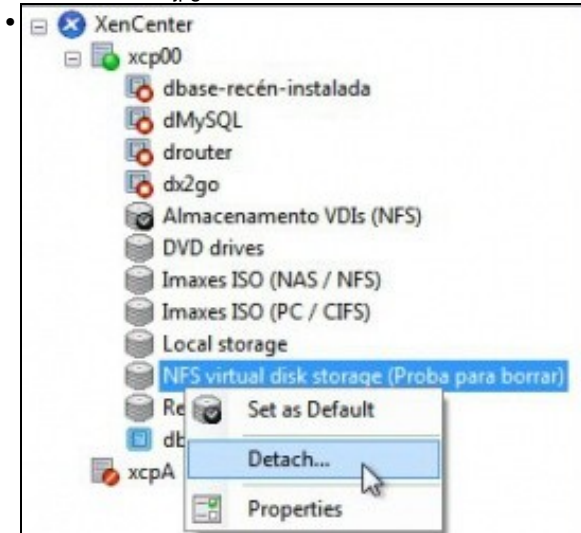
```
[root@xcp00 ~]# xe sr-list
uid ( RO) : b9cc9821-687c-c896-7c57-7e6baa159d6c
name-label ( RW): NFS virtual disk storage (Proba para borrar)
name-description ( RW): NFS SR [172.16.0.100:/mnt/xen/NFS_SR]
host ( RO): xcp00
type ( RO): nfs
content-type ( RO):
```

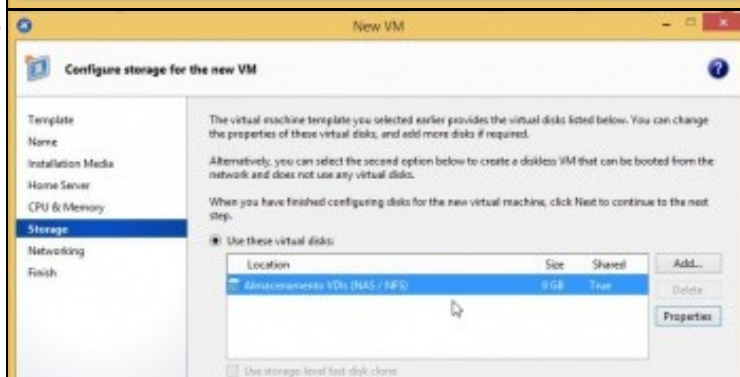
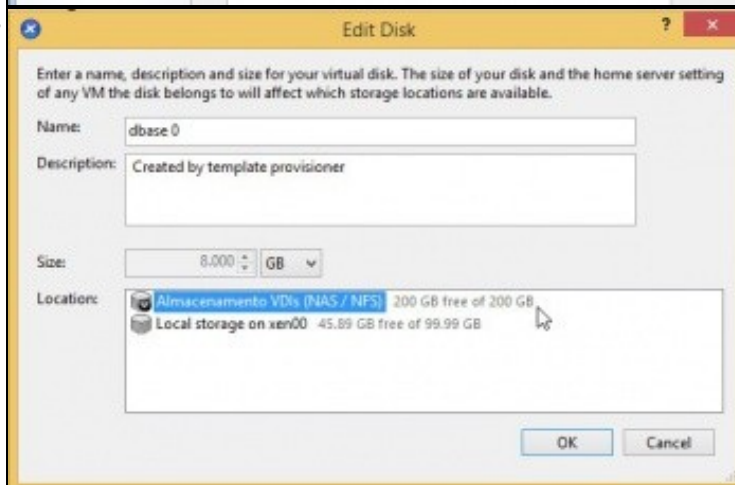
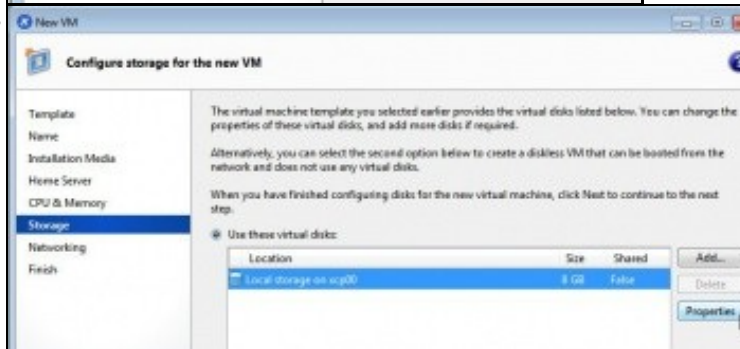
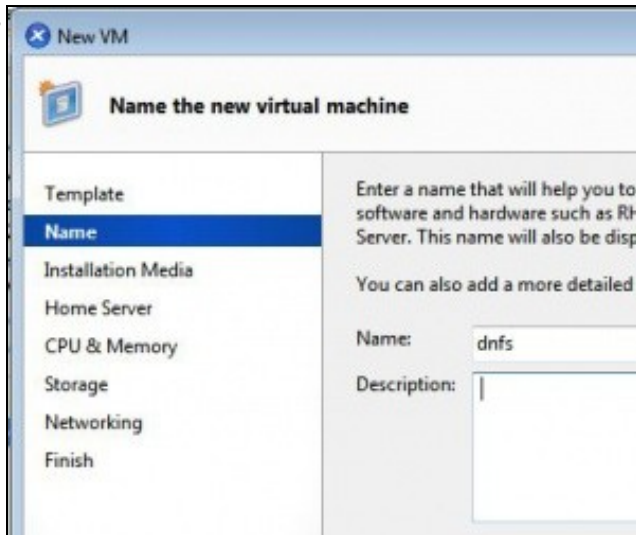
```
[root@xen00 ~]# mount | grep NFS
172.16.0.100:/mnt/xen/NFS_VDIs/c43aaae1-fa21-6ca5-0b4e-931a1faaf244 on /var/run/
sr-mount/c43aaae1-fa21-6ca5-0b4e-931a1faaf244 type nfs (rw,soft,timeo=133,retroa
s=2147483647,tcp,actimeo=0,addr=172.16.0.100)
172.16.0.100:/mnt/xen/NFS_VDIs/f3c6131c-bfbb-f877-bc4c-92962b1dd91d on /var/run/
sr-mount/f3c6131c-bfbb-f877-bc4c-92962b1dd91d type nfs (rw,soft,timeo=133,retroa
s=2147483647,tcp,actimeo=0,addr=172.16.0.100)
[root@xen00 ~]#
```

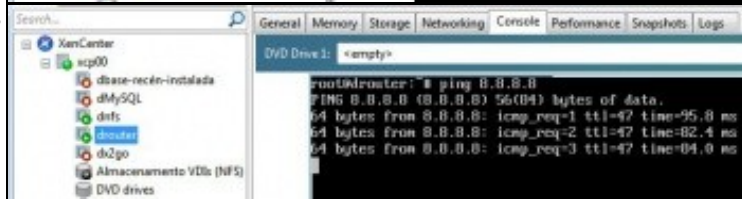
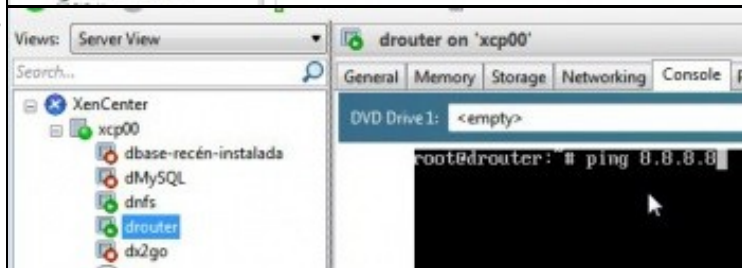
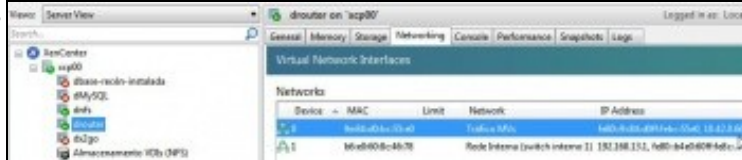
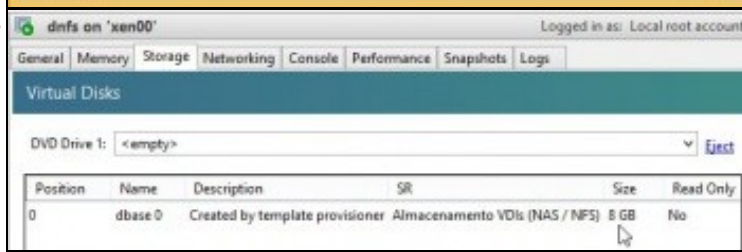
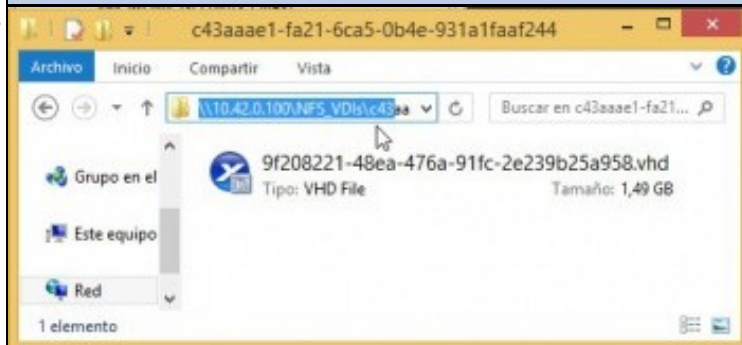
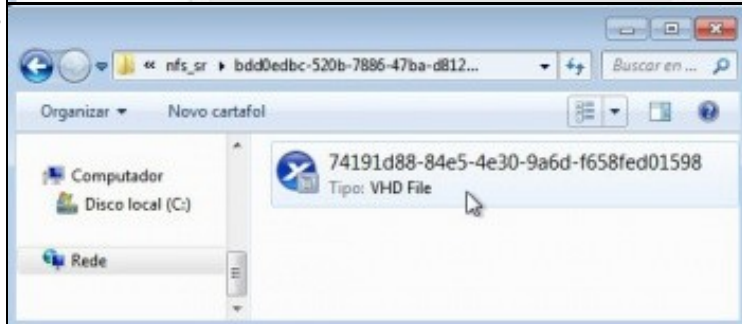
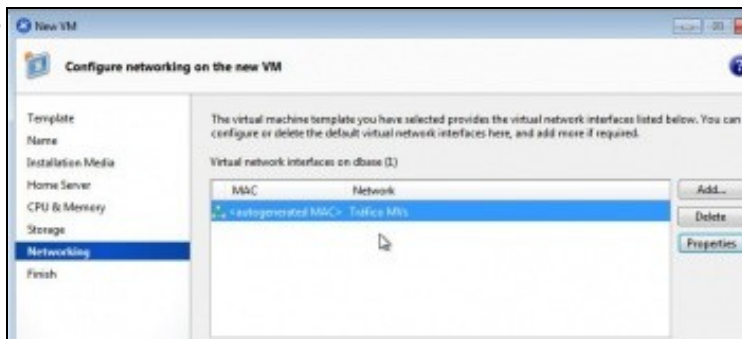
```
[root@xen00 ~]# xe sr-param-list uuid=c43aaae1-fa21-6ca5-0b4e-931a1faaf244
uid ( RO) : c43aaae1-fa21-6ca5-0b4e-931a1faaf244
name-label ( RW): Almacenamiento VDIs (NAS / NFS)
name-description ( RW): NFS SR [172.16.0.100:/mnt/xen/NFS_VDIs]
host ( RO): xen00
allowed-operations (SRO): forget; VDI.create; VDI.snapshot; PBD.create; P
D.destroy; plug; update; destroy; VDI.destroy; scan; VDI.clone; VDI.resize; unpl
ug
current-operations (SRO):
VDIs (SRO):
PBDs (SRO): ff22a695-9e53-7898-2697-2d830be12722
virtual-allocation ( RO): 0
physical-utilisation ( RO): 196608
physical-size ( RO): 214748364000
type ( RO): nfs
content-type ( RO):
shared ( RW): true
introduced-by ( RO): <not in database>
other-config (MRU): dirty;
sw-config (MRU):
blobs ( RO):
```

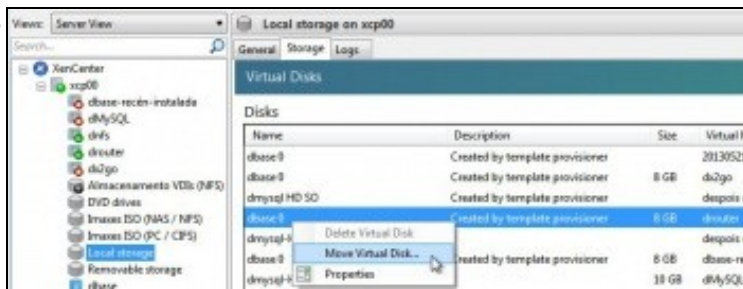
```
root@xen00 ~]# xe sr-list uuid=c43aae1-fa21-6ca5-0b4e-931a1faaf244 params=name-label,PBDs
name-label ( RW) : Almacenamiento VDIs (NAS / NFS)
PBDs (SR0) : ff22a695-9e53-7898-2697-2d830be17272
```

• Sv 2013 vds 35.jpg



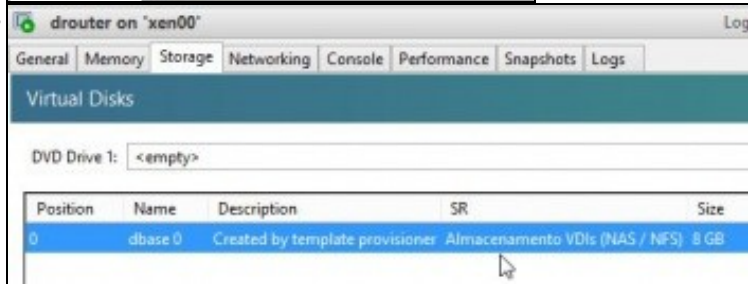
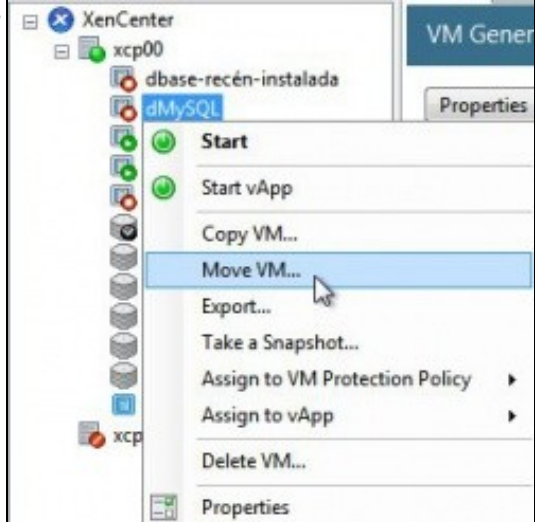
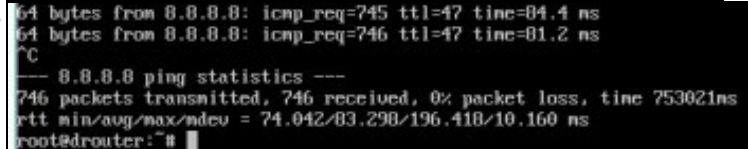
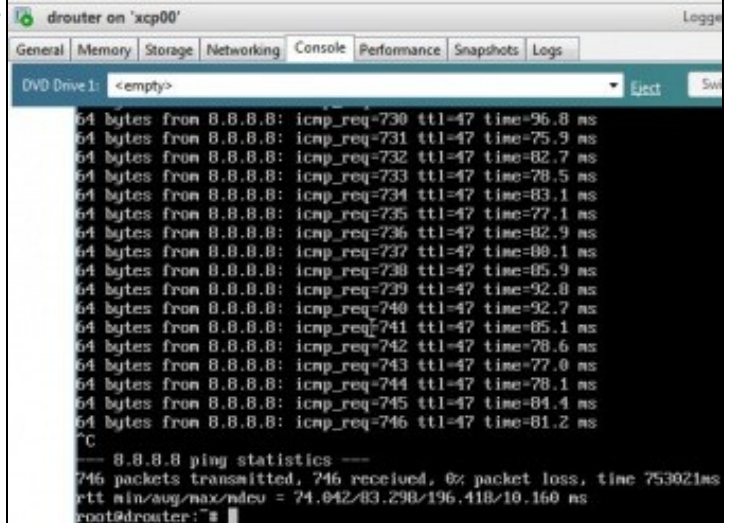
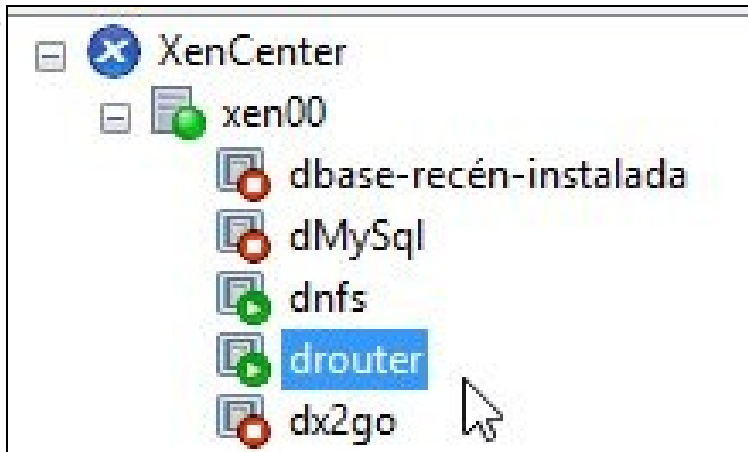






```

64 bytes from 8.8.8.8: icmp_req=193 ttl=47 time=79.1 ns
64 bytes from 8.8.8.8: icmp_req=194 ttl=47 time=77.4 ns
64 bytes from 8.8.8.8: icmp_req=195 ttl=47 time=78.8 ns
64 bytes from 8.8.8.8: icmp_req=196 ttl=47 time=88.4 ns
64 bytes from 8.8.8.8: icmp_req=197 ttl=47 time=88.0 ns
64 bytes from 8.8.8.8: icmp_req=198 ttl=47 time=84.7 ns
64 bytes from 8.8.8.8: icmp_req=199 ttl=47 time=80.5 ns
64 bytes from 8.8.8.8: icmp_req=200 ttl=47 time=75.5 ns
64 bytes from 8.8.8.8: icmp_req=201 ttl=47 time=78.2 ns
64 bytes from 8.8.8.8: icmp_req=202 ttl=47 time=92.6 ns
64 bytes from 8.8.8.8: icmp_req=203 ttl=47 time=89.5 ns
64 bytes from 8.8.8.8: icmp_req=204 ttl=47 time=76.0 ns
64 bytes from 8.8.8.8: icmp_req=205 ttl=47 time=84.5 ns
64 bytes from 8.8.8.8: icmp_req=206 ttl=47 time=89.4 ns
64 bytes from 8.8.8.8: icmp_req=207 ttl=47 time=90.0 ns
64 bytes from 8.8.8.8: icmp_req=208 ttl=47 time=81.2 ns
64 bytes from 8.8.8.8: icmp_req=209 ttl=47 time=79.5 ns
64 bytes from 8.8.8.8: icmp_req=210 ttl=47 time=75.5 ns
64 bytes from 8.8.8.8: icmp_req=211 ttl=47 time=79.3 ns
64 bytes from 8.8.8.8: icmp_req=212 ttl=47 time=76.3 ns
64 bytes from 8.8.8.8: icmp_req=213 ttl=47 time=88.2 ns
  
```



Views: Server View

Almacenamiento VDIs (NAS / NFS)

Search...

General Storage Logs

Virtual Disks

Disks

Name	Description	Size	Virtual Machine
dbase 0	Created by tem...	8 GB	drouter
dbase 0	Created by tem...	8 GB	dnfs

scp00

Logged in as: Local root account

Search General Memory Storage Networking NICs Console Performance Users Logs

Storage Repositories

Storage

Name	Description	Type	Shared	Usage	Size	Virtual allocation
DVD drives on scp00	Physical DVD drives on scp00	udev	No	100% (324 MB used)	1024 MB	1024 MB
Imágenes ISO (PC / CIFS)	CIFS ISO Library [\\10.42.0.33\...]	ISO	Yes	26% (26.7 GB used)	99.9 GB	99.9 GB
Imágenes ISO (NAS / NFS)	NFS ISO Library [372.16.0.100\...]	ISO	Yes	2% (708.9 MB used)	20 GB	20 GB
Removable storage on x...	Physical removable storage o...	udev	No	0% (0 B used)	0 B	0 B
Almacenamiento VDi...	NFS SR [372.16.0.100\virt\ve...	NFS	Yes	0% (2 GB used)	200 GB	16 GB
Local storage on scp00	Local storage on scp00	LVM	No	45% (45.3 GB used)	100 GB	34.3 GB

c43aaae1-fa21-6ca5-0b4e-931a1faaf244

Archivo Inicio Compartir Vista

« NFS\_... » c43aaae... Buscar en c43aaae1-fa21...

Escritorio Sitios reci Grupo en el Este equipo Red

3a1b3429-ebf8-4b57-8e32-053004f1f623.vhd  
Tipo: VHD File Tamaño: 1,49 GB

9f208221-48ea-476a-91fc-2e239b25a958.vhd  
Tipo: VHD File Tamaño: 1,49 GB

79e90a0c-6ce5-440c-bd2a-c78f6026493a.vhd  
Tipo: VHD File Tamaño: 22,0 MB

filelog.txt  
Tamaño: 492 bytes

4 elementos 1 elemento seleccionado 1,49 GB

2014-03-01 22:38:50.363819 log: /var/run/sr-mount/c43aaae1-fa21-6ca5-0b4e-931a1faaf244 /var/run/sr-mount/c43aaae1-fa21-6ca5-0b4e-931a1faaf244/79e90a0c-6ce5-440c-bd2a-c78f6026493a.vhd vdi\_clone c43aaae1-fa21-6ca5-0b4e-931a1faaf244 79e90a0c-6ce5-440c-bd2a-c78f6026493a 569470b1-bb7b-45cf-b9ba-040fc8650d51

2014-03-01 22:38:50.592871 end: /var/run/sr-mount/c43aaae1-fa21-6ca5-0b4e-931a1faaf244 /var/run/sr-mount/c43aaae1-fa21-6ca5-0b4e-931a1faaf244/79e90a0c-6ce5-440c-bd2a-c78f6026493a.vhd done

ICS1

Configuración Global del Destino Portales Estadísticas Acceso autorizado Destinos

Nombre Base ip-2013-04-ga.ccsiovs.itg

Descubrir Método de autenticación user

Descubrir Grupo Autorizador 4

E/S de tiempo de espera 30

Intervalo NTPN 20

Máximo número unidades 16

Máximo número conexiones 8

Evitar Máquinas de R2T 255

Máximo R2T Pendientes 64

Longitud de la primera transmisión 268,344

Longitud máxima de transmisión 2,097,332

Longitud Máxima de recepción de datos 262,344

Tiempo por defecto de espera 2

Tiempo de retención por defecto 60

Habilitar SMC

Dirección IP de la controladora

**Editar Portal**

Comentario:

IP del portal

Dirección IPv4:

Puerto:

Borrar:

Dirección IPv4:

Puerto:

Borrar:

Dirección IPv4:

Puerto:

Borrar:

Add extra IP del portal

**iSCSI** ✕

Configuración Global del Destino Portales **Iniciadores** Acceso autorizado

ID de Grupo	Iniciadores	Red Autorizada	Comentario
2	ALL	172.16.0.0/24	Equipos da rede SAN

**iSCSI** ✕

Configuración Global del Destino **Portales** Iniciadores Acceso autorizado

ID del Portal del Grupo	Escuchar	Comentario
1	172.16.0.100:3260	

**Edit**

Nombre del destino:

Alias del destino:

Serial:

Marcadores destino:

ID del Portal del Grupo:

ID del grupo iniciador:

Metodo de Autentificación:

Número de Autentificación de Grupo:

**iSCSI** ✕

Configuración Global del Destino Portales Iniciadores Acceso autorizado **Destinos** Expandir Destinos

Nombre del destino	Alias del destino	Serial	Marcadores destino	ID del Portal del Grupo	ID del grupo iniciador	Metodo de Autentificación	ID del Grupo de Autentificación
iscsi-vdis	Almacenamiento para VDIs	0800278d83ee00	rw	1	2 (Equipos da rede SAN)	CHAP	1



**Edit**

Nombre del medio:  ⓘ

Tipo de medio:  ▾

Dispositivo:  ▾

Comentario:  ⓘ

iSCSI x

Configuración Global del Destino Portales Iniciadores Acceso autorizado Destinos **Extender**

Nombre del medio	Tipo de medio	Ruta al medio	Comentario
iSCSI_VDI	ZVOL	/dev/zvol/xen/iSCSI_VDI	

iSCSI x

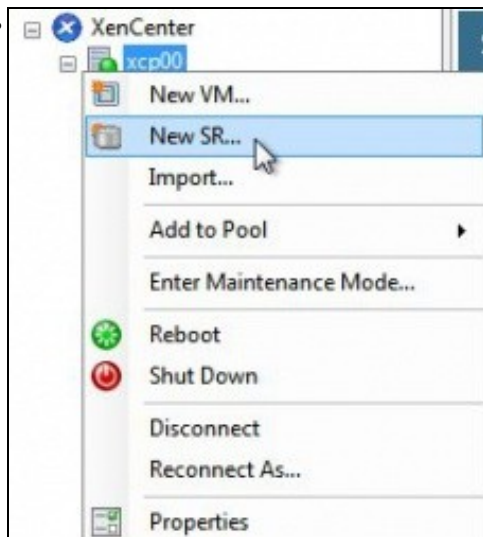
Configuración Global del Destino Portales Iniciadores Acceso autorizado Destinos Extender **Destinos asociados**

Destino	Medio (Extent)
iscsi-vdis	iSCSI_VDI

iSCSI x Servicios x

**Nucleo (Core)** Plugins

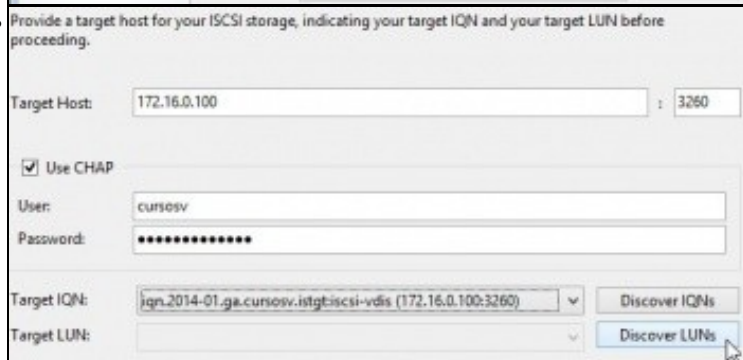
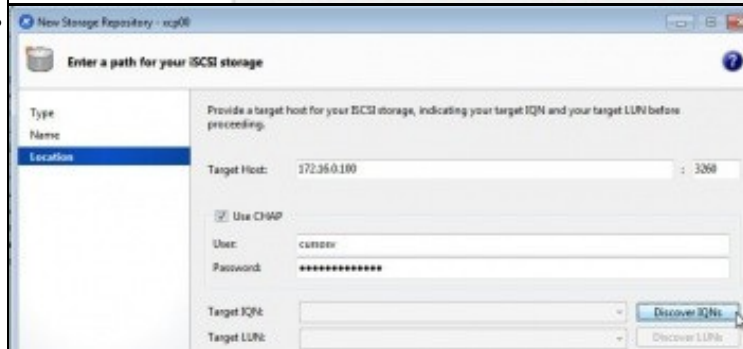
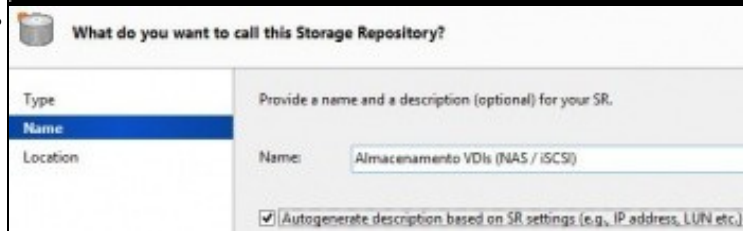
<b>AD</b>	<input type="checkbox"/> OFF	⚙
<b>AFP</b>	<input type="checkbox"/> OFF	⚙
<b>CIFS</b>	<input checked="" type="checkbox"/> ON	⚙
<b>DNS Dinamica</b>	<input type="checkbox"/> OFF	⚙
<b>FTP</b>	<input type="checkbox"/> OFF	⚙
<b>iSCSI</b>	<input checked="" type="checkbox"/> ON	⚙



```

[root@xcp00 ~]# ll /etc/iscsi/
total 32
drwxr-xr-x 2 root root 4096 Nov 26 17:57 /etc/iscsi
-rw-r--r-- 1 root root 50 Nov 26 17:53 initiatorname.iscsi
lrwxrwxrwx 1 root root 19 Apr 29 18:41 iscsid.conf -> iscsid-default.conf
-rw-r--r-- 1 root root 8293 Nov 22 2012 iscsid-default.conf
-rw-r--r-- 1 root root 8282 Nov 22 2012 iscsid-mpath.conf
[root@xcp00 ~]#

```



- Provide a target host for your iSCSI storage, indicating your target IQN and your target LUN before proceeding.

Target Host: 172.16.0.100 : 3260

Use CHAP

User: cursosv

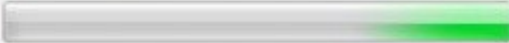
Password: ●●●●●●●●

Target IQN: iqn.2014-01.ga.cursosv.lstgt:iscsi-vdls (172.16.0.100:3260) Discover IQNs


Target LUN: LUN 0: 0800278d83ee000: 200 GB (FreeBSD) Discover LUNs

**XenCenter**

Scanning for LVM over iSCSI SRs on 172.16.0.100

 Cancel

**Location**

 Creating a new virtual disk on this LUN will destroy any data present. You must ensure that no other system is using the LUN, including any XenServers, or the virtual disk may become corrupted while in use.

Do you wish to format the disk?

Yes No

**XenCenter**

Creating SR

 Cancel

**XenCenter**

- xen00
  - dbase-recén-instalada
  - dMySQL
  - dnfs
  - drouter
  - dx2go
  - Almacenamiento VDIs (NAS / iSCSI)
  - Almacenamiento VDIs (NAS / NFS)
  - Backup (NAS / CIFS)
  - Backup (NAS / NFS)
  - DVD drives
  - Imaxes ISO (NAS / NFS)
  - Imaxes ISO (PC / CIFS)
  - Local storage
  - Removable storage
  - dbase

Almacenamiento VDIs (NAS / iSCSI) Logged in as: Local root account

Storage General Properties

Properties Expand all Collapse all

General

Name Almacenamiento VDIs (NAS / iSCSI)

Description iSCSI SR [172.16.0.100 (ipn2014-01.ga.cursor.virt@kcsi-vmc) LUN 0: 080278d81ee000: 200 GB (FreeBSD)]

Tags <None>

Folders <None>

Type LVM over iSCSI

Size 4 MB used of 200 GB total (0 B allocated)

SCSI ID: 33300000e948e10

UUID: 8372877c-c26f-1e95-40e9-425054ced835

Status

State OK

xen0: Connected

Multipathing

xen0: Not active

xen00 Logged in as: Local root account

Search General Memory Storage Networking NICs Console Performance Users Logs

Storage Repositories

Storage

Name	Description	Type	Shared	Usage	Size	Virtual al
Almacenamiento VDIs (NAS / iSCSI)	iSCSI SR [172.16.0.100 (ipn2014-01.ga.cursor.virt@kcsi-vmc) LUN 0: 080278d81ee000: 200 GB (FreeBSD)]	LVM ..	Yes	0% (4 MB used)	200 GB	0 B
Almacenamiento VDIs (NAS / NFS)	NFS SR [172.16.0.100/mnt/xen00: 200 GB (FreeBSD)]	NFS	Yes	0% (1.4 GB used)	200 GB	16 GB
Backup (NAS / CIFS)	CIFS ISO Library [\\10.42.0.10\share] 100 GB	ISO	Yes	10% (10.3 GB us...)	100 GB	100 GB
Backup (NAS / NFS)	NFS ISO Library [10.42.0.100:/mnt/iso] 100 GB	ISO	Yes	10% (10.3 GB us...)	100 GB	100 GB
DVD drives on xen00	Physical DVD drives on xen00	udf	No	100% (1024 MB ...)	1024 ...	1024 MB
Imaxes ISO (NAS / NFS)	NFS ISO Library [172.16.0.100:/mnt/iso] 50 GB	ISO	Yes	1% (778.7 MB us...)	50 GB	50 GB
Imaxes ISO (PC / CIFS)	CIFS ISO Library [\\10.42.0.10\share] 646 GB	ISO	Yes	15% (98.2 GB us...)	646 GB	646 GB
Local storage on xen00	Local storage on xen00	LVM	No	46% (46.1 GB us...)	100 GB	34.3 GB
Removable storage on xen00	Physical removable storage on xen00	udf	No	0% (0 B used)	0 B	0 B

XenCenter

xen00

- dbase-recén-instalada
- dMySQL
- dnfs
- drouter
- dx2go
- Almacenamiento VDIs (NAS / iSCSI)
- Almacenamiento VDIs (NAS / NFS)
- Backup
- Backup
- DVD drives on xen00
- Imaxes ISO (NAS / NFS)

Set as Default

Detach...

Properties

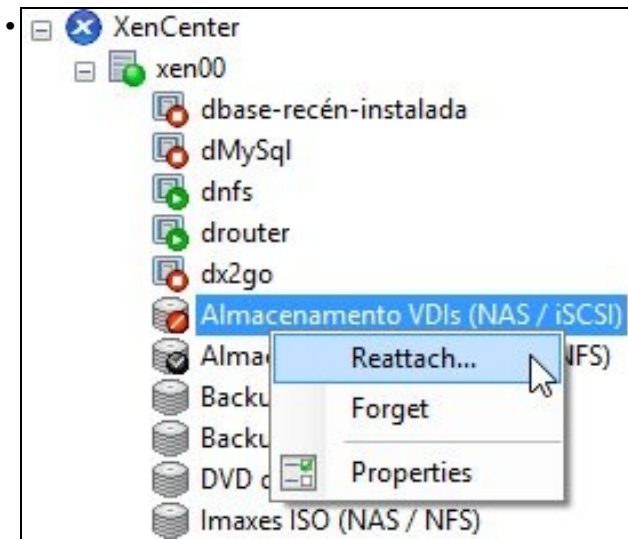
Detach Storage Repository

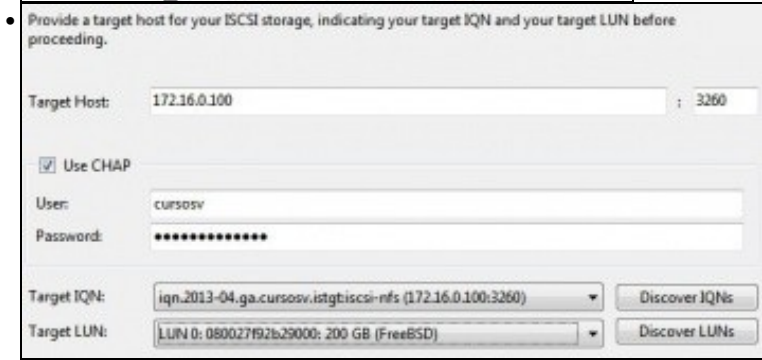
Warning: Detaching this storage repository will make the virtual disks that it contains inaccessible. The contents of the virtual disks themselves will remain intact.

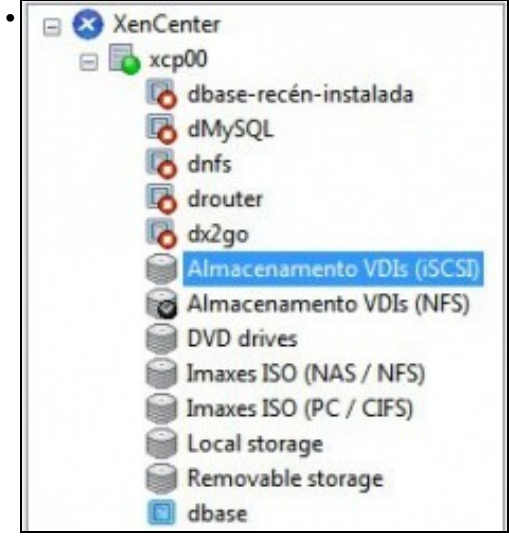
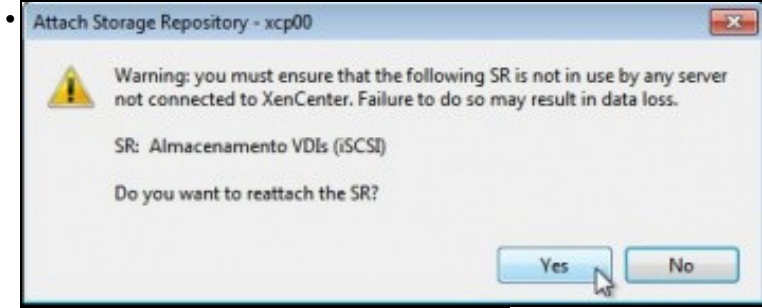
If you subsequently reattach the storage repository, you will need to provide the correct device configuration details.

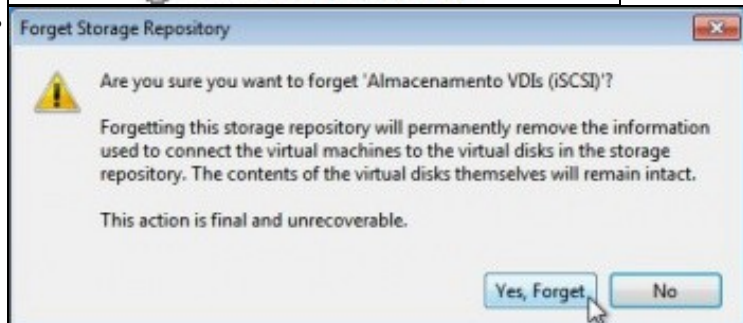
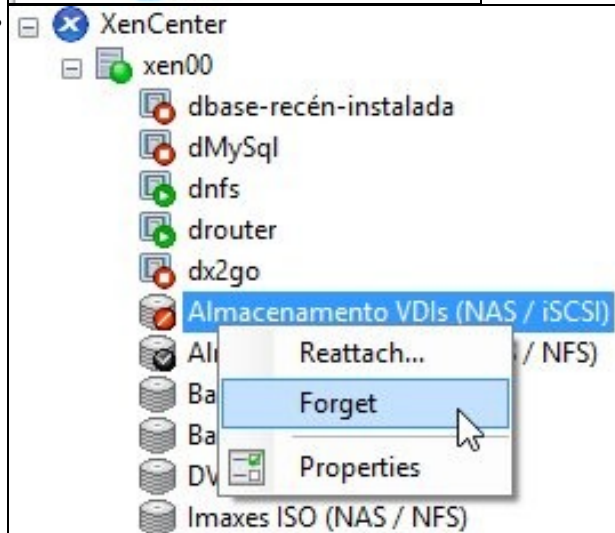
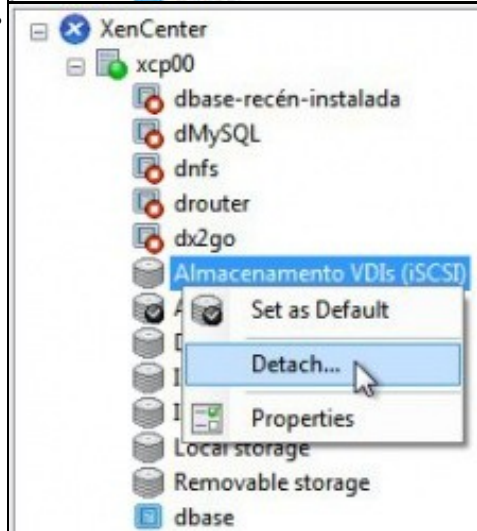
Are you sure you want to detach this storage repository?

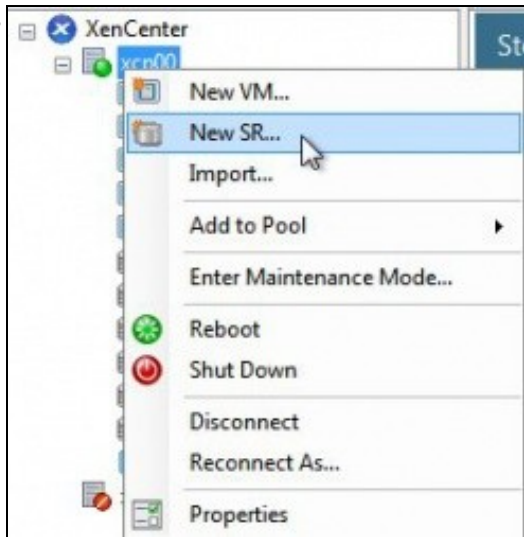
Yes No



- Provide a target host for your iSCSI storage, indicating your target IQN and your target LUN before proceeding.  
A screenshot of the iSCSI configuration dialog box. The 'Target Host' field contains '172.16.0.100' and the port is '3260'. The 'Use CHAP' checkbox is checked. The 'User' field contains 'cursosv' and the 'Password' field is masked with dots. The 'Target IQN' dropdown shows 'iqn.2013-04.ga.cursosv.istgtiscsi-nfs (172.16.0.100:3260)' and there is a 'Discover IQNs' button. The 'Target LUN' dropdown shows 'LUN 0: 080027f92b29000: 200 GB (FreeBSD)' and there is a 'Discover LUNs' button.







Target Host: 172.16.0.100 : 3260

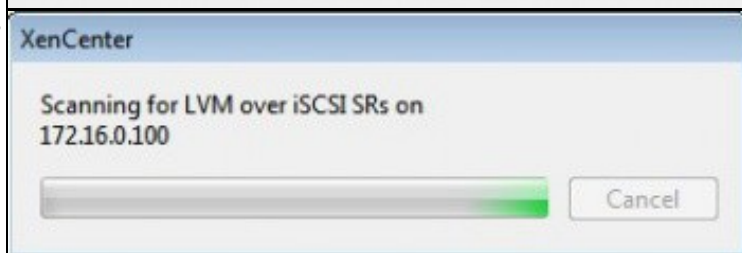
Use CHAP

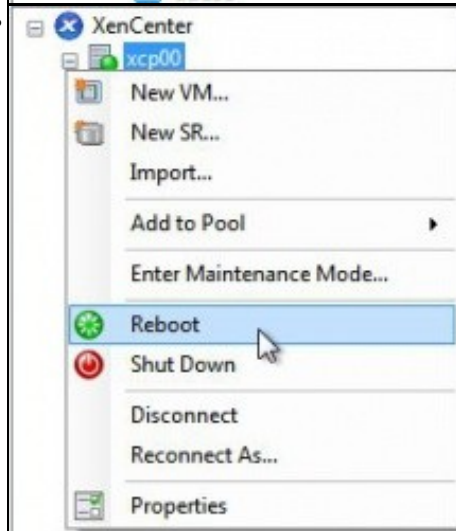
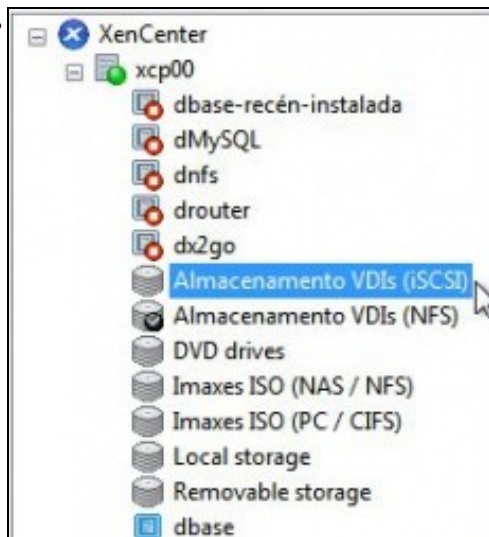
User: cursorv

Password: .....

Target IQN: iqn.2013-04.ga.cursorv.itgt:iscsi-nfs (172.16.0.100:3260) Discover IQNs

Target LUN: LUN 0: 000027f92b29000: 200 GB (FreeBSD) Discover LUNs





```

root@xcp00 ~# ll /etc/iscsi/
total 40
drwxr-xr-x 2 root root 4096 May 26 15:01 .
-rw-r--r-- 1 root root 68 May 26 15:01 initiatorname.iscsi
lrwxr-xr-x 1 root root 19 Apr 29 18:41 iscsid.conf -> iscsid-default.conf
-rw-r--r-- 1 root root 8203 Nov 22 2012 iscsid-default.conf
-rw-r--r-- 1 root root 8202 Nov 22 2012 iscsid-npath.conf
-rw-r--r-- 1 root root 0 May 26 14:41 lock
drwxr-xr-x 3 root root 4096 May 26 15:01 nodes
drwxr-xr-x 3 root root 4096 May 26 15:01 send_targets
root@xcp00 ~#

```

```

root@xcp00 ~# ll /etc/iscsi/nodes/
total 4
drwxr-xr-x 3 root root 4096 May 26 15:01 iqn.2014-01.ga.cursosu.istgt:iscsi-odis
root@xcp00 ~#

```

```

root@xcp00 ~# cat /etc/iscsi/nodes/iqn.2014-01.ga.cursosu.istgt:iscsi-odis/172
16.0.100N,3260N,1/default
# BEGIN RECORD 2,0-871
node.name = iqn.2014-01.ga.cursosu.istgt:iscsi-odis
node.tpgt = 1
node.startup = manual
iface.iscsi_iface_name = default
iface.transport_name = tcp
node.discovery_address = 172.16.0.100
node.discovery_port = 3260
node.discovery_type = send_targets
node.session.initial_cmds_max = 0
node.session.initial_login_retry_max = 4
node.session.xmit_thread_priority = -20
node.session.cmds_max = 128
node.session.queue_depth = 32
node.session.auth.authmethod = CHAP
node.session.auth.username = cursosu
node.session.auth.password = abc123456789.

```



```

XenServer 6.2                               09:48:02                               xen00
----- Configuration -----

Current Storage Repositories

Almacenamiento UDIs (NAS / NFS) (default)  Size      199GB total, 199GB free
Almacenamiento UDIs (NAS / ISCSI)         Type      LUN over iSCSI
Backup (NAS / CIFS)                       Shared    Yes
Backup (NAS / NFS)                        Default   No
Images ISO (NAS / NFS)
Images ISO (PC / CIFS)
DVD drives
Local storage
Removable storage

Almacenamiento UDIs (NAS / ISCSI)

This Storage Repository is detached
and not usable by this host.

Description
iSCSI SR 1172.16.0.100
(Clq.2014-01.ga.carsoso.lstgt:iscsi-u
dis: LUN 0: 0000270d83ee000: 200 GB
(FreeBSD))

```