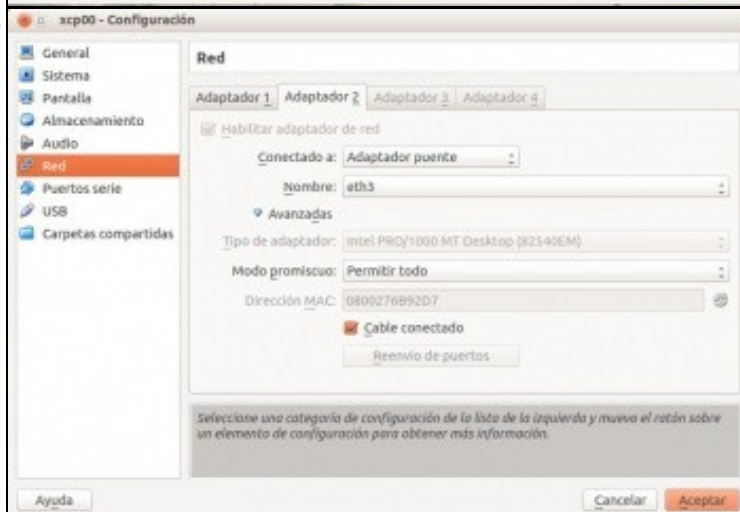
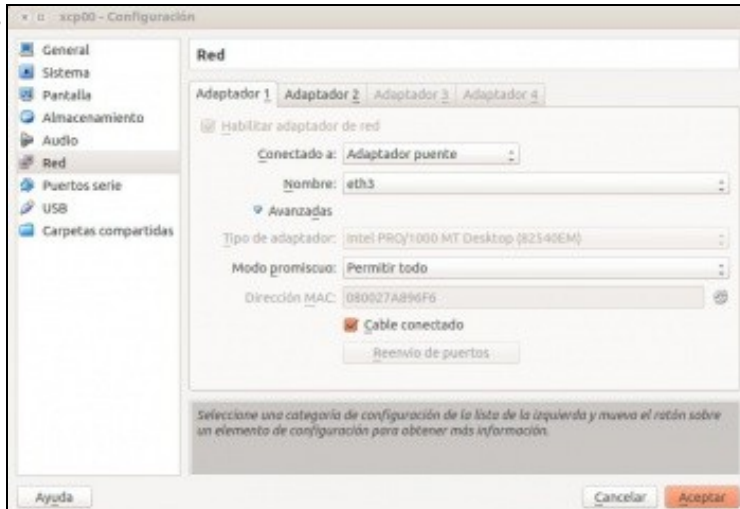


XenServer

• ????????????????



```
root@xcp00 ~]# xe pif-list
uuid ( RO) : 78aca93e-11db-f2a0-717f-ec674596945d
    device ( RO) : eth1
    currently-attached ( RO) : true
    VLAN ( RO) : -1
    network-uuid ( RO) : 78c7ce0b-ea07-ac27-7075-3444cd01e960

uuid ( RO) : be8132be-3306-dce1-9276-09e9abb837dd
    device ( RO) : eth0
    currently-attached ( RO) : true
    VLAN ( RO) : -1
    network-uuid ( RO) : Bee98d45-22c1-066d-07a9-3ca3eb595594
```

Logged in as: Local root account

Search | General | Memory | Storage | Networking | NICs | Console | Performance | Users | Logs

Network Interface Cards

Interfaces

NIC	MAC	Link Status	Speed	Duplex	Vendor	Device
NIC 1	08:00:27:6b:02:d7	Connected	1000 Mbit/s	Full	Intel Corporation	82540EM Gigabit Ethernet Cont
NIC 0	08:00:27:a8:96:f6	Connected	1000 Mbit/s	Full	Intel Corporation	82540EM Gigabit Ethernet Cont

```

[root@xcp00 ~]# ifconfig
eth0      Link encap:Ethernet HWaddr 08:00:27:AB:96:F6
          UP BROADCAST RUNNING PROMISC MULTICAST MTU:1500 Metric:1
          RX packets:1975 errors:0 dropped:0 overruns:0 frame:0
          TX packets:3028 errors:0 dropped:0 overruns:0 carrier:0
          collisions:0 txqueuelen:1000
          RX bytes:500916 (496.9 KiB) TX bytes:4666676 (4.4 MiB)

eth1      Link encap:Ethernet HWaddr 08:00:27:6B:92:D7
          UP BROADCAST RUNNING PROMISC MULTICAST MTU:1500 Metric:1
          RX packets:5651 errors:0 dropped:0 overruns:0 frame:0
          TX packets:0 errors:0 dropped:0 overruns:0 carrier:0
          collisions:0 txqueuelen:1000
          RX bytes:5141720 (4.9 MiB) TX bytes:0 (0.0 b)

lo        Link encap:Local Loopback
          inet addr:127.0.0.1 Mask:255.0.0.0
          UP LOOPBACK RUNNING MTU:16436 Metric:1
          RX packets:1805 errors:0 dropped:0 overruns:0 frame:0
          TX packets:1805 errors:0 dropped:0 overruns:0 carrier:0
          collisions:0 txqueuelen:0
          RX bytes:5624803 (5.3 MiB) TX bytes:5624803 (5.3 MiB)

xenbr0    Link encap:Ethernet HWaddr 08:00:27:AB:96:F6

```

```

[root@xcp00 ~]# ifconfig | grep Ethernet
eth0      Link encap:Ethernet HWaddr 08:00:27:AB:96:F6
eth1      Link encap:Ethernet HWaddr 08:00:27:6B:92:D7
xenbr0    Link encap:Ethernet HWaddr 08:00:27:AB:96:F6
xenbr1    Link encap:Ethernet HWaddr 08:00:27:6B:92:D7
[root@xcp00 ~]#

```

```

[root@xcp00 ~]# ifconfig xenbr0
xenbr0    Link encap:Ethernet HWaddr 08:00:27:AB:96:F6
          inet addr:10.42.0.200 Bcast:10.42.0.255 Mask:255.255.255.0
          UP BROADCAST RUNNING PROMISC MULTICAST MTU:1500 Metric:1
          RX packets:1945 errors:0 dropped:0 overruns:0 frame:0
          TX packets:2280 errors:0 dropped:0 overruns:0 carrier:0
          collisions:0 txqueuelen:0
          RX bytes:184828 (180.4 KiB) TX bytes:8863826 (8.4 MiB)

[root@xcp00 ~]#
[root@xcp00 ~]# ifconfig xenbr1
xenbr1    Link encap:Ethernet HWaddr 08:00:27:6B:92:D7
          UP BROADCAST RUNNING PROMISC MULTICAST MTU:1500 Metric:1
          RX packets:26 errors:0 dropped:0 overruns:0 frame:0
          TX packets:0 errors:0 dropped:0 overruns:0 carrier:0
          collisions:0 txqueuelen:0
          RX bytes:4271 (4.1 KiB) TX bytes:0 (0.0 b)

```

Server Networks

Name	Description	NIC	VLAN	Auto	Link Status	MAC	MTU
Network 0		NIC 0	-	Yes	Connected	08:00:27:ab:96:f6	1500
Network 1		NIC 1	-	Yes	Connected	08:00:27:6b:92:d7	1500

IP Address Configuration

Server	Interface	Network	NIC	IP Setup	IP Address	Subnet mask	Gateway	DNS
xcp00	Management Network 0	NIC 0	Static	10.42.0.200	255.255.255.0	10.42.0.1	10.42.0.1	

Network 0 Properties

General Xestión

Custom Fields <None>

Network Settings Physical device

General

XenCenter provides several methods for labelling and org tags you can quickly group and manage resources across

Name: Xestión

Description:

Folder: <None> [Change...](#)

Tags: <None> [Edit tags...](#)

Network 0 Properties

General Xestión

Custom Fields <None>

Network Settings Physical device

Network Settings

Use the controls below to configure advanced settings for your network. If your changes will result in temporary disruption of the network you will be informed below.

MTU: 1500

Automatically add this network to new virtual machines.

(The network's MTU cannot be changed as it is in use as the management interface 'Management')

xcp00 Logged in as: Local root account

Search General Memory Storage Networking NICs Console Performance Users Logs

Server Networks

Networks

Name	Description	NIC	VLAN	Auto	Link Status	MAC	MTU
Xestión		NIC 0	-	Yes	Connected	08:00:27:ab:96:96	1500
Network 1		NIC 1	-	Yes	Connected	08:00:27:8b:92:d7	1500

Add Network... Properties Remove

IP Address Configuration

Server	Interface	Network	NIC	IP Setup	IP Address	Subnet mask	Gateway	DNS
xcp00	Management	Network 0	NIC 0	Static	10.42.0.200	255.255.255.0	10.42.0.1	10.42.0.1

Configure...

Configure IP Addresses - xcp00

Configure IP address settings for server management traffic (the management interface) on 'xcp00' here. You can also assign IP addresses for dedicated storage or other types of network traffic (secondary interfaces).

Management Xestión Static

Add IP address

Management Interface

Network: Xestión

IP address and DNS server settings:

Automatically obtain settings using DHCP

Use these settings:

IP address: 10.42.0.200

Subnet mask: 255.255.255.0

Gateway: 10.42.0.1

Preferred DNS server: 10.42.0.1

Alternate DNS server 1:

Alternate DNS server 2:

Logged in as: Local root account

Search | General | Memory | Storage | **Networking** | NICs | Console | Performance | Users | Logs

Server Networks

Networks

Name	Description	NIC	VLAN	Auto	Link Status	MAC	MTU
Xeston		NIC 0	-	Yes	Connected	08:00:27:a8:96:95	1500
Network 1		NIC 1	-	Yes	Connected	08:00:27:6b:92:d7	1500

Add Network... Properties Remove

IP Address Configuration

Server	Interface	Network	NIC	IP Setup	IP Address	Subnet mask	Gateway	DNS
xcp00	Management Xeston		NIC 0	Static	10.42.0.200	255.255.255.0	10.42.0.1	10.42.0.1

Configure...

```
[root@xcp00 ~]# xe vm-list
uuid ( RO) : 5dd57be4-f55a-174b-2a89-9f93a3dda26a
name-label ( RW): dbase-rec6n-instalada
power-state ( RO): halted

uuid ( RO) : 9de5cee5-b105-1691-9588-e5de1d294e3f
name-label ( RW): dMySQL
power-state ( RO): halted

uuid ( RO) : c2392e53-ae8e-5d0e-f15a-c962047ad75f
name-label ( RW): dx2go
power-state ( RO): halted

uuid ( RO) : 060a607d-a0b6-406d-a82d-4ac1110054ac
name-label ( RW): Control domain on host: xcp00
power-state ( RO): running

[root@xcp00 ~]#
```

```
[root@xcp00 ~]# xe vif-list
uuid ( RO) : 51a57837-0d2e-cc32-78d1-80e644f4ecfc
vm-uuid ( RO): 887f6952-4951-bb17-5d0b-489445929210
device ( RO): 0
network-uuid ( RO): 8ee98d45-22c1-066d-07a9-3ca3eb595594

uuid ( RO) : e2be909a-815e-2d66-c1ac-c494b3d0638e
vm-uuid ( RO): fdac41bf-4dee-00ad-2c5d-4e4045b309af
device ( RO): 0
network-uuid ( RO): 8ee98d45-22c1-066d-07a9-3ca3eb595594

uuid ( RO) : 2f78f1a2-3f1a-76c8-d4b3-722e4ad72b0f
vm-uuid ( RO): 5dd57be4-f55a-174b-2a89-9f93a3dda26a
device ( RO): 0
network-uuid ( RO): 8ee98d45-22c1-066d-07a9-3ca3eb595594

uuid ( RO) : 4d20aaac-9ffa-dc01-5f90-156723dcbe84
vm-uuid ( RO): c2392e53-ae8e-5d0e-f15a-c962047ad75f
device ( RO): 0
network-uuid ( RO): 8ee98d45-22c1-066d-07a9-3ca3eb595594
```

Views: Server View | **dMySQL on 'xcp00'**

Search | General | Memory | Storage | **Networking** | Console | Performance | Snapshots | Logs

Virtual Network Interfaces

Networks

Device	MAC	Limit	Network	IP Address
0	ca28:local:33:20	Xeston	10.42.0.1	10.42.0.20

```

[root@xcp00 ~]# ifconfig
eth0      Link encap:Ethernet  HWaddr 08:00:27:A8:96:F6
          UP BROADCAST RUNNING PROMISC MULTICAST  MTU:1500  Metric:1
          RX packets:1715 errors:0 dropped:0 overruns:0 frame:0
          TX packets:4785 errors:0 dropped:0 overruns:0 carrier:0
          collisions:0 txqueuelen:1000
          RX bytes:261942 (255.8 KiB)  TX bytes:5577812 (5.3 MiB)

eth1      Link encap:Ethernet  HWaddr 08:00:27:6B:92:D7
          UP BROADCAST RUNNING PROMISC MULTICAST  MTU:1500  Metric:1
          RX packets:6495 errors:0 dropped:0 overruns:0 frame:0
          TX packets:0 errors:0 dropped:0 overruns:0 carrier:0
          collisions:0 txqueuelen:1000
          RX bytes:5834888 (5.5 MiB)  TX bytes:0 (0.0 b)

lo        Link encap:Local Loopback
          inet addr:127.0.0.1  Mask:255.0.0.0
          UP LOOPBACK RUNNING  MTU:16436  Metric:1
          RX packets:2784 errors:0 dropped:0 overruns:0 frame:0
          TX packets:2784 errors:0 dropped:0 overruns:0 carrier:0
          collisions:0 txqueuelen:0
          RX bytes:6284222 (5.9 MiB)  TX bytes:6284222 (5.9 MiB)

vif1.0    Link encap:Ethernet  HWaddr FE:FF:FF:FF:FF:FF

```

```

[root@xcp00 ~]# ifconfig vif1.0
vif1.0    Link encap:Ethernet  HWaddr FE:FF:FF:FF:FF:FF
          UP BROADCAST RUNNING NOARP PROMISC  MTU:1500  Metric:1
          RX packets:16 errors:0 dropped:0 overruns:0 frame:0
          TX packets:99 errors:0 dropped:0 overruns:0 carrier:0
          collisions:0 txqueuelen:32
          RX bytes:1372 (1.3 KiB)  TX bytes:8169 (7.9 KiB)

```

```

[root@xcp00 ~]# xe pif-param-list uuid=be8132be-3306-dce1-9276-09e9abb837d4
uuid ( RO) : be8132be-3306-dce1-9276-09e9abb837d4
  device ( RO): eth0
  MAC ( RO): 08:00:27:a8:96:f6
  physical ( RO): true
  currently-attached ( RO): true
  MTU ( RO): 1500
  VLAN ( RO): -1
  bond-master-of ( RO):
  bond-slave-of ( RO): <not in database>
  tunnel-access-PIF-of ( RO):
  tunnel-transport-PIF-of ( RO):
  management ( RO): true
  network-uuid ( RO): 8ee98d45-22c1-066d-07a9-3ca3eb595594
  network-name-label ( RO): Network 0
  host-uuid ( RO): f175cc75-09b7-463d-94c7-a5eebcc82722
  host-name-label ( RO): xcp00
  IP-configuration-mode ( RO): Static
  IP ( RO): 10.42.0.200
  netmask ( RO): 255.255.255.0
  gateway ( RO): 10.42.0.1
  IPv6-configuration-mode ( RO): None
  IPv6 ( RO):

```

```

  IP-configuration-mode ( RO): Static
  IP ( RO): 10.42.0.200
  netmask ( RO): 255.255.255.0
  gateway ( RO): 10.42.0.1
  IPv6-configuration-mode ( RO): None
  IPv6 ( RO):
  IPv6-gateway ( RO):
  primary-address-type ( RO): IPv4
  DNS ( RO): 10.42.0.1
  io_read_kbs ( RO): 0.254
  io_write_kbs ( RO): 0.159
  carrier ( RO): true
  vendor-id ( RO): 8086
  vendor-name ( RO): Intel Corporation
  device-id ( RO): 100e
  device-name ( RO): 82540EM Gigabit Ethernet Controller
  speed ( RO): 1000 Mbit/s
  duplex ( RO): full
  disallow-unplug ( RW): false
  pci-bus-path ( RO): 0000:00:03.0
  other-config ( RW):

```

Search | General | Memory | Storage | Networking | NICs | Console | Performance | Users | Logs

Server Networks

Networks

Name	Description	NIC	VLAN	Auto	Link Status	MAC	MTU
Xenion		NIC 0	-	Yes	Connected	08:00:27:a8:96:f6	1500
Network 1		NIC 1	-	Yes	Connected	08:00:27:6b:92:d7	1500

Add Network... Properties Remove

Network Interface Cards

NIC	MAC	Link Status	Speed	Duplex
NIC 1	08:00:27:fb:92:d7	Connected	1000 Mb/s	Full
NIC 0	08:00:27:a8:96:f5	Connected	1000 Mb/s	Full

Create Bond... Delete Bond Rescan

Create Bond

NIC	MAC	Link Status	Speed	Duplex	Vendor	Device	
<input checked="" type="checkbox"/>	NIC 0	08:00:27:a8:96:f5	Connected	1000 Mb/s	Full	Intel Corporation	82540EM Gigabit Ethernet C
<input checked="" type="checkbox"/>	NIC 1	08:00:27:fb:92:d7	Connected	1000 Mb/s	Full	Intel Corporation	82540EM Gigabit Ethernet C

Bond mode

Active-active
 Active-passive
 LACP with load balancing based on IP and port of source and destination
 LACP with load balancing based on source MAC address

MTU: 1500

Automatically add this network to new virtual machines

Create Cancel

New Network - xcp00

Select members for the new bonded network

Select Type

Bond Members

Select the NICs you would like to use in this bond and the bond settings, and confirm which should be added to new VMs.

NIC	MAC	Link Status	Speed	Duplex	Vendor	
<input checked="" type="checkbox"/>	NIC 0	08:00:27:a8:96:f5	Connected	1000 Mb/s	Full	Intel Corporation
<input checked="" type="checkbox"/>	NIC 1	08:00:27:fb:92:d7	Connected	1000 Mb/s	Full	Intel Corporation

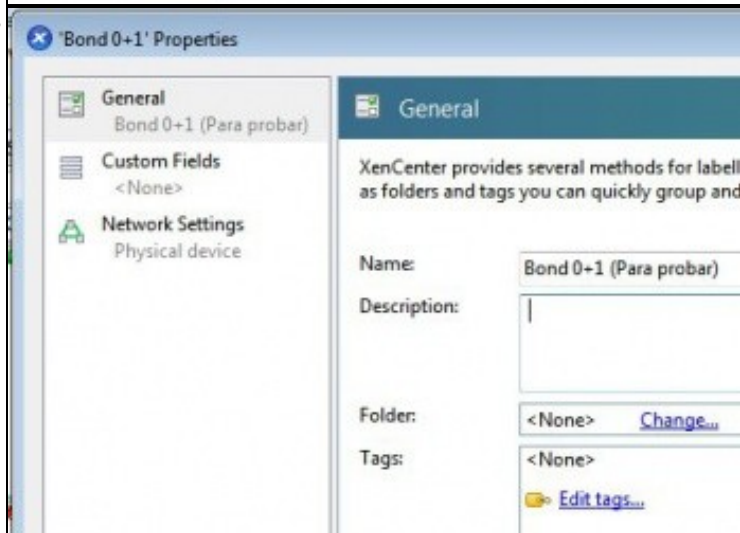
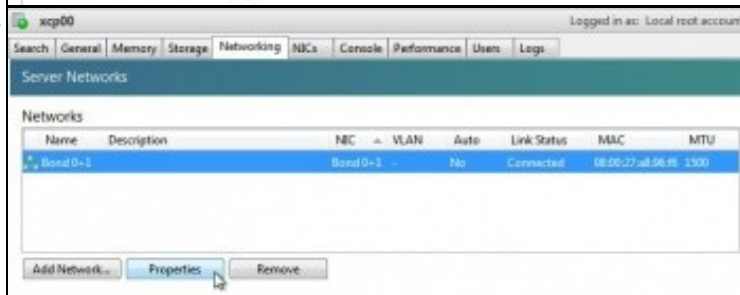
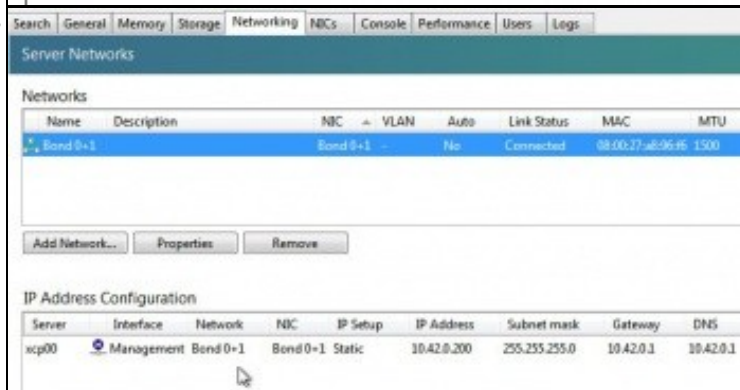
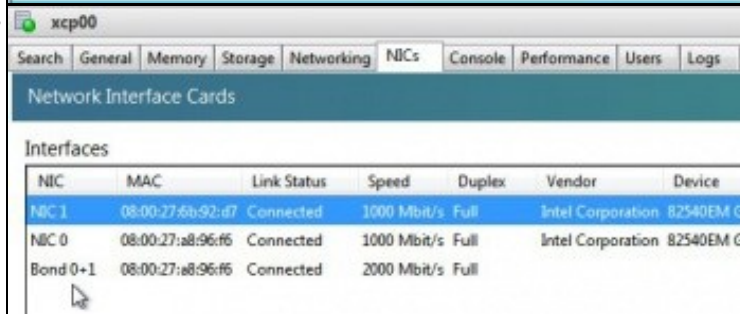
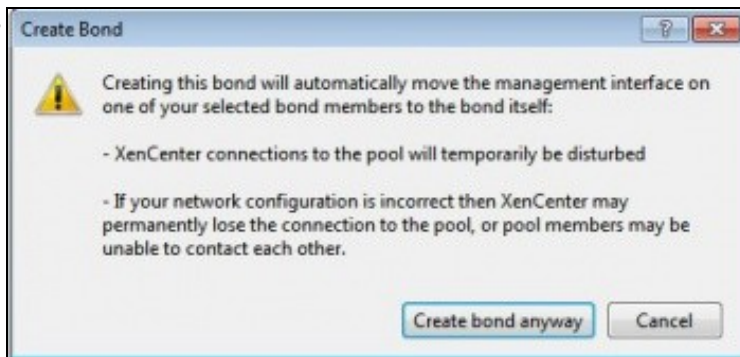
Bond mode

Active-active
 Active-passive
 LACP with load balancing based on IP and port of source and destination
 LACP with load balancing based on source MAC address

MTU: 1500

Automatically add this network to new virtual machines

CITRIX



Bond 0+1 Properties

General
Bond 0+1 (Para probar)

Custom Fields
+None+

Network Settings
Physical device

Network Settings

Use the controls below to configure advanced settings for your network. If your changes will result in temporary disruption of the network you will be informed below.

Bond mode:

- Active-active
- Active-passive
- LACP with load balancing based on IP and port of source and destination
- LACP with load balancing based on source MAC address

MTU: 1500

Automatically add this network to new virtual machines.

(The network's MTU cannot be changed as it is in use as the management interface 'Management')

IP Address Configuration

Server	Interface	Network	NIC	IP Setup	IP Address	Subnet mask	Gateway	DNS
xcp00	Management	Bond 0+1 (Para probar)	Bond 0+1	Static	10.42.0.200	255.255.255.0	10.42.0.1	10.42.0.1

Configure...

IP Address Configuration

Server	Interface	Network	NIC	IP Setup	IP Address	Subnet mask	Gateway	DNS
xcp00	Management	Bond 0+1	Bond 0+1	Static	10.42.0.200	255.255.255.0	10.42.0.1	10.42.0.1

Configure...

Management
Bond 0+1 (Para Probar); S...

Add IP address

Management Interface

Network: Bond 0+1 (Para Probar)

IP address and DNS server settings:

- Automatically obtain settings using DHCP
- Use these settings:

IP address:	10.42.0.200
Subnet mask:	255.255.255.0
Gateway:	10.42.0.1
Preferred DNS server:	10.42.0.1
Alternate DNS server 1:	
Alternate DNS server 2:	

```
xcp 1.6.18 18:54:01 root@xcp00
Configuration
```

Customize System	Immotek GmbH
Status Display	VirtualBox
Network and Management Interface	xcp 1.6.18 -61889c
Authentication	
Virtual Machines	
Disks and Storage Repositories	
Resource Pool Configuration	
Hardware and BIOS Information	
Keyboard and Timeszone	
Remote Service Configuration	
Backup, Restore and Update	
Technical Support	
Reboot or Shutdown	
Local Command Shell	

```
<Enter> OK <Up/Down> Select <Enter> Fingerprints <F5> Refresh
```

Management Network Parameters

Device	bond8
IP address	10.42.0.200
Netmask	255.255.255.0
Gateway	10.42.0.1

Press <Enter> to display the SSL key fingerprints for this host


```

64 bytes from 8.8.8.8: icmp_seq=16 ttl=47 time=77.3 ns
64 bytes from 8.8.8.8: icmp_seq=17 ttl=47 time=77.6 ns
64 bytes from 8.8.8.8: icmp_seq=18 ttl=47 time=74.5 ns
64 bytes from 8.8.8.8: icmp_seq=19 ttl=47 time=73.5 ns
64 bytes from 8.8.8.8: icmp_seq=20 ttl=47 time=74.8 ns
^C
--- 8.8.8.8 ping statistics ---
20 packets transmitted, 20 received, 0% packet loss, time 19186ms
rtt min/avg/max/ndev = 73.358/75.901/84.049/2.390 ns
[root@xcp00 ~]#

```

Adaptador 1 Adaptador 2 Adaptador 3 Adaptador 4

Habilitar adaptador de red

Conectado a: Adaptador puente

Nombre: eth3

Avanzadas

Tipo de adaptador: Intel PRO/1000 MT Desktop (82540EM)

Modo promiscuo: Permitir todo

Dirección MAC: 080027A896F6

Cable conectado

Reenvío de puertos

xcp00

Search General Memory Storage Networking NICs Console Performance Users Logs

Network Interface Cards

Interfaces

NIC	MAC	Link Status	Speed	Duplex	Vendor	Device
NIC 1	08:00:27:6b:92:d7	Connected	1000 Mbit/s	Full	Intel Corporation	82540EM G
NIC 0	08:00:27:a8:96:f6	Disconnected	-	-	Intel Corporation	82540EM G
Bond 0+1	08:00:27:a8:96:f6	Connected	1000 Mbit/s	Half		

```

64 bytes from 10.42.0.200: icmp_req=30 ttl=64 time=0.669 ms
64 bytes from 10.42.0.200: icmp_req=31 ttl=64 time=0.340 ms
64 bytes from 10.42.0.200: icmp_req=32 ttl=64 time=1.86 ms
64 bytes from 10.42.0.200: icmp_req=34 ttl=64 time=0.402 ms
64 bytes from 10.42.0.200: icmp_req=35 ttl=64 time=0.872 ms
64 bytes from 10.42.0.200: icmp_req=36 ttl=64 time=1.05 ms
64 bytes from 10.42.0.200: icmp_req=37 ttl=64 time=0.940 ms
^C
--- 10.42.0.200 ping statistics ---
37 packets transmitted, 36 received, 2% packet loss, time 36029ms
rtt min/avg/max/ndev = 0.313/1.375/10.579/1.711 ms
administrador@base:~$

```

Adaptador 1 Adaptador 2 Adaptador 3 Adaptador 4

Habilitar adaptador de red

Conectado a: Adaptador puente

Nombre: eth3

Avanzadas

Tipo de adaptador: Intel PRO/1000 MT Desktop (82540

Modo promiscuo: Permitir todo

Dirección MAC: 080027A896F6

Cable conectado

Reenvío de puertos

xcp00 logged in as: Local root acs

Search | General | Memory | Storage | Networking | NICs | Console | Performance | Users | Logs

Server Networks

Networks

Name	Description	NIC	VLAN	Auto	Link Status	MAC	MTU
Bond 0+1	(Para probar)	Bond 0+1	-	No	Connected	08:00:27:a8:96:a6	1500

Add Network... Properties Remove

xcp00

Search | General | Memory | Storage | Networking | NICs | Console

Network Interface Cards

Interfaces

NIC	MAC	Link Status	Speed	Duplex
NIC 1	08:00:27:6b:d2:d7	Connected	1000 Mbit/s	Full
NIC 0	08:00:27:a8:96:a6	Connected	1000 Mbit/s	Full
Bond 0+1	08:00:27:a8:96:a6	Connected	2000 Mbit/s	Full

Create Bond... Delete Bond Rescan

Delete Bond

Are you sure that you want to delete Bond 0+1?

Deleting this bond will automatically transfer the management interface on the bond to the first slave member of the bond:

- XenCenter connections to the pool will temporarily be disturbed
- If your network configuration is incorrect then XenCenter may permanently lose the connection to the pool, or pool members may be unable to contact each other.

Delete bond anyway Cancel

xcp00

Search | General | Memory | Storage | Networking | NICs | Console | Perform

Server Networks

Networks

Name	Description	NIC	VLAN	Auto
Xestión		NIC 0	-	Yes
Network 1		NIC 1	-	Yes

Add Network... Properties Remove

New Network - xcp00

Choose the type of network to create

Select Type

Select the type of new network you would like to create:

- External Network**
Create a network that passes traffic over one of your VLANs.
- Single-Server Private Network**
Create a network that does not leave each XenServer host. This can be used as a private connection between VMs on the same host.
- Cross-Server Private Network**
Create a network that does not leave the XenServer pool. This can be used as a private connection between VMs in the pool. This type of network requires the vSwitch Controller to be running.
- Bonded Network**
Create a network that bonds together two or more of your NICs. This will create a single higher performing channel.

New Network - xcp00

Enter a name and description for the new network

Select Type

Name

Network settings

Provide a name and optional description for the new network.

Name:

Description:

New Network - xcp00

Configure the new network

Select Type

Name

Network settings

Your new network will be mapped to an existing physical network interface and assigned a VLAN number to use on that interface. You can select the physical interface you would like to use below.

NIC:

VLAN:

MTU:

Automatically add this network to new virtual machines

xcp00 Logged in as: Local root account

Search | General | Memory | Storage | **Networking** | NICs | Console | Performance | Users | Logs

Server Networks

Networks

Name	Description	NIC	VLAN	Auto	Link Status	MAC	MTU
VLAN Proba		NIC 0	13	No	Connected	-	1500
Xestón		NIC 0	-	Yes	Connected	08:00:27:a8:96:d6	1500
Network 1		NIC 1	-	Yes	Connected	08:00:27:6b:92:d7	1500

Add Network... Properties Remove

xcp00 Logged in as: Local root account

Search | General | Memory | Storage | **Networking** | NICs | Console | Performance | Users | Logs

Server Networks

Networks

Name	Description	NIC	VLAN	Auto	Link Status	MAC	MTU
VLAN Proba		NIC 0	13	No	Connected	-	1500
Xestón		NIC 0	-	Yes	Connected	08:00:27:a8:96:d6	1500
Network 1		NIC 1	-	Yes	Connected	08:00:27:6b:92:d7	1500

Add Network... Properties Remove

xcp00 Logged in as: Local root account

Search | General | Memory | Storage | **Networking** | NICs | Console | Performance | Users | Logs

Server Networks

Networks

Name	Description	NIC	VLAN	Auto	Link Status	MAC	MTU
Xestón		NIC 0	-	Yes	Connected	08:00:27:a8:96:d6	1500
Trafico Mvs		NIC 1	-	Yes	Connected	08:00:27:6b:92:d7	1500

Add Network... Properties Remove

Views: Server View

dMySQL on 'xcp00'

General Memory Storage Networking Console Perform

Virtual Network Interfaces

Search...

XenCenter

- xcp00
 - dbase-recén-instalada
 - dMySQL
 - ds2go
 - CIFS Imaxes ISO
 - DVD drives
 - Local storage

Device	MAC	Limit	Network
0	ca:58:ba:af:33:26		Xestión

Networks

Device	MAC	Limit	Network	IP Address
0	ca:58:ba:af:33:26		Xestión	fe80::c858:baff:feaf:3326, 10.42.0.79

Add Interface... Properties Remove Deactivate

Virtual Interface Properties

Select your network and MAC address for this virtual interface. You can also optionally define a QoS limit.

Network: Xestión
 Tráfico MVs
 Xestión

MAC address: ca:58:ba:af:33:26

Auto-generate a MAC address

Use this MAC address: ca:58:ba:af:33:26

QoS settings:

Enable a QoS limit of: Kbytes/s

OK Cancel

dMySQL on 'xcp00'

General Memory Storage Networking Console Performance Snapshots Logs

Virtual Network Interfaces

Networks

Device	MAC	Limit	Network	IP Address
0	ca:58:ba:af:33:26		Tráfico MVs	fe80::c858:baff:feaf:3326, 10.42.0.79

```

root@dnysql:~# ifconfig eth0
eth0      Link encap:Ethernet  HWaddr ca:58:ba:af:33:26
          inet addr:10.42.0.79  Bcast:10.42.0.255  Mask:255.255.255.0
          inet6 addr: fe00::c050:baff:feaf:3326/64  Scope:Link
          UP BROADCAST RUNNING MULTICAST  MTU:1500  Metric:1
          RX packets:104  errors:0  dropped:0  overruns:0  frame:0
          TX packets:40  errors:0  dropped:0  overruns:0  carrier:0
          collisions:0  txqueuelen:1000
          RX bytes:7236 (7.0 KiB)  TX bytes:3020 (2.9 KiB)
          Interrupt:9

root@dnysql:~#
root@dnysql:~# ping 8.8.8.8
PING 8.8.8.8 (8.8.8.8) 56(84) bytes of data:
64 bytes from 8.8.8.8: icmp_req=1 ttl=47 time=76.5 ms
64 bytes from 8.8.8.8: icmp_req=2 ttl=47 time=78.6 ms
^C
--- 8.8.8.8 ping statistics ---
2 packets transmitted, 2 received, 0% packet loss, time 1003ms
rtt min/avg/max/mdev = 76.553/77.616/78.600/1.099 ms
root@dnysql:~#

```

Server Networks

Name	Description	NIC	VLAN	Auto	Link Status
Xestión		NIC 0	-	Yes	Connected
Tráfico IPv6		NIC 1	-	Yes	Connected

Add Network... Properties Remove

Choose the type of network to create

Select Type

Select the type of new network you would like to create:

- External Network
Create a network that passes traffic over one of your VLANs.
- Single-Server Private Network**
Create a network that does not leave each XenServer host.
This can be used as a private connection between VMs on the same host.
- Cross-Server Private Network
Create a network that does not leave the XenServer pool.
This can be used as a private connection between VMs in the pool.
This type of network requires the vSwitch Controller to be running.
- Bonded Network
Create a network that bonds together two or more of your NICs.
This will create a single higher performing channel.

Enter a name and description for the new network

Select Type

Provide a name and optional description for the new network.

Name

Network settings

Name: Rede Interna (switch interno 1)

Description:

Configure the new network

Select Type

Name

Network settings

Check the box below if you would like to automatically add this network to new VMs.

Automatically add this network to new virtual machines

xcp00

Search General Memory Storage **Networking** NICs Console Perform

Server Networks

Networks

Name	Description	NIC	VLAN
Rede Interna (switch interno 1)			-
Xestión		NIC 0	-
Tráfico MVs		NIC 1	-

Add Network... Properties Remove

Search...

- XenCenter
 - xcp00
 - dbase-recén-instalada
 - dMySQL
 - dx2go
 - CIFS Imaxes ISO
 - DVD drives
 - Local storage
 - Removable storage
 - dbase**
 - xcpA

New VM

Name the new virtual machine

Template

- Name**
- Installation Media
- Home Server
- CPU & Memory
- Storage
- Networking
- Finish

Enter a name that will help you to identify software and hardware such as RHEL Server. This name will also be displayed in the XenCenter console.

You can also add a more detailed description.

Name:

Description:

New VM

Allocate processor and memory resources

Specify the number of virtual CPUs and the amount of virtual machine memory.

Template: _____
 Name: _____
 Installation Media: _____
 Home Server: _____
CPU & Memory
 Storage: _____
 Networking: _____

Number of vCPUs:
 Memory: MB

New VM

Configure networking on the new VM

The virtual machine template you have selected. You can configure or delete the default virtual network interface.

Virtual network interfaces on drouter

MAC	Network
<autogenerated MAC>	Xestión

Template: _____
 Name: _____
 Installation Media: _____
 Home Server: _____
 CPU & Memory: _____
 Storage: _____
Networking
 Finish: _____

Virtual network interfaces on dbase (1)

MAC	Network
<autogenerated MAC>	Tráfico MVs
<autogenerated MAC>	Rede Interna (switch interno 1)

router on 'xcp00'

General | Memory | Storage | **Networking** | Console | Performance | Snapshot

Virtual Network Interfaces

Networks

Device	MAC	Limit	Network
0	9e:84:d0:bc:55:e0		Tráfico MVs
1	b6:e0:60:8c:46:78		Rede Interna (switch interno 1)

dx2go on 'xcp00'

General Memory Storage Networking Console Performance Snapsho

Virtual Network Interfaces

Networks

Device	MAC	Limit	Network
0	d2:2e:37:db:88:96		Rede Interna (switch interno 1)

```
GNU nano 2.2.4 File: /etc/network/interfaces
# This file describes the network interfaces available on your system
# and how to activate them. For more information, see interfaces(5).

# The loopback network interface
auto lo
iface lo inet loopback

# The primary network interface
allow-hotplug eth0
iface eth0 inet dhcp

allow-hotplug eth1
iface eth1 inet static
    address 192.168.13.1
    netmask 255.255.255.0
```

```
root@router:~# ifup eth1
root@router:~#
root@router:~# ifconfig
eth0    Link encap:Ethernet  HWaddr 9e:04:d0:bc:55:e0
        inet addr:10.42.0.66  Bcast:10.42.0.255  Mask:255.255.255.0
        inet6 addr: fe80::9e04:d0ff:febc:55e0/64 Scope:Link
        UP BROADCAST RUNNING MULTICAST  MTU:1500  Metric:1
        RX packets:206 errors:0 dropped:0 overruns:0 frame:0
        TX packets:70 errors:0 dropped:0 overruns:0 carrier:0
        collisions:0 txqueuelen:1000
        RX bytes:13364 (13.0 KiB)  TX bytes:4960 (4.8 KiB)
        Interrupt:7

eth1    Link encap:Ethernet  HWaddr b6:e0:60:8c:46:78
        inet addr:192.168.13.1  Bcast:192.168.13.255  Mask:255.255.255.0
        inet6 addr: fe80::b4e0:60ff:fe0c:4678/64 Scope:Link
        UP BROADCAST RUNNING MULTICAST  MTU:1500  Metric:1
        RX packets:0 errors:0 dropped:0 overruns:0 frame:0
        TX packets:12 errors:0 dropped:0 overruns:0 carrier:0
        collisions:0 txqueuelen:1000
        RX bytes:0 (0.0 B)  TX bytes:900 (900.0 B)
        Interrupt:9

lo      Link encap:Local Loopback
```

```
root@router:~# route -n
Kernel IP routing table
Destination Gateway Genmask Flags Metric Ref Use Iface
192.168.13.0 0.0.0.0 255.255.255.0 U 0 0 0 eth1
10.42.0.0 0.0.0.0 255.255.255.0 U 0 0 0 eth0
0.0.0.0 10.42.0.1 0.0.0.0 UG 0 0 0 eth0
root@router:~#
```

```
GNU nano 2.2.4 File: /etc/network/interfaces
# This file describes the network interfaces available
# and how to activate them. For more information, see i

# The loopback network interface
auto lo
iface lo inet loopback

# The primary network interface
allow-hotplug eth0
#NetworkManager
#iface eth0 inet dhcp

iface eth0 inet static
    address 192.168.13.2
    netmask 255.255.255.0
    gateway 192.168.13.1
```

```

root@dx2go:~# ifup eth0
root@dx2go:~#
root@dx2go:~# ifconfig
eth0      Link encap:Ethernet  HWaddr d2:7e:37:db:88:96
          inet addr:192.168.13.2  Bcast:192.168.13.255  Mask:255.255.255.0
          inet6 addr: fe80::d02e:37ff:fedb:8896/64  Scope:Link
          UP BROADCAST RUNNING MULTICAST  MTU:1500  Metric:1
          RX packets:1 errors:0 dropped:0 overruns:0 frame:0
          TX packets:47 errors:0 dropped:0 overruns:0 carrier:0
          collisions:0 txqueuelen:1000
          RX bytes:28 (28.0 B)  TX bytes:8497 (8.2 KiB)
          Interrupt:8

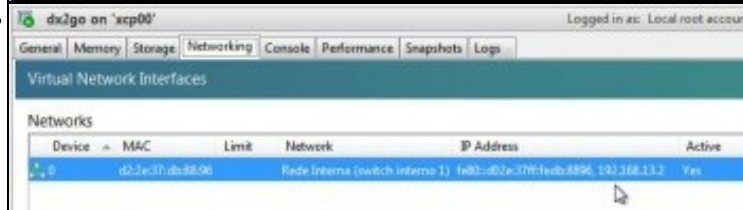
lo        Link encap:Local Loopback
          inet addr:127.0.0.1  Mask:255.0.0.0
          inet6 addr: ::1/128  Scope:Host
          UP LOOPBACK RUNNING  MTU:16436  Metric:1
          RX packets:8 errors:0 dropped:0 overruns:0 frame:0
          TX packets:8 errors:0 dropped:0 overruns:0 carrier:0
          collisions:0 txqueuelen:0
          RX bytes:560 (560.0 B)  TX bytes:560 (560.0 B)

```

```

root@dx2go:~# route -n
Kernel IP routing table
Destination     Gateway         Genmask         Flags Metric Ref    Use Iface
0.0.0.0         0.0.0.0        0.0.0.0         U         0     0      0 eth0
192.168.13.0   192.168.13.1  0.0.0.0         UG        0     0      0 eth0
root@dx2go:~#

```



```

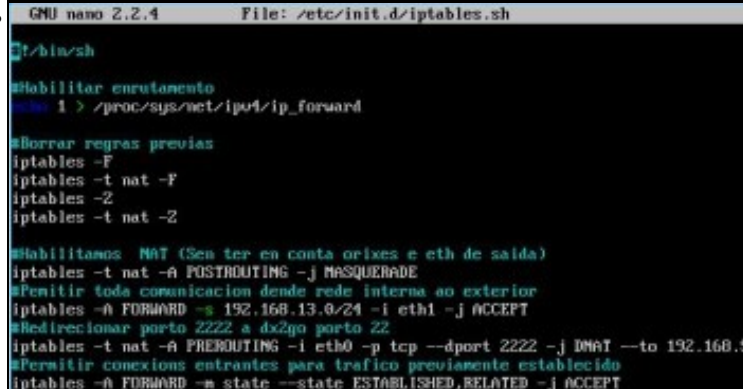
root@dx2go:~# route -n
Kernel IP routing table
Destination     Gateway         Genmask         Flags Metric Ref    Use Iface
0.0.0.0         0.0.0.0        0.0.0.0         U         0     0      0 eth0
192.168.13.0   192.168.13.1  0.0.0.0         UG        0     0      0 eth0
root@dx2go:~#
root@dx2go:~# ping 192.168.13.1
PING 192.168.13.1 (192.168.13.1) 56(84) bytes of data:
64 bytes from 192.168.13.1: icmp_req=1 ttl=64 time=6.78 ms
64 bytes from 192.168.13.1: icmp_req=2 ttl=64 time=8.25 ms
^C
--- 192.168.13.1 ping statistics ---
2 packets transmitted, 2 received, 0% packet loss, time 1004ms
rtt min/avg/max/mdev = 6.787/7.519/8.251/0.732 ms
root@dx2go:~#
root@dx2go:~# ping 8.8.8.8
PING 8.8.8.8 (8.8.8.8) 56(84) bytes of data:
^C
--- 8.8.8.8 ping statistics ---
2 packets transmitted, 0 received, 100% packet loss, time 1002ms
root@dx2go:~#

```

```

root@router:~# nano /etc/init.d/iptables.sh

```



```
root@router:~# chmod +x /etc/init.d/iptables.sh
root@router:~#
root@router:~# update-rc.d iptables.sh defaults
update-rc.d: using dependency based boot sequencing
inserv: warning: script 'iptables.sh' missing LSB tags and overrides
root@dx2go:~# ping 8.8.8.8
PING 8.8.8.8 (8.8.8.8) 56(84) bytes of data.
^C
--- 8.8.8.8 ping statistics ---
2 packets transmitted, 0 received, 100% packet loss, time 1002ms

root@dx2go:~# ping 8.8.8.8
PING 8.8.8.8 (8.8.8.8) 56(84) bytes of data.
64 bytes from 8.8.8.8: icmp_req=1 ttl=46 time=113 ms
64 bytes from 8.8.8.8: icmp_req=2 ttl=46 time=81.6 ms
64 bytes from 8.8.8.8: icmp_req=3 ttl=46 time=97.9 ms
64 bytes from 8.8.8.8: icmp_req=4 ttl=46 time=86.1 ms
^C
--- 8.8.8.8 ping statistics ---
4 packets transmitted, 4 received, 0% packet loss, time 3014ms
rtt min/avg/max/mdev = 81.604/94.706/113.319/12.245 ms
root@dx2go:~#
```

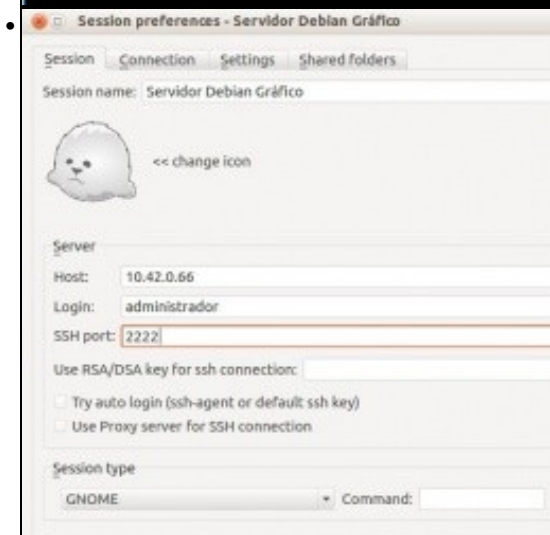
```
administrador@base:~$ ssh root@10.42.0.66 -p 2222
The authenticity of host '[10.42.0.66]:2222 ([10.42.0.66]:2222)' can't be established.
RSA key fingerprint is 09:82:db:12:b0:9e:98:bb:ed:e5:d3:3c:c7:a7:35:5e.
Are you sure you want to continue connecting (yes/no)? yes
Warning: Permanently added '[10.42.0.66]:2222' (RSA) to the list of known hosts.
root@10.42.0.66's password:
Linux dx2go 2.6.32-5-and64 #1 SMP Mon Feb 25 00:26:11 UTC 2013 x86_64

The programs included with the Debian GNU/Linux system are free software;
the exact distribution terms for each program are described in the
individual files in /usr/share/doc/*/copyright.

Debian GNU/Linux comes with ABSOLUTELY NO WARRANTY, to the extent
permitted by applicable law.
Last login: Sat May 25 22:10:32 2013
root@dx2go:~#
```

```
root@router:~# ifconfig
eth0      Link encap:Ethernet  HWaddr 9e:84:d0:bc:55:e9
          inet addr:10.42.0.66  Bcast:10.42.0.255  Mask:255.255.255.0
          inet6 addr: fe80::9c84:d0ff:febc:55e0/64 Scope:Link
          UP BROADCAST RUNNING MULTICAST  MTU:1500  Metric:1
          RX packets:2455 errors:0 dropped:0 overruns:0 frame:0
          TX packets:610 errors:0 dropped:0 overruns:0 carrier:0
          collisions:0 txqueuelen:1000
          RX bytes:167962 (164.0 KIB)  TX bytes:43262 (42.1 KIB)
          Interrupt:8

eth1      Link encap:Ethernet  HWaddr b6:e0:60:8c:46:78
          inet addr:192.168.13.1  Bcast:192.168.13.255  Mask:255.255.255.0
          inet6 addr: fe80::b4e0:60ff:fe8c:4678/64 Scope:Link
          UP BROADCAST RUNNING MULTICAST  MTU:1500  Metric:1
          RX packets:49 errors:0 dropped:0 overruns:0 frame:0
          TX packets:54 errors:0 dropped:0 overruns:0 carrier:0
          collisions:0 txqueuelen:1000
          RX bytes:5741 (5.6 KIB)  TX bytes:6894 (6.7 KIB)
          Interrupt:9
```



```

x - o Servidor Debian Gráfico
Applications Places System
administrador@dx2go:~$ traceroute 10.42.0.1
traceroute to 10.42.0.1 (10.42.0.1), 30 hops max, 60 byte packets
 1 192.168.13.1 (192.168.13.1) 5.603 ms 5.573 ms 5.389 ms
 2 10.42.0.1 (10.42.0.1) 12.081 ms 11.599 ms 11.449 ms
administrador@dx2go:~$

```

```

[root@xcp00 ~]# xe network-list
uid ( RO) : 6b2601b2-1b36-c947-3d8b-4aac7b508620
name-label ( RW): Rede Interna (switch interno 1)
name-description ( RW):
bridge ( RO): xapi0

uid ( RO) : 78c7ee0b-ea07-ac27-7075-3444cd01e960
name-label ( RW): Tráfico M9s
name-description ( RW):
bridge ( RO): xenbr1

uid ( RO) : 762b319c-c2dd-3eb5-dc2c-c16a2777a4fd
name-label ( RW): Host internal management network
name-description ( RW): Network on which guests will be assigned a private
link-local IP address which can be used to talk XenAPI
bridge ( RO): xenapi

uid ( RO) : Bee98d45-22c1-066d-07a9-3ca3eb595594
name-label ( RW): Xestión
name-description ( RW):
bridge ( RO): xenbr0

```

```

[root@xcp00 ~]# xe network-param-list uuid=9a5b259c-7abd-7f86-1032-cd516b8984ed
uid ( RO) : 9a5b259c-7abd-7f86-1032-cd516b8984ed
name-label ( RW): Rede Interna (switch interno 1)
name-description ( RW):
VIF-uuids ( SRU): ee2cf8fa-66c1-8b21-1d78-c64d2a6480f9; 4517b4fe-c
d23-6c5c-3deb-76a2b1a22e91
PIF-uuids ( SRU):
MTU ( RW): 1500
bridge ( RO): xapi3
other-config ( MRW): automatic: false
blobs ( RO):
tags ( SRU):
default-locking-mode ( RW): unlocked

```

```

[root@xcp00 ~]# xe network-list
uid ( RO) : 78c7ee0b-ea07-ac27-7075-3444cd01e960
name-label ( RW): Pool-wide network associated with eth1
name-description ( RW):
bridge ( RO): xenbr1

uid ( RO) : 762b319c-c2dd-3eb5-dc2c-c16a2777a4fd
name-label ( RW): Host internal management network
name-description ( RW): Network on which guests will be assigned a private
link-local IP address which can be used to talk XenAPI
bridge ( RO): xenapi

uid ( RO) : Bee98d45-22c1-066d-07a9-3ca3eb595594
name-label ( RW): Xestión
name-description ( RW):
bridge ( RO): xenbr0

```

```

[root@xcp00 ~]# xe network-param-list uuid=Bee98d45-22c1-066d-07a9-3ca3eb595594
uid ( RO) : Bee98d45-22c1-066d-07a9-3ca3eb595594
name-label ( RW): Xestión
name-description ( RW):
VIF-uuids ( SRU): 51a57837-0d2e-cc32-78d1-08e644f4ecfc; e2be909a-0
15e-2dc6-c1ac-c494b3d0638e; 2f78f1a2-3f1a-76c8-d4b3-722e4d72b0f; ca749b6e-01b6-
a6e7-35e3-aa2197e7c8e2; 47d020e5-4529-513d-166b-9f94b2201f33; 83246c69-17a5-de0d
-0109-bcfead5d488e; 7f99b552-49a8-4367-e4db-f421189aa0bd
PIF-uuids ( SRU): be0132be-3306-dce1-9276-09e9abb837dd
MTU ( RW): 1500
bridge ( RO): xenbr0
other-config ( MRW):
blobs ( RO):
tags ( SRU):
default-locking-mode ( RW): unlocked

```

General Memory Storage Networking Console Performance Snapshots Logs

Virtual Network Interfaces

Device	MAC	Limit	Network	IP Address	Active
xapi0	9e84e8bc55e0		Network 1	fe80:9a84:e8bc:55e0::	Yes
xenbr1	b6a6008c4678		Rede Interna (switch interno 1)	192.168.13.1, fe80:b6a6008c4678::	Yes

dx2go on 'xcp00' Logged in as: Local root user

General Memory Storage Networking Console Performance Snapshots Logs

Virtual Network Interfaces

Device	MAC	Limit	Network	IP Address	Active
xapi3	d02ce37d6b8096		Rede Interna (switch interno 1)	fe80:d02ce37d6b8096::	Yes

drouter on 'xcp00' Logged in

General Memory Storage Networking Console Performance Snapshots Logs

Virtual Network Interfaces

Networks

Device	MAC	Limit	Network	IP Address
0	9c:84:d0:bc:35:a0		Xestión	fe80:9c84:d0f1f6bc:35a0, 10.42.0.66
1	b6:a0:60:8c:46:78		Rede Interna (switch interno 1)	192.168.13.1, fe80:b4a0:60fffa8c:4678

```

GNU nano 2.2.4 File: /etc/network/interfaces

# This file describes the network setup for the system
# and how to activate them. For more information, see
# the file /usr/share/doc/network-base/README.Debian

# The loopback network interface
auto lo
iface lo inet loopback

# The primary network interface
allow-hotplug eth0
NetworkManager
iface eth0 inet dhcp

# Secondary network interface
iface eth0 inet static
#     address 192.168.13.2
#     netmask 255.255.255.0
#     gateway 192.168.13.1
  
```

dx2go on 'xcp00' Logged in

General Memory Storage Networking Console Performance Snapshots Logs

Virtual Network Interfaces

Networks

Device	MAC	Limit	Network	IP Address
0	d2:2e:37:db:88:96		Xestión	fe80:d02e:37fffedb:8896, 192.168.13.2

xcp00 - Configuración

General Sistema Pantalla Almacenamiento Audio Red Puertos serie USB Carpetas compartidas

Red

Adaptador 1 Adaptador 2 Adaptador 3 Adaptador 4

Habilitar adaptador de red

Conectado a: Red interna

Nombre: inet

Avanzadas

Tipo de adaptador: Intel PRQ/1000 MT Desktop (82540EM)

Modo promiscuo: Permitir todo

Dirección MAC: 080027E32142

Cable conectado

Reenvío de puertos

xcp00 Logged in as: Local root account

Search General Memory Storage Networking NICs Console Performance Users Logs

Network Interface Cards

Interfaces

NIC	MAC	Link Status	Speed	Duplex	Vendor	Device
NIC 1	08:00:27:8b:92:d7	Connected	1000 Mbit/s	Full	Intel Corporation	82540EM Gigabit Ethernet Controller
NIC 0	08:00:27:a8:96:a6	Connected	1000 Mbit/s	Full	Intel Corporation	82540EM Gigabit Ethernet Controller

Create Bond... Delete Bond Rescan

xcp00 Logged in as: Local root account

Search | General | Memory | Storage | Networking | NICs | Console | Performance | Users | Logs

Network Interface Cards

Interfaces

NIC	MAC	Link Status	Speed	Duplex	Vendor	Device
NIC 2	08:00:27:e3:21:42	Disconnected	-	-	-	-
NIC 1	08:00:27:6b:92:d7	Connected	1000 Mbit/s	Full	Intel Corporation	82540EM Gigabit Ethernet Cont
NIC 0	08:00:27:a8:96:f6	Connected	1000 Mbit/s	Full	Intel Corporation	82540EM Gigabit Ethernet Cont

```
[root@xcp00 ~]# xe pif-list
uuid ( RO)                : 78aea93e-11db-f2a8-717f-ec674596945d
  device ( RO)             : eth1
  currently-attached ( RO) : true
  ULAN ( RO)               : -1
  network-uuid ( RO)      : 78c7ee0b-ea07-ac27-7075-3444cd01e960

uuid ( RO)                : 5768a791-4396-8d74-3da4-75c67091aa63
  device ( RO)             : eth2
  currently-attached ( RO) : false
  ULAN ( RO)               : -1
  network-uuid ( RO)      : 236e4acb-ca10-0b74-637a-0df13bdd3cea

uuid ( RO)                : be8132be-3306-dce1-9276-09e9abb837dd
  device ( RO)             : eth0
  currently-attached ( RO) : true
  ULAN ( RO)               : -1
  network-uuid ( RO)      : Bee98d45-22c1-066d-07a9-3ca3eb595594

[root@xcp00 ~]#
```

xcp00 Logged in as: Local root account

Search | General | Memory | Storage | Networking | NICs | Console | Performance | Users | Logs

Server Networks

Networks

Name	Description	NIC	VLAN	Auto	Link Status	MAC	MTU
Rede Interna (switch interno 1)		-	-	No	-	-	1500
Xestión		NIC 0	-	Yes	Connected	08:00:27:a8:96:f6	1500
Trafico MIs		NIC 1	-	Yes	Connected	08:00:27:6b:92:d7	1500
Network 2		NIC 2	-	Yes	Disconnected	08:00:27:e3:21:42	1500

Add Network... Properties Remove

```
[root@xcp00 ~]# xe pif-plug uuid=5768a791-4396-8d74-3da4-75c67091aa63
[root@xcp00 ~]#
```

xcp00

Search | General | Memory | Storage | Networking | NICs | Console | Performance | Users

Network Interface Cards

Interfaces

NIC	MAC	Link Status	Speed	Duplex	Vendor
NIC 2	08:00:27:e3:21:42	Connected	1000 Mbit/s	Full	Intel Corporation
NIC 1	08:00:27:6b:92:d7	Connected	1000 Mbit/s	Full	Intel Corporation
NIC 0	08:00:27:a8:96:f6	Connected	1000 Mbit/s	Full	Intel Corporation

xcp00 Logged in as: Local root account

Search | General | Memory | Storage | Networking | NICs | Console | Performance | Users | Logs

Server Networks

Networks

Name	Description	NIC	VLAN	Auto	Link Status	MAC	MTU
Rede Interna (switch interno 1)		-	-	No	-	-	1500
Xestión		NIC 0	-	Yes	Connected	08:00:27:a8:96:f6	1500
Trafico MIs		NIC 1	-	Yes	Connected	08:00:27:6b:92:d7	1500
Network 2		NIC 2	-	Yes	Connected	08:00:27:e3:21:42	1500

Add Network... Properties Remove

Logged in as: Local root account

Search | General | Memory | Storage | Networking | NICs | Console | Performance | Users | Logs

Server Networks

Networks

Name	Description	NIC	VLAN	Auto	Link Status	MAC	MTU
Rede Interna (switch interno 1)		-	-	No	-	-	1500
Xestión		NIC 0	-	Yes	Connected	08:00:27:a8:96:f5	1500
Tráfico MVS		NIC 1	-	Yes	Connected	08:00:27:6b:92:d7	1500
Almacenamiento		NIC 2	-	Yes	Connected	08:00:27:e3:21:42	1500

Add Network... Properties Remove

Search...

XenCenter

- xcp00
- xcpA

Search | General | Memory | Storage | Netw

Server Networks

Networks

Name	Description
Network 0	

Add Network... Properties

IP Address Configuration

Server	Interface	Network
xcpA	Management	Network 0

Configure...

Management
Network 0; Static

Add IP address

Management Interface

Network: Network 0

IP address and DNS server settings:

Automatically obtain settings using DHCP

Use these settings:

IP address: 10.42.0.150

Subnet mask: 255.255.255.0

Gateway: 10.42.0.1

Preferred DNS server: 10.42.0.1

Alternate DNS server 1:

Alternate DNS server 2:

Cambiar Permisos

Cambiar los permisos de /mnt/xen/ISOs a:

Propietario (usuario): hoar

Propietario (grupo): nobody

Modo

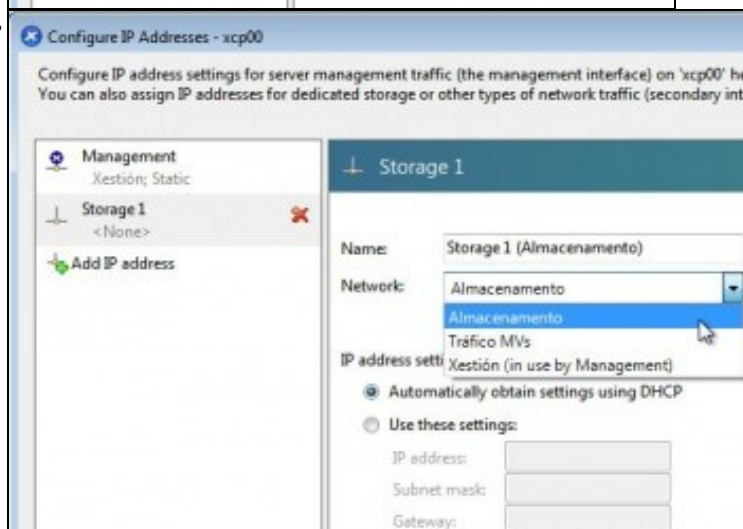
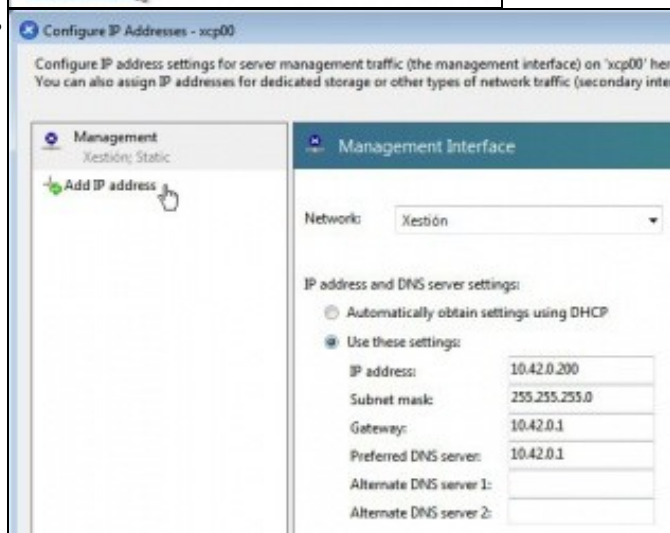
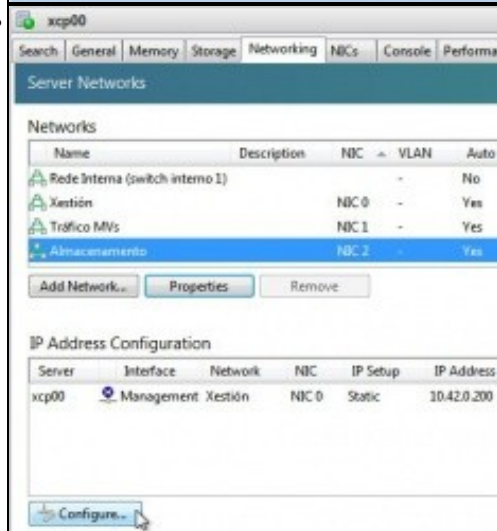
	Owner	Group	Other
Read	<input checked="" type="checkbox"/>	<input checked="" type="checkbox"/>	<input checked="" type="checkbox"/>
Write	<input checked="" type="checkbox"/>	<input type="checkbox"/>	<input type="checkbox"/>
Execute	<input checked="" type="checkbox"/>	<input checked="" type="checkbox"/>	<input checked="" type="checkbox"/>

Tipo de permiso ACL

- Unix
- Windows

Establecer los permisos recursivamente

Cambiar Cancelar



Configure IP Addresses - xcp00

Configure IP address settings for server management traffic (the management interface) on 'xcp00' here. You can also assign IP addresses for dedicated storage or other types of network traffic (secondary interfaces).

Management
Xestión; Static

Storage 1 (Almacenamento)
Almacenamento; Static

+ Add IP address

Storage 1 (Almacenamento)

Name: Storage 1 (Almacenamento)

Network: Almacenamento

IP address settings:

Automatically obtain settings using DHCP

Use these settings:

IP address: 172.16.0.200

Subnet mask: 255.255.255.0

Gateway:

xcp00 Logged in as: Local root account

Search | General | Memory | Storage | Networking | NICs | Console | Performance | Users | Logs

Server Networks

Networks

Name	Description	NIC	VLAN	Auto	Link Status	MAC	MTU
Rede Interna (switch interno 1)			-	No	-	-	1500
Xestión		NIC 0	-	Yes	Connected	08:00:27:a6:96:a6	1500
Trafico MWs		NIC 1	-	Yes	Connected	08:00:27:6b:82:d7	1500
Almacenamento		NIC 2	-	Yes	Connected	08:00:27:a3:21:42	1500

Buttons: Add Network... Properties Remove

IP Address Configuration

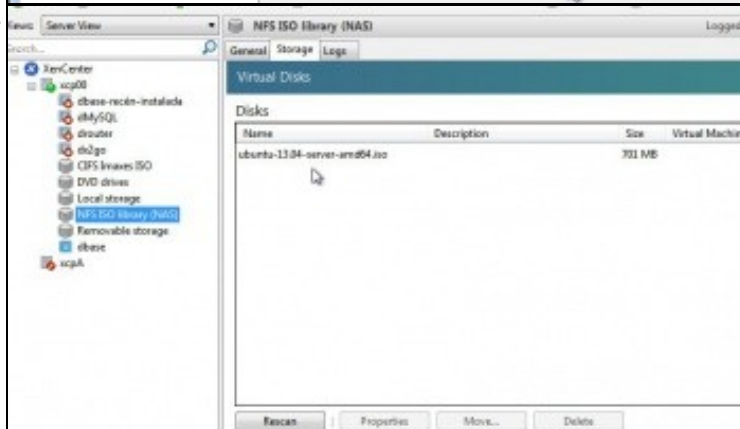
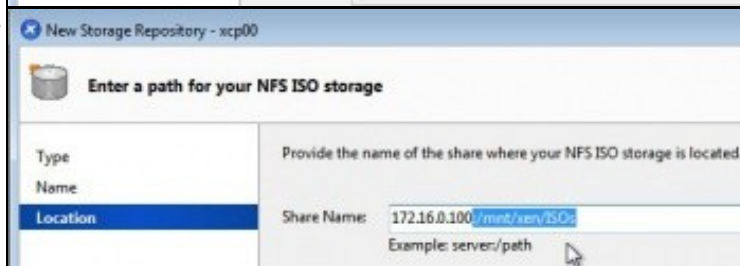
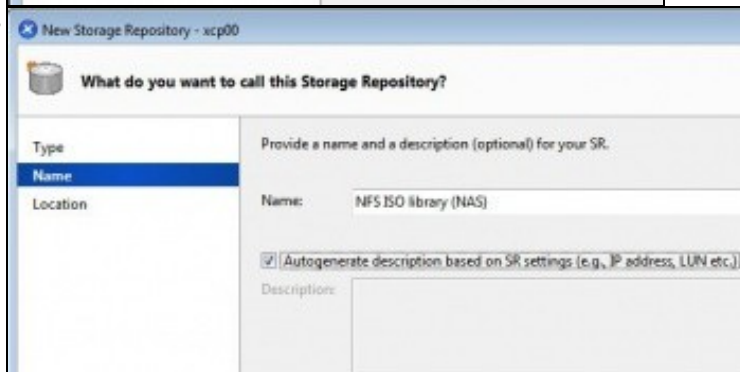
Server	Interface	Network	NIC	IP Setup	IP Address	Subnet mask	Gateway
xcp00	Management	Xestión	NIC 0	Static	10.42.0.200	255.255.255.0	10.42.0.1
xcp00	Storage 1 (Almacenamento)	Almacenamento	NIC 2	Static	172.16.0.200	255.255.255.0	

Views: Server View

Search...

XenCenter

- xcp00
 - New VM...
 - New SR...
 - Import...
 - Add to Pool
 - Enter Maintenance Mode...
 - Reboot
 - Shut Down
 - Disconnect
 - Reconnect As...
 - Properties



Views: Server View

Search...

- XenCenter
 - xcp00
 - dbase-recén-instalada
 - dMySQL
 - drouter
 - dx2go
 - DVD drives
 - Imaxes ISO (NAS / NFS)
 - Imaxes ISO (PC / CIFS)**
 - Local storage
 - Removable storage
 - dbase