



QuickTime  
Streaming Server  
Darwin  
Streaming Server

# Administrator's Guide

 **Apple Computer, Inc.**

© 2002 Apple Computer, Inc. All rights reserved.

The owner or authorized user of a valid copy of QuickTime Streaming Server and Darwin Streaming Server software may reproduce this publication for the purpose of learning to use such software. No part of this publication may be reproduced or transmitted for commercial purposes, such as selling copies of this publication or for providing paid-for support services.

The Apple logo is a trademark of Apple Computer, Inc., registered in the U.S. and other countries. Use of the “keyboard” Apple logo (Option-Shift-K) for commercial purposes without the prior written consent of Apple may constitute trademark infringement and unfair competition in violation of federal and state laws.

Apple, the Apple logo, AppleScript, AppleShare, AppleTalk, ColorSync, FireWire, Keychain, Mac, Macintosh, Power Macintosh, QuickTime, Sherlock, and WebObjects are trademarks of Apple Computer, Inc., registered in the U.S. and other countries. AirPort, Extensions Manager, Finder, iMac, and Power Mac are trademarks of Apple Computer, Inc.

Adobe and PostScript are trademarks of Adobe Systems Incorporated.

Java and all Java-based trademarks and logos are trademarks or registered trademarks of Sun Microsystems, Inc. in the U.S. and other countries.

Netscape Navigator is a trademark of Netscape Communications Corporation.

RealAudio is a trademark of Progressive Networks, Inc.

© 1995–2001 The Apache Group. All rights reserved.

UNIX is a registered trademark in the United States and other countries, licensed exclusively through X/Open Company, Ltd.

022-0329/11-20-02



# Contents

## **Preface**

### **QuickTime Streaming 7**

What Is Streaming?	7
About Streaming Servers	7
Live Versus On-Demand Delivery	8
Simple Setup for Live Video	8
How Does Streaming Work?	9
Multicast Versus Unicast	10
Relaying Streamed Media	11
The Total Streaming Solution	11
The QuickTime Suite	12
More About QTSS and DSS	12
For More Information	13

## **1 Getting Started 15**

Setup Overview	15
Hardware and Software	16
Client Computer Requirements	16
Server Requirements	17
Live Broadcasting Requirements	17
Setting Up Your Streaming Server	18
Testing Your Setup	19

## **2 Managing Your Streaming Server 21**

User Interface	21
Working With Streaming Server Admin	21

Viewing Streaming Status	22
Starting or Stopping Streaming Service	22
Working With Connected Users	22
Changing Server Settings	23
Controlling QuickTime Broadcaster Remotely	23
Working With General Settings	24
Working With Port Settings	25
Working With Log Settings	25
Viewing Error Logs and Access History	26
Media	27
About Instant-On Streaming	27
Preparing Prerecorded Media	27
Preparing Audio	28
Streaming Media Files With Multiple Sources	28
Streaming File Formats Like .avi, .text, and .wav	28
Exporting a QuickTime Movie as a Hinted Movie	29
Improving the Performance of Hinted Movies	30
Session Description Protocol (SDP) Files	30
Streaming Live Media	31
Viewing Streamed Media From a Client Computer	31
Setting Up a Web Page With Streamed Media	32
Creating Links to MP3 Playlists	33
Bandwidth Considerations	33
Playlists	34
Using Playlists to Broadcast Prerecorded Media	34
Working With Playlist Settings	34
Starting and Stopping Playlists	35
Creating a Playlist	35
Changing a Playlist	36
Deleting a Playlist	36
Relays	37
Working With Relay Settings	37
Setting Up Relays	38
Turning a Relay On or Off	39

Security	39
Resetting the Streaming Server Admin User Name and Password	39
Controlling Access to Streamed Media	40
Creating an Access File	40
What Clients Need to Access Protected Media	42
Adding User Accounts and Passwords	42
Adding or Deleting Groups	42
Making Changes to the User or Group File	42
Installing SSL	43
Using Automatic Unicast (Announce) With QTSS or DSS on a Separate Computer	43
Executing a Command With sudo	44
Streaming on Port 80	45
Firewalls and Networks With Address Translation	45
Problems	45
Streaming Server Admin Is Not Responding	46
The Server Doesn't Start Up or Quits Unexpectedly	46
The Streaming Server Computer Crashes or Is Restarted	46
Media Files Do Not Stream Properly	46
Streaming Performance Seems Slow	47
Users Can't Connect to Your Broadcast	47
Users See Error Messages While Streaming Media	47
Users Can't See Live Streamed Media	48
You're Having Problems With Playlists	48
Advanced	49
How do I bind the Streaming Server Admin computer to a single IP address if my machine is multihomed?	49
How do I bind QTSS or DSS to a single IP address if my machine is multihomed?	50
How do I kill and restart the QuickTime Streaming Server processes in Mac OS X Server?	51
How do I kill and restart Streaming Server Admin processes in Mac OS X Server?	51
How do I get QTSS to re-read its preferences without killing or restarting the server?	52
How do I configure QTSS to host streams from multiple user media directories?	52
<b>3 Setup Example</b>	<b>55</b>
Streaming Presentations—Live and On Demand	55

Setting It Up	57
Creating a Web Page for Easy Access	65
Shooting the Live Presentation	66
Archiving the Live Presentation	66
<b>Glossary</b>	<b>69</b>
<b>Index</b>	<b>77</b>

# QuickTime Streaming

The focus of this guide is QuickTime Streaming Server (QTSS) and Darwin Streaming Server (DSS). But before getting into the details of QTSS and DSS, it may be helpful to learn what streaming is all about and to get an overview of the total streaming solution provided by the QuickTime suite of products.

## What Is Streaming?

Streaming delivers media from a server over a network to a client in real time, from modem rates to broadband. No file is ever downloaded to a viewer's hard drive. Media is played by the client software as it is delivered.

With QuickTime streaming you can deliver

- broadcasts of live events in real time
- video on demand
- playlist broadcasts of prerecorded content

## About Streaming Servers

If you want to send streams to people over the Internet or a local network, you need a streaming server. Just as you need a web server for web pages, and a mail server for email messages, you need a streaming server to send real-time streams.

The streaming server transmits video and audio streams to individuals in response to requests from those individuals using client software such as QuickTime Player. The requests are handled using Real-Time Streaming Protocol (RTSP), a protocol for controlling a stream of real-time multimedia content. The streams are sent using Real-Time Transport Protocol (RTP), a transport protocol used for transmitting real-time multimedia content over networks. A streaming server can create streams from QuickTime movies stored on a disk. It can also send copies of any live streams to which it has access.

For small audiences, the same computer can run web server software, mail server software, and streaming server software. For larger audiences, one or more computers typically are dedicated to acting purely as streaming servers.

### Live Versus On-Demand Delivery

Delivery options for real-time streaming media are divided into two categories: live and on demand. You can serve both from QuickTime Streaming Server and from Darwin Streaming Server.

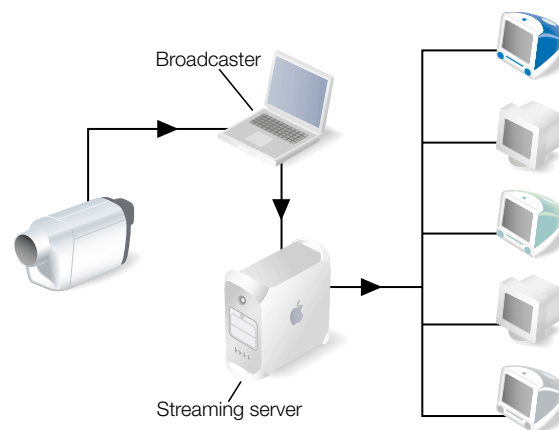
Live events, such as concerts, speeches, and lectures, are commonly streamed over the Internet as they happen with the assistance of broadcasting software, such as QuickTime Broadcaster. The broadcasting software encodes a live source, such as video from a camera, in real time and delivers the resulting stream to the server. The server then serves, or “reflects,” the live stream to clients.

Regardless of when different customers connect to the stream, each sees the same point in the stream at the same time. This live experience can be simulated with recorded content by broadcasting from an archive source such as a tape deck or creating playlists of media on the server.

For an on-demand delivery experience, such as a movie or an archived lecture, each customer initiates the stream from the beginning, so no customer ever comes in “late” to the stream. No broadcasting software is required in this case.

### Simple Setup for Live Video

The illustration below shows a setup for streaming live video and audio. (Most video cameras have a built-in microphone.) You can stream audio only using a microphone, mixer, and other appropriate audio equipment.





A PowerBook G4 with QuickTime Broadcaster software captures and encodes video and audio. The encoded signal is sent over an Internet Protocol (IP) network to a server computer running QTSS or DSS software. QTSS or DSS on the server computer sends the signal over the Internet or a local network to client computers that tune in using QuickTime Player.

You can also run QuickTime Broadcaster and QTSS or DSS on the same computer. If you are broadcasting to a large audience (more than, say, 100), however, Apple recommends that you run QuickTime Broadcaster and QTSS or DSS on separate computers.

## How Does Streaming Work?

When you watch and listen to cable or over-the-air media transmissions on television or radio, the cable or electromagnetic wavelengths used are dedicated to that transmission. Those transmissions are mostly uncompressed and so consume large amounts of transmission bandwidth. But that's not a problem, because they don't have to compete with other transmissions within the frequency over which they're broadcast.

When you send that same media over the Internet, the bandwidth used is no longer dedicated to only that transmission stream. The media now has to share extremely limited bandwidth with thousands, potentially millions, of other transmissions traveling back and forth over the Internet.

Multimedia sent over the Internet is therefore encoded and compressed for transmission. The resulting files are saved in a specific location, and streaming server software such as QuickTime Streaming Server or Darwin Streaming Server is used to send the media over the Internet to client computers.

Streamed media can be viewed by both Macintosh and Windows users using QuickTime Player (available free on the Apple web site) or any other application that supports QuickTime or standard MPEG-4 files. Streams can also be set up so that users can view them from within a web browser when the QuickTime plug-in is installed.

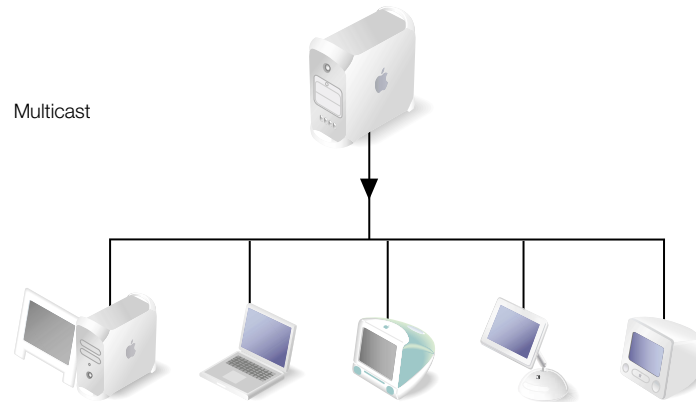
When a user starts to play streamed media through a web page, the QuickTime plug-in sends a request to the streaming server. The server responds by sending the multimedia content to the client computer.

The type of multimedia that is sent to the client computer depends on what content you specified on the web page. If you linked to a playlist created on the streaming server, that's sent. If you linked to a QuickTime movie in the specified media directory, that movie is sent. If you linked to a live broadcast, that's sent.

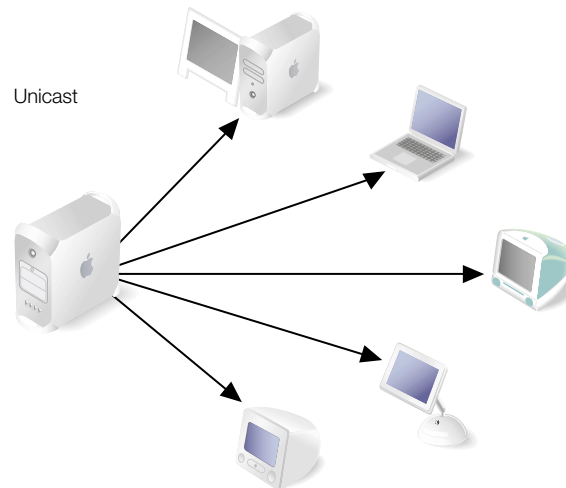
## Multicast Versus Unicast

QTSS and DSS support both multicast and unicast network transport to deliver streaming media.

In a multicast, a single stream is shared among the clients (see illustration). Each client “tunes in” to the stream much as a radio tunes in to an FM broadcast. Although this technique reduces network congestion, it does require a network that either has access to the multicast backbone, otherwise called the Mbone, for content generally distributed over the Internet, or is multicast enabled for content distributed within a contained private network.



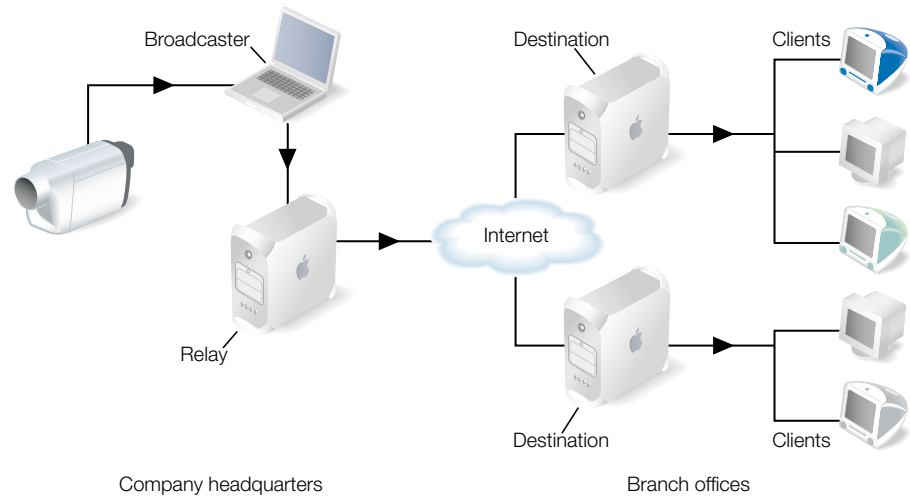
In a unicast, each client initiates its own stream, resulting in the generation of many one-to-one connections between client and server (see illustration). Many clients connected via unicast to a stream in a local network can result in heavy network traffic. But this technique is the most reliable for delivery over the Internet since no special transport support is required.



## Relaying Streamed Media

QuickTime Streaming Server or Darwin Streaming Server can be configured as a relay. A relay listens to an incoming stream and then forwards that stream to one or more destinations. A relay can reduce Internet bandwidth consumption. Relays can be useful in special broadcast situations, especially if numerous viewers in different locations want to tune in.

Large organizations can often make good use of relays. For example, if a company regularly broadcasts a quarterly presentation from the CEO, that broadcast can be relayed from headquarters to branch offices.



The CEO's presentation is captured live with a video camera. The audio and video from the camera are encoded using QuickTime Broadcaster on a Mac OS X computer. A Mac OS X Server computer with QuickTime Streaming Server software acts as the relay computer and relays the broadcast of the CEO's presentation over the Internet to destination computers serving the company's branch offices. Employees of the company using client computers tune in to the destination computers to hear and watch the CEO's presentation.

For more detailed information about setting up streamed media, see the appropriate topics in this manual.

## The Total Streaming Solution

The QuickTime suite of products is unique in that it provides the software you need for end-to-end production, transmission, and reception of streamed media. Each product is designed from start to finish for optimum compatibility with every other component in the suite.

## The QuickTime Suite

The QuickTime suite is made up of the following components:

**QuickTime Player:** The free QuickTime Player is an easy-to-use application for playing, interacting with, or viewing any video, audio, virtual reality (VR), or graphics file that is compatible with QuickTime.

**QuickTime Pro:** This powerful application, the “Pro” version of QuickTime Player, provides an abundance of media authoring capabilities. From simple slide shows to complex video and audio encoding, Media Skin creation, automation of repetitive production workflow tasks, and assembly of hundreds of different media types into one movie file, QuickTime Pro can do it all.

**QuickTime Broadcaster:** Combining the power of QuickTime with legendary Apple ease of use, QuickTime Broadcaster allows just about anyone to produce a live broadcast event. From a backyard birthday party to a corporate keynote speech, QuickTime Broadcaster allows anyone with an Internet connection to attend virtually. This free download, also included with Mac OS X Server version 10.2, will capture and encode QuickTime content, including MPEG-4, for live streaming via the web. QuickTime Broadcaster supports most codecs supported by QuickTime and allows users to create custom settings.

**QuickTime Streaming Server:** The open-source, standards-based QuickTime Streaming Server, included with Mac OS X Server version 10.2, delivers media either in real time or on demand over the Internet with no per-stream license fee.

**Darwin Streaming Server:** This free, open-source version of QuickTime Streaming Server supports popular enterprise platforms such as Linux, Solaris, and Windows NT/2000. It is available for download in source or binary form and can be ported to other platforms by modifying a few platform-specific source files.

## More About QTSS and DSS

QuickTime Streaming Server (QTSS) 4 and Darwin Streaming Server (DSS) 4 let you deliver media over the Internet in real time. Users can tune in to broadcasts of live or prerecorded media, or they can view prerecorded media on demand. Users see streamed media as soon as it reaches the computer; they don't have to wait to download files.

### Features of QTSS and DSS 4 include

- *Native MPEG-4 streaming:* Standard hinted MPEG-4 files can be served directly, without being converted to .mov files.
- *MP3 audio streaming:* You can create your own Internet radio station. Now serve MP3 files to clients that support MP3 streaming via HTTP, such as iTunes, WinAmp, and RealPlayer.
- *An even easier-to-use web-based admin:* You can benefit from a whole new design, plus new features such as a setup assistant and easy administration of relays between streaming servers.

- *Improved stream quality:* Enhancements to Apple skip-protection technology (patent pending)—a collection of quality-of-service features—result in even better stream quality.
- *Performance enhancements:* Overall stability and performance of the server has been improved.
- *Authentication:* Two types of authentication, digest and basic, let you control access to protected media.
- *Server-side playlists:* You can stream a set of media files as if it were a live broadcast. This can be ideal for creating and managing a virtual radio or television station.
- *Relay support:* You can easily set up several layers of servers to broadcast streams to a virtually unlimited number of clients.

**QTSS and DSS 4.1 added these features:**

- *Support for Instant-On:* Viewers with a broadband connection watching a streaming video with QuickTime 6 and later will benefit from Instant-On, an advance in Apple skip-protection technology (patent pending) that dramatically improves the viewing experience by playing video and audio streams instantaneously.
- *Integrated Broadcaster administration:* A new dialog linked from the General Settings page provides an easy way to set up or change the user name and password for QuickTime Broadcaster. A Broadcast Settings pane allows remote operation of QuickTime Broadcaster (on Mac OS X Server version 10.2 or later).

## For More Information

Additional QuickTime streaming resources are available. These include classes, mailing lists, and frequently asked questions (FAQs).

- The QuickTime Streaming Server product page (<http://www.apple.com/quicktime/products/qtss/>) provides the latest information on key features, recent downloads, and minimum requirements, with links to additional support pages.
- The public source web site (<http://developer.apple.com/darwin/projects/streaming/>) provides access to Darwin Streaming Server source code as well as access to the public Concurrent Version System (CVS) archive and developer information. Be sure to read the FAQs linked from this page.
- The Mac OS X Server AppleCare support page (<http://www.info.apple.com/usen/macosexserver/>) provides links to many useful Knowledge Base articles on all of the services that ship with Mac OS X Server, including QuickTime Streaming Server and Apache. It also provides links to downloadable PDFs of *Getting Started With Mac OS X Server* and *Mac OS X Server Administrator's Guide*.

- The QuickTime Streaming course takes an in-depth look at QuickTime Streaming Server and Darwin Streaming Server by teaching system administrators and QuickTime authors the details behind real-time streaming. For more information, see the Resources section of the QuickTime Streaming Server product page (<http://www.apple.com/quicktime/products/qtss/>).
- The best-selling *QuickTime for the Web* is an excellent hands-on guide. This Apple QuickTime Developer Series book shows how to integrate video, recorded sound, Flash animation, virtual reality, MIDI, text, still images, live streams, games, and user interactivity into a web site. The companion CD-ROM includes QuickTime Pro and a full set of development tools for both Windows and Macintosh. Published by Morgan Kaufmann, this award-winning book is featured with other useful titles on the QuickTime Instructional web site ([http://www.apple.com/quicktime/tools\\_tips/books.html](http://www.apple.com/quicktime/tools_tips/books.html)). Get the third edition for the most up-to-date information.
- The Apple Discussions area within the AppleCare support web site (<http://discussions.info.apple.com/>) provides a community posting location for QuickTime Streaming Server issues. Navigate to the Mac OS X Server section and then to QuickTime Streaming Server. You can post messages and view posts from other registered users.
- Apple hosts many mailing lists (<http://lists.apple.com>) including lists for streaming server users and developers. Actively followed by Apple engineers, these lists are an excellent resource for novice and advanced users alike. If you want to subscribe, click “Lists hosted on this site,” and then click “streaming-server users” or “streaming-server developers,” and sign up. You can also search through the archives of both lists.
- The QuickTime Services web site ([http://www.apple.com/quicktime/tools\\_tips/services/](http://www.apple.com/quicktime/tools_tips/services/)) lists streaming service providers. Apple partners listed provide services ranging from content delivery and encoding to authoring and webcasting.
- If you are an advanced user, you may want to review the Request for Comments (RFC) memorandums on the RTP and RTSP standards by visiting the web site of the Internet Engineering Task Force (IETF). For RTP, the web address is <http://www.ietf.org/rfc/rfc1890.txt>. For RTSP, it is <http://www.ietf.org/rfc/rfc2326.txt>.

# Getting Started

Welcome to QuickTime Streaming Server (QTSS) and Darwin Streaming Server (DSS).

Mac OS X Server includes QTSS in its suite of services. QTSS comes preinstalled on Apple server hardware and is optimized for the Power Mac G4. It is also installed if you purchase and install the Mac OS X Server software package.

DSS, based on the same code as QTSS and supported by the open source community, runs on non-Mac OS X Server platforms. You can download the source code and compiled binaries free of charge from the Apple Darwin Streaming Server web site (<http://developer.apple.com/darwin/projects/streaming/>).

QTSS and DSS are similar in design and configuration to Apache, the popular web server software that is also included in Mac OS X Server. If you have experience working with Apache, working with QTSS or DSS will seem familiar.

This chapter will help you get your streaming server up and running quickly.

**Note:** The instructions that follow assume that you have already installed and performed a basic setup of Mac OS X Server or other compatible server software. For instructions on setting up Mac OS X Server, see “Getting Started With Mac OS X Server” (included on the installation CD and available to download in PDF format at <http://www.info.apple.com/support/manuals.html>). For a list of platforms that DSS supports, see “Server Requirements” on page 17.

## Setup Overview

- 1 If you are currently using an older version of QTSS or DSS, and you want to retain your streaming server configuration, note the following:

*If you're upgrading Mac OS X Server:* Your old server settings (including streaming server settings) will be automatically preserved. If you want to do a “clean install” and preserve your old streaming server settings, back up your “/Library/QuickTimeStreaming/Config/” directory and merge back any customized settings.

*If you're upgrading DSS on a non-Mac OS X platform:* The new installation overwrites the configuration files. If you want to preserve your old settings, back up your "/etc/streaming/" directory (for Windows, "c:\Program Files\Darwin Streaming Server\" directory) and merge back any customized settings.

- 2 If you are setting up QTSS or DSS on a remote server or a server with no display attached (a "headless" server such as Xserve), you should already have set up an administrator computer from which you can enable and configure the streaming server software using the web-based Streaming Server Admin user interface (UI). For information on setting up an administrator computer, see *Getting Started With Mac OS X Server*.

**Important** During remote installation, the administrator computer and the server must be connected to the same IP subnet. If necessary, you can connect a portable administrator computer to the server's subnet during installation, or install the software over the administrator computer's subnet, and then move the server to its permanent network location to finish setting it up.

- 3 If you want to run DSS on non-Mac OS X Server platforms, download the free installation package (<http://developer.apple.com/darwin/projects/streaming/>).
- 4 If you want to broadcast live content, you can use QuickTime Broadcaster, which is included and installed with Mac OS X Server. For setup and other information, see the Apple QuickTime Broadcaster web page (<http://www.apple.com/quicktime/products/broadcaster/>) and QuickTime Broadcaster online help.

**Note:** QuickTime Broadcaster and QTSS must be running on the same computer if you want to control QuickTime Broadcaster remotely. This feature is available only with Mac OS X version 10.2 and QTSS 4.1 and later.

## Hardware and Software

Make sure that your hardware and software meet the following requirements.

### Client Computer Requirements

QuickTime 6 and a broadband Internet connection are required to take advantage of Instant-On using QuickTime Streaming Server or Darwin Streaming Server 4.1 or later.

Any computer with QuickTime 4 or later installed can view media streamed by the streaming server. For best results, Apple recommends QuickTime 6 or later.

Any ISO-compliant MPEG-4 player can view MPEG-4 files. Streaming MP3 playlists can be listened to using iTunes or other compatible streaming MP3 player such as WinAmp.

You can download QuickTime client software from the QuickTime web site at <http://www.apple.com/quicktime/products/qt/>



## Server Requirements

### QuickTime Streaming Server

You can use the QTSS software on an Xserve, a Macintosh Server G4, a Power Mac G4, a Macintosh Server G3, a Power Macintosh G3, an iMac, or an eMac.

Mac OS X Server version 10.2 or later must be installed. QTSS will also run under Mac OS X Desktop version 10.2 and Desktop/Server version 10.1.x, although this configuration is not eligible for AppleCare support.

Apple recommends

- at least 128 megabytes (MB) of random-access memory (RAM)
- a minimum of 512 MB of RAM and 500 megahertz or higher processor speed if you expect heavy traffic on your server
- 1 gigabyte of available disk space

Automatic hardware restart requires an Xserve, Macintosh Server G4, or Power Mac G4 released in February 2000 or later. Mac OS X Server does not support upgraded PowerPC processors.

### Darwin Streaming Server

DSS binaries and source code are available on the following platforms:

- Mac OS X
- RedHat Linux 7.2
- Solaris 8
- Windows 2000 and Windows NT

When installed on Mac OS X, DSS stores some of its binaries in the `/usr/sbin/` and `/usr/bin` directories (for Linux and Solaris, `/usr/local/sbin/` and `/usr/local/bin`). If this path is not included in your shell's default `$PATH` variable, add it to your shell's environment settings. Otherwise, you need to type the full path to the file when starting up any of these binaries (for example, `/usr/local/sbin/DarwinStreamingServer`).

## Live Broadcasting Requirements

You need the following equipment to stream live audio or video:

- Source equipment for audio, video, or both, such as a VCR, video camera, and microphone.
- A computer with QuickTime Broadcaster or other broadcast software (PowerPC G4 recommended for MPEG-4 broadcasting) and a video or audio capture card.

**Note:** QuickTime Broadcaster supports video capture from most FireWire-equipped sources, including digital video (DV) cameras, some webcams, and DV converter boxes for a fast and easy broadcasting process with professional-quality results.

- 128 MB of RAM (256 MB recommended for professional broadcasting).
- QuickTime 6 or later.

## Setting Up Your Streaming Server

Follow these steps to set up your streaming server:

- 1 From Mac OS X Server, click the Streaming Server Admin icon in the Dock. From a server with QuickTime Streaming Server or Darwin Streaming Server installed, open your web browser. From a remote computer, open Microsoft Internet Explorer version 4.5 or later, Netscape Navigator or Netscape Communicator version 4.x or later, or Mozilla 1.0 or later.

- 2 Enter the URL for your Streaming Server Admin computer. For example:

```
http://hostname:1220
```

where `hostname` is the hostname or IP address of your streaming server computer and 1220 is the port number.

The first time you run Streaming Server Admin, the Setup Assistant prompts you for a user name and password.

**Note:** For help on administering your streaming server software, select the question mark on any Streaming Server Admin page.

- 3 After entering and reentering a new user name and password in the Assign Username/Password page, click Set Password.

**Note:** You will use this user name and password to administer the streaming server.

The MP3 Broadcast Password page appears.

- 4 Enter and reenter a new password.

You will use this password when you send an MP3 stream to your streaming server.

- 5 Click Next.

The Secure Administration page appears. Enable this option only if you are administering your server remotely and have an SSL certificate installed for secure remote administration. For more information on secure mode operation, see “Installing SSL” on page 43.

- 6 Click Next.

The Media Folder page appears. Note the default path. This is where you place media you want to stream.

- 7 Click Next.

The Streaming on Port 80 page appears. Enable port 80 if you intend to allow content to be viewed from outside the local area network (that is, from the Internet). For information on the pros and cons of choosing this option, see “Streaming on Port 80” on page 45.

- 8 Click Finish.  
The Streaming Server Admin main screen appears. “Server is Running” should appear at the top of the screen.
- 9 If instead “Server is Idle” appears, click the Start Server button to start the server.  
The streaming server is now active and ready to stream media.
- 10 Click General Settings. If you want the server to start up each time you power on the server, choose Start Server at System Startup and click Save Changes.

## Testing Your Setup

Sample QuickTime movies are included with QTSS and DSS in the default movie folder so you can test the server setup. The sample movies can be viewed from a client computer using QuickTime Player.

**Note:** The included sample .mp3 file is for use in a streaming MP3 playlist only. It is *not* a hinted QuickTime movie and cannot be streamed on demand via RTSP. For information on hinted movies, see “Exporting a QuickTime Movie as a Hinted Movie” on page 29. For information on preparing MP3 and other prerecorded media for simulated live streaming, see “Preparing Prerecorded Media” on page 27.

### To view a sample movie:

- 1 Choose Open URL in New Player in the player File menu and enter, for example, the following URL:

```
rtsp://hostname/sample_300kbit.mov
```

where `hostname` is the host name or IP address of your server.

- 2 Click OK to request the sample movie.

QuickTime Player connects with the streaming server, a window appears, and the movie plays if the streaming server is functioning correctly.

This concludes the initial setup of your streaming server software. Additional settings depend on your hardware and software, network connections, expected number of viewers, and media you want to stream. For guidance in determining these settings and operating your streaming server, see Chapter 2, “Managing Your Streaming Server,” Chapter 3, “Setup Example,” and the resources listed on page 13.



# Managing Your Streaming Server

This chapter provides information you need to complete your setup and manage your streaming server. Topics covered include

- using the administration tool Streaming Server Admin
- working with media
- dealing with security issues
- solving common problems

The last section answers questions raised by more advanced users.

## User Interface

To set up and manage QuickTime Streaming Server (QTSS) and Darwin Streaming Server (DSS), you use the web-based Streaming Server Admin application. This tool provides a standard graphical user interface for all supported platforms and allows you to administer the streaming server locally or remotely.

## Working With Streaming Server Admin

Streaming Server Admin is a web-based user interface (UI) in which you can change general settings, create and serve playlists, monitor connected users, view log files, manage bandwidth usage, relay a stream from one server to another for scalability, and control QuickTime Broadcaster remotely. Because the interface is web-based, you can administer your server and QuickTime Broadcaster from anywhere by connecting from any computer with compatible software and with Internet access.

### To configure and administer your server:

- 1 From Mac OS X Server, click the Streaming Server Admin icon in the Dock. From a server with QuickTime Streaming Server or Darwin Streaming Server installed, open your web browser. From a remote computer, open Microsoft Internet Explorer version 4.5 or later, Netscape Navigator or Netscape Communicator version 4.x or later, or Mozilla 1.0 or later.

- 2 Enter the URL for your Streaming Server Admin computer. For example:

`http://hostname:1220`

where `hostname` is the hostname or IP address of your streaming server computer and `1220` is the port number.

The first time you run Streaming Server Admin, the Setup Assistant prompts you for a user name and password.

To display online help, click the question mark button in the UI. Information about QTSS and DSS is also available at the QuickTime web site ([www.apple.com/quicktime/products/qtss/](http://www.apple.com/quicktime/products/qtss/)) and the Mac OS X Darwin web site (<http://developer.apple.com/darwin/projects/streaming/>).

### Viewing Streaming Status

You can view a snapshot of current streaming server activity or see information about connected users in the Main and Connected Users panes of Streaming Server Admin.

#### To view streaming server activity:

- 1 Click Main in Streaming Server Admin.
- 2 To see information about connected users, click Connected Users in Streaming Server Admin.

### Starting or Stopping Streaming Service

You can start or stop streaming service at any time by clicking the button at the top of the Streaming Server Admin window.

- To start streaming service, click Start Server.
- To stop streaming service, click Stop Server.

### Working With Connected Users

To see the Connected Users pane, click Connected Users in Streaming Server Admin.

In this pane, you can view information about the client users currently connected to your streaming server. You can display the information in a number of ways using the onscreen controls.

To change the number of entries displayed, choose a number from the “Display \_\_\_ entries” pop-up menu.

To change how often the list is updated, choose a number from the “Page Refresh Interval” pop-up menu.

To select the sort column, click the column label by which you want to sort the user information.

To select the sort order, click the arrow next to the selected column label.

## Changing Server Settings

You can click the labels along the left side of the Streaming Server Admin screen to display various settings panes.

### To change the settings for streaming service:

- 1 Click General Settings, Port Settings, Relay Settings, Log Settings, or Playlists.
- 2 Make the changes you want and click Save Changes.

## Controlling QuickTime Broadcaster Remotely

If you have QuickTime Streaming Server (QTSS) 4.1.1 or later, you can use the web-based Streaming Server Admin to control QuickTime Broadcaster remotely. This comes in handy if, for instance, the broadcaster is installed on a rack-mounted Xserve computer running “headless” (without a monitor) on the same local network or even hundreds of miles away and accessible via the Internet. You can use any computer with an appropriate web browser and a network connection to perform the broadcaster control functions.

Using Streaming Server Admin to control QuickTime Broadcaster remotely requires that the broadcaster and QTSS be installed on the same computer. A Broadcast Settings pane in Streaming Server Admin provides a simple user interface (UI) for controlling the broadcaster.

**Note:** This feature works only with Mac OS X version 10.2 and later.

If you want the broadcaster presets that were set by the user who initially set up the broadcaster to be accessible from Streaming Server Admin, you (or a colleague) must move the presets directory via the broadcaster UI from the Home directory of the initial user to a newly created shared folder. To specify the new presets location, choose Preferences in the QuickTime Broadcaster menu and enter the new path:

```
/Library/QuickTimeStreaming/Config/Broadcaster Presets/
```

### To set up and start a broadcast remotely:

- 1 From the remote (controlling) computer, open Microsoft Internet Explorer version 4.5 or later, Netscape Navigator or Netscape Communicator version 4.x or later, or Mozilla 1.0 or later.
- 2 Enter the URL for your Streaming Server Admin computer:

```
http://hostname:1220
```

where `hostname` is the hostname or IP address of your streaming server computer and 1220 is the port number. It is assumed that QTSS has been configured and is running. The Streaming Server Admin UI appears in your browser window.

- 3 Click Broadcaster Settings to display the Broadcaster Settings pane.

- 4 Choose and enable the audio and/or video presets you want and specify an SDP file name and the buffer delay in seconds (zero for instant-on streaming).

If you want to record the broadcast for future rebroadcast, specify the path to the Movies directory in the “Record to” field and select the Enabled checkbox.

If you want to broadcast to a different streaming server, select the “Send this broadcast to a different streaming server” checkbox and enter the hostname or IP address of that server and the user name and password of the broadcast user account created on that server.

If you want to broadcast over TCP (a slower but more accurate transmission method), select the “Broadcast over TCP” checkbox.

- 5 When the settings are correct, click Save Changes, then click Start Broadcast to begin broadcasting through the streaming server.

If the broadcaster is already running in non-headless mode (opened from the Dock), you will be presented with the option of restarting the broadcaster in headless mode (required for remote administration).

If the broadcaster transmission method is Automatic Unicast (Announce), QuickTime Broadcaster creates an SDP file with the name you specified and automatically copies it into the Movies folder of the streaming server.

- 6 To view the broadcast, click View Broadcast in the Broadcaster Settings pane.
- 7 To stop the broadcast, click Stop Broadcast in the Broadcaster Settings pane.

For more information on Streaming Server Admin, see “Working With Streaming Server Admin” on page 21. For more information on creating a broadcast user account, see “Using Automatic Unicast (Announce) With QTSS or DSS on a Separate Computer” on page 43.

### Working With General Settings

Use General Settings in Streaming Server Admin to access the streaming server functions listed.

- To see the general settings, click General Settings.

“Media Directory” contains the media files available to streaming server clients. The files must be properly formatted streaming media files. The media files must be located in the media directory or in any of its subdirectories.

“Secure Administration” lets you enable or disable SSL security for Streaming Server Admin. Before you enable secure administration, you must get a valid certificate signed by a certificate authority such as VeriSign or Thawte, and install it in /Library/QuickTimeStreaming/Config/streamingadminserver.pem with the information from your certificate file.



For Windows, install the certificate in c:\Program Files\Darwin Streaming Server\streamingadminserver.pem.

For other supported platforms, install the certificate in /etc/streaming/streamingadminserver.pem.

“Max. Number of Connections” lets you set the maximum number of connections. When this number is reached, users who try to connect see a message that the server is busy (error 453).

“Max. Throughput” lets you set the maximum throughput of the server. If the maximum throughput is reached, no one else can connect. Users who try to connect see a message that the server is busy (error 453).

“Default Authentication Scheme” lets you choose between basic or digest. By default, the server uses the more secure digest authentication. However, digest authentication requires that users connect with QuickTime 5 or later. Basic authentication is less secure than digest but is compatible with earlier versions of QuickTime.

“Change Admin Username/Password” lets you change the server administrator’s user name and password.

“Change Movie Broadcast Password” lets you create or update a broadcast user account on the streaming server. This account allows an SDP file to be created on the server. You can then broadcast from QuickTime Broadcaster to QuickTime Streaming Server running on a separate computer using the Automatic Unicast (Announce) transmission method.

**Note:** Using this feature will overwrite any existing access controls that the user has placed on the QTSS Movies directory. The qtaccess file is overwritten when the user name/password change is made.

“Change MP3 Broadcast Password” lets you change the password required to send an MP3 broadcast stream. The MP3 broadcast password cannot contain spaces.

## Working With Port Settings

You can view and change port settings in Streaming Server Admin.

- To see the port settings, click Port Settings.

“Streaming on Port 80” lets you serve QuickTime streams over HTTP port 80. If you need to serve streams past firewalls, you may need to enable streaming on port 80. If your computer is also running a web server, enabling streaming on port 80 causes a port conflict that results in one or both of the servers’ not behaving properly.

## Working With Log Settings

You can view logs and change log settings in Streaming Server Admin.

- To see the log settings, click Log Settings.

“Error Log” shows error and informational messages. Use this log to troubleshoot problems with the server.

“Access Log” shows the number of times each media file has been accessed, when it was accessed, and who has accessed it since the log was reset. Access errors are also reported in the log. Currently, MP3 client connections are not displayed. A raw MP3 access log can be viewed by looking in /Library/QuickTimeStreaming/Logs/mp3\_access.log (for Mac OS X), c:\Program Files\Darwin Streaming Server\Logs\ (for Windows), or /var/streaming/Logs/mp3\_access.log (for other supported platforms).

You can specify that each log be reset after a certain number of days or after it reaches a certain size (in KB).

### Viewing Error Logs and Access History

If logging is turned on in the Logging Settings pane of Streaming Server Admin, information about access and errors is saved to log files.

- Click Error Log or Access History to choose which log you want to view.

The information stored in the access log can be analyzed using software from other vendors. The access history log is updated only as client connections are disconnected. Any currently connected clients at the time of a power failure or server crash are never logged, and won't appear in the access log when the server is restarted.

These logs and some additional logs you might find useful are, with the exception noted below, stored in the following locations:

*Mac OS X:* /Library/QuickTimeStreaming/Logs/

*Windows:* c:\Program Files\Darwin StreamingServer\Logs\

*Other supported platforms:* /var/streaming/Logs/

The default file names are as follows:

*Error Log:* Error.log

*QuickTime movie and broadcast requests log:* StreamingServer.log

*Streaming MP3 requests log:* mp3\_access.log

*Streaming admin server requests log:* streamingadminserver.log

*Playlists log (one per play list):* playlistname.err

where playlistname is the name of the playlist.

The playlists log is stored in the following locations (where playlistname is the name of the play list):

*Mac OS X:* /Library/QuickTimeStreaming/Playlists/playlistname/

*Windows:* c:\Program Files\Darwin Streaming Server\Logs\

*Other supported platforms:* `/var/streaming/Playlists/playlistname/`

## Media

This section provides information you need to broadcast live or prerecorded media as streaming video and/or audio. You can also learn about instant-on streaming, creating playlists, setting up a web page with streamed media, and bandwidth considerations.

### About Instant-On Streaming

Viewers watching a streaming video with QuickTime 6 and later will benefit from Instant-On, an advance in Apple skip-protection technology (patent pending) that dramatically reduces buffer, or wait, time for an instantaneous viewing experience. Viewers can click around or scrub video as if it were on their hard disks.

Users must have a broadband connection to experience instant-on streaming. The responsiveness of instant-on streaming is affected by available bandwidth and size, or data rate, of the content. Responsiveness can also be affected by the codec used. Hinted movies made using the QDesign Audio codec, for example, may not be instant-on capable.

### Preparing Prerecorded Media

Prerecorded media can be played back as a simulated live stream in a playlist when prepared properly.

#### **To prepare prerecorded media for broadcast in a playlist:**

- 1 Use the same number and types of tracks for each movie in the playlist.  
Be sure all the media files contain compatible media types. For example, all audio tracks should use the same encoding, sampling rate, compression, and bit rate. All video tracks should also use the same encoding, compression, and bit rate.
- 2 Format the media in each file in the same way.  
For example, use the same frame size for each video track.
- 3 For movie playlists, be sure each media file is a hinted QuickTime movie or a hinted MPEG-4 file.  
For an MP3 playlist, each file must be an MP3 audio file with the same sample rate (the data rates do not need to be the same). Do not hint MP3 files when preparing an MP3 playlist.
- 4 Copy all media files to your streaming server.

Be sure to copy the files into the directory you specified for streaming.

**Important** QuickTime Streaming Server (QTSS) or Darwin Streaming Server (DSS) cannot be used to natively serve MP3 files on demand (that is, as an HTTP download).

Rather QTSS and DSS support of MP3 streams is intended for shoutcast/icecast-compatible live streams (such as those created by a streaming playlist) or live streams of other compatible MP3 live encoder broadcasters.

If you wish to serve individual MP3 files on demand (not as live streams), simply host the files on a web server in a web documents folder.

### Preparing Audio

MP3 audio files can be played back in an MP3 playlist and listened to using iTunes or another compatible streaming MP3 player.

#### To prepare MP3 files:

- 1 Open the audio file using software that can convert it to MP3 format.
- 2 Save the audio files as MP3 files.
- 3 Make sure all audio uses the same encoding, sampling rate, compression, and bit rate.
- 4 Copy all prepared audio files to the media directory on your streaming server.

### Streaming Media Files With Multiple Sources

QuickTime movies often use content from several media files. For example, a video clip can be combined with music stored separately from the video. When you export a QuickTime movie, make it a “self-contained” file so that it includes all the source media. This improves server performance.

If, for some reason, you cannot export the movie as self-contained, here’s what you can do.

#### To stream movies that are not self-contained:

- 1 Copy all the files needed by the movie to the same folder or directory.
- 2 Store all the files in the directory on your server that you specified as the media directory in Streaming Server Admin.

### Streaming File Formats Like .avi, .text, and .wav

If you have QuickTime Pro (a set of advanced features available with QuickTime Player), you can apply hinting to .avi, .text, .wav, and other file formats. Hinting allows you to stream a non-.mov file using QTSS or DSS while retaining the original file.

To hint a file, you must import it into QuickTime Player and then export it as a hinted movie.

### **To apply hinting and export a file as a movie:**

- 1 Import the file into QuickTime Player by choosing Import from the File menu.
- 2 Export the file by choosing Export from the File menu.
- 3 In the “Save exported file as” dialog, choose “Movie to QuickTime Movie” from the Export pop-up menu, if it’s not already selected, then click the Options button.
- 4 In the Movie Settings dialog, choose Hinted Streaming from the pop-up menu and click the Settings button.

Make sure that Make Movie Self-Contained is unchecked.

- 5 Close each dialog by clicking OK, choose a filename and location, and save the file.
- 6 Place both the .mov file (containing only the hint tracks) and the original file (containing only the media data) on your streaming server.

If you have folders inside your media folder, make sure that both files are in the same folder. For example:

*New file with only hint tracks:* myfile.mov

*Original, non-hinted file:* myfile.avi

To stream the original file, use an RTSP (Real-Time Streaming Protocol) URL that references the hinted “.mov” file.

- 7 In QuickTime Player, choose “Open URL in New Player” from the File menu, then enter the following URL:

```
rtsp://qtss.hostname/myfile.mov
```

The file should begin streaming. The RTSP URL from the client tells the server to read the hinted file and directly stream the media data from the .avi file.

### **Exporting a QuickTime Movie as a Hinted Movie**

Hint tracks contain information the streaming server needs to stream the media properly. Hint tracks allow the streaming server to stream QuickTime movies without having to understand QuickTime media types or codecs. The server only needs to know the hint track format. When a new codec must be streamed, typically the server software doesn’t require an update. Hinting also precomputes packetization rules for some media that normally require bit-level parsing, interleaving, and so on, relieving the server of this task.

Most authoring applications let you export media as a hinted QuickTime movie. If you have QuickTime Pro, you can also hint a movie using QuickTime Player. QuickTime Pro is available for both Mac OS and Windows computers. Check the QuickTime web site for more information.

Each track in a media file must have its own hint track. For example, a movie with one audio and one video track must have two hint tracks: one for the audio track and one for the video track.

When you use QuickTime Player to export a movie as a hinted movie, QuickTime adds all the necessary hint tracks automatically.

**To export a QuickTime movie as a hinted movie with QuickTime Player:**

- 1 Open QuickTime Player on a Mac OS X, Mac OS, or Windows computer.
- 2 Open the QuickTime movie you want to hint.
- 3 Choose Export from the File menu.
- 4 Choose “Movie to Hinted Movie” from the pop-up menu, then type a new filename.
- 5 Click Save.

### Improving the Performance of Hinted Movies

When you export a hinted movie from QuickTime Player, you can compress video and sound using either the native RTP payload encoder or the generic QuickTime payload encoder. To select QuickTime, click Options in the QuickTime Player Export dialog, then click the Track Hinder Settings button.

The QuickTime payload encoder parses media samples into equal-sized packets. If a video frame takes up 10 packets, and one is lost, the whole frame is discarded. Payload encoders native to a specific codec take advantage of specific knowledge of the media format to parse the data into packets in a more compact way. They can recover a partial frame if a video packet is lost.

Generally, native payload encoding is preferred. Check with your codec manufacturer for specific guidelines regarding payload encoding.

Use care and experimentation when choosing between native and QuickTime payload encoders.

### Session Description Protocol (SDP) Files

A Session Description Protocol (SDP) file contains information about the format, timing, and authorship of the streamed media. For live streaming, SDP files are created on the capture-and-encoding computer by QuickTime Broadcaster or other broadcast software. For broadcasts of prerecorded media, an SDP file is automatically created on your streaming server. To stream either live or prerecorded media, an SDP file must be present in the media directory you’ve designated in Streaming Server Admin.

In most cases you should not modify the SDP file manually. However, if you change anything about the media you're streaming, you must delete the SDP file, let the broadcast software create a new SDP file, and then copy this new SDP file to the media directory on your streaming server.

For more information on SDP files, search the web for RFC SDP or RFC RTSP.

## Streaming Live Media

Live media requires minimal preparation as long as you have the correct equipment.

### To stream live media:

- 1 Connect the audio or video equipment to the computer you're using to capture and encode the live signal.
- 2 Set up your broadcast software following the instructions that came with it.

If you're using QuickTime Broadcaster and the Automatic Unicast (Announce) transmission method, the broadcast software creates a Session Description Protocol (SDP) file automatically, if needed. For more information, see "Using Automatic Unicast (Announce) With QTSS or DSS on a Separate Computer" on page 43.

If your broadcast software does not have this feature, you must create an SDP file on the computer you use to capture and encode the live signal. See the instructions that came with your broadcast software.

- 3 Copy the SDP file to your streaming server computer.  
Be sure to copy the file into the media directory you're using for streaming.
- 4 Make sure the streaming server is running.
- 5 Start the broadcast software following the instructions that came with it.
- 6 Test the broadcast by connecting to your streaming server with client software.

Give users an RTSP URL to your SDP file, or an HTTP URL to the QuickTime reference movie that you placed on your web server. If you want the streamed media to show on a web page, set up the web page by using the EMBED tag or creating a separate QuickTime reference movie (for more information about setting up a web page, see "Setting Up a Web Page With Streamed Media" on page 32).

## Viewing Streamed Media From a Client Computer

To view streaming media, users must have QuickTime 4 or later installed.

### To view media from a client computer:

- 1 Open QuickTime Player.
- 2 Choose Open URL from the File menu.

- 3 Enter the URL for the media file (for example: `rtsp://myserver.com/mymedia`).
- 4 Replace `myserver.com` with the DNS name of your streaming server computer, and `mymedia` with the name of your hinted movie or media file. This URL assumes that the movie or media file is located at the top level of your media directory. For movies in subfolders within the media directory, add the folder to the path name. For example:

```
rtsp://myserver.com/myfolder/mymedia.mov
```

If you want users to view streamed media through a web browser, you must set up a web page to show the media. Then give users the URL of the web page.

Do not attempt to view media in a web browser by typing an RTSP URL directly into the web browser's address field.

### Setting Up a Web Page With Streamed Media

To embed streaming media in a web page, you use the HTML EMBED tag. For complete documentation on the features and use of the EMBED tag, go to [www.apple.com/quicktime/authoring/embed.html](http://www.apple.com/quicktime/authoring/embed.html)

The following example places a graphical link to a movie, "sample.mov," on a web page. (You can rename the sample movie that comes with QuickTime and use it for the example.) When a user clicks the link, the movie will start streaming in QuickTime Player.

```
<HTML>
<BODY>
This is a sample use of the EMBED tag.<BR>
<EMBED SRC="http://my.webserver.com/linkimage.mov" width="150"
        height="64" href="rtsp://my.streamingserver.com/sample.mov"
        target="QuickTimePlayer">
</BODY>
</HTML>
```

The URL specified in the SRC attribute is a link to a still image that has been exported as a nonhinted QuickTime movie, "linkimage.mov." This image file serves as the link to the streaming movie. The width and height attributes specify the width and height of the image area. The HREF attribute is the URL for the streaming movie that will start playing when the image is clicked.

To let users view streaming media from a web page, create a reference movie that contains a streaming track with an RTSP URL that points to the media on your streaming server. Store the reference movie in the same directory as your web site and include a link to the reference movie on your web page. For more information on creating a reference movie, go to [developer.apple.com/quicktime/](http://developer.apple.com/quicktime/) and click the Tools link. Look for the MakeRefMovie tool under WebMaster Tools.



A reference movie can simply be a text file with a “.mov” filename extension (such as “ref.mov”). The format for the contents of the file is as follows:  
rtsp:rtsp://my.streamingserver.com/sample.mov

### Creating Links to MP3 Playlists

If you want to put an MP3 playlist on the web, you need to create an audio metafile that directs the web browser to your playlist and opens the user’s MP3 player. There are two types of audio metafile you can use: M3U and PLS. To create the audio metafile, use a text editor to create the file, include the proper extension (“.m3u” for M3U metafiles and “.pls” for PLS metafiles) at the end of the filename, and format it as described here.

The M3U file contains a single line of text in this format:

```
http://your.ip.addr:8000/mountpoint
```

A PLS file uses this format:

```
[playlistname]  
File1=http://your.ip.addr:8000/mountpoint  
Title1=Playlist Title  
Length1=-1  
NumberOfEntries=1  
Version=2
```

Place the .m3u or .pls file in the same directory as your web site and link to it just as you would link any other downloadable file. Most web browsers are configured to open .m3u and .pls files using the user’s MP3 player automatically.

### Bandwidth Considerations

It’s generally not a good idea to connect a streaming server to the Internet or local area network by Digital Subscriber Line (DSL) or cable modem. The server will be severely limited by the relatively small bandwidth of DSL and cable modems for uploading data. In some cases, running a server on a DSL connection may break a DSL service agreement. Consult your DSL or cable modem service provider before setting up the server.

When authoring Real-Time Transport Protocol (RTP) streams, make sure they do not exceed 75 percent of anticipated client throughput. For example, don’t use a rate higher than 20 kilobits per second (Kbps) for a 28 Kbps modem connection. For a typical 56K modem connection, don’t use a rate higher than 31 Kbps. For a T1 (1500 Kbps) client connection, don’t use a rate higher than 1125 Kbps.

## Playlists

Playlists are sets of media files in the QTSS or DSS media folder specified to play one after the other or in random sequence. This section provides basic information on creating and working with playlists.

### Using Playlists to Broadcast Prerecorded Media

You can create a virtual “radio station” or video broadcast by setting prerecorded QuickTime media, MPEG-4, or MP3 files to play in a specified order (a playlist). Setting up a series of playlists broadcasts the media to the streaming server, which sends the media to viewers in the sequence you set up (random or ordered). Although the media is prerecorded, it appears to viewers as a live broadcast. All viewers see the same media when they tune in to the broadcast.

#### To broadcast media in a playlist:

- 1 Prepare QuickTime, MPEG-4, or MP3 media.
- 2 Create a playlist.
- 3 Start broadcast service by clicking the Play button for each playlist.
- 4 Tell users how to connect to the broadcast.

For movie playlists, provide an RTSP URL. For MP3 playlists, provide an HTTP link.

### Working With Playlist Settings

You can change playlist settings in the Playlists pane of Streaming Server Admin.

To see a playlist’s settings, click Playlists, then click the name of the playlist you want to see in the Available Playlists pane, and click Edit Playlist.

“Name” is the name you give your playlist and the name that appears in the Available Playlists pane.

“Mount Point” is the path section of the URL you give to clients (or that you embed in a web page). You must give the mount point a name (often the same name as the playlist). Spaces are automatically converted to underscores and “.sdp” is appended to the name of the file. Don’t use the “.sdp” extension if this is an MP3 playlist.

The playlist name and mount point must be unique. No two broadcasts can use the same name.

“Play Mode” can be one of three types:

“Sequential” broadcasts the media in the order in which it appears in the playlist file. When the last media file has ended, the broadcast stops.

“Sequential Looped” broadcasts the media in the order in which it appears in the playlist file. When the last media file has ended, the playlist repeats in the same order.

“Weighted Random” broadcasts the media in random order using the specified weights to determine how often an item plays. The higher the weight, the more often the item is played. The media plays until you stop the broadcast.

“Repetition” lets you set the number of items that must play before an item can repeat. If you set a value other than zero for repeated items, make sure the number is less than the number of media files in the playlist.

“Genre,” available only for MP3 playlists, lets you choose a category to display in MP3 players that tune in to your broadcast.

- Click the Remove Item button to remove selected items from your playlist.
- Enable logging for each playlist by clicking the “Log this playlist’s activity” checkbox.
- If you want to relay the broadcast of a playlist to another streaming server, click the “Send this playlist to a broadcast server” checkbox. Enter a name and password, if required. A password is required only for MP3 playlists.

### Starting and Stopping Playlists

You start and stop broadcasting playlists in the Playlists pane of Streaming Server Admin.

To start broadcasting a playlist, click the Play button next to the name of the playlist.

To stop broadcasting a playlist, click the Stop button.

### Creating a Playlist

You can create a playlist of movies, MPEG-4 files, or MP3 audio tracks.

- 1 Click Playlists in Streaming Server Admin.
- 2 Click New MP3 Playlist or New Movie Playlist.
- 3 Enter a name for the playlist.
- 4 Enter a name for the Mount Point.
- 5 Choose a play mode from the pop-up menu.
- 6 Enter a number in the Repetition field to set how often an item can repeat.
- 7 If this is an MP3 playlist, choose a category from the Genre pop-up menu.
- 8 To add an item to the playlist, drag it from the Available Media column into the Items in This Playlist column.
- 9 To remove an item from the playlist, click it in the Items in This Playlist column, then click Remove Item.
- 10 Drag items up or down in the list to change the order in which they’re played.
- 11 Use the Weight column to establish the weight for items (if you’re broadcasting randomly).

- 12 Click “Log this playlist’s activity” if you want a log of the playlist’s activity.
- 13 Click “Send this playlist to a broadcast server” if you want to relay the broadcast to another streaming server. Enter the name and password, if required. A password is required only for MP3 playlists.
- 14 Click Save Changes to save the new playlist.

### Changing a Playlist

You can change a saved playlist of movies or MP3 audio tracks.

#### To edit a playlist:

- 1 Click Playlists in Streaming Server Admin.
- 2 Click a playlist name.
- 3 Click Edit Playlist.
- 4 Choose a play mode from the pop-up menu.
- 5 Enter a number in the Repetition field to set how often an item can repeat.
- 6 If this is an MP3 playlist, choose a category from the Genre pop-up menu.
- 7 To add an item to the playlist, drag it from the Available Media column into the Items in This Playlist column.
- 8 To remove an item from the playlist, click it in the Items in This Playlist column, then click Remove Item.
- 9 Drag items up or down in the list to change the order in which they’re played.
- 10 Use the Weight column to establish the weight for items (if you’re broadcasting randomly).
- 11 Click “Log this playlist’s activity” if you want a log of the playlist’s activity.
- 12 Click “Send this playlist to a broadcast server” if you want to relay the broadcast to another streaming server. Enter the name and password, if required. A password is required only for MP3 playlists.
- 13 Click Save Changes to save your changes to the playlist.

If you make changes to a playlist that is currently running, you need to stop and restart the playlist.

### Deleting a Playlist

You can delete a saved playlist of movies or MP3 audio tracks by following these steps.

- 1 Click Playlists in Streaming Server Admin.
- 2 Select the name of the playlist you want to delete.

- 3 If the playlist is running, click the Stop button.
- 4 Click Delete Playlist.

## Relays

This section provides detailed information on setting up relays and working with relay settings, using Streaming Server Admin.

### Working With Relay Settings

Relays are used to accept a stream from one streaming server and send the stream on, or “relay” it, to another streaming server. You set up relays using the Relay Settings pane in Streaming Server Admin.

To see the Relay Settings pane, click Relay Settings.

The “Default Relay” relays all incoming broadcasts that are automatically announced to the streaming server to one or more destinations. The default relay is set up just like any other relay except there are no source settings. The default relay appears in the Relay Status pane with the name `***qtssDefaultRelay***`. The default relay can accept only forwarded media streams using the RTSP announce protocol. UDP streams are not supported.

“Status: `_ Enabled`” instructs the server to relay any broadcast that is announced to it as soon as the relay is saved.

“Relay Name” is used to identify the relay in Relay Settings and in the Relay Status pane.

“Source Hostname or IP Address” is the DNS hostname or IP address of the source computer.

“Mount Point” is the name of the source that needs to be relayed. For example, if you want to relay the incoming broadcast announced as “birthdayceleb.sdp,” the mount point is set to birthdayceleb.sdp. You could also relay a source acquired by acting as a client and requesting it from the source server. In this case, the mount point must be the URL of the resource to acquire.

“Request incoming stream” directs the streaming server to send a request to the source computer for the incoming stream before it gets relayed. This feature can be used to relay a reflected live broadcast (from another server). It can also be used to request a stored file and turn it into an outgoing live stream.

In any of these fields, “User Name/Password” is used if the source or destination computers require automatic broadcasts to be authenticated with a name and password.

“Wait for announced stream(s)” directs the server to wait for the incoming stream and then relay it. Relays set to wait for announced streams can accept only media streams using the RTSP announce protocol. User Datagram Protocol (UDP) streams are not supported.

“Relay via TCP” sets broadcasts to announce the stream to the destination computer via TCP. The destination computer must support the automatic announcing of broadcasts. For Relay via TCP, the mount point is the path to the destination URL. Like any mount point, it points to a Session Description Protocol (SDP) file and must end in “.sdp” (for example, Keynote\_Relay.sdp). If a mount point is not supplied, then the mount point of the source is automatically used.

“Relay via UDP” sets broadcasts that don’t require announcing to stream over a UDP port. Use this if streaming media is being relayed directly to a QuickTime client or a multicast address, or to a streaming server that doesn’t support automatic broadcasting.

“Base Port” is the port number the destination computer uses to listen for incoming streams. A UDP port is required for each stream. A typical relay can have multiple streams, usually one audio stream and one video stream. The Base Port field must contain the UDP port of the first stream that is relayed. It must be an even port number greater than 6000. Consecutive even numbers are chosen for the remaining UDP ports. Even numbers are for Real-Time Transport Protocol (RTP), and the intermediate odd numbers are for Real-Time Transport Control Protocol (RTCP). If the base port is set to 6000, then 6002, 6004, and so on are automatically chosen as the remaining UDP ports for multiple streams.

“Multicast TTL” is the time-to-live (TTL) value specifying the number of times a media stream can be passed from one router to another before the stream is no longer transmitted. The value can be any number between 1 and 255. A value of 1 reaches client computers on the local area network. The larger the number, the farther the multicast packets will travel.

## Setting Up Relays

You can use the Relay Settings pane in Streaming Server Admin to set up relays. Each relay comprises a source and one or more destinations. You can also enable a “default relay” for all incoming broadcasts that are automatically announced to your streaming server and set up one or more relay destinations.

### To set up a relay:

- 1 Click Relay Settings.
- 2 Click New Relay or Edit Default Relay.
- 3 Complete the fields for Source Settings (not necessary for the default relay).
- 4 Complete the fields for Destination.
- 5 If you want additional destinations, click Add Destination and fill out the necessary fields.
- 6 Click Save Changes to add the source to your relay settings.

## Turning a Relay On or Off

You can turn a relay on or off in the Relay Settings pane of Streaming Server Admin.

To turn on a relay, click the name of the relay. Then click Edit Relay and click the Enabled checkbox to display the checkmark.

To turn off a relay, click the name of the relay. Then click Edit Relay and click the Enabled checkbox to remove the checkmark.

## Security

A certain level of security is inherent in real-time streaming, since content is delivered only as the client needs it and no files remain afterward. But other security issues usually need to be addressed. Aspects of streaming security covered in this section include

- setting up password protection for content
- configuring qtaccess to limit access to the media folder
- encrypting communications when using the web-based Streaming Server Admin tool
- streaming on Port 80

## Resetting the Streaming Server Admin User Name and Password

If you forget the Streaming Server Admin user name and password, you can reset them.

### To reset the user name and password:

- 1 Log in to the server computer as root, open a terminal, and type the following:

```
qtpasswd someUserName
```

where `someUserName` is a name of your choice.

- 2 Follow the prompts by entering the administrator user name and a password you want to assign to the user `someUserName`.
- 3 Using a text editor, modify the `/Library/QuickTimeStreaming/Config/qtgroups` file.

For Windows, modify the `c:\Program Files\Darwin Streaming Server\qtgroups` file. For other supported platforms, modify the `/etc/streaming/qtgroups` file. Modify the file so that the user name you just created or modified is included in the group Admin, as follows:

```
admin: someUserName
```

- 4 Save the file as ordinary text (not `.rtf` or any other file format).

## Controlling Access to Streamed Media

You can set up authentication to control client access to streamed media files. Two schemes of authentication are supported: basic and digest. By default, the server uses the more secure digest authentication.

You can also control playlist access and administrator access to your streaming server. Authentication does not control access to media streamed from a relay server. The administrator of the relay server must set up authentication for relayed media.

The ability to manage user access is built into the streaming server, so it is always enabled.

For access control to work, an access file must be present in the directory you selected as your Media Directory. If an access file is not present in the streaming server media directory, all clients are allowed access to the media in the directory.

### To set up access control:

- 1 Use the `qtpasswd` command-line utility to create new user accounts with passwords.
- 2 Create an access file and place it in the media directory that you want to protect.
- 3 If you want to disable authentication for a media directory, remove the access file (called `qtaccess`) or rename it (for example, `qtaccess.disabled`).

## Creating an Access File

An access file is a text file called `qtaccess` that contains information about users and groups who are authorized to view media in the directory in which the access file is stored. The directory you use to store streamed media can contain other directories, and each directory can have its own access file. When a user tries to view a media file, the server checks for an access file to see whether the user is authorized to view the media. The server looks first in the directory where the media file is located. If an access file is not found, it looks in the enclosing directory. The first access file that's found is used to determine whether the user is authorized to view the media file.

The access file for the streaming server works like the Apache web server access file.

You can create an access file with any text editor. The filename must be `qtaccess` and the file can contain some or all of the following information:

```
AuthName <message>
AuthUserFile <user filename>
AuthGroupFile <group filename>
require user <username1> <username2>
require group <groupname1> <groupname2>
require valid-user
require any-user
```



Terms not in angle brackets are keywords. Anything in angle brackets is information you supply.

Save the access file as plain text (not .rtf or any other file format).

`message` is text your users see when the login window appears. It's optional. If your message contains any white space (such as a space character between terms), make sure you enclose the entire message in quotation marks.

`user filename` is the path and filename of the user file. For Mac OS X, the default is `/Library/QuickTimeStreaming/Config/qtusers`. For Windows, it is `c:\Program Files\Darwin Streaming Server\qtusers`). For other supported platforms, it is `/etc/streaming/qtusers`.

`group filename` is the path and filename of the group file. For Mac OS X, the default is `/Library/QuickTimeStreaming/Config/qtgroups`. For Windows, it is `c:\Program Files\Darwin Streaming Server\qtgroups`. For other supported platforms, it is `/etc/streaming/qtgroups`. A group file is optional. If you have a lot of users, it may be easier to set up one or more groups, and then enter the group names, than to list each user.

`username` is a user who is authorized to log in and view the media file. The user's name must be in the user file you specified. You can also specify `valid-user`, which designates any valid user.

`groupname` is a group whose members are authorized to log in and view the media file. The group and its members must be listed in the group file you specified.

You can use these additional user tags:

- `valid-user` is any user defined in the `qtusers` file. The statement "require valid-user" specifies that any authenticated user in the `qtusers` file can have access to the media files. If this tag is used, the server will prompt users for an appropriate user name and password.
- `any-user` allows any user to view media without providing a name or password.

You can also add the keyword `AuthScheme` with the values "basic" or "digest" to a `qtaccess` file. This overrides the global authentication setting on a directory-by-directory basis.

If you have made customized changes to the default `qtaccess` access file, be aware that making any changes to broadcast user settings in Streaming Server Admin will modify the default `qtaccess` file at the root level of the Movies directory. Any customized modifications you may have made prior to this will not be preserved.

## What Clients Need to Access Protected Media

Users must have QuickTime 5 or later to access a media file for which digest authentication is enabled. If your streaming server is set up to use basic authentication, users need QuickTime 4.1 or later. Users must enter their user names and passwords to view the media file. Users who try to access a media file with an earlier version of QuickTime will see the error message “401: Unauthorized.”

## Adding User Accounts and Passwords

You can add a user account and password if you log in to the server computer.

### To add a user account:

- 1 Log in to the server computer as root, open a terminal window, and type the following:

```
qtpasswd -f <user filename> <user-name>
```

Alternatively, use sudo to execute the command as root. See “Executing a Command With sudo” on page 44.

- 2 Enter a password for the user and reenter it when prompted.

## Adding or Deleting Groups

You can edit the /Library/QuickTimeStreaming/Config/qtgroups file with any text editor as long as it follows this format:

```
<groupname>: <user-name1> <user-name2> <user-name3>
```

For Windows, the path is c:\Program Files\Darwin Streaming Server\qtgroups. For other supported platforms, it is /etc/streaming/qtgroups.

- To add or delete a group, simply edit the group file you set up.

## Making Changes to the User or Group File

You can make changes to the user or group file if you log in to the server computer.

### To delete a user from a user or group file:

- 1 Log in to the server computer as administrator and use a text editor to open the user or group file.
- 2 Delete the user name and encrypted passwords line from the user file.
- 3 Delete the user name from the group file.

### To change a user password:

- 1 Log in to the server computer as root, open a terminal window, and type the following:

```
qtpasswd <user-name>
```

Alternatively, use `sudo` to execute the command as root. See “Executing a Command With `sudo`” on page 44.

- 2 Enter a new password for the user. The password you enter replaces the password in the file.

## Installing SSL

SSL stands for Secure Sockets Layer. It’s a protocol that provides encrypted communications on the Internet.

Before you enable secure administration in QuickTime Streaming Server (QTSS) or Darwin Streaming Server (DSS), you must get a valid certificate signed by a certificate authority such as VeriSign or Thawte. Install the certificate in `/Library/QuickTimeStreaming/streamingadminserver.pem` (for Mac OS X) with the information from your certificate file. For Windows, install the certificate in `c:\Program Files\Darwin Streaming Server\streamingadminserver.pem`. In other supported platforms, install it in `/etc/streaming/streamingadminserver.pem`.

**Warning** If you enable SSL support in Streaming Server Admin, your browser must also support SSL. If it doesn’t, you will not be able to access Streaming Server Admin. If there is a firewall or proxy between the computer on which you are running your browser and Streaming Server Admin, make sure that the firewall or proxy allows SSL requests to pass through. Also, make sure that any routers or NATs (Network Address Translators) between your remote computer and the streaming server allow port 1240 communication.

You need to install the OpenSSL library and `Net::SSL` to support the security functions of DSS. You can get OpenSSL from [www.openssl.org](http://www.openssl.org). You can get `Net::SSL` from [www.perl.com](http://www.perl.com).

## Using Automatic Unicast (Announce) With QTSS or DSS on a Separate Computer

You can broadcast from QuickTime Broadcaster to QuickTime Streaming Server (QTSS) or to Darwin Streaming Server (DSS) running on a separate computer using the Automatic Unicast (Announce) transmission method. You’ll need to create a broadcaster user account on the streaming server. This will allow an SDP file to be created on the server. The user name and password that you specify will be entered through QuickTime Broadcaster.

You will need to upgrade your streaming server to QTSS or DSS 4.0 or later if you have an earlier version. If QuickTime Broadcaster is running on the same computer as QuickTime Streaming Server, a broadcaster user account is not required.

### **To create a user account on the streaming server:**

- 1 Create a file named `qtaccess` in your streaming server `Movies` directory.
- 2 If you wish to let anyone broadcast to your server, enter the following lines in the file:

```
<Limit WRITE>
require any-user
</Limit>
require any-user
```

- 3 If you want to limit broadcaster access to the server, enter the following lines in the file:

```
<Limit WRITE>
require user someUserName
</Limit>
require any-user
```

where `someUserName` is a broadcaster user name of your choosing.

- 4 Save the file as plain text (not .rtf or any other file format).
- 5 *For QTSS or DSS 4.1 or later:* Click “Change Movie Broadcast Password” in General Settings in Streaming Server Admin.

Enter the new user name and then the new password (twice) in the dialog, and click Change Password. You’re done.

*For QTSS or DSS version 4.0:* Log in as root (or administrator in Windows) and open a terminal window. Alternatively, use `sudo` to execute the command below as root. See “Executing a Command With `sudo`” on page 44.

As root (or administrator in Windows), type the following (where `someUserName` is a broadcaster user name of your choosing):

```
qtpasswd someUserName
```

You will be prompted for a password twice. After each prompt, enter the password for the new user you are creating.

Example:

```
[host:~] root# qtpasswd broadcastuser
Adding userName broadcastuser
New password:
Re-type new password:
[host:~] root#
```

### Executing a Command With `sudo`

If you are logged in as an administrator, you can use `sudo` to execute a command as if you were the root user (administrator in Windows). This way you don’t have to enable the root account to make changes that require root privileges.

**To execute a command as root:**

- Open a terminal window and type `sudo` followed by a space and then the command you want to execute. You will be prompted for an administrator password before the command executes.

For example, to execute the kill command using sudo, you would enter the following in a terminal:

```
[host:~] user# sudo kill 529 530
```

where 529 and 530 are process IDs.

For more information about sudo, enter `man sudo` in a terminal.

### Streaming on Port 80

If you are setting up a streaming server on the Internet and you think some of your clients are behind firewalls that allow only web traffic, enable streaming on port 80. This lets the streaming server accept connections on port 80, the default port for web traffic, and QuickTime clients will be able to connect to your streaming server even if they are behind a web-only firewall. If you enable streaming on port 80, make sure you disable any Web server on the same computer that may conflict with your streaming server.

### Firewalls and Networks With Address Translation

The streaming server sends data using User Datagram Protocol (UDP) packets. Firewalls designed to protect information on a network often block UDP packets. Client computers located behind a firewall that blocks UDP packets can't receive streamed media. However, the streaming server also allows streaming over HTTP connections, which allows streamed media to be viewed through even very tightly configured firewalls.

Some client computers located on networks that use address translation may also be unable to receive UDP packets, but they can receive media that's streamed over HTTP connections.

If users have problems viewing media through a firewall or via a network that uses address translation, they should upgrade their client software to QuickTime 5 or later. If users still have problems, their network administrators should provide them with the appropriate settings for the Streaming Proxy and Streaming Transport settings on their computers.

Network administrators can also set their firewall software to permit RTP and RTSP throughput.

### Problems

This section provides information on what to do if you encounter certain problems while streaming media.

## Streaming Server Admin Is Not Responding

- Verify that the `streamingadminserver.pl` script is running. If not, log in as root (or administrator in Windows), open a terminal window, and start the Streaming Server Admin process by typing  

```
/usr/sbin/streamingadminserver.pl
```
- Alternatively, use `sudo` to execute the command as root. See “Executing a Command With `sudo`” on page 44.

## The Server Doesn't Start Up or Quits Unexpectedly

- Check the error log.
- Make sure the `QuickTimeStreamingServer` file (for QTSS) or the `DarwinStreamingServer` file (for DSS) is in the `/usr/sbin/` directory.

## The Streaming Server Computer Crashes or Is Restarted

- With QuickTime Streaming Server (QTSS) 4.1 or later, when the computer restarts, playlists start up automatically. With QTSS 4.0, once the computer starts up, you may need to restart playlists, even if Streaming Server Admin indicates they are playing.
- Make sure the streaming server is running before you restart the playlists.
- If you were using the streaming server to relay broadcasts using the Default Relay feature, you need to restart the broadcasts on the other streaming servers that were relaying to this server using the RTSP Announce protocol. Likewise, any TCP or RTSP Announce relays must be restarted on the server after it has restarted.

## Media Files Do Not Stream Properly

- Try streaming a sample movie to see if the server can stream it. A sample movie is included with the server.

If the server streams the sample movie, the problem may be with the way your movie file is prepared. Recreate the movie.

If the sample movie doesn't stream, the problem may be with the server computer or the network.

- Check streaming server activity and, if necessary, reduce the maximum number of connections or throughput.
- If the problem occurs on a client computer, make sure the user has the appropriate Streaming Proxy and Streaming Transport settings. The administrator for the client computer's network should be able to provide the correct settings.
- Make sure the client software supports the file format being broadcast.
- Check the structure of the URL.

- Check the playlist. If you created a looping playlist containing hinted MPEG-1 QuickTime files, QuickTime clients will likely have problems viewing the stream.

### Streaming Performance Seems Slow

- If you are streaming QuickTime movies, make the movies self-contained using QuickTime Player Pro or other authoring application, and make sure hinting is optimized for streaming services.
- Reduce the maximum number of connections or the maximum throughput.
- Turn off other services.
- If users can't see the live streamed media, make sure you are capturing a signal from the audio or video equipment into the computer you're using for capture and encoding.
- Make sure the SDP file is located in the media directory on your streaming server.

### Users Can't Connect to Your Broadcast

- Make sure the client computer has QuickTime 4 or later installed. If users are connecting using a web browser, be sure the QuickTime 4 Plugin is installed correctly.
- Make sure users have the correct URL.
- If users are trying to connect to a broadcasted playlist, make sure the broadcast description file contains the correct IP address, destination base port, and path name for the Session Description Protocol (SDP) file.
- If users are attempting to connect to your broadcast over HTTP, make sure you disable any web server that may be conflicting with your streaming server. Also, make sure streaming on port 80 is enabled in the General Settings pane of Streaming Server Admin.

### Users See Error Messages While Streaming Media

Here's what the messages mean:

*Error code 401:* The user has tried to get access to a protected file. Users may need to upgrade to QuickTime 5 or later.

*Error code 404:* The server cannot locate the URL the user entered. Make sure users enter the correct URL for the broadcast. Tell users not to attempt to view media in a web browser by typing an RTSP URL directly into the web browser's location address. RTSP URLs are used only with the Open URL command of QuickTime Player.

*Error code 415:* The movie file is not hinted or has a compressed movie resource. You need to hint the movie again using the Pro version of QuickTime Player. Alternatively, you may be attempting to natively serve MP3 files on demand (that is, as an HTTP download). QTSS or DSS support of MP3 streams is intended for shoutcast/icecast-compatible live streams (such as those created by a streaming playlist) or live streams of other compatible MP3 live encoder broadcasters. If you wish to serve individual MP3 files on demand (not as live streams), simply host the files on a web server.

*Error code 453:* The server is too busy for users to view the stream. Users should try again later. You may want to increase the maximum number of connections in the General Settings pane of Streaming Server Admin.

*Error code 454:* The connection to the server was dropped. Users must start viewing the stream again. Check if the server is behind a firewall or the client is behind Network Address Translation (NAT) software. See “Streaming on Port 80” and “Firewalls and Networks With Address Translation” under Security.

*Error code -5420:* The server may not be running. Check the streaming server and restart it if necessary. Check if the server is behind a firewall or the client is behind Network Address Translation (NAT) software. See “Streaming on Port 80” and “Firewalls and Networks With Address Translation” under Security.

### **Users Can't See Live Streamed Media**

- Make sure you are broadcasting a signal from the audio or video equipment into the computer you're using for broadcast and encoding.
- If necessary, make sure the Session Description Protocol (SDP) file is located in the media folder you set up on your streaming server.

### **You're Having Problems With Playlists**

If you enable logging, you can use the log file to troubleshoot problems that occur during the broadcast.

Playlists with problems appear in the Available Playlists list with an alert icon next to the name. Click the icon to view any error or warning messages.

- If the media in the playlist is not being broadcast, check Streaming Server Admin to make sure the streaming server is running. If the streaming server is running, make sure a process called PlaylistBroadcaster is running on the server computer. If it is running, stop the broadcast, delete the SDP file for the broadcast from the streaming server media directory, then restart the broadcast. A new SDP file is generated when you restart the broadcast.
- If the media in the playlist is not being broadcast randomly, make sure the weighted random play mode is specified. You must stop and start the broadcast for the changes to take effect.



- If the media plays once and then stops, make sure the play mode is set to either Sequential Looped or Weighted Random. If you broadcast the playlist as weighted random and set a value other than zero for repeated items, make sure the value is less than the number of media files in the playlist. You must stop and start the broadcast for the changes to take effect.
- If some media in the playlist are not played, check the weight you have assigned to each media file in the playlist. You must stop and start the broadcast for the changes to take effect.
- If a movie playlist isn't streaming correctly, be sure the content, format, and encoding of the media are the same for all files in the playlist. Also, make sure users have QuickTime 4 or later installed on their computers.
- If your playlist contains movies with different encodings, the encodings that don't match the encoding of the first movie in the playlist (also known as the `sdp_reference_movie`) won't be played. You can play movies with different encodings in the playlist if the first movie in the playlist contains all the encodings you plan to use.

## Advanced

This section answers questions raised by more advanced users.

### How do I bind the Streaming Server Admin computer to a single IP address if my machine is multihomed?

A line in the `streamingadminserver.conf` file tells the server what IP address it should bind to. For example, the line

```
bind=1.2.3.4
```

tells the server to bind to the local IP address 1.2.3.4.

#### To specify a single IP address:

- 1 Log in to the server as an administrator.
- 2 Open or create the `streamingadminserver.conf` file. The file is in the following locations:

QTSS 4:

```
/Library/QuickTimeStreaming/Config/streamingadminserver.conf
```

DSS 4 (Windows):

```
\Program Files\Darwin Streaming Server\streamingadminserver.conf
```

DSS 4 (other supported platforms):

```
/etc/streaming/streamingadminserver.conf
```

- 3 Insert the following lines in the streamingadminserver.conf file:  

```
ssl=0  
bind=<IP address to bind to>
```
- 4 Save the file as a plain text file (not .rtf or other format).
- 5 For the change to take effect, kill the Streaming Server Admin process and then restart the server.

### How do I bind QTSS or DSS to a single IP address if my machine is multihomed?

The `bind_ip_addr` property in the `streamingserver.xml` file tells the server what IP address it should accept. For example, a value of zero in

```
<PREF NAME="bind_ip_addr">0<PREF>
```

means that all IP addresses are enabled for the server.

#### To specify a single IP address:

- 1 Log in to the server as an administrator.
- 2 Open the `streamingserver.xml` file and look for the `bind_ip_addr` property. The file is in the following locations:

QTSS 4:

```
/Library/QuickTimeStreaming/Config/streamingserver.xml
```

DSS 4 (Windows):

```
\Program Files\Darwin Streaming Server\streamingserver.xml
```

DSS 4 (other supported platforms):

```
/etc/streaming/streamingserver.xml
```

- 3 Replace the zero with the IP address to which you wish to bind (for example, 192.168.1.1):  

```
<PREF NAME="bind_ip_addr">192.168.1.1<PREF>
```
- 4 Save the file as a plain text file (not .rtf or other format).
- 5 For the change to take effect, kill the QTSS or DSS processes that are running and then restart the server.

## How do I kill and restart the QuickTime Streaming Server processes in Mac OS X Server?

### To kill the QuickTime Streaming Server (QTSS) processes:

- 1 Find the process ID (PID) for each process, then enter a command in Terminal to “kill” the processes and restart QTSS.

You must be logged in as root to perform this task.

- 2 Open the Terminal application in the Finder and enter the following:

```
ps -ax | grep QuickTimeStreamingServer
```

Text similar to the following should appear:

```
949 ?? Ss0:00.00 /usr/sbin/QuickTimeStreamingServer
950 ?? S 0:00.13 /usr/sbin/QuickTimeStreamingServer
965 std S+0:00.00 grep QuickTimeStreamingServer
```

- 3 Find the process IDs of the QuickTimeStreamingServer processes. In this example, they are 949 and 950. To kill them, enter the following:

```
kill 949 950
```

- 4 Finally, restart the server by entering the following:

```
QuickTimeStreamingServer
```

## How do I kill and restart Streaming Server Admin processes in Mac OS X Server?

To kill and restart Streaming Server Admin processes, you need to find the process ID (PID) for the streamingadminserver process, enter a command in Terminal to kill the process, and then restart Streaming Server Admin.

You must be logged in as root to perform this task.

### To kill and restart a process:

- 1 Open the Terminal application in the Finder and enter the following:

```
ps -ax | grep streamingadminserver
```

Text similar to the following should appear:

```
947 ?? Ss      0:00.00 /usr/sbin/streamingadminserver.pl
970 std S+      0:00.00 grep streamingadminserver
```

- 2 Find the process ID of the streamingadminserver process. In this example, it is 947. To kill the process, enter the following:

```
kill 947
```

- 3 Finally, restart Streaming Server Admin by entering the following:

```
streamingadminserver.pl
```

### How do I get QTSS to re-read its preferences without killing or restarting the server?

One way to do this is to use Streaming Server Admin. Using your web browser, go to `http://qtss.domain.com:1220`, for example, and stop and start the streaming server via the web interface. If you use this method, currently connected users will be disconnected.

Alternatively, you can send the child process of QuickTimeStreamingServer an HUP (-1) signal. Currently connected users will not be disconnected, but this method is a little trickier.

You must be logged in as root to perform this task.

#### To get QTSS to re-read its preferences:

- 1 Open the Terminal application in the Finder and enter the following:

```
ps -ax | grep QuickTimeStreamingServer
```

Text similar to the following should appear:

```
949 ?? Ss      0:00.00 /usr/sbin/QuickTimeStreamingServer
950 ?? S       0:00.13 /usr/sbin/QuickTimeStreamingServer
965 std S+     0:00.00 grep QuickTimeStreamingServer
```

- 2 Find the larger of the two process IDs (PIDs) for the QuickTimeStreamingServer processes. In this case, it is 950.
- 3 To send an HUP signal to this child process, enter the following:

```
kill -HUP 950
```

### How do I configure QTSS to host streams from multiple user media directories?

QuickTime Streaming Server can have one only main media directory. However, you can create symbolic links within this directory. This allows users to have read/write access to their own secure streaming media folders and to access the streams via RTSP (Real-Time Streaming Protocol) from a single QTSS media folder. Also, users do not need read/write access to the main QuickTime Streaming Server Movies directory (`/Library/QuickTimeStreaming/Movies/`).

You need to be logged in as the administrator to create these links.

Here's a simple way to configure the QTSS media directory so that multiple users (`user1`, `user2`, and `user3`, for example) have write access to their own independent movie directories:

### To configure QTSS to host streams from multiple media directories:

- 1 For each individual user, make a local movie library in each user's home directory. For example:  

```
/Users/user1/Movies/  
/Users/user2/Movies/  
/Users/user3/Movies/
```
- 2 Set each directory to be owned by its user, and give each user read/write access to his or her own files.
- 3 In your QTSS media directory, create symbolic links that point to each user's private movie directory. For example, in Terminal, enter:

```
cd /Library/QuickTimeStreaming/Movies  
ln -s /Users/user1/Movies user1  
ln -s /Users/user2/Movies user2  
ln -s /Users/user3/Movies user3
```

This will produce the following:

```
/Library/QuickTimeStreaming/Movies/user1 -> /Users/user1/Movies  
/Library/QuickTimeStreaming/Movies/user2 -> /Users/user2/Movies  
/Library/QuickTimeStreaming/Movies/user3 -> /Users/user3/Movies
```

- 4 Ask users to upload their hinted QuickTime movies to their own movie directories. For example:

```
/Users/user1/Movies/sample.mov  
/Users/user2/Movies/test_abc.mov  
/Users/user3/Movies/xyz.mov
```

Users can use RTSP URLs such as the following to stream movies from each user's private movie directory:

```
rtsp://qtss.domain.com/user1/sample.mov  
rtsp://qtss.domain.com/user2/test_abc.mov  
rtsp://qtss.domain.com/user3/xyz.mov
```



## Setup Example

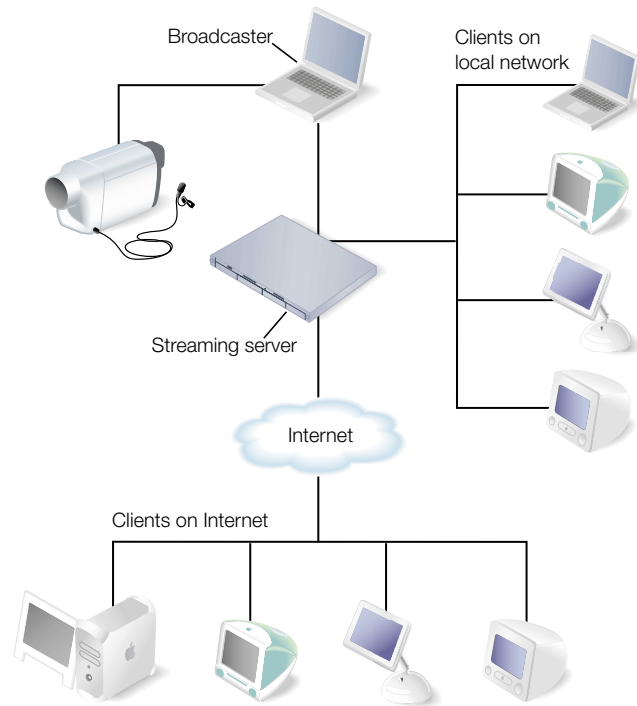
This chapter describes the key components needed for a generic webcasting setup and how they are connected together. The setup instructions that follow assume an educational setting, such as a university campus. But the example can be easily adapted for varied uses, including

- distance learning classes
- corporate communications to employees, customers, suppliers, or shareholders
- one-time concert or presentation
- childcare center broadcasts to parents

### **Streaming Presentations—Live and On Demand**

This example shows how a university network administrator might set up a streaming server and other needed components to stream classroom presentations, live and on demand, to students using client computers connected to the campus network and to the Internet.

Such a setup would make it possible for students unable to attend a class in person to view it online. It would also enable students who want to review parts of the lecture later to play an archived version on their computers.



The streaming setup in this example, shown above, has these features:

- A local network with Ethernet connections to classrooms and lecture halls from which live presentations are to be streamed already exists.
- A digital video (DV) camera and microphone are set up in a classroom or lecture hall to convert the live presentation to digital form. The camera makes a high-quality DV recording of the presentation and provides the digital signal that is to be encoded for live streaming.
- The DV camera is connected through a FireWire port to a laptop running QuickTime Broadcaster, which encodes the digitized live presentation and transmits the signal via an Ethernet connection to the streaming server on the campus network.
- The streaming server is a rack-mounted Xserve running “headless” (without a monitor and keyboard). The server is running Mac OS X Server with QuickTime Streaming Server (QTSS) configured to reflect the encoded live presentation as a unicast stream to each client computer on the campus network and on the Internet that “tunes in” to the broadcast. The Xserve comes with Mac OS X Server and QTSS preinstalled.



- Client computers of various types with QuickTime Player or other MPEG-4 compliant software installed can access the Xserve streaming server via the campus network. Other client computers can access the streaming server via the Internet.
- The broadcaster laptop running iMovie is used to produce high-quality on-demand versions of a live presentation after the presentation is concluded. The recorded digitized presentation is brought into the computer for compression through its FireWire connection using the DV camera.

**Note:** QuickTime Broadcaster can be set to record the encoded live stream to disk for archival purposes. However, it is desirable to encode the footage separately to achieve higher quality results.

- The broadcaster laptop is also used to control the Xserve remotely through the laptop's browser and the QTSS web-based Streaming Server Admin user interface.

**Note:** The laptop could also be connected to the local network wirelessly via an AirPort base station for extra portability. The AirPort is 802.11 compliant and works fine with QTSS. Its 11 megabits per second (Mbps) of bandwidth would be more than enough for our example setup unless other clients were also placing heavy demands on the same base station.

## Setting It Up

The following steps show how to set up QuickTime Streaming Server and the other components needed for live and on-demand streaming in this hypothetical university setting.

### Step 1: Prepare the Location

It will probably not be possible to find classrooms on a typical campus that provide a broadcasting and recording environment comparable to a professional television or recording studio. Still, there are measures that you can take to ensure reasonably good results:

- Go into a classroom or lecture room that you want to use for live streaming, close the doors, and listen for extraneous noise that could interfere with a broadcast. If noise from a nearby break room, video gaming area, street traffic, or other source is noticeable and can't be eliminated, find another room.
- If extraneous noise is not an issue, stand in the center of the room, clap your hands or shout, and listen for an echo. If you hear an echo, the sound quality of a live broadcast can be compromised. You can reduce or eliminate echoes by hanging heavy curtains on bare walls or placing acoustic panels in a checkerboard pattern on each wall.
- Next, examine the floors and furniture. Carpeted floors and padded chairs are best. A lectern should have a cloth on top, or other padded surface, to protect against noises such as the speaker's setting down a glass of water.

- Windows can cause lighting problems. For more control, you should be able to draw the blinds and supplement room lights with a portable lighting kit that can be quickly set up for a live session.

## **Step 2: Prepare the Network**

Check that there is an Ethernet connection to the classroom or lecture hall where the live broadcast is to take place. Install, repair, or replace cables and connectors as needed, using high-quality materials.

Bear in mind that streaming—especially live streaming—can make heavy demands on network resources, especially available bandwidth. To ensure that the network can handle the extra load, it may be necessary to do some or all of the following:

- Determine the capacity of the existing network and calculate the anticipated additional traffic generated by live and on-demand streaming.
- Draw a map of bandwidth segments on your network, listing the capacity between all points.
- Determine which applications are used in your network, their use patterns, where they are hosted, and the bandwidth they normally use during peak and off-peak times.
- Based on the configuration and capacities of your network, select the appropriate place to install your streaming server, avoiding potential bottlenecks.
- If necessary, add capacity to the network (additional T1 lines, routers, switches, and so on) to handle the anticipated maximum number of concurrent viewers of live broadcasts in addition to other peak network traffic.

Keep in mind that a typical local network provides bandwidth internally of 10–100 Mbps. In contrast, a T1 line, frequently used to connect to the Internet, provides only about 1.5 Mbps of bandwidth.

T1 lines work fine for HTTP and FTP, where the requests are either short lived or are not time sensitive, but streaming is much more demanding. With streaming you can't slow things down. The data has to be transferred at least as fast as the original content data rate in order to deliver streams.

For this example, we will assume a maximum of 10 concurrent viewers, half on the local network and half on the Internet and a bit rate for each unicast stream of approximately 256 kilobits per second (Kbps). The peak extra bandwidth needed is then about 3.2–3.3 megabits per second (Mbps). This estimate includes an extra margin of 25–30 percent for unplanned network congestion and peaks in the transmitted streams that can occur for various reasons.

### Step 3: Set Up Your Streaming Server

An administrator computer must be set up before you can configure and manage your streaming server if, as in this example, the streaming server is running headless. For information on setting up an administrator computer, see “Setting Up an Administrator Computer” in *Getting Started With Mac OS X Server* (included on the Mac OS X Server CD).

Any computer with a reasonably up-to-date browser connected either directly to the local network or to the Internet can be used to manage QTSS remotely once Mac OS X Server has been configured. For this example, we assume that the broadcaster laptop in the streaming setup illustration is also used for this purpose.

Although the Xserve comes with Mac OS X Server and QTSS preinstalled, the software must be configured for the particular network to which it is being added and for the specific uses to which it is to be put. For information on setting up Mac OS X Server, see *Getting Started With Mac OS X Server* and *Mac OS X Server Administrator’s Guide*, included on the Mac OS X Server CD.

Among the questions to be answered when setting up your streaming server are the following:

#### **Can the server computer be dedicated solely to streaming?**

It’s best if your streaming server doesn’t also have to handle web serving, mail serving, and other server tasks. This example setup includes a dedicated streaming server.

#### **How much random access memory (RAM) is needed?**

The minimum required to run QTSS is 128 megabytes (MB). Estimate about 256 MB of RAM for every 50 MB of throughput you plan to serve. This setup assumes 256 MB of RAM.

#### **How much hard disk storage is needed?**

Video files can be large. A hinted one-hour presentation encoded at 300 Kbps (not optimized for a server) will take up approximately 135 MB of hard disk space. A 60-GB hard disk can store more than 400 such presentations.

**Note:** Here’s a formula for calculating streaming file sizes:

```
dataRateInBits / 8 bits * timeInSeconds = file size
```

Example for a one-hour 300-Kbps stream:

$300,000 / 8 \text{ bits} * 3600 = 135,000,000 \text{ bytes} = 135 \text{ MB file size}$

Many local networks these days include redundant arrays of independent disks (RAID) storage systems, which provide much larger amounts of hard disk space.

If you use a storage location for streaming files different from the QTSS default (/Library/QuickTimeStreaming/Movies), you'll need to enter the path to that location in the General Settings page of Streaming Server Admin. Place any Session Description Protocol (SDP) files referencing live webcasts in the same location so they can be recognized by QTSS.

In our example setup, all archived streaming files and SDP reference files reside in the default Movies folder of the streaming server.

**Does the streaming server have an adequate network card?**

The network card is a critical component of your streaming server, since it provides Ethernet connectivity between the server and your audience. An Ethernet card should provide a minimum of 100 megabytes (about 0.8 gigabit) per second of throughput.

**Where will the streaming server be located on the network? And what about a firewall?**

The streaming server must be located where it will be accessible to users (in our example, students) logging on from both the local network and the Internet. It also should be protected by a firewall against unauthorized access to the server and to the archived media files.

Mac OS X Server includes IP Firewall service, which scans incoming IP packets and rejects or accepts these packets based on a set of filters you create. For instructions on setting up this service, see "Firewall Service" in *Mac OS X Administrator's Guide*.

Specific ports need to be opened in the firewall to allow Real-Time Streaming Protocol (RTSP) requests from users, encoded video and audio from the broadcaster, and outbound streams to clients on the local network and the Internet. The table below lists the ports used by QuickTime Streaming Server and Darwin Streaming Server and for incoming and outgoing requests.

<b>Ports used to communicate with client</b>	554, 7070 TCP or 80 TCP
<b>Ports used to send media</b>	6970-6999 UDP, or 80 TCP
<b>Ports used to receive broadcast</b>	10000-65635 UDP
<b>Ports server will stream through</b>	554 RTSP 7070 TCP or 80 TCP
<b>Default port typically used by MP3 broadcasters</b>	8000 TCP
<b>Port used for remotely managing QTSS or DSS</b>	1220 TCP

In this example setup, we'll assume that the students connecting to the streaming server via the Internet are *not* behind their own firewalls. If that's the case, we won't enable streaming on port 80, the port typically carrying HTTP Internet traffic and allowed by most firewalls.

If some clients *are* behind firewalls, it may be desirable to enable streaming on port 80 for those clients to access the streams.

**To enable streaming on port 80:**

- 1 Click Port Settings in Streaming Server Admin.  
The Port Settings page displays.
- 2 Click the "Streaming on Port 80" checkbox, then click Save Changes.

**Important** If you enable streaming on port 80, make sure that your server is not also running a web server, such as Apache. Running both QTSS or DSS and a web server with streaming on port 80 enabled can cause a port conflict that results in one or both of the servers' not behaving properly.

### **Will it be necessary to set up a broadcaster user account on the streaming server?**

In this example setup, it will be necessary to create a broadcaster user account, because the encoding software and QTSS are on separate computers. This allows a Session Description Protocol (SDP) file to be created on the server by the encoding software, which QuickTime Broadcaster does automatically if the Automatic Unicast (Announce) transport mode is selected. The SDP file provides information about the format, timing, and authorship of a live streaming broadcast. Once specified, the user name and password will be entered through QuickTime Broadcaster.

For instructions on creating a broadcaster user account, see “Using Automatic Unicast (Announce) With QTSS or DSS on a Separate Computer” on page 43. You’ll need to use the administrator computer previously set up to create this account.

**Note:** The broadcaster user name and password can be changed using the StreamingServerAdmin UI, which in this example can be accessed from the laptop browser.

### **Finally, will users require authentication to access live or archived presentations?**

In our example setup, no authentication is necessary. However, if you want to restrict access to your streams, you’ll need to set up password-protected individual user or group accounts. For information on how to set up and manage such accounts, see the appropriate topics under Security in Chapter 2.

## **Step 4: Set Up for a Live Webcast**

For the example setup, the following items are needed:

- good-quality DV camera
- microphone placed near the speaker, either on a stand or clipped to the speaker’s clothing, connected by good-quality audio cable to the DV camera audio input
- sturdy tripod on which to mount the camera
- portable lighting kit

### **The Camera Is the First Link**

Since the camera is the first link in the video signal chain, it is very important. Two main things determine a DV camera’s picture quality:

- *Lens quality.* The better the lens, the better the image.
- *Image capture mechanism.* DV cameras use charge-coupled devices (CCDs) to convert the picture into electronic signals. The number and size of the CCDs affect the quality of the image.

Optical zoom gives better quality than digital zoom, but zooming should be avoided or kept to a minimum when streaming a live presentation to avoid degrading the stream.

Lower-end DV cameras use a single charge-coupled device (CCD) to capture the complete image, whereas higher-quality cameras use three separate CCDs to scan the red, blue, and green content of the image, giving a better quality scan. CCDs range in size from 1/4 inch to 2/3 inch; bigger CCDs give better resolution.

Here are other desirable features:

- You should be able to override automatic camera settings.
- You'll want to use a separate microphone that can plug into the camera for optimal sound pick-up. A built-in microphone is unsuitable for most situations.
- The camera should accept professional XLR plugs (as opposed to the 1/8-inch mini-jack connectors). It should also have a headphone jack for monitoring the audio input.
- Finally, a FireWire output enables digital transfers and automated capture, which can save time later.

### **Keep the Microphone Close**

The microphone is the first link in the audio signal chain and so is also very important. Dynamic microphones are a good all-around choice and can be purchased for as little as \$100.

The best way to improve audio if the room is “bad” is to place the microphone as close as possible to the person doing the speaking. Use a small lavalier (lapel) microphone clipped to the front of the speaker’s clothing immediately under the mouth, or use a handheld microphone.

In the case of a panel discussion, use multiple microphones, preferably on sturdy stands, and a small audio mixer. Connect the mixed stereo output from the mixer into the line input on the DV camera.

If using an external microphone or mixer, make sure that all the connectors are securely and fully plugged in to assure reliable audio. Plug a pair of headphones into the video camera’s headphone output to make sure that you can hear the audio at the video camera source and that it’s not distorted.

### **A Tripod Is a Must**

It’s important to use a camera tripod when shooting a live presentation, and also to avoid pans, tilts, and zooms. If the camera moves just one degree, every pixel in the frame changes, multiplying the difficulty of encoding the stream adequately. What was a simple scene to encode suddenly becomes much more difficult.

The tripod should be lightweight while still providing stable support for the camera’s weight.

## Get a Simple Lighting Kit

Even a high-quality video camera will produce poor results without proper lighting. It's unlikely that the normal lighting available will be adequate for shooting a live presentation in a classroom, for example. At a minimum, you'll probably want to add back lighting to make your subject stand out from a dull background.

Lighting is a big subject in and of itself and beyond the scope of this guide. Suffice it to say that a portable lighting kit supporting three-point lighting (plus a reflector or two if you're planning to shoot outside) can greatly improve your results.

## Step 5: Set Up Broadcaster

In this example setup, QuickTime Broadcaster is installed on a PowerBook laptop. This encoding software is included on the Mac OS X Server CD and can also be downloaded free of charge from the QuickTime Broadcaster web site at <http://www.apple.com/quicktime/products/broadcaster/>

To install QuickTime Broadcaster, double-click the installer package (QuickTimeBroadcaster.pkg) and follow the on-screen instructions.

Once the encoder software is installed, plug the camera into the laptop using FireWire, turn the camera on, and see if QuickTime Broadcaster recognizes it.

- 1 Open QuickTime Broadcaster and, if necessary, click the Show Details button.
- 2 Click the Video tab and choose a video source from the Source pop-up menu.

If the camera is recognized, it will appear in the Source menu and a preview image should display (if the preview function is on). Video settings should also be active (not dimmed).

If the camera doesn't appear in the Source menu, quit QuickTime Broadcaster, make sure your camera is connected and turned on, then open QuickTime Broadcaster again. If your camera still does not appear, check the QuickTime web site or the Apple Knowledge Base for information on compatibility and other issues.

When broadcasting to QTSS on a separate computer, as in this example setup, Automatic Unicast (Announce) is the recommended transmission method. It's easy to set up.

- 1 If necessary, click the Show Details button in QuickTime Broadcaster, then click the Network tab, and choose Automatic Unicast (Announce) from the Transmission pop-up menu.
- 2 In the Network pane, enter the IP address or host name of the receiving server (the Xserve in this example), a name for the broadcast file, the user name and password for the broadcaster user account on the streaming server created in Step 3, and the buffer delay (or accept the default).

**Note:** The buffer delay sets the number of seconds QuickTime buffers the broadcast before playback. For broadband connections, QuickTime Player 6 or later fills the buffer more quickly than real-time providing an "Instant-On" viewing experience.



- 3 Click Broadcast and, if necessary, start QTSS using Streaming Server Admin from the laptop's browser by typing in the browser window

`http://streamingserverip:1220`

where `streamingserverip` is the IP address of the streaming server.

Then enter the user name and password and click Start Server.

To find out if the live stream can be seen from a client, open QuickTime Player on one of the client computers and do the following:

- 1 Choose Open URL in New Player from the File menu.
- 2 Enter the Real-Time Streaming Protocol (RTSP) URL displayed in the Location section of the QuickTime Broadcaster window (for example, `rtsp://myserver.com/mystream.sdp`).

**Note:** The URL is case-sensitive and must be entered exactly as displayed in the QuickTime Broadcaster window.

The live stream should start playing in QuickTime Player.

### **Step 6: Test Your Setup**

The last step is to test the setup. This should be done as realistically as possible.

- Set up your equipment just as it will be used for the live presentation, if possible in the actual location to be used.
- Ask a colleague to stand in for the presenter, or better yet, have the presenter take part in the test, making it a “dress rehearsal.”
- Check the video image and the sound.
- Check that clients both on the local network and on the Internet can tune in to the live stream.
- Adjust the camera and microphone positions and lighting as necessary and troubleshoot any other problems.

### **Creating a Web Page for Easy Access**

Enabling access from a web page eliminates the cumbersome process for students of remembering the RTSP URL and names of the streaming server and SDP files.

In our example setup, the web page can be added to the existing university web site, but it can reside on any web server. Then students can access the live presentation (and the archived presentations, too) by simply clicking on links that show up in their browser windows.

From within an embedded “reference movie,” you can direct client players to on-demand presentations encoded for different connection speeds to give users the best possible viewing experience.

For instructions on creating a web page with links to streamed media, see “Setting Up a Web Page With Streamed Media” on page 32.

## Shooting the Live Presentation

If all the preparatory work has been done, as outlined above, and the equipment and connections have been thoroughly tested, shooting the live presentation should be straightforward.

Here are a few tips for avoiding problems during the event:

- On the day (or evening) of the actual event to be streamed live, set up early so you have time to check once again that all components are working as expected.
- If an audience is to be present, let them know in advance that you will be webcasting the presentation live and ask for their cooperation.
- Tape down any cables strung along the floor to minimize tripping hazards.
- Check for potential sources of extraneous noise and take abatement measures if possible.

## Archiving the Live Presentation

In the example setup, the iMovie application that comes with Mac OS X is available on the laptop. iMovie is used to import the recorded DV footage from the camera tape and then to encode and archive taped live presentations after they have occurred.

To archive a live presentation, first import the recorded DV footage.

- 1** Connect the DV camera to the laptop using FireWire and turn on the camera.
- 2** Insert the tape with the video footage to be archived into the camera and switch to VTR mode.
- 3** Open iMovie on the laptop and in the iMovie UI set the Mode Switch under the iMovie monitor to Camera mode by dragging the round blue slide toggle toward the DV camera icon.
- 4** Use the Camera mode playback controls to view a portion of the tape in the iMovie monitor. If the tape doesn't play, check the connections and make sure the camera is turned on.
- 5** Rewind the tape to a few seconds before the point where you want to start importing.
- 6** Click Play below the iMovie monitor.

7 Click Import when you see the point in the presentation where you want to start importing.

8 Click Import again when you want to stop importing.

If you get some footage that you don't want to include in your archived presentation, you can edit it later using iMovie.

**Important** You'll need to monitor hard disk space as you import video and create your iMovie. One minute of DV footage uses about 220 MB of hard disk space, so a one-hour presentation can use up more than 13 gigabytes of disk space. The Free Space status bar, below the clip shelf, shows how much disk space is available at any point in the import process.

Next, use iMovie to compress and encode the DV footage for streaming.

1 In iMovie, choose Export Movie from the File menu.

2 Choose To QuickTime from the "Export Movie" pop-up menu.

3 Choose a movie format from the Formats pop-up menu.

You can choose one of the QuickTime formats optimized for different uses or choose Expert. Expert lets you use custom QuickTime settings, such as MPEG-4 Video.

4 Click Export.

5 Name your movie, select a destination for the file, and click Save.

The time it takes to save the movie depends on the movie's length and the format you chose.

**Note:** You may want to save more than one archive streaming file, each compressed for a different connection speed. For example, you might choose lower compression settings for clients on the campus network and higher compression settings for clients connecting over the Internet.

6 After you have saved the encoded file or files, check to make sure every file streams properly, and you're ready for the next archiving session.





# Glossary

This glossary defines terms and spells out abbreviations you may encounter while working with online help or the *QTSS and DSS Administrator's Guide*. References to terms defined elsewhere in the glossary appear in italics.

## A

**access file** A text file called *qtaccess* that contains information about users and groups who are authorized to view media in the directory in which the access file is stored.

**administrator** A user with server or directory domain administration *privileges*.

**administrator computer** A computer with server administrator software installed that can be used to configure and manage another computer.

**announced broadcast** A method such as *Automatic Unicast (Announce)* enabling a broadcaster to negotiate with a server to accept a broadcast.

**AppleScript** A scripting language with English-like syntax, used to write script files that can control your computer. AppleScript is part of the Mac operating system and is included on every Macintosh.

**Automatic Unicast (Announce)** A method of delivering a broadcast to a streaming server in which an SDP file is automatically copied and kept current on the server. A *broadcast user* name and password must be created before starting such a broadcast.

**AVI (Audio Visual Interleave)** A Windows video file format.

## B

**bandwidth** The capacity of a network connection, measured in *bits* or *bytes* per second, for carrying data.

**bit** A single piece of information, with a value of either 0 or 1.

**bit rate** The speed at which bits are transmitted on a network, usually expressed in bits per second.

**broadcast** Transmitting one copy of a stream over the whole network.

**broadcast user** A user who has permission to broadcast to the streaming server. The broadcast user name and password are set in the General Settings pane of Streaming Server Admin and are used in conjunction with *announced broadcasts*. It is not necessary to create a broadcast user for *UDP* broadcasts.

**browser plug-in** Software that you attach to a browser to enable it to display specific data formats.

**byte** Eight *bits*.

## C

**client** The user-side software or computer used to display *streaming* media.

**codec** Any technology for compressing and decompressing data. Codecs can be implemented in software, hardware, or a combination of both.

**CVS** Concurrent Versions System, a programming code management system.

## D, E

**data rate** Amount of information per second.

**DNS (Domain Name Service)** A service that translates host names to *IP addresses*.

**DSL (digital subscriber line)** A broadband data transmission technology that operates over telephone lines.

**DV (digital video)** A digital tape-recording format using approximately 5:1 compression to produce Betacam quality on a very small cassette.

## F, G

**firewall** Software that protects the network applications and networking stack of a server. IP Firewall service, which is part of Mac OS X Server software, scans incoming *IP packets* and rejects or accepts these packets based on a set of filters you create.

**FireWire** A hardware technology for exchanging data with peripheral devices, defined by *IEEE* Standard 1394. Also called iLink.

**frame** A single image in a *movie* or sequence of images.

**frame rate** In a *movie*, the number of frames per second.

**FTP (File Transfer Protocol)** A *protocol* that allows computers to transfer files over a network. *FTP clients* using any operating system that supports FTP can connect to a file server and download files, depending on their access *privileges*. Most Internet browsers and a number of freeware applications can be used to access an FTP server.

## H

**hinting** Hinting creates a *track* for each streamable media track in the file that tells QuickTime Streaming Server how and when to deliver each frame of media. The hinting process performs in advance the required calculations, allowing *QTSS* to serve up a larger number of streams. Hinting also allows new codecs to be used without the need to upgrade the server.

**HTML (Hypertext Markup Language)** The code inserted in a file to be displayed on a web browser page. The markup tells the web browser how to display a web page's words and images for the user.

**HTTP (Hypertext Transfer Protocol)** An application *protocol* that defines the set of rules for linking and exchanging files on a network.

## I

**IEEE** The Institute of Electrical and Electronics Engineers, Inc., an organization dedicated to promoting standards in computing and electrical engineering.

**Instant On** An advance in Apple's patent-pending Skip Protection technology that dramatically reduces buffer, or wait, time for an instantaneous viewing experience with *streaming* video on a broadband connection.

**IP (Internet Protocol)** A connectionless protocol used to transmit *packets* of data from one machine to another. *TCP* and *UDP* use IP for their host-to-host data communications.

**IP address** A unique numeric address that identifies a computer on the Internet.

**IP subnet** A portion of an *IP* network, which may be a physically independent network segment, which shares a network address with other portions of the network and is identified by a subnet number.

**ISP (Internet service provider)** A business that sells Internet access and often provides web hosting for ecommerce applications as well as mail services.

## J, K, L

**JavaScript** A scripting language used to add interactivity to web pages.

**key frame** A sample in a sequence of temporally compressed samples that does not rely on other samples in the sequence for any of its information. Key frames are placed into *temporally compressed sequences* at a frequency that is determined by the *key frame rate*.

**key frame rate** The frequency with which *key frames* are placed into temporally compressed data sequences.

**LAN (local area network)** A network maintained within a facility, as opposed to a WAN (wide area network) that links geographically separated facilities.

**layer** A mechanism for prioritizing the *tracks* in a movie or the overlapping of *sprites*. When it plays a movie, *QuickTime* displays the movie's images according to their layer—images with lower layer numbers are displayed on top; images with higher layer numbers may be obscured by images with lower layer numbers.

## M

**M3U file** An audio metafile that is created using a text editor and saved to a web server. The file directs a user's web browser to an MP3 playlist residing on the same web server and opens the user's MP3 player.

**Mac OS X** The latest version of the Apple operating system, which combines the reliability of UNIX with the ease of use of Macintosh.

**Mac OS X Server** An industrial-strength server platform that supports Mac, Windows, UNIX, and Linux clients out of the box and provides a suite of scalable workgroup and network services plus advanced remote management tools.

**Manual Unicast** A method for transmitting a live stream to a single QuickTime Player client or to a computer running *QTSS* or *DSS*. An SDP file is usually created by the broadcaster application and then must be manually sent to the viewer or streaming server.

**Mbone** Short for Multicast Backbone, a virtual network for real-time *streaming* over the Internet.

**MIDI (Musical Instrument Digital Interface)** A standard format for sending instructions to a musical synthesizer.

**modifier track** A *track* in a movie that modifies the data or presentation of other tracks. For example, a *tween* track is a modifier track.

**mount point** A string used to identify a live stream, which can be a relayed movie stream, a nonrelayed movie stream, or an MP3 stream. Mount points that describe live movie streams always end with an *.sdp* extension.

**MOV** The Apple QuickTime *movie* file extension used to name both movie redirect files and actual *QuickTime* media files.

**movie** A structure of time-based data that is managed by *QuickTime*. A QuickTime movie may contain sound, video, animation, or a combination of data types. A QuickTime movie contains one or more *tracks*; each track represents a single data stream in the movie.

**MP3 (MPEG layer 3)** A popular format for compressing music.

**MPEG-4** An *ISO* standard based on the QuickTime file format that defines multimedia file and compression formats.

**multicast** An efficient, one-to-many form of *streaming*. Users can join or leave a multicast but cannot otherwise interact with it.

**multihomed** A server with multiple *IP addresses*.



## N, O

**NAT (Network Address Translation)** A technique sometimes used so that multiple computers can share a single *IP address*.

**open source** A term for the cooperative development of software by the Internet community. The basic principle is to involve as many people as possible in writing and debugging code by publishing the source code and encouraging the formation of a large community of developers who will submit modifications and enhancements.

## P

**packet** A unit of data information consisting of header, information, error detection, and trailer records. *QTSS* uses *TCP*, *UDP*, and *IP* packets to communicate with streaming clients.

**pixel** A single dot in a graphic image with a given color and brightness value.

**playlist** A set of media files in the *QTSS* or *DSS* media folder specified to play one after the other or in random sequence.

**port** A sort of virtual mail slot. A server uses port numbers to determine which application should receive data *packets*. *Firewalls* use port numbers to determine whether or not data packets are allowed to traverse a local network. "Port" usually refers to either a *TCP* or *UDP* port.

**privileges** Settings that define the kind of access users have to shared items. You can assign four types of privileges to a share point, folder, or file: read and write, read only, write only, and none (no access).

**progressive download** Movie data that is pushed via *HTTP* to the client. The movie can be viewed by the user as it is being transferred. This is not a form of media *streaming*.

**protocol** A set of rules that determines how data is sent back and forth between two applications.

**proxy server** A server that sits between a client and server and negotiates communication between those two hosts. The client and server only communicate with the proxy server and never interact with each other. There are proxy applications for many network protocols, including *HTTP* (for web traffic) and *RTSP* (for streaming traffic).

## Q

**qtaccess** The name of the plain text *access file* that contains information about users and groups who are authorized to view media in the directory in which the access file is stored.

**QTSS (QuickTime Streaming Server)** A technology that lets you deliver media over the Internet in real time.

**QuickTime** A set of Macintosh system extensions or a Windows dynamic-link library that supports the composition and playing of *movies*.

**QuickTime Player** An application, included with the *QuickTime* system software, that plays QuickTime *movies*.

**QuickTime Pro** A version of *QuickTime Player* with advanced features, primarily the addition of editing capabilities.

## R

**RAID (Redundant Array of Independent Disks)** A hard disk array that either increases the speed of disk input-output or mirrors the data for redundancy, or provides both of these features. Users may access the RAID as if it were one drive, although it may be divided into multiple partitions.

**reference movie** A .mov file created using a utility program like MakeRefMovie, available at no cost from Apple for Macintosh and Windows. The file contains the location of a streaming media file and can also contain the locations of multiple streaming files. A reference file linked from a web page, for example, can direct a client player to the on-demand presentation encoded for its particular connection speed.

**reflected stream** A live broadcast delivered as a *unicast* stream. *Movie* and MP4 *playlists* also generate reflected streams.

**relayed stream** A stream that is passed from one server to one or more other servers. Relays can also be used to generate a *multicast* stream. *QTSS* does not support relaying of *MP3* streams.

**RTP (Real-Time Transport Protocol)** A network-transport protocol used for transmitting real-time multimedia content over *multicast* or *unicast* network services.

**RTSP (Real Time Streaming Protocol)** A *protocol* for controlling a stream of real-time multimedia content. Sources of data can include both live feeds and stored clips.

## S

**sample rate** The number of samples per second used for audio. Higher sample rates yield higher quality audio than lower sample rates.

**SDP (Session Description Protocol)** A text file used with QuickTime Streaming Server that provides information about the format, timing, and authorship of a live *streaming* broadcast and gives the user's computer instructions for tuning in.

**SMTP (Simple Mail Transport Protocol)** A *protocol* for sending email.

**sprite** An animated image that is managed by *QuickTime*. A sprite is defined once and is then animated by commands that change its position or appearance.

**SSL (Secure Sockets Layer)** An Internet *protocol* that allows you to send encrypted, authenticated information across the Internet.

**static IP address** An *IP* address that is assigned to a computer or device once and is never changed.

**streaming** Delivery of video or audio data over a network in real-time, as a stream of *packets* instead of a single file download.

## T

**TCP (Transmission Control Protocol)** A method used along with the Internet Protocol (IP) to send data in the form of message units between computers over the Internet. *IP* takes care of handling the actual delivery of the data, and TCP takes care of keeping track of the individual units of data (called *packets*) into which a message is divided for efficient routing through the Internet.

**temporal compression** Image compression that is performed between *frames* in a sequence. This compression technique takes advantage of redundancy between adjacent frames in a sequence to reduce the amount of data that is required to accurately represent each frame in the sequence. Sequences that have been temporally compressed typically contain *key frames* at regular intervals.

**track** A *QuickTime* data structure that represents a single data stream in a *QuickTime movie*. A movie may contain one or more *tracks*. Each track is independent of other tracks in the movie and represents its own data stream.

**TTL (time-to-live)** A *multicast* broadcast has a TTL value that is set by the user. It specifies the number of routers the stream will pass through before it stops propagating over the network.

**tween track** A *track* that modifies the display of other tracks.

## U

**UDP (User Datagram Protocol)** A data transport *protocol* that does not support retransmission of lost *packets*, sometimes used instead of *TCP/IP*.

**unicast** The one-to-one form of *streaming*. If *RTSP* is provided, the user can move freely from point to point in an on-demand *movie*.

**URL (Universal Resource Locator)** A uniform way of specifying locations on the Internet or a local file system.

## V, W, X, Y, Z

**VBR (variable bit rate)** A method of compressing data that takes advantage of changes in the media's *data rate*.

**WAV** A Windows format for sound files.

**webcast** A broadcast of live video or audio on the Internet.

**XLR plug** A three-pin audio connector that can be used with three-wire balanced cables, which cause electro-magnetic interference to be canceled out.

**XML** An extensible markup language, similar to *HTML* but more formal and more flexible.



# Index

## A

- access control 40–43
- access errors 26
- access files 40–41
- access history log 26
- “Access Log” setting 26
- address translation 45
- administering streaming servers. *See* Streaming Server Admin application
- administrators 18, 25, 40
- AirPort base station 57
- Announce (Automatic Unicast) 24, 43–44, 64–65
- any-user tag 41
- Apache web server 15
- AppleCare support 13, 14
- Apple skip-protection technology 13, 27
- archiving live presentations 66–67
- audio
  - live 8–9
  - MP3 audio streaming 12
  - preparing 28
  - streaming 8–9
- audio metafiles 33
- authentication
  - access to streamed media 40–43, 62
  - basic 25, 42
  - default 25
  - digest 25, 40
  - disabling 40
  - features 13
  - overriding global setting 41

- AuthScheme keyword 41
- Automatic Unicast (Announce) 24, 43–44, 64–65
- .avi format 28–29

## B

- bandwidth
  - considerations 33
  - live streaming and 9, 58
  - networks and 58
  - relays and 11
- bandwidth segments 58
- “Base Port” setting 38
- basic authentication 25, 42
- broadband connections 16, 27
- Broadcaster. *See* QuickTime Broadcaster
- Broadcaster Settings pane 23
- broadcaster user account 25, 43, 62
- broadcasting software 8
- broadcasts
  - See also* QuickTime Broadcaster
  - connecting over HTTP 47
  - to different streaming server 24
  - generic webcasting setup 55–67
  - live 17–18
  - names 37
  - over TCP 24
  - passwords 37
  - playlists 27–28, 34, 35
  - play modes 34
  - prerecorded media 27–28, 34
  - relayed 11, 35, 46
  - remote 23–24
  - starting 24

- stopping 24
- unable to connect to 47
- viewing 24

browsers. *See* web browsers

## C

- cable modems 33
- cameras
  - DV. *See* DV camera
  - tripod 62, 63
  - video 11
- CCDs (charge-coupled devices) 62
- certificate file 24, 43
- “Change Admin Username/Password” setting 25
- “Change Movie Broadcast Password” setting 25
- “Change MP3 Broadcast Password” setting 25
- charge-coupled devices (CCDs) 62
- clean install 15
- client computers
  - access to streaming servers 57
  - media sent to 9
  - multicast vs. unicast transport 10
  - requirements for 16
  - viewing live streams 65
  - viewing streamed media 31
- codecs 29
- command execution, with `sudo` 44–45
- computers
  - client. *See* client computers
  - IP address of 37
  - multihomed 49–50
  - source 37
  - subnets 16
- Concurrent Version System (CVS) archive 13
- configuring streaming servers 21–22
- Connected Users pane 22
- connections
  - broadband 16, 27
  - broadcast 47
  - cable modem 33
  - data rates 33
  - dropped 48
  - DSL 33
  - Ethernet 58, 60
  - HTTP 12, 45, 47

- maximum number of 25, 46, 47, 48
- wireless 57

CVS (Concurrent Version System) archive 13

## D

- Darwin Streaming Server (DSS)
  - See also* streaming servers
  - administering. *See* Streaming Server Admin application
  - binaries 17
  - binding to IP address 50
  - described 12
  - features 12–13
  - MP3 files and 28
  - non-Mac OS X upgrade 16
  - obtaining 15
  - problems with 46
  - QuickTime Broadcaster and 9
  - requirements for 17
  - running on non-Mac OS X platforms 16
  - setting up 15–19
  - source code 13, 17
  - support 13
  - version 4 12–13
  - version 4.1 13
  - web site 15, 22
- DarwinStreamingServer file 46
- data rates 33
- “Default Authentication Scheme” setting 25
- “Default Relay” setting 37, 46
- deleting items
  - groups 42
  - playlists 36
  - SDP files 31
  - users from user/group file 42
- delivery, live 8
- delivery, on-demand 8
- digest authentication 25, 40
- Digital Subscriber Line (DSL) 33
- disk space 17, 59, 67
- DNS hostname 37
- DSL (Digital Subscriber Line) 33
- DSS. *See* Darwin Streaming Server
- DV camera
  - live webcasts 62–64

QuickTime Broadcaster and 64  
streaming presentations 56

## E

eMac 17  
EMBED tag 32  
Error.log file 26  
error code 401 42  
error code 404 47  
error code 415 48  
error code 453 48  
error code 454 48  
error code -5420 48  
error log 26  
“Error Log” setting 26  
errors  
    *See also* troubleshooting  
    access 26  
    listed 47–48  
    server busy 25  
    while streaming media 47–48  
Ethernet cards 60  
Ethernet connections 58, 60  
events, live 8  
exporting items  
    files as movies 29  
    QuickTime movies 28  
    QuickTime movies as hinted movies 29–30

## F

file formats  
    streaming 28–29  
files  
    access 40–41  
    exporting as movies 29  
    hinting 28–29  
    MP3 19, 27, 28, 48  
    MPEG-1 47  
    MPEG-4 12, 16  
    SDP. *See* SDP files  
firewalls 43, 45, 60–61  
Firewire output 63  
Firewire ports 56  
Firewire technology 17

## G

general settings 24–25  
“Genre” setting 35  
group file 41, 42–43  
groups 41, 42

## H

hard disk space 17, 59–60, 67  
hardware requirements 16–18, 59–60  
headphone jack 63  
headphones 63  
help, online 22  
hinted files 28–29, 48  
hinted movies  
    exporting QuickTime movies as 29–30  
    performance 30  
hinted MPEG-1 files 47  
hinting  
    MP3 files and 27  
    purpose of 28  
    uses for 29  
hint tracks 29–30  
hostname 22  
HREF attribute 32  
HTTP connections 12, 45, 47  
HTTP downloads 48  
HTTP traffic 61  
HTTP URL 31  
HUP signal 52

## I

IETF (Internet Engineering Task Force) 14  
iMac 17  
iMovie 66–67  
    compressing/encoding DV footage 67  
    live presentations 57  
instant-on streaming 13, 16, 27  
Internet, multimedia sent over 9  
Internet Engineering Task Force (IETF) 14  
Internet Explorer 21  
IP addresses  
    binding QTSS/DSS to 50  
    source computer 37  
    Streaming Server Admin 22, 49–50

- IP Firewall service 60
- IP packets 60
- IP subnets 16
- iTunes 16

## K

- killing QTSS processes 51
- killing Streaming Server Admin processes 51–52
- Knowledge Base articles 13

## L

- lighting issues 58, 64
- lighting kit 62, 64
- Linux systems 17
- live audio
  - requirements for 17–18
  - setup for streaming 8–9
- live broadcasting 17–18
- live chats 11
- live delivery 8
- live events 8
- live media
  - streaming 31
  - unable to see 48
- live streaming
  - audio 8–9
  - choosing environment for 57–58
  - concurrent viewers 58
  - example of 55–67
  - network setup 58
  - video 8–9
- live video
  - archiving 66–67
  - requirements for 17–18
  - setup for streaming 8–9
  - shooting 66
- live webcasts 55–67
- logging, enabling 35, 48
- logs
  - access history 26
  - error 26
  - location of 26–27
  - MP3 access 26
  - playlists 26–27, 35, 48

- QuickTime movie 26
  - resetting 26
  - streaming admin server requests 26
  - streaming MP3 requests 26
- looping playlists 47

## M

- M3U metafiles 33
- Macintosh Server G3 17
- Macintosh Server G4 17
- Mac OS X
  - DSS binaries/source code 17
  - logs 26
- Mac OS X Server
  - AppleCare support page 13
  - killing QTSS processes 51
  - killing Streaming Server Admin processes 51–52
  - QTSS requirements 17
  - resources 13
  - restarting QTSS processes 51
  - restarting Streaming Server Admin processes 51–52
  - upgrading 15
- “Max. Number of Connections” setting 25
- “Max. Throughput” setting 25
- Mbone (multicast backbone) 10
- media 27–33
  - bandwidth considerations 33
  - hinted movies 29–30
  - instant-on streaming 27
  - links to MP3 playlists 33
  - live 31, 48
  - multiple sources 28
  - preparing audio 28
  - prerecorded 27–28, 34
  - protected 42
  - SDP files 30
  - sent over Internet 9
  - streamed. *See* streamed media
  - streaming file formats 28–29
  - viewing from client computer 31
- media directories
  - disabling authentication for 40
  - multiple 52–53



- symbolic links within 52–53
- “Media Directory” setting 24
- media files
  - accessing 26
  - authorized users of 41
  - hint tracks 30
  - location of 24
  - media types in 27
  - mixing 28
  - not streaming properly 46–47
  - URL for 32
  - user access to 41, 42
- memory 17, 59
- microphone 62, 63
- Microsoft Internet Explorer 21
- mount point 34, 37, 38
- “Mount Point” setting 34, 37
- movie files 48
- movie playlists 27, 34
  - See also* playlists
- movies
  - exporting files as 29
  - hinting 29
  - QuickTime. *See* QuickTime movies
  - reference 32
- Mozilla browser 21
- mp3\_access.log file 26
- MP3 access log 26
- MP3 broadcasts 18, 25
- .mp3 extension 19
- MP3 files 19, 27, 28, 48
- MP3 players 35
- MP3 playlists
  - See also* playlists
  - broadcasting media in 34
  - categories 35
  - creating 35–36
  - deleting 36
  - editing 36
  - links to 33
  - listening to 16
  - prerecorded media for 27
  - .sdp extension and 34
- MP3 streaming 12, 48
- MPEG-1 files 47

- MPEG-4 files 12, 16
- MPEG-4 player 16
- MPEG-4 playlists 35–36
- MPEG-4 streaming 12
- multicast 10
- “Multicast TTL” setting 38
- multimedia 7, 9

## N

- “Name” setting 34
- NATs (Network Address Translators) 43
- Net::SSLLeay 43
- Netscape Communicator 21
- Netscape Navigator 21
- Network Address Translators (NATs) 43
- network cards 60
- networks
  - address translation 45
  - bandwidth and 58
  - capacity of 58
  - local area 38
  - preparing for live streaming 58

## O

- on-demand delivery 8
- online help 22
- OpenSSL library 43

## P

- passwords
  - broadcaster user account 25, 62
  - broadcasts 37
  - changing for users 42–43
  - MP3 broadcasts 18, 25
  - Streaming Server Admin 18, 22, 25, 39
  - user accounts 42
  - for viewing media 41
- payload encoders 30
- performance
  - enhancements to 13
  - hinted movies 30
  - slow streaming 47
- players
  - MP3 35

- MPEG-4 16
- QuickTime. *See* QuickTime Player
- PlaylistBroadcaster process 48
- playlistname.err file 26–27
- playlists 34–37
  - access to 40
  - broadcasting prerecorded media with 34
  - creating 35–36
  - deleting 36
  - described 34
  - editing 36
  - links to 33
  - looping 47
  - movie 27
  - MP3. *See* MP3 playlists
  - MPEG-4 35–36
  - names 34
  - preparing prerecorded media for 27–28
  - problems with 48–49
  - relaying broadcasts 35
  - removing items from 35
  - server-side 13
  - settings 34–35
  - starting 35, 46
  - stopping 35
- playlists log 26–27, 35, 48
- “Play Mode” setting 34
- PLS metafiles 33
- plug-ins, QuickTime 9, 47
- port 80, streaming over 18, 25, 45, 61
- ports
  - base 38
  - Firewire 56
  - UDP 38
  - used by QTSS/DSS 61
- Power Mac G3 17
- Power Mac G4 17
- preferences 52
- prerecorded media 27–28
- presentations, streaming 55–67
- presets directory 23
- problems. *See* troubleshooting
- proxies 43
- qtaccess file 40–41, 43–44
- qtgroups file 39, 42
- QTSS. *See* QuickTime Streaming Server
- qtusers file 41
- QuickTime Broadcaster
  - See also* broadcasts
  - controlling remotely 23–24
  - described 12
  - live audio/video setup 9
  - live presentations 57
  - non-headless mode 24
  - obtaining 16, 64
  - presets 23, 24
  - QTSS/DSS and 9
  - remote control of 16
  - requirements for 17–18
  - setting up 16, 64–65
  - streaming presentations 56
  - video capture 17
  - web site 16, 64
- QuickTime client software 16
- “QuickTime for the Web” 14
- QuickTime Instructional web site 14
- QuickTime movie log 26
- QuickTime movies
  - See also* movies
  - exporting 28
  - exporting as hinted movies 29–30
  - sample 19
  - self-contained 28
- QuickTime payload encoder 30
- QuickTime Player
  - described 12
  - exporting QuickTime movies as hinted movies 30
  - viewing media from clients 31
  - viewing movies 19
  - viewing streamed media on 9
- QuickTime plug-in 9, 47
- QuickTime Pro
  - described 12
  - included with “QuickTime for the Web” 14
- QuickTime product suite 11
- QuickTime Services web site 14

- QuickTime streaming 7–14
  - See also* streaming
- QuickTime Streaming course 14
- QuickTime Streaming Server (QTSS)
  - See also* streaming servers
  - administering. *See* Streaming Server Admin application
  - binding to IP address 50
  - described 12
  - features 12–13
  - killing processes 51
  - MP3 files and 28
  - multiple media directories 52–53
  - obtaining 15
  - problems with 46
  - QuickTime Broadcaster and 9
  - requirements for 17, 59–60
  - re-reading preferences 52
  - restarting processes 51
  - setting up 15–19, 59–62
  - support 13, 14
  - version 4 12–13
  - version 4.1 13
- QuickTimeStreamingServer file 46
- QuickTime Streaming Server product page 13
- QuickTime web site 22

## R

- RAID storage systems 60
- RAM 17, 59
- real-time streaming 7, 8
- Real-Time Streaming Protocol. *See* RTSP
- Real-Time Transport Protocol. *See* RTP
- RedHat Linux 17
- reference movie 32
- relayed broadcasts 11, 35, 46
- “Relay Name” setting 37
- relays 37–39
  - default 37, 46
  - names 37
  - settings 37–38
  - setting up 38
  - streamed media 11
  - support for 13
  - turning off 39

- turning on 39
- uses for 11
- via TCP 38
- via UDP 38
- Relay Settings pane 37–39
- “Relay via TCP” setting 38
- “Relay via UDP” setting 38
- remote administration 18
- remote broadcasts 23–24
- remote control 16
- remote servers 16
- “Repetition” setting 35
- “Request incoming stream” setting 37
- resolution 63
- resources 13–14
- root user 44–45
- routers 43
- RTP (Real-Time Transport Protocol) 7, 14
- RTP payload encoder 30
- RTP standard 14
- RTP streams 33
- RTSP (Real-Time Streaming Protocol) 7, 14, 52
- RTSP standard 14
- RTSP URLs 31, 32, 53

## S

- .sdp extension 34
- SDP files
  - copying 31
  - creation of 24, 30, 31, 43
  - deleting 31
  - described 30
  - location of 48
  - modifying 31
  - playlists and 48
  - pointers to 38
  - purpose of 62
- “Secure Administration” setting 24
- Secure Sockets Layer. *See* SSL
- security 39–45
  - access control 40–43
  - Automatic Unicast (Announce)
    - method 43–44
  - certificate file 24, 43
  - command execution with sudo 44–45

- firewalls 43, 45
- Net::SSLLeay 43
- networks with address translation 45
- OpenSSL library 43
- passwords. *See* passwords
- proxies 43
- resetting Admin user name/password 39
- Secure Sockets Layer 43
- streaming on port 80 45
- user accounts 42–43
- “Sequential Looped” mode 34, 49
- “Sequential” mode 34
- server administrators 18, 25, 40
- servers
  - Apache 15
  - busy 25, 48
  - connection dropped 48
  - maximum throughput of 25
  - not running 48
  - remote 16
  - streaming. *See* streaming servers
  - subnets 16
  - Xserve 16, 17, 56
- server-side playlists 13
- Session Description Protocol files. *See* SDP files
- skip-protection technology 13, 27
- software requirements 16–18, 59
- Solaris systems 17
- “Source Hostname or IP Address” setting 37
- SRC attribute 32
- SSL (Secure Sockets Layer) 24, 43
- SSL certificate 18
- “Status: \_ Enabled” setting 37
- streamed media
  - controlling access to 40–43
  - embedding in web pages 32–33
  - errors during 47–48
  - live 31
  - relaying 11
  - viewing from client computer 31
- streaming
  - See also* QuickTime streaming
  - codecs 29
  - instant-on 13, 16, 27
  - live. *See* live streaming
  - MP3 12, 48
  - MPEG-4 12
  - over port 80 18, 25, 45, 61
  - overview 7–9
  - poor performance 47
  - process for 9–11
  - quality of 13
  - real-time 7, 8
  - streamingadminserver.log file 26
  - streamingadminserver.pl script 46
  - streamingadminserver process 51–52
  - streaming admin server requests log 26
  - streaming file formats 28–29
  - streaming files 59
  - streaming media files 28
  - streaming movies 28
  - streaming MP3 playlists 16
  - streaming MP3 requests log 26
  - “Streaming on Port 80” setting 25
  - streaming presentations 55–67
  - Streaming Proxy settings 46
  - StreamingServer.log file 26
  - Streaming Server Admin application 21–27
    - binding to single IP address 49–50
    - changing server settings 23
    - configuring server 21–22
    - connected users 22–23
    - controlling QuickTime Broadcaster
      - remotely 23–24
    - described 21
    - general settings 24–25
    - killing processes 51–52
    - log settings 25–27
    - new features 12, 13
    - password 18, 22, 25, 39
    - port settings 25
    - problems with 46
    - relay settings 37–39
    - re-reading QTSS preferences 52
    - resetting user name/password 39
    - restarting processes 51–52
    - starting streaming service 22
    - stopping streaming service 22
    - streaming server setup 18–19
    - user name 18, 22, 25, 39

- viewing server activity 22
- working with 21–22
- streaming servers
  - See also* Darwin Streaming Server; QuickTime Streaming Server; servers
  - administering. *See* Streaming Server Admin application
  - advanced topics 49–53
  - changing settings for 23
  - connected users 22–23
  - considerations 59–62
  - creating user accounts on 43–44
  - general settings 24–25
  - log settings 25–27
  - mailing lists 14
  - overview 7–8
  - port settings 25
  - problems with 46
  - remote administration 18
  - requirements for 17, 59–60
  - restricting access to 62
  - setting up 15–19, 59–62
  - testing setup 19
  - viewing activity 22
- streaming service
  - changing settings for 23
  - starting 22
  - stopping 22
- streaming service providers 14
- Streaming Transport settings 46
- sudo 44–45

## T

- T1 lines 58
- TCP
  - broadcasts over 24
  - relay via 38
  - .text format 28–29
- time-to-live (TTL) 38
- tracks, hint 29–30
- tripod 62, 63
- troubleshooting 45–49
  - See also* errors
  - live streamed media 48
  - media files 46–47

- playlists 48–49
- Streaming Server Admin 46
- streaming servers 46
- TTL (time-to-live) 38

## U

- UDP packets 45
- UDP ports 38
- UDP streams 37
- unicast 10
- URLs
  - HTTP 31
  - media files 32
  - RTSP 31, 32, 53
  - specified in SRC attribute 32
  - Streaming Server Admin computer 22
  - unable to locate 47
- user accounts
  - adding 42
  - broadcaster 25, 43, 62
  - creating 43–44
  - passwords 42
- User Datagram Protocol. *See* UDP
- user file 41, 42–43
- “User Name/Password” setting 37
- user names
  - authorized users 41
  - Streaming Server Admin 18, 22, 25, 39
- users
  - access control 40–43
  - broadcast 25
  - changing password 42–43
  - connected 22–23
  - deleting from user/group file 42
  - messages for 41
  - multiple media directories 52–53
  - unable to connect to broadcast 47
  - unable to see live streamed media 48
  - viewing media 41
  - working with 22–23

## V

- valid-user tag 41
- video

- capture 17
- streaming 8–9
- video cameras 11
- video files 59

## W

- “Wait for announced stream(s)” setting 37
- .wav format 28–29
- web browsers
  - administering server from 21
  - Internet Explorer 21
  - Mozilla 21
  - Netscape Communicator 21
  - Netscape Navigator 21
  - QuickTime plug-in 9
  - remote management of QTSS 59
  - viewing streamed media through 32
- webcasting setup 55–67
- web pages
  - embedding streaming media in 32–33
  - MP3 playlists on 33
  - playing streamed media over 9
  - webcast access from 65
- web servers 15
- web sites
  - AppleCare support 14
  - Darwin Streaming Server 13, 15, 22
  - Internet Engineering Task Force 14
  - Mac OS X Server AppleCare support page 13
  - QuickTime 22
  - QuickTime Broadcaster 16, 64
  - QuickTime Instructional site 14
  - QuickTime Services 14
  - QuickTime Streaming Server 13
  - RTP standard 14
  - RTSP standard 14
- “Weighted Random” mode 35, 48, 49
- WinAmp 16
- Windows 2000 systems 17
- Windows-based systems 9, 17, 26
- Windows NT systems 17
- wireless connections 57

## X

- XLR plugs 63
- Xserve server 16, 17, 56